

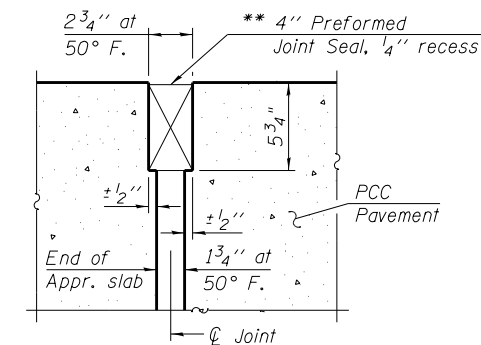
Notes:

Approach slab concrete shall be paid for as Concrete Superstructure.
 Approach footing concrete shall be paid for as Concrete Structures.
 Reinforcement shall be paid for as Reinforcement Bars, Epoxy Coated.
 For $v_{10}(E)$ bar details, see Sheet S-33.
 The approach footing maximum applied service bearing pressure (Q_{max}) = 2.0 ksf.
 For bar splicer details, see Sheet S-40.
 Cost of excavation for approach footing included with Concrete Structures.
 Quantity of Protective Coat in Bill of Material includes the quantity that shall be applied to the top and inside faces of the abutment wingwalls.

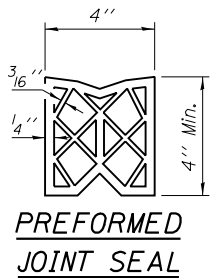
*Tilt #9 $b_{21}(E)$ and $b_{23}(E)$ bars as required to maintain clearance.

SECTION C-C

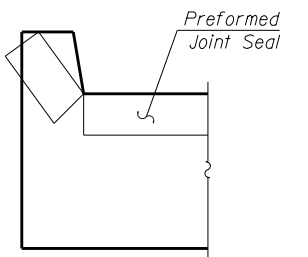
** Cost included with Concrete Superstructure.



DETAIL A

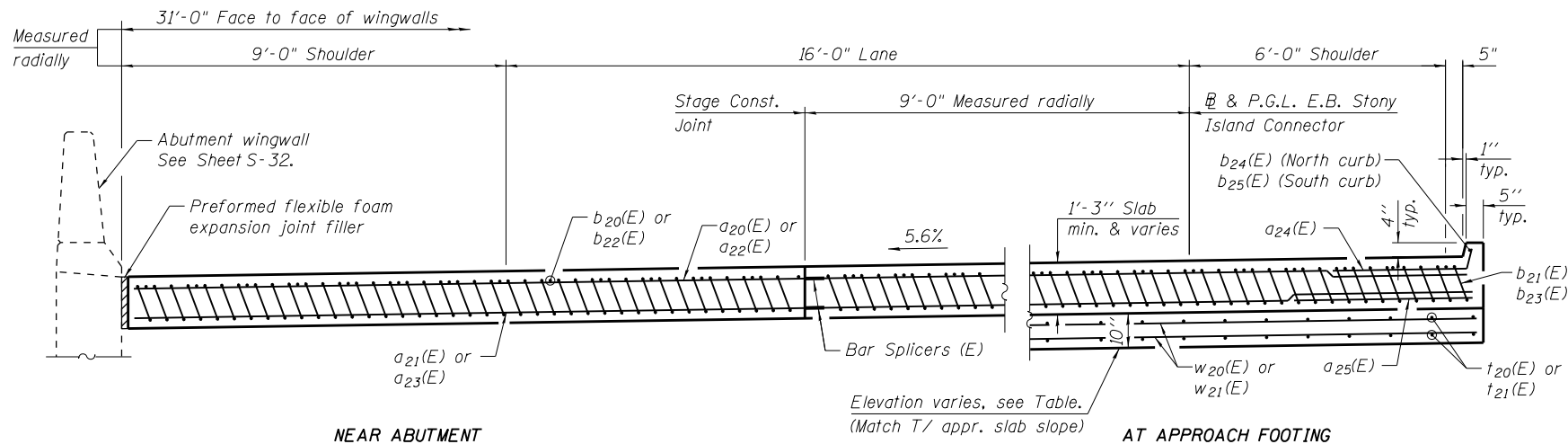


PREFORMED JOINT SEAL



VIEW F-F

Angle Preformed Joint Seal at 45° at curbs.



NEAR ABUTMENT

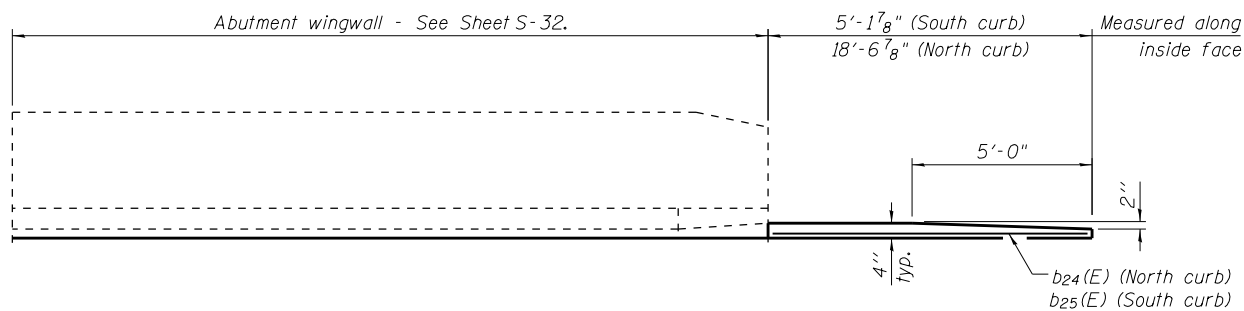
SECTION D-D

(See Plan for dimensions not shown)

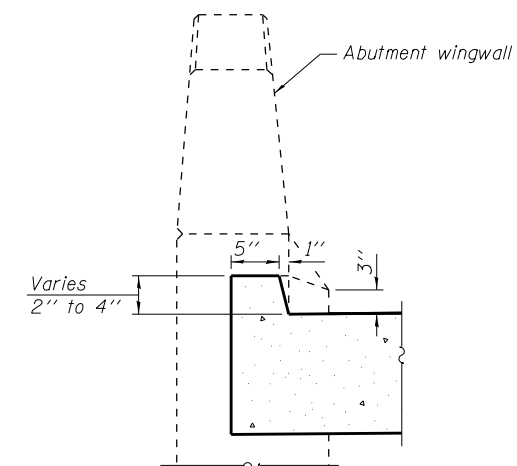
AT APPROACH FOOTING

BOTTOM OF APPROACH FOOTING ELEVATIONS

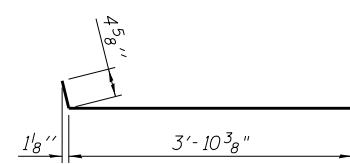
| | West End of Footing | East End of Footing |
|--------------------------|---------------------|---------------------|
| North Edge of Footing | 605.56 | 605.49 |
| Stage Construction Joint | 606.58 | 606.52 |
| South Edge of Footing | 607.51 | 607.42 |



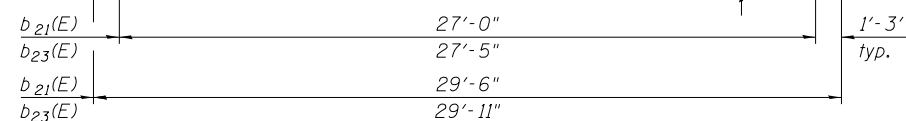
VIEW E-E



VIEW B-B



BAR a24(E)



BARS b21(E) AND b23(E)

BILL OF MATERIAL

| Bar | No. | Size | Length | Shape |
|----------------------------------|-----|---------|---------|-------|
| a20(E) | 50 | #4 | 11'-9" | — |
| a21(E) | 92 | #5 | 12'-1" | — |
| a22(E) | 50 | #4 | 12'-7" | — |
| a23(E) | 92 | #5 | 12'-11" | — |
| a24(E) | 19 | #4 | 4'-3" | — |
| a25(E) | 36 | #5 | 4'-10" | — |
| b20(E) | 26 | #4 | 16'-3" | — |
| b21(E) | 37 | #9 | 29'-6" | — |
| b22(E) | 28 | #4 | 16'-6" | — |
| b23(E) | 39 | #9 | 29'-11" | — |
| b24(E) | 1 | #4 | 4'-10" | — |
| b25(E) | 1 | #4 | 18'-2" | — |
| t20(E) | 34 | #4 | 13'-5" | — |
| t21(E) | 36 | #4 | 13'-8" | — |
| w20(E) | 80 | #5 | 12'-6" | — |
| w21(E) | 80 | #5 | 13'-4" | — |
| Bridge Deck Grooving | | Sq. Yd. | 99 | |
| Protective Coat | | Sq. Yd. | 127 | |
| Concrete Superstructure | | Cu. Yd. | 44.7 | |
| Concrete Structures | | Cu. Yd. | 14.0 | |
| Reinforcement Bars, Epoxy Coated | | Pound | 14,530 | |

12:30:38 PM

5/2/2013

S:\1072_05_CADD\Structure\1 SN 0162471\CADD Sheets\0162471-60112-015-WBS92.dgn

BOWMAN, BARRETT & ASSOCIATES INC.
 CONSULTING ENGINEERS
 Chicago, Illinois
 312.228.0100
 www.bbainc.com



| | | |
|------------------------|---------------|-------------|
| USER NAME = | DESIGNED - TL | REVISOR - |
| PLOT SCALE = | CHECKED - BAK | REVISIONS - |
| PLOT DATE = 03/29/2013 | DRAWN - TL | REVISIONS - |
| | CHECKED - BAK | REVISIONS - |

STATE OF ILLINOIS
 DEPARTMENT OF TRANSPORTATION

WEST BRIDGE APPROACH SLAB DETAILS II
 STRUCTURE NO. 016-2471

SHEET NO. S-15 OF S-63 SHEETS

| F.A.I. RT.E. | SECTION | COUNTY | TOTAL SHEETS | SHEET NO. |
|---------------------------|-------------|--------|--------------|-----------|
| 94 | 2012-059-BR | COOK | 631 | 508 |
| CONTRACT NO. 60J12 | | | | |
| ILLINOIS FED. AID PROJECT | | | | |