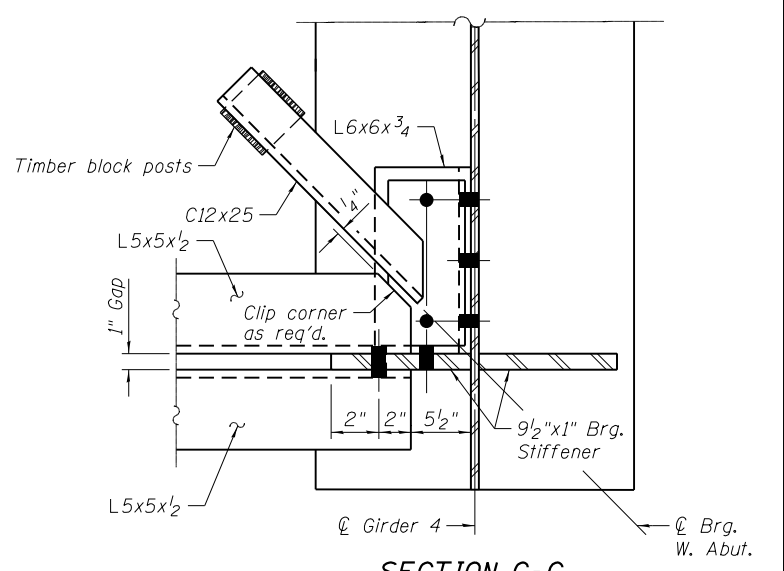
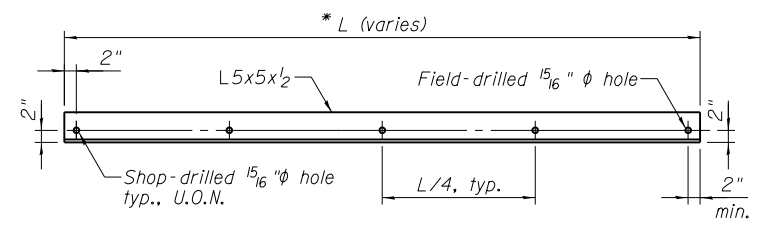


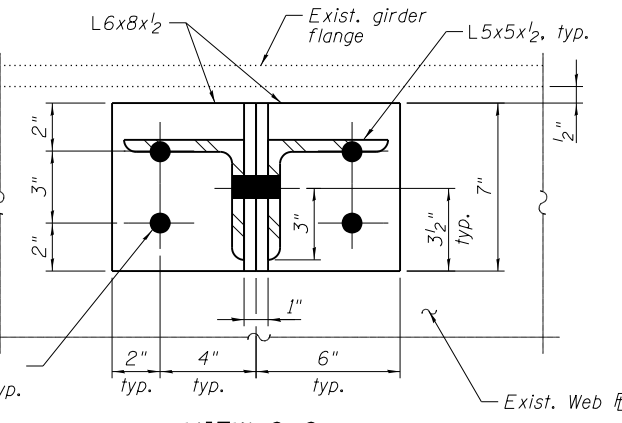
**PLAN**  
(For Girder dimensions, see Sheet S-21)



**SECTION G-G**

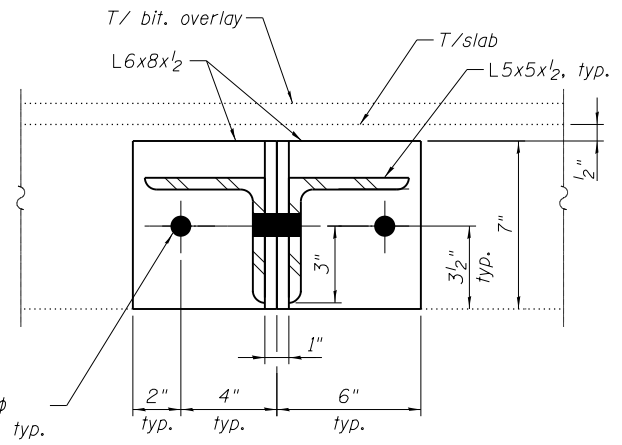


**TYPICAL BRACING ANGLE**



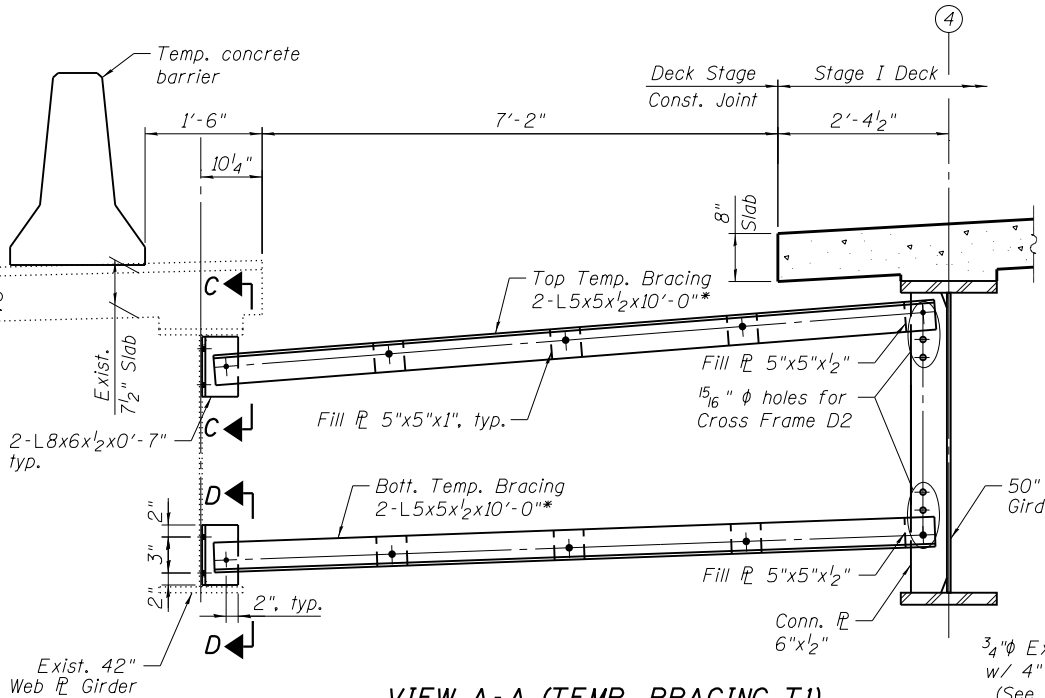
**VIEW C-C**  
(View D-D vertically mirrored)

Shop drill 1 5/16" φ hole in L6x8x1/2, typ.  
Field drill 1 5/16" φ hole in exist. web.



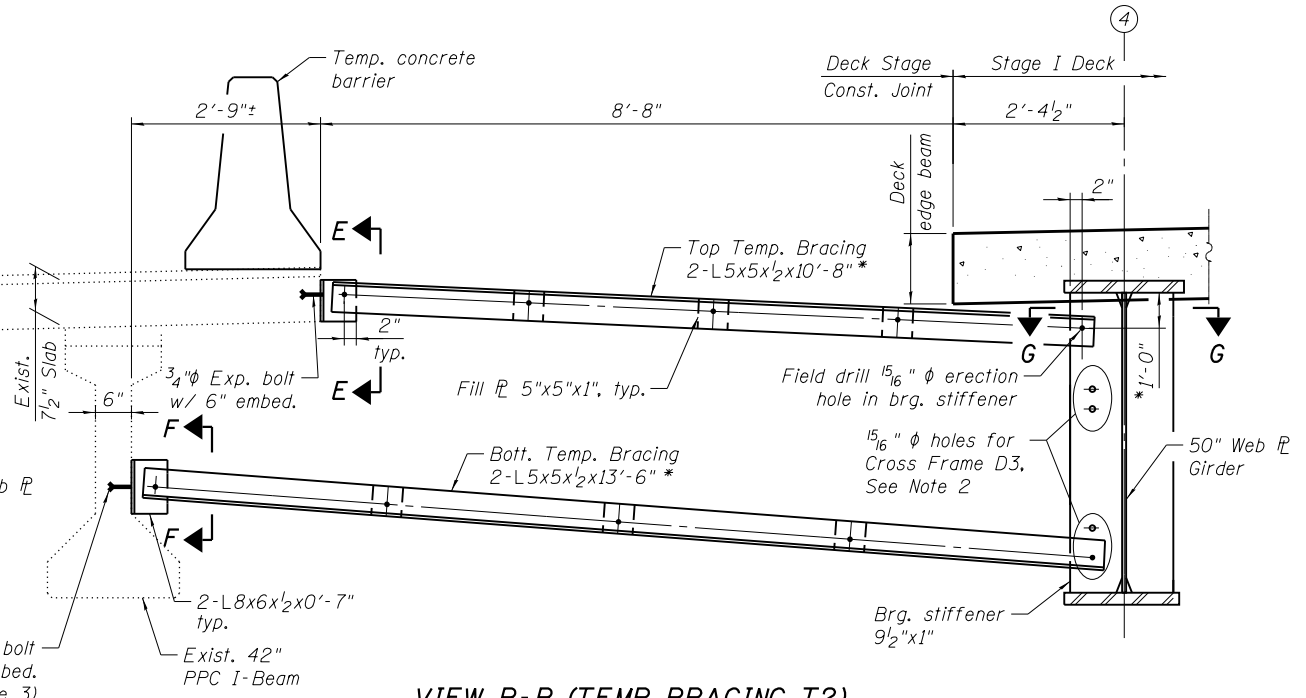
**VIEW E-E**  
(View F-F vertically mirrored)

Shop drill 1 5/16" φ hole in L6x8x1/2, typ.



**VIEW A-A (TEMP. BRACING T1)**  
(17 Required)

\* Verify in field.



**VIEW B-B (TEMP. BRACING T2)**  
(1 Required)  
(Stage I portion of cross frame D3 not shown for clarity)

Notes:

- Complete installation of all temporary bracing T1 and T2 prior to pouring Stage 1 deck.
- The L6x6x3/4 seat angle carrying the bottom chord of cross frame D3 shall not be connected to the bearing stiffener in Stage 1.
- Contractor shall locate internal prestressed strands with nondestructive methods prior to installing expansion bolts (cost included with Furnishing & Erecting Structural Steel). Care shall be taken to avoid drilling through existing prestressing strands.
- Temporary bracing T1 and T2 shall not be removed until Stage 1 construction is complete.
- Cost of furnishing, erecting, removal and disposal of temporary bracing shall be included with Furnishing & Erecting Structural Steel. Estimated weight of 14,810 pounds for temporary bracing is included in the total structural steel weight shown on Sheet S-2.
- For each stage, when cantilever forming brackets are used for deck forms, the work shall be done according to Article 503.06(b) of the Standard Specifications except as modified below.

The finishing machine rails shall be placed on the top flange of the exterior beams.

The girders supporting cantilever forming brackets, shall be tied together at 4 foot intervals.

The 4x4 in. hardwood beam blocks shall be installed between webs of beams in each bay prior to deck pours and shall not be removed until concrete reaches the required compressive strength.

4:53:00 PM

4/30/2013

S:\1072\_05\_CADD\Structure\1 SN 0162471\CADD Sheets\0162471-6012-025-5584.dgn

BOWMAN, BARRETT & ASSOCIATES INC.  
CONSULTING ENGINEERS  
Chicago, Illinois  
312.228.0100  
www.bbainc.com

USER NAME =	DESIGNED - IYL	REVISED -
PLOT SCALE =	CHECKED - BAK	REVISED -
PLOT DATE = 03/29/2013	DRAWN - MTR	REVISED -
	CHECKED - IYL	REVISED -

STATE OF ILLINOIS  
DEPARTMENT OF TRANSPORTATION

STAGE I DECK POUR TEMPORARY BRACING DETAILS  
STRUCTURE NO. 016-2471

SHEET NO. S-25 OF S-63 SHEETS

F.A.I. R.E.	SECTION	COUNTY	TOTAL SHEETS	SHEET NO.
94	2012-059-BR	COOK	631	518
CONTRACT NO. 60J12				
ILLINOIS FED. AID PROJECT				