

**SECTION A-A**  
(Horizontal Dimensions @ Rt. L's)

Overexcavation beyond the limits of Structure Excavation and Removal and Disposal of Unsuitable Material for Structures. This area not measured for payment. Backfill overexcavation with same material as used for select fill.

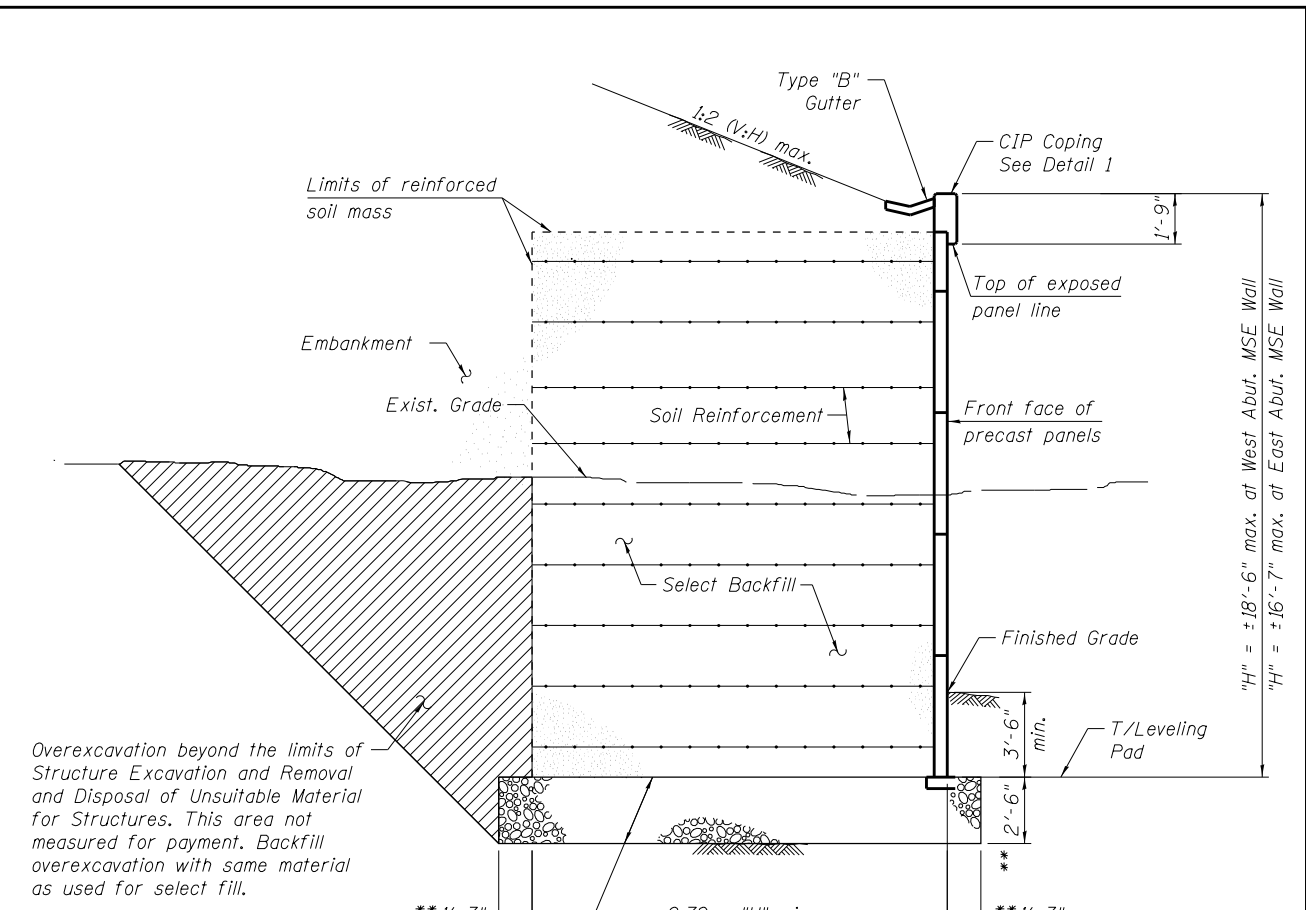
Soil reinforcement attached to the abutment shall resist the factored force as shown on Sheets S-32 and S-35.

Overexcavation beyond the limits of Structure Excavation and Removal and Disposal of Unsuitable Material for Structures. This area not measured for payment. Backfill overexcavation with same material as used for select fill.

Limits of Removal and Disposal of Unsuitable Material for Structures. Backfill with same material as used for select fill. Cost included with Mechanically Stabilized Earth Retaining Wall.

\*Piles shall be driven after limits of removal of unsuitable materials have been backfilled, but prior to placement of the reinforced select fill, and shall be coated with coal tar epoxy from the bottom of the select fill to 1" above the base of the abutment. The cost of the coal tar epoxy coating shall be included with the cost of Furnishing Metal Shell Piles 12" X 0.250".

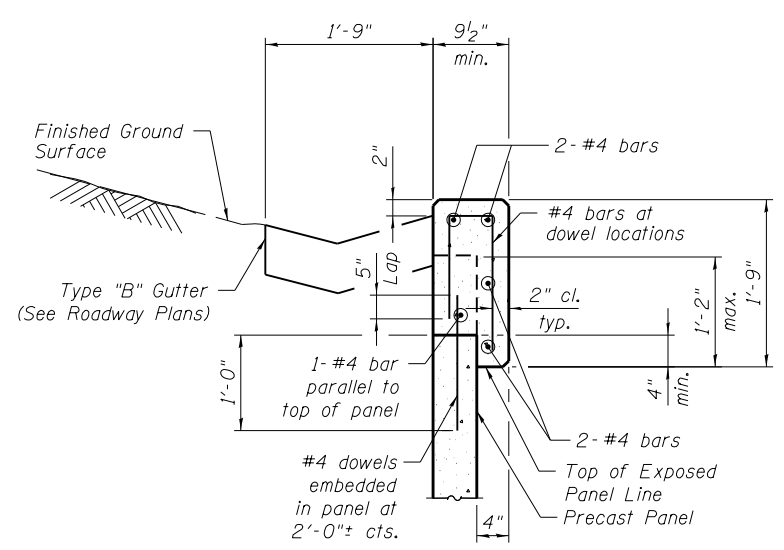
\*\*Estimated limits shown. Actual limits to be determined in field.



**SECTION B-B**

Overexcavation beyond the limits of Structure Excavation and Removal and Disposal of Unsuitable Material for Structures. This area not measured for payment. Backfill overexcavation with same material as used for select fill.

Limits of Removal and Disposal of Unsuitable Material for Structures. Backfill with same material as used for select fill. Backfill not measured for payment.



**DETAIL 1**

Notes:

The factored soil bearing resistance at the top of leveling pad elevation for the MSE wall = 6.0 ksf. The applied factored MSE wall bearing pressure must be less than the factored soil bearing resistance. See MSE wall shop drawings for equivalent uniform applied bearing pressure.

The Contractor shall design and construct the MSE wall accounting for the proposed piles and any other appurtenances within the limits of the reinforced soil mass.

15363 PM

5/1/2013

S:\1072\_05\_CADD\Structure\1 SN 0162471\CADD Sheets\0162471-6012-029-MSE05.dgn

BOWMAN, BARRETT & ASSOCIATES INC.  
CONSULTING ENGINEERS  
Chicago, Illinois  
312.228.0100  
www.bbainc.com

USER NAME =	DESIGNED - TL	REVISED -
	CHECKED - BAK	REVISED -
PLOT SCALE =	DRAWN - MTR	REVISED -
PLOT DATE = 03/29/2013	CHECKED - TL	REVISED -

STATE OF ILLINOIS  
DEPARTMENT OF TRANSPORTATION

MSE RETAINING WALL DETAILS  
STRUCTURE NO. 016-2471

SHEET NO. S-29 OF S-63 SHEETS

F.A.I. RTE.	SECTION	COUNTY	TOTAL SHEETS	SHEET NO.
94	2012-059-BR	COOK	631	522
CONTRACT NO. 60J12				

ILLINOIS FED. AID PROJECT