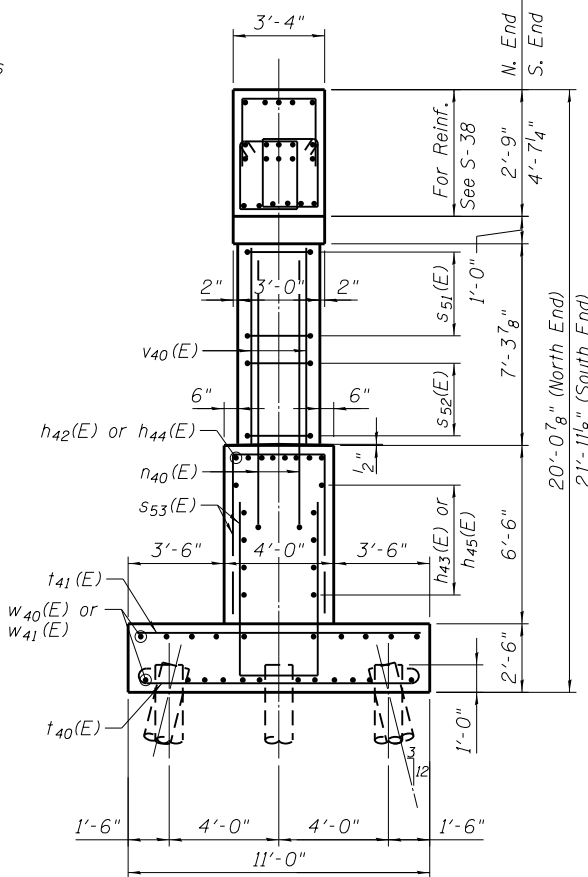
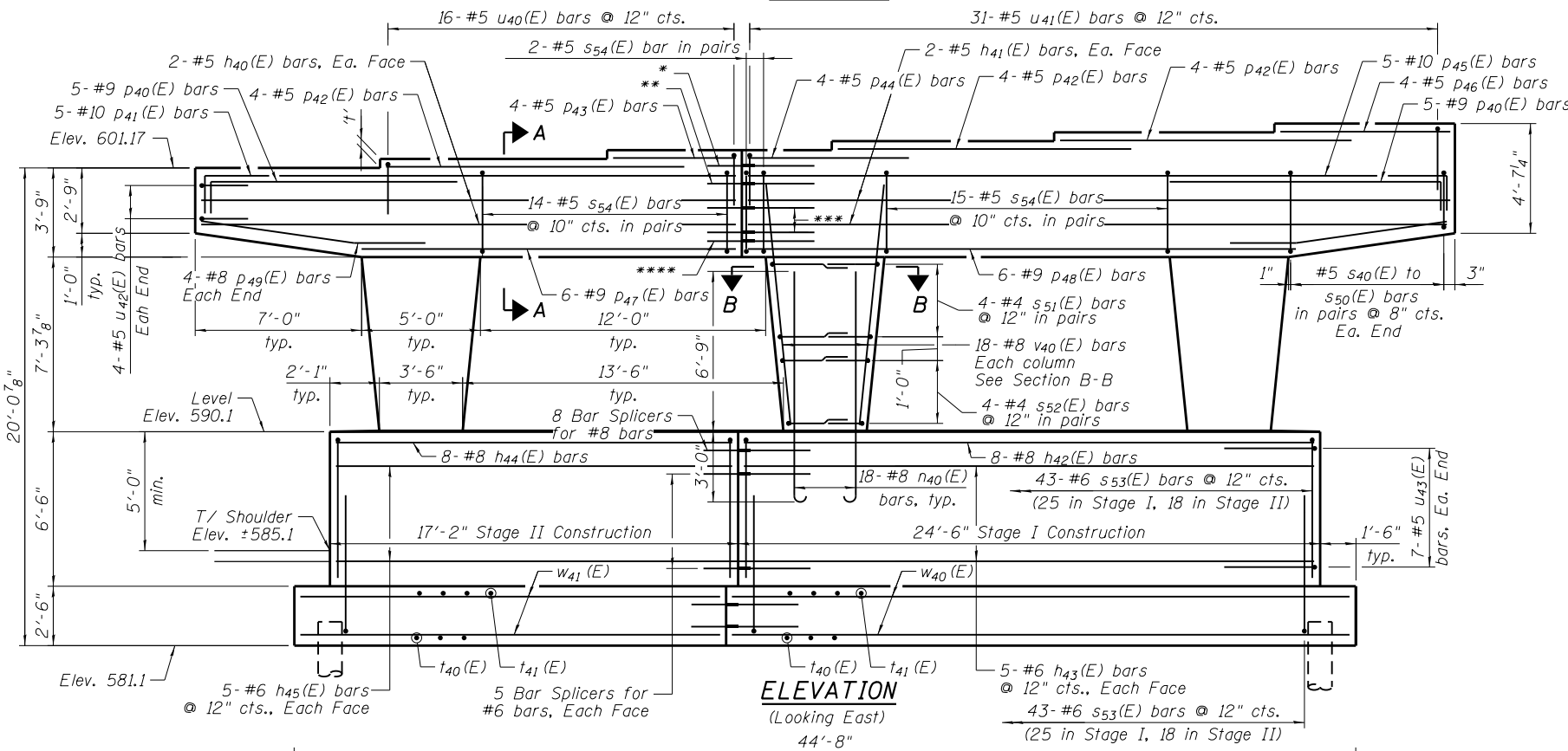


Girder Number	X	Y
1	7 ⁵ / ₈ "	10 ¹ / ₄ "
2	7 ⁵ / ₈ "	10 ³ / ₈ "
3	7 ³ / ₄ "	10 ³ / ₈ "
4	7 ⁷ / ₈ "	10"
5	7 ⁷ / ₈ "	10"
6	8"	10"



MIN. BAR LAP

- #4 - 2'-7"
- #5 - 3'-3"
- #8 - 6'-9"
- #9 - 8'-7"
- #10 - 10'-10"

BEARING SEAT ELEVATIONS

Girder	Brg. Seat Elevation	4'
1	601.17	4 ¹ / ₂ "
2	601.54	4 ¹ / ₂ "
3	601.91	4 ¹ / ₂ "
4	602.28	4 ³ / ₈ "
5	602.65	4 ³ / ₈ "
6	603.02	4 ³ / ₈ "

PILE DATA

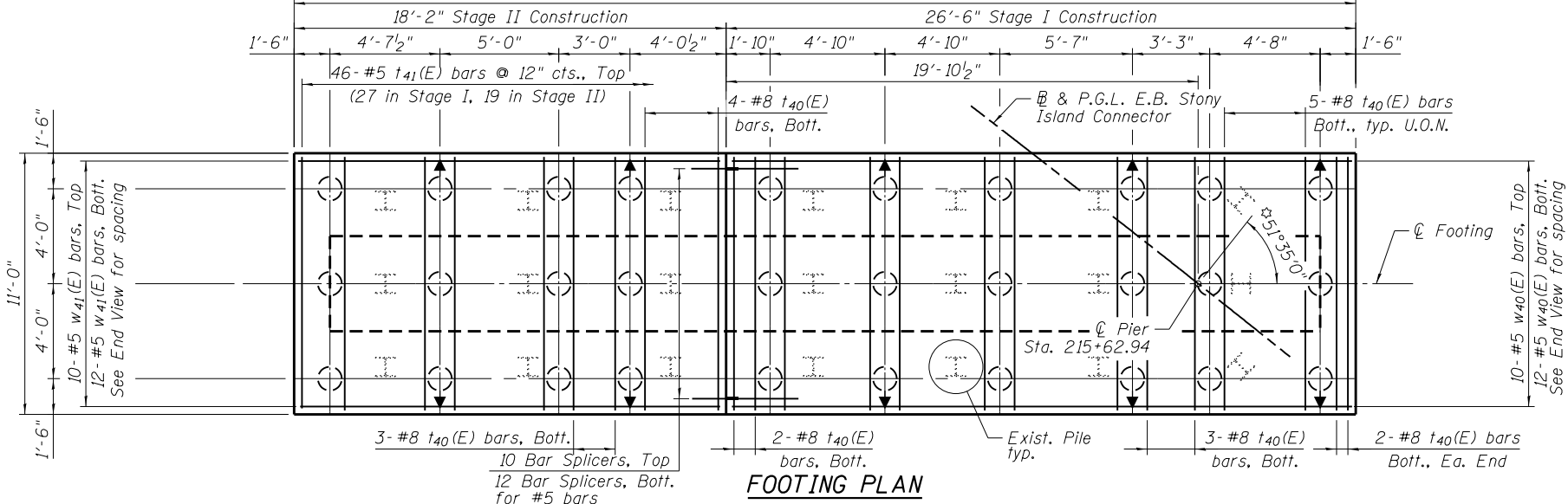
Type: Metal Shell - 12" ϕ with 0.250" walls
 Nominal Required Bearing: 302 kips
 Factored Resistance Available: 166 kips
 Est. Length: 30 ft.
 No. Production Piles: 29
 No. Test Piles: 1

Notes:

1. Space reinforcement in cap to miss anchor bolts.
2. Pour steps monolithically with cap.
3. See Sheet S-38 for Sections A-A and B-B, bar bending diagrams, and Bill of Material.
4. For details of piles, see Sheet S-39.
5. Pile locations may be adjusted up to 6" (parallel to ϕ Pier) from the locations shown herein in order to miss existing piles. All adjusted pile locations must be approved by the Engineer prior to driving.

LEGEND

- Battered Pile
- Vertical Pile
- Existing H-Pile



3/26/23 PM
 4/30/2013
 S:\1072_05_CADD\Structure\1 SN 0162471\CADD Sheets\0162471-60112-037-PI(0).dgn

USER NAME =	DESIGNED - SF	REVISD -
PLOT SCALE =	CHECKED - BAK	REVISD -
PLOT DATE = 03/29/2013	DRAWN - MTR	REVISD -
	CHECKED - TL	REVISD -

STATE OF ILLINOIS
 DEPARTMENT OF TRANSPORTATION

PIER DETAILS I
STRUCTURE NO. 016-2471
 SHEET NO. S-37 OF S-63 SHEETS

F.A.I. RTE.	SECTION	COUNTY	TOTAL SHEETS	SHEET NO.
94	2012-059-BR	COOK	631	530

CONTRACT NO. 60J12
 ILLINOIS FED. AID PROJECT