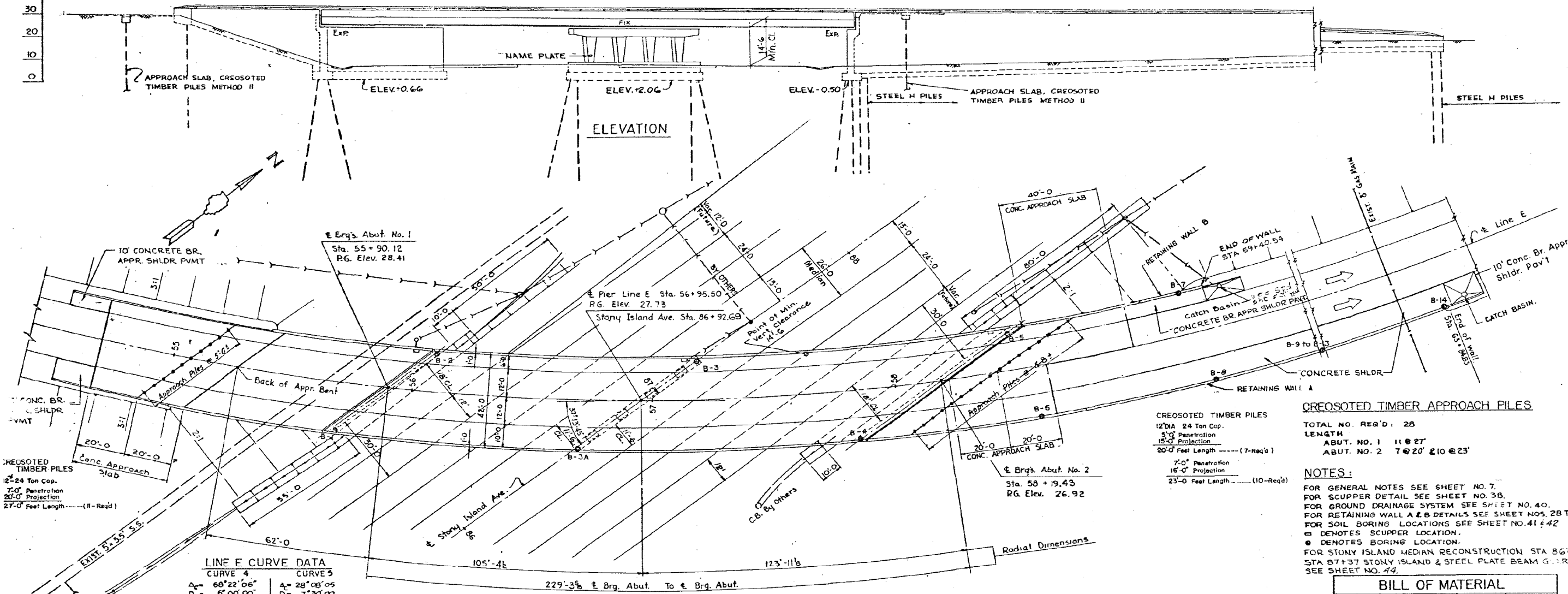
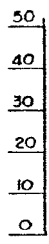


B.M. TSR-#2 EL. 17.292 (CITY DATUM)
 AT 99th ST & WOODLAWN AVE. A SQ. CUT ON
 CONC. WALK (NW COR.) 3.0' EAST OF W. LINE, 4.0'
 SOUTH OF N. LINE.

B.M. TSR-#4 C.C.H.D. EL. 6.319 (CITY DATUM)
 AT 103rd ST & STONY ISLAND AVE. A SQ. CUT ON E. CURB
 OF MEDIAN STRIP 58.9' N. OF CENTERLINE OF 103rd ST,
 18.75' W. OF C. OF N. BOUND. LANE OF STONY ISLAND AVE.

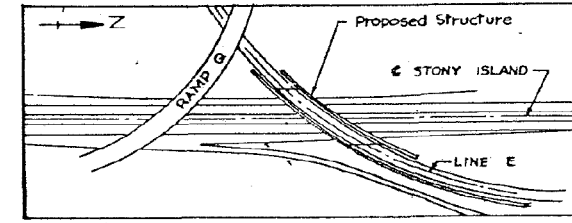


LINE E CURVE DATA

CURVE 4		CURVE 5	
D.P.	68°22'06"	A	28°08'05"
D	6°00'00"	D	7°30'00"
T _c	726.23'	T _c	191.43'
L _c	11739.47'	L _c	375.13'
R	954.93'	E _c	23.62'
S.C.	49+12.38	R	763.94'
P.T.	59+36.27	P.C.C.	60+51.85
P.C.C.	60+51.85	P.T.	62+43.28
		P.T.	64+26.98

PLAN

TRAFFIC LINE E
 1992 ADT 12490
 1992 DHV 1525
 HIGHWAY CLASSIFICATION FR-3
 TRAFFIC FACTOR: 11.7%
 DESIGN SPEED: 40 MPH



LOCATION PLAN

CREOSOTED TIMBER APPROACH PILES
 TOTAL NO. REQ'D: 28
 LENGTH:
 ABUT. NO. 1 11 @ 27'
 ABUT. NO. 2 7 @ 20' @ 10 @ 23'

NOTES:
 FOR GENERAL NOTES SEE SHEET NO. 7.
 FOR SCUPPER DETAIL SEE SHEET NO. 38.
 FOR GROUND DRAINAGE SYSTEM SEE SHEET NO. 40.
 FOR RETAINING WALL A & B DETAILS SEE SHEET NOS. 28 THRU 36.
 FOR SOIL BORING LOCATIONS SEE SHEET NO. 41 & 42.
 ● DENOTES SCUPPER LOCATION.
 ○ DENOTES BORING LOCATION.
 FOR STONY ISLAND MEDIAN RECONSTRUCTION STA 86+37 TO
 STA 87+37 STONY ISLAND & STEEL PLATE BEAM G. RD RAIL
 SEE SHEET NO. 49.

BILL OF MATERIAL

ITEM	UNIT	TOTAL
CREOSOTED TIMBER PILES	LIN. FT.	667
NAME PLATES	EA.	1

FURNISHING CREOSOTED TIMBER PILES
 12 INCH DIA 20' TO 38.0' LONG. — 667 Lin. Ft.

DEPARTMENT OF HIGHWAYS
 COOK COUNTY, ILLINOIS
 GEORGE DUNNE
 PRESIDENT BOARD OF COMMISSIONERS

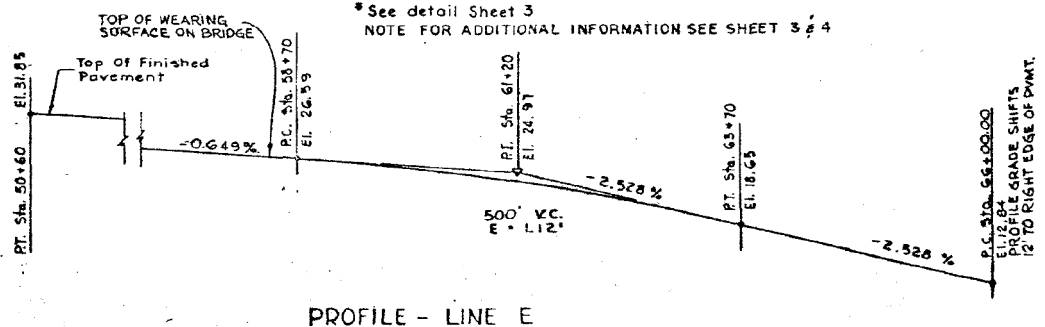
GENERAL PLAN
 STONY ISLAND CONNECTOR FAI 94
 LINE E STRUCTURE

PROJECT: E 60 246 (16)
 SCALE: 1" = 20'
 APPROVED: [Signature]
 COUNTY HWY: 174A
 SHEET: 6 OF 97
 DRAWING NO. 97

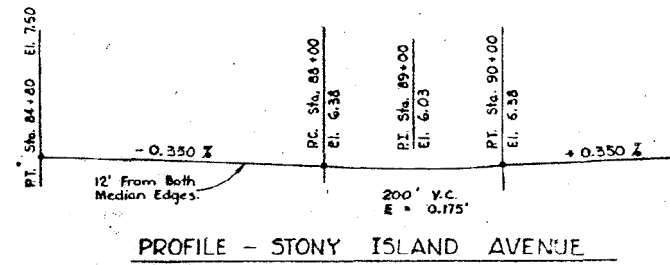
APPROVED: [Signature]
 CHIEF ENGINEER

REVISIONS

DATE	BY	DESCRIPTION



PROFILE - LINE E



PROFILE - STONY ISLAND AVENUE

BOWMAN, BARRETT & ASSOCIATES INC.
 CONSULTING ENGINEERS
 Chicago, Illinois
 312.228.0100
 www.bbainc.com

USER NAME =	DESIGNED -	REVISED -
PLOT SCALE =	CHECKED - BAK	REVISED -
PLOT DATE = 03/29/2013	DRAWN -	REVISED -
	CHECKED -	REVISED -

STATE OF ILLINOIS
 DEPARTMENT OF TRANSPORTATION

EXISTING PLANS (FOR INFORMATION ONLY)
 STRUCTURE NO. 016-2471

SHEET NO. S-45 OF S-63 SHEETS

F.A.I. RTE.	SECTION	COUNTY	TOTAL SHEETS	SHEET NO.
94	2012-059-BR	COOK	631	538

CONTRACT NO. 60J12
 ILLINOIS FED. AID PROJECT