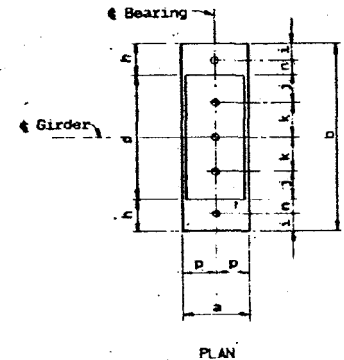
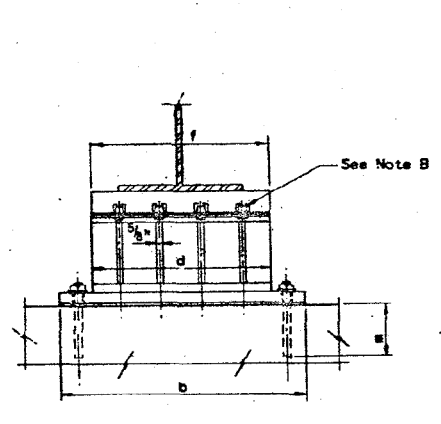
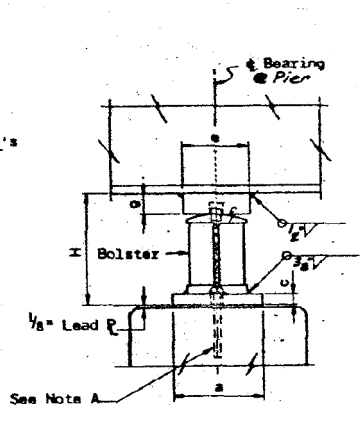
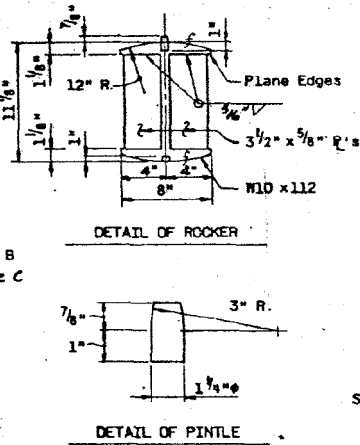
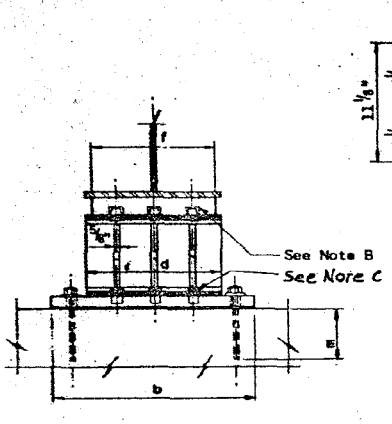
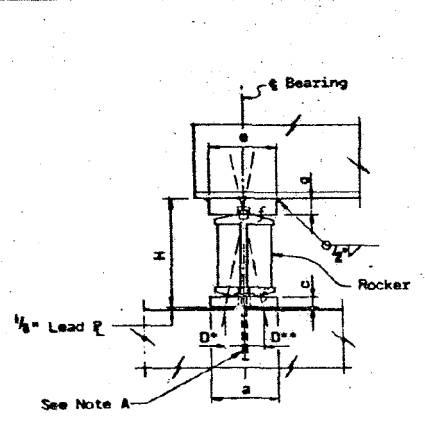


2/3/07 PM

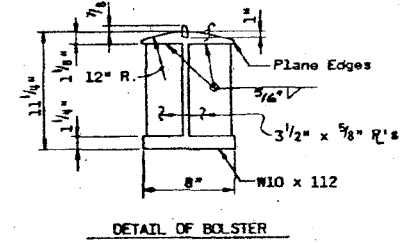
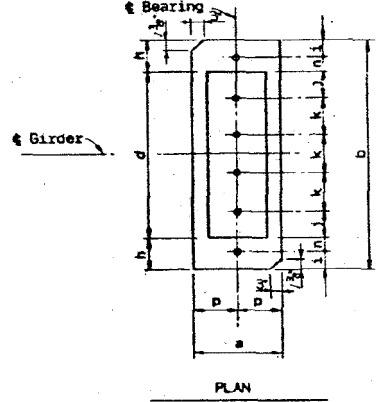
3/29/2013

S:\1072_05_CADD\Structure\1 SN 0162471\CADD Sheets\0162471-60112-052-F108.dgn



NOTE :
 D = $\frac{1}{8}"/100'$ of expansion for every 15° below the normal temp. of 50°F.
 D' = $\frac{1}{8}"/100'$ of expansion for every 15° above the normal temp. of 50°F.
 Note A 1 1/2" Anchor Bolts to be grouted into drilled holes after girders are in place. All fixed Anchor Bolts may be built into the masonry. Place 3" x 3" x 5/16" washer under nut.
 Note B 1 3/4" holes 1" deep in top flange for Pintles.
 Note C 1/4" holes 1" deep in bottom flange for pintles. Thread or press fit Pintles into bottom flange.

EXPANSION BEARING TYPE 'E'
 NOT TO SCALE



FIXED BEARING TYPE 'F'
 NOT TO SCALE

BEARING SCHEDULE															
TYPE	a	b	c	d	e	f	g	h	i	j	k	m	n	p	H
E	9"	27"	1 1/2"	18"	9"	16 1/2"	2 1/4"	4 1/2"	2 1/2"	4"	5"	15"	2"	4 1/2"	14 7/8"
F	12"	33"	1 1/2"	24"	9"	24"	2"	4 1/2"	2 1/2"	3 3/4"	5 1/2"	15"	2"	8"	14 3/8"

- NOTES :**
- All structural steel shall conform to ASTM A-36, except as noted.
 - Fasteners shall be 7/8", open holes 1" unless otherwise noted. These shall be high strength bolts conforming to ASTM A-325 (Friction Type).
 - End of Girders and all Beam Stiffeners shall be vertical under full dead loads.
 - The procedures in the fabrication of horizontally curved girders shall be approved by the Engineer-in-charge.
 - Calculated weight of structural steel this sheet 8242 lbs. (included in total weight of structural steel on sheet no. 19.) Calculated weight of Brgs. includes rockers, bolsters, brg. plates, lead plates, anchor bolts, nuts & washers.
 - Erection of bearings & anchorage in accordance to Art. 507.08 of the Standard Specifications.

NOTE :
 For locations of Bearing Types, See Sheet 19.

DEPARTMENT OF HIGHWAYS COOK COUNTY, ILLINOIS			
GEORGE W. DUNNE PRESIDENT BOARD OF COMMISSIONERS		SUPERINTENDENT OF HIGHWAYS	
STRUCTURAL STEEL BEARING DETAILS			
STONY ISLAND CONNECTOR FAI 94 LINE E STRUCTURE			
KROEGLER, BENDER, STONE & ASSOCIATES INC. CONSULTING ENGINEERS CHICAGO, ILLINOIS		PROJECT: EBU 246 (76)	
APPROVED: <i>[Signature]</i> CHIEF ENGINEER		SCALE: APPROVED: <i>[Signature]</i>	
F.A. Route No.	COUNTY HWY. Route No.	Sheet No.	Total Sheets
122	174A	21	37

REVISIONS		
DATE	BY	DESCRIPTION

BOWMAN, BARRETT & ASSOCIATES INC.
 CONSULTING ENGINEERS
 Chicago, Illinois
 312.228.0100
 www.bbainc.com

USER NAME =	DESIGNED -	REVISED -
PLOT SCALE =	CHECKED - BAK	REVISED -
PLOT DATE = 03/29/2013	DRAWN -	REVISED -
	CHECKED -	REVISED -

STATE OF ILLINOIS
 DEPARTMENT OF TRANSPORTATION

EXISTING PLANS (FOR INFORMATION ONLY)
 STRUCTURE NO. 016-2471

SHEET NO. S-52 OF S-63 SHEETS

F.A.I. RTE.	SECTION	COUNTY	TOTAL SHEETS	SHEET NO.
94	2012-059-BR	COOK	631	545
CONTRACT NO. 60J12				

ILLINOIS FED. AID PROJECT