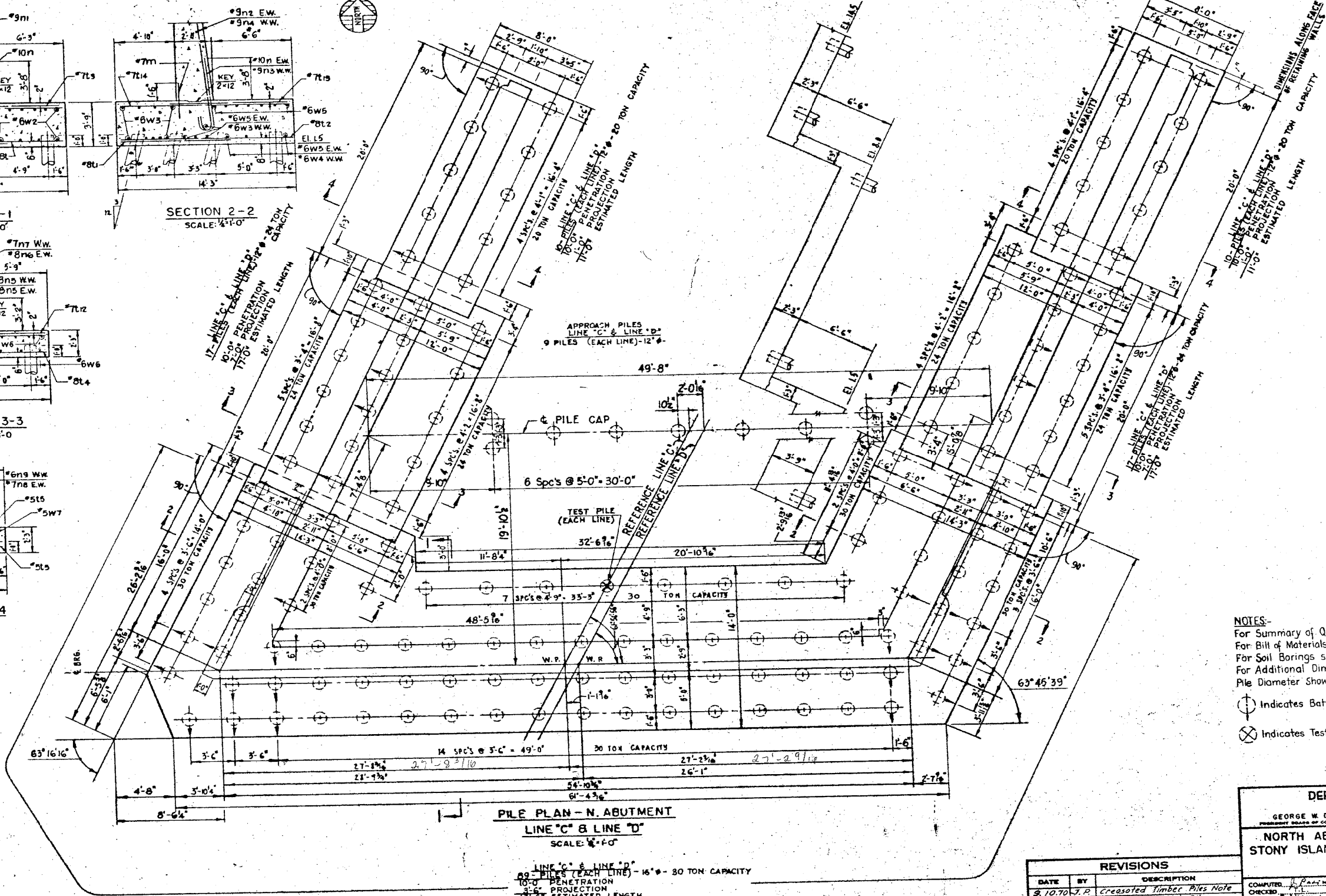
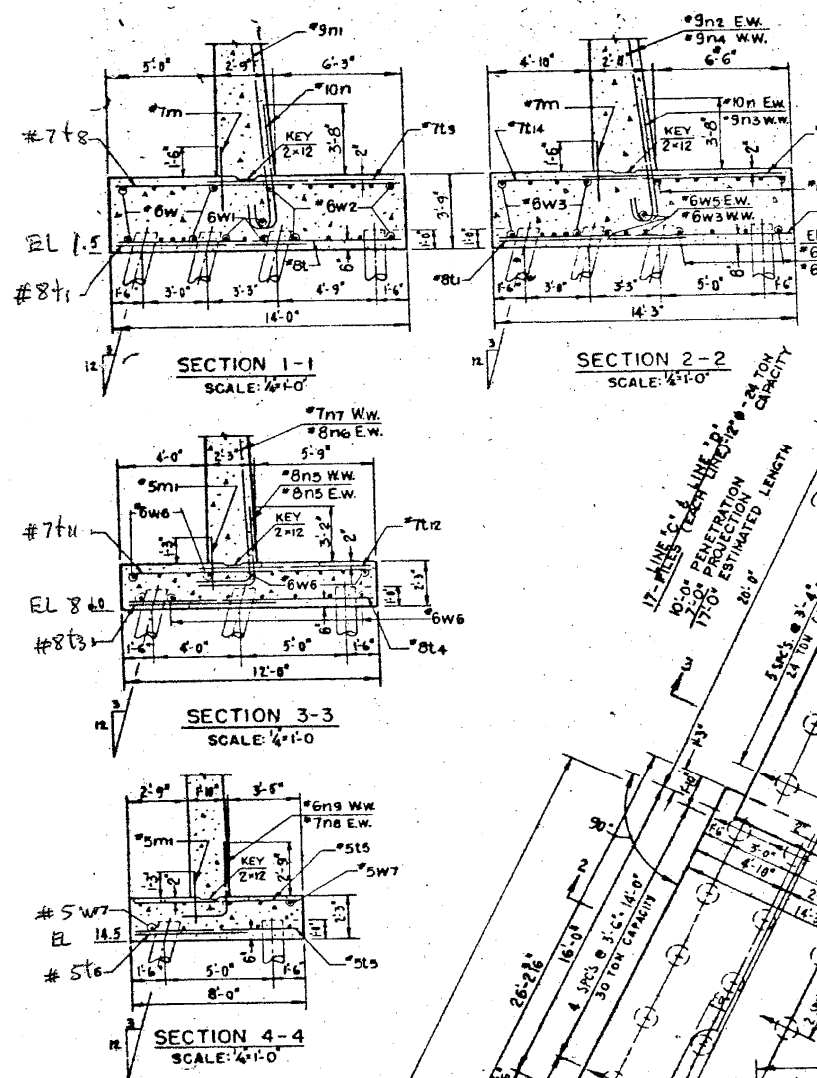


COUNTY PROGRAM		SHEET
ITEM No.	YEAR	No.



PILE PLAN - N. ABUTMENT
LINE 'C' & LINE 'D'
 SCALE: 1/4"=1'-0"

LINE 'C' & LINE 'D'
 10'-0" PENETRATION
 3'-6" PROJECTION
 13'-6" ESTIMATED LENGTH
 1 = TEST PILE (EACH LINE)

Note: - All Piles are Creosoted Timber Piles.

NOTES:-
 For Summary of Quantities see Sht No.2
 For Bill of Materials (Class "X" Concrete & Re-Bars) see Sht No.14
 For Soil Borings see Sht No.5
 For Additional Dimensions see Sht No.15
 Pile Diameter Shown Is Minimum.

- ⊙ Indicates Battered Pile.
- ⊗ Indicates Test Pile.

DEPARTMENT OF HIGHWAYS	
GEORGE W. DUNNE SUPERINTENDENT OF CONSTRUCTION	THOMAS G. COTS SUPERINTENDENT OF HIGHWAYS
NORTH ABUTMENTS-FOOTING AND PILES	
STONY ISLAND EXPRESSWAY GRADE SEPARATION	
OVER	
103RD STREET	
PROJECT: EBU-246(44)	
COMPUTER: [Signature]	SUBMITTED: [Signature]
CHECKED: [Signature]	DESIGNED: [Signature]
CHECKED: [Signature]	DESIGNED: [Signature]
SECTION NUMBER: 122	SHEET NO.: 13
SECTION NUMBER: 174-1515-2-CF	SHEET NO.: 34
SECTION NUMBER: 176-1515-2-CF	SHEET NO.: 581
CONTRACT NO. 60J12	

REVISIONS		
DATE	BY	DESCRIPTION
9.10.10	J.P.	Creosoted Timber Piles Note added. Appr. Slab Piles capacity deleted.

2:55:46 PM

3/29/2013

S:\1072_05_CADD\Structure\1-SN_0162441_2442\CADD_Sheets\0162441-2442-60J12-025-F70B.dgn

BOWMAN, BARRETT & ASSOCIATES INC.
 CONSULTING ENGINEERS
 Chicago, Illinois
 312.228.0100
 www.bbainc.com

USER NAME =	DESIGNED -	REVISED -
PLOT SCALE =	CHECKED - BAK	REVISED -
PLOT DATE = 03/29/2013	DRAWN -	REVISED -
	CHECKED -	REVISED -

STATE OF ILLINOIS
DEPARTMENT OF TRANSPORTATION

EXISTING PLANS (FOR INFORMATION ONLY)
STRUCTURE NOS. 016-2441 & 016-2442

SHEET NO. S-25 OF S-31 SHEETS

F.A.I. RTE. 94	SECTION 2012-059-BR	COUNTY COOK	TOTAL SHEETS 631	SHEET NO. 581
CONTRACT NO. 60J12				
ILLINOIS FED. AID PROJECT				