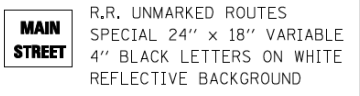
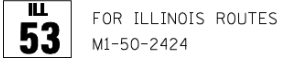
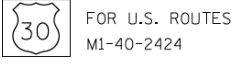
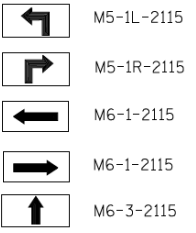


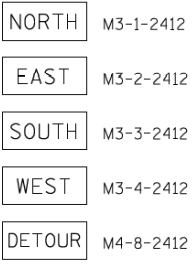
**ROUTE MARKERS**



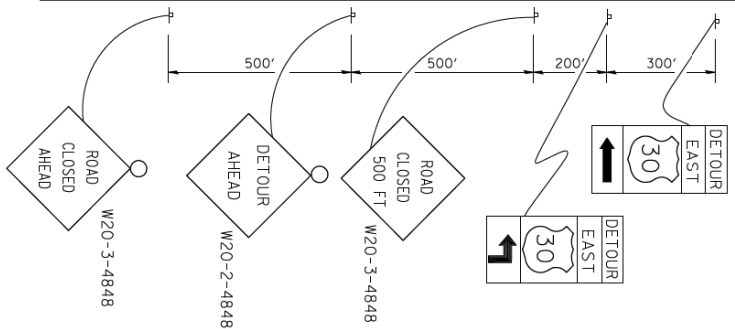
**ARROWS SIGNS**



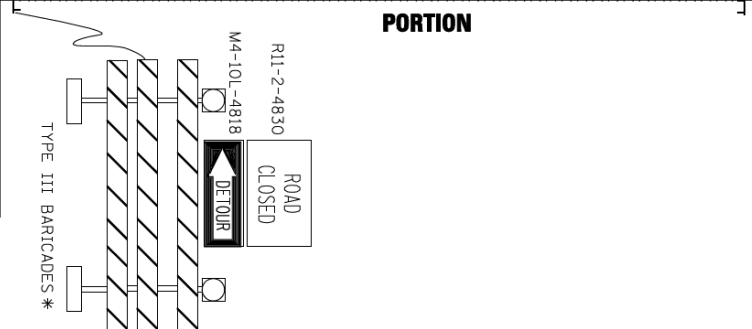
**CARDINAL DIRECTION & DETOUR SIGNS**



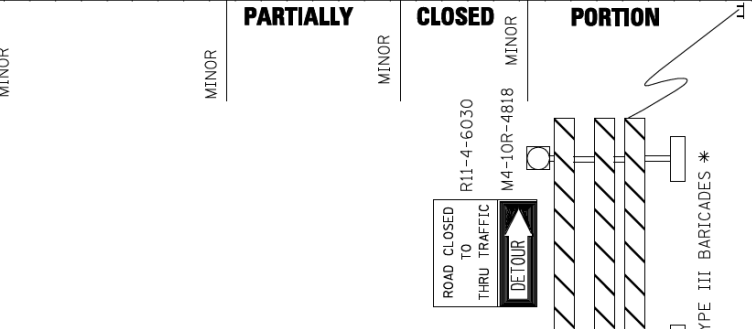
**STATE ROUTE**



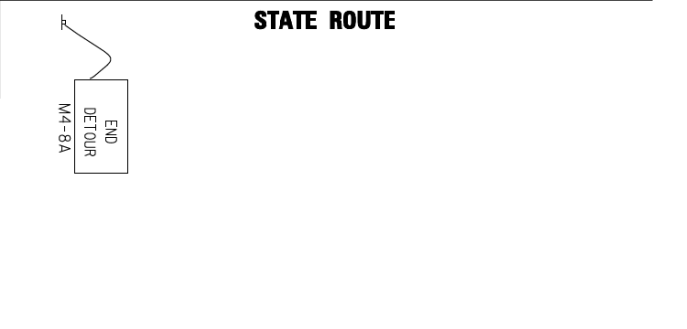
**COMPLETELY CLOSED PORTION**



**PARTIALLY CLOSED PORTION**



**STATE ROUTE**



\* IF A TYPE III BARRICADE WITH AN ATTACHED SIGN PANEL WHICH MEETS NCHRP 350 REQUIREMENTS IS NOT AVAILABLE, THE SIGNS SHALL BE MOUNTED, ABOVE THE BARRICADES, ON SEPARATE SIGNS SUPPORTS THAT MEET NCHRP 350 REQUIREMENTS.

FILE NAME =	USER NAME = drivakosgn	DESIGNED -	REVISED - 10-18-02
ci:\p\work\p\WIDT\DRIVAKOSGN\d8108315\td21.dgn		DRAWN -	REVISED - R. BORO 09-14-09
		CHECKED -	REVISED -
		DATE -	REVISED -

**STATE OF ILLINOIS  
DEPARTMENT OF TRANSPORTATION**

<b>DETOUR SIGNING FOR CLOSING STATE HIGHWAYS</b>	
SCALE: NONE	SHEET NO. 1 OF 1 SHEETS
STA.	TO STA.

F.A. RTE.	SECTION	COUNTY	TOTAL SHEETS	SHEET NO.
	2012-059-BR	COOK	631	600
<b>TC-21</b>		CONTRACT NO. 60J12		
FED. ROAD DIST. NO. 1 [ILLINOIS] FED. AID PROJECT				