

INDEX OF SHEETS

1	COVER SHEET
2	INDEX OF SHEETS, STANDARDS, GENERAL NOTES & COMMITMENTS
3-4	SUMMARY OF QUANTITIES
5	PROPOSED ROADWAY PLAN
6	MAINTENANCE OF TRAFFIC TYPICAL SECTIONS
7-10	MAINTENANCE OF TRAFFIC PLANS
11-12	PAVEMENT MARKING PLANS
13-27	STRUCTURAL PLANS
28	RAISED REFLECTIVE PAVEMENT MARKERS (SNOW-PLOW RESISTANT)
29	TYPICAL PAVEMENT MARKINGS
30	ARTERIAL ROAD INFORMATION SIGN

STATE STANDARDS

280001-07	TEMPORARY EROSION CONTROL SYSTEMS
609006-05	BRIDGE APPROACH PAVEMENT (DRAIN DETAIL)
630001-10	STEEL PLATE BEAM GUARDRAIL
631031-11	TRAFFIC BARRIER TERMINAL, TYPE 6
635006-03	REFLECTOR AND TERMINAL MARKER PLACEMENT
635011-02	REFLECTOR MARKER AND MOUNTING DETAILS
701411-08	LANE CLOSURE, MULTILANE, AT ENTRANCE OR EXIT RAMP, FOR SPEEDS \geq 45 MPH
701422-05	LANE CLOSURE, MULTILANE, FOR SPEEDS \geq 45 MPH TO 55 MPH
701426-05	LANE CLOSURE, MULTILANE, INTERMITTENT OR MOVING OPER., FOR SPEEDS \geq 45 MPH
701431-08	LANE CLOSURE, MULTILANE, UNDIVIDED WITH CROSSOVER, FOR SPEEDS \geq 45 MPH TO 55 MPH
701901-02	TRAFFIC CONTROL DEVICES
704001-07	TEMPORARY CONCRETE BARRIER
720001-01	SIGN PANEL MOUNTING DETAILS
720011-01	METAL POSTS FOR SIGNS, MARKERS & DELINEATORS
728001-01	TELESCOPING STEEL SIGN SUPPORT
729001-01	APPLICATIONS OF TYPES A & B METAL POSTS (FOR SIGNS & MARKERS)
780001-03	TYPICAL PAVEMENT MARKINGS

DISTRICT STANDARDS

TC11	RAISED REFLECTIVE PAVEMENT MARKERS (SNOW-PLOW RESISTANT)
TC13	TYPICAL PAVEMENT MARKINGS
TC22	ARTERIAL ROAD INFORMATION SIGN

COMMITMENTS

NO COMMITMENTS HAVE BEEN MADE FOR THIS PROJECT.

GENERAL NOTES

- THESE PLANS HAVE BEEN PREPARED FROM INFORMATION ACQUIRED FROM EXISTING PLANS AND NOTES RECEIVED FROM IDOT FIELD MAINTENANCE ENGINEERS.
- PLAN DIMENSIONS AND DETAILS RELATIVE TO EXISTING PLANS ARE SUBJECT TO VARIATIONS FOUND IN THE FIELD. THE CONTRACTOR SHALL FIELD VERIFY EXISTING DIMENSIONS AND DETAILS AFFECTING NEW CONSTRUCTION AND MAKE NECESSARY ADJUSTMENTS PRIOR TO CONSTRUCTION OR ORDERING MATERIALS. ANY ADJUSTMENTS PROPOSED BY THE CONTRACTOR MUST BE APPROVED BY THE ENGINEER. SUCH VARIATIONS SHALL NOT BE CAUSE FOR ADDITIONAL COMPENSATION FOR A CHANGE IN THE SCOPE OF WORK, HOWEVER, THE CONTRACTOR WILL BE PAID FOR THE QUANTITY ACTUALLY FURNISHED BASED UPON THE UNIT PRICE.
- QUANTITIES FOR DECK SLAB REPAIR ARE APPROXIMATE. LOCATIONS WILL BE DETERMINED BY THE ENGINEER FOLLOWING THE SCARIFICATION. ACTUAL REPAIR LOCATIONS SHALL BE SHOWN ON THE AS-BUILT PLANS.
- FORTY-EIGHT HOURS BEFORE STARTING EXCAVATION. THE CONTRACTOR WILL CALL J.U.L.I.E. (1-800-892-0123) OR 811 FOR LOCATIONS OF THE EXISTING UTILITIES.
- THE CONTRACTOR WILL NOT BE ALLOWED TO SET UP A YARD OR FIELD OFFICE ON STATE PROPERTY WITHOUT WRITTEN PERMISSION FROM THE DEPARTMENT.
- DO NOT SCALE PLANS FOR CONSTRUCTION DIMENSIONS.
- WHEN ARTIFICIAL LIGHTING IS UTILIZED IN NIGHT OPERATIONS, THE CONTRACTOR SHALL EXERCISE THE UTMOST PRECAUTIONS IN PREVENTING ADVERSE VISIBILITY TO THE MOTORING PUBLIC AS WELL AS ADJOINING RESIDENTIAL AREAS.
- THE CONTRACTOR SHALL OBTAIN ALL NECESSARY PERMITS, AS REQUIRED, PRIOR TO COMMENCING WITH CONSTRUCTION.
- THE CONTRACTOR SHALL CONTACT THE TRAFFIC CONTROL SUPERVISOR AT (847) 705-4470 A MINIMUM OF 72 HOURS IN ADVANCE OF BEGINNING WORK.
- THE CONTRACTOR SHALL CONTACT DON CHIARUGI, THE AREA TRAFFIC FIELD TECHNICIAN, AT (847) 741-9857 TWO (2) WEEKS PRIOR TO THE PLACEMENT OF PERMANENT PAVEMENT MARKINGS.
- ALL DAMAGE TO EXISTING PAVEMENT MARKINGS OUTSIDE THE REMOVAL LINE SHOWN ON THE PLANS SHALL BE REPLACED AT THE CONTRACTOR'S EXPENSE.
- THE CONTRACTOR SHALL USE CARE IN REMOVING OR EXCAVATING NEAR ALL EXISTING ITEMS WHICH WILL REMAIN. ANY DAMAGE DONE TO EXISTING ITEMS BY THE CONTRACTOR SHALL BE REPAIRED AT THE CONTRACTOR'S EXPENSE.
- THE WORK AND MATERIALS REQUIRED TO CONNECT ANY CULVERT OR SEWER TO ANOTHER DRAINAGE STRUCTURE OR PIPE WILL NOT BE PAID FOR SEPARATELY, BUT SHALL BE CONSIDERED AS INCLUDED IN THE CONTRACT UNIT PRICE BID FOR THE CULVERT OR SEWER ITEMS.
- REMOVAL OF EXISTING CORRUGATED STEEL PIPE ENCOUNTERED DURING EXCAVATION SHALL NOT BE MEASURED FOR SEPARATE PAYMENT, BUT SHALL BE CONSIDERED INCIDENTAL TO THE COST FOR EARTH EXCAVATION.
- BEFORE BEGINNING ANY WORK, THE CONTRACTOR SHALL RETAIN AND RECORD FOR FUTURE REFERENCE, ALL EXISTING PAVEMENT MARKING LINES (RAISED REFLECTIVE PAVEMENT MARKERS) IN ORDER THAT THESE LOCATIONS CAN BE RE-ESTABLISHED FOR STRIPING. EXACT LOCATIONS OF ALL PAVEMENT MARKINGS SHALL BE AS DIRECTED BY THE ENGINEER.
- AN OPER 2410 FORM REPORTING A WIDTH RESTRICTION DURING CONSTRUCTION SHALL BE SUBMITTED TO IDOT CENTRAL OFFICE IN SPRINGFIELD, BUREAU OF OPERATIONS A MINIMUM OF 21 DAYS PRIOR TO INSTALLING TEMPORARY CONCRETE BARRIER.


HMA MIXTURE REQUIREMENTS

MIXTURE TYPE	AIR VOIDS @ Ndes	LIFT THICKNESS
SURFACE COURSE (VARIABLE THICK. - APPROACH SLAB/BUTT JOINT)		
HOT-MIX ASPHALT SURFACE COURSE, MIX "D" N70 (IL 9.5 mm)	4% @ 70 Gyr.	1-3/4"
SURFACE COURSE (2" - TEMPORARY PAVEMENT)		
HOT-MIX ASPHALT SURFACE COURSE, MIX "D", N70 (IL 9.5 mm)	4% @ 70 Gyr.	2"
BINDER COURSE (8" - TEMPORARY PAVEMENT)		
HOT-MIX ASPHALT BINDER COURSE, IL-19.0, N70	4% @ 70 Gyr.	2-1/4" MIN.

THE UNIT WEIGHT USED TO CALCULATE ALL HMA SURFACE MIXTURE QUANTITIES IS 112 LBS/SQ YD/IN.

THE "AC TYPE" FOR POLYMERIZED HMA MIXES SHALL BE "SBS/SBR PG 76-22" AND FOR NON-POLYMERIZED HMA THE "AC TYPE" SHALL BE "PG 64-22" UNLESS MODIFIED BY DISTRICT ONE SPECIAL PROVISIONS.

FOR USE OF RECYCLED MATERIALS SEE DISTRICT ONE SPECIAL PROVISIONS.

 LIN ENGINEERING, LTD. Consulting Engineers Springfield, Illinois	USER NAME - Plotted by Fred 576 DESIGNED - SEW DRAWN - RK CHECKED - SEW DATE - 11/2011	REVISED - REVISED - REVISED - REVISED -	STATE OF ILLINOIS DEPARTMENT OF TRANSPORTATION	INDEX OF SHEETS, STANDARDS, GENERAL NOTES & COMMITMENTS IL 56 (BUTTERFIELD RD.) OVER IL 38 (ROOSEVELT RD.)	F.A.P. SECTION COUNTY TOTAL SHEET NO. 347 JR-HB-1-1 OUPAGE 30 2	
	PLOT SCALE - 2,0000 "/ IN. PLOT DATE - 12/5/2012				SHEET NO. 1 OF 1 SHEETS	CONTRACT NO. 60N77
					FED. ROAD DIST. NO. 1 ILLINOIS FED. AID PROJECT	

Rev. 4-4-13

URBAN
100% STATE

URBAN
100% STATE

CODE NUMBER	ITEM	UNIT	TOTAL QUANTITY	0014 STRUCTURE	0004 ROADWAY
20100500	TREE REMOVAL, ACRES	ACRES	0.4		0.4
20200100	EARTH EXCAVATION	CU YD	24		24
20201200	REMOVAL AND DISPOSAL OF UNSUITABLE MATERIAL	CU YD	5		5
20400800	FURNISHED EXCAVATION	CU YD	15	15	
20800150	TRENCH BACKFILL	CU YD	22		22
21101625	TOPSOIL FURNISH AND PLACE, 6"	SQ YD	86		86
25000300	SEEDING, CLASS 3	ACRE	0.25		0.25
25100630	EROSION CONTROL BLANKET	SQ YD	86		86
28000400	PERIMETER EROSION BARRIER	FOOT	54		54
28000500	INLET AND PIPE PROTECTION	EACH	1		1
28000510	INLET FILTERS	EACH	1		1
28100105	STONE RIPRAP, CLASS A3	SQ YD	1000		1000
28200200	FILTER FABRIC	SQ YD	1000		1000
40600100	BITUMINOUS MATERIALS (PRIME COAT)	GALLON	587	71	516
40600300	AGGREGATE (PRIME COAT)	TON	1		1
40603340	HOT-MIX ASPHALT SURFACE COURSE, MIX "D" N70	TON	49	49	
44003100	MEDIAN REMOVAL	SQ FT	2895		2895
44004250	PAVED SHOULDER REMOVAL	SQ YD	1049		1049
50102400	CONCRETE REMOVAL	CU YD	104.0	104.0	
50104650	SLOPE WALL REMOVAL	SQ YD	51	51	
50157300	PROTECTIVE SHIELD	SQ YD	379	379	
50300255	CONCRETE SUPERSTRUCTURE	CU YD	138.8	138.8	
50300260	BRIDGE DECK GROOVING	SQ YD	1159	1159	

CODE NUMBER	ITEM	UNIT	TOTAL QUANTITY	0014 STRUCTURE	0004 ROADWAY
50300300	PROTECTIVE COAT	SQ YD	243	243	
50800205	REINFORCEMENT BARS, EPOXY COATED	POUND	20360	20360	
50800515	BAR SPLICERS	EACH	78	78	
51100100	SLOPE WALL 4 INCH	SQ YD	51	51	
52000110	PREFORMED JOINT STRIP SEAL	FOOT	143	143	
52100520	ANCHOR BOLTS, 1"	EACH	80	80	
54002020	EXPANSION BOLTS, 3/4 INCH	EACH	342	342	
60100945	PIPE DRAINS 12"	FOOT	60		60
60500060	REMOVING INLETS	EACH	1		1
60900140	TYPE B INLET BOX, STANDARD 609006	EACH	1		1
60900515	CONCRETE THRUST BLOCKS	EACH	2		2
63000001	STEEL PLATE BEAM GUARDRAIL, TYPE A, 6 FOOT POSTS	FOOT	50.0		50.0
63100085	TRAFFIC BARRIER TERMINAL, TYPE 6	EACH	2		2
63200310	GUARDRAIL REMOVAL	FOOT	185		185
67000400	ENGINEER'S FIELD OFFICE, TYPE A	CAL MO	6		6
67100100	MOBILIZATION	L SUM	1		1
70103815	TRAFFIC CONTROL SURVEILLANCE	CAL DA	20		20
70301000	WORK ZONE PAVEMENT MARKING REMOVAL	SQ FT	4194		4194
70400100	TEMPORARY CONCRETE BARRIER	FOOT	550		550
70400200	RELOCATE TEMPORARY CONCRETE BARRIER	FOOT	550		550
70600260	IMPACT ATTENUATORS, TEMPORARY (FULLY REDIRECTIVE, NARROW), TEST LEVEL 3	EACH	3		3
70600332	IMPACT ATTENUATORS, RELOCATE (FULLY REDIRECTIVE, NARROW), TEST LEVEL 3	EACH	3		3
78100200	TEMPORARY RAISED REFLECTIVE PAVEMENT MARKERS	EACH	24		24

40603340 HOT-MIX ASPHALT SURFACE COURSE, MIX "D" N70

23 DENOTES SPECIALTY ITEM

Rev. 6-4-13



USER NAME - Plotted by Fred 976	DESIGNED - SEW	REVISED -
PLOT SCALE - 2.0000 / IN.	DRAWN - RK	REVISED -
PLOT DATE - 12/5/2012	CHECKED - SEW	REVISED -
	DATE - 11/2011	REVISED -

STATE OF ILLINOIS
DEPARTMENT OF TRANSPORTATION

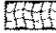
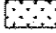


SUMMARY OF QUANTITIES	
IL 56 (BUTTERFIELD RD.) OVER IL 38 (ROOSEVELT RD.)	
SCALE: N/A	SHEET NO. 1 OF 2 SHEETS

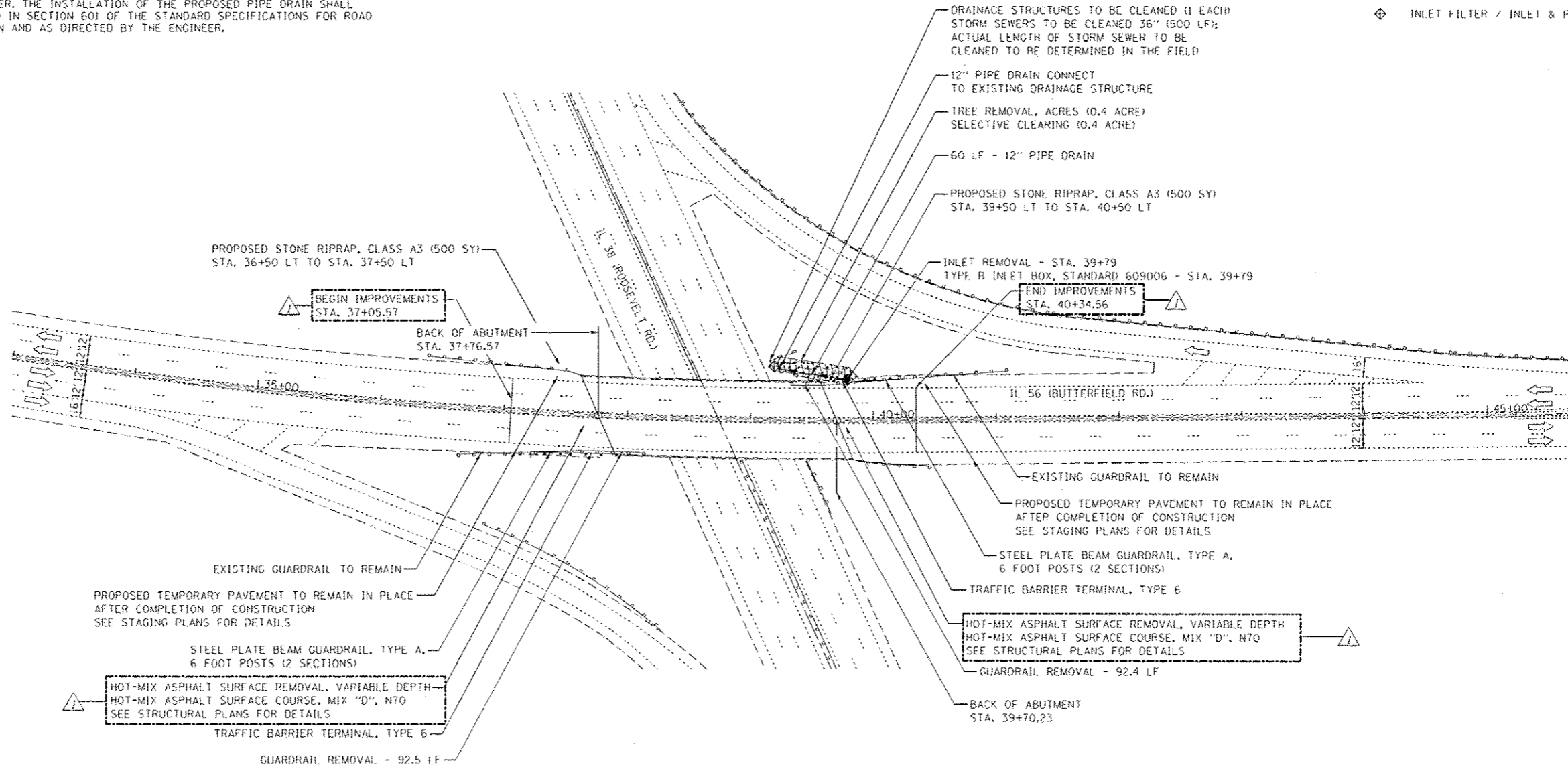
F.A.P. RTE. 347	SECTION JR-HB-1-1	COUNTY	TOTAL SHEET NO. 30
DUPAGE		3	
FED. ROAD DIST. NO. 1		ILLINOIS FED. AID PROJECT	
CONTRACT NO. 60N77			

NOTES:

1. IN ADDITION TO FIELD REVIEW AND AERIAL DATA, PLAN DIMENSIONS AND DETAILS RELATIVE TO THE EXISTING FACILITIES HAVE BEEN TAKEN FROM EXISTING PLANS AND ARE SUBJECT TO CONSTRUCTION VARIATIONS. IT SHALL BE THE CONTRACTOR'S RESPONSIBILITY TO VERIFY SUCH DIMENSIONS AND DETAILS IN THE FIELD. SUCH VARIATIONS SHALL NOT BE A CAUSE FOR ADDITIONAL COMPENSATION DUE TO A CHANGE IN THE SCOPE OF THE WORK, HOWEVER, THE CONTRACTOR WILL BE PAID FOR THE QUANTITY ACTUALLY FURNISHED AT THE BID PRICE FOR THE WORK.
2. ALL PROPOSED INVERTS AND RIM ELEVATIONS SHALL BE FIELD DETERMINED AND APPROVED BY THE ENGINEER. THE INSTALLATION OF THE PROPOSED PIPE DRAIN SHALL BE COMPLETED AS STATED IN SECTION 601 OF THE STANDARD SPECIFICATIONS FOR ROAD AND BRIDGE CONSTRUCTION AND AS DIRECTED BY THE ENGINEER.

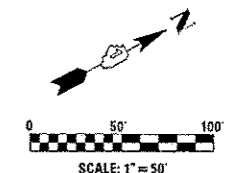
LEGEND

-  EROSION CONTROL BLANKET
-  SEEDING, CLASS 3
-  PERIMETER EROSION BARRIER (PEB)
-  INLET FILTER / INLET & PIPE PROTECTION



LIMITS OF PROPOSED IMPROVEMENTS:

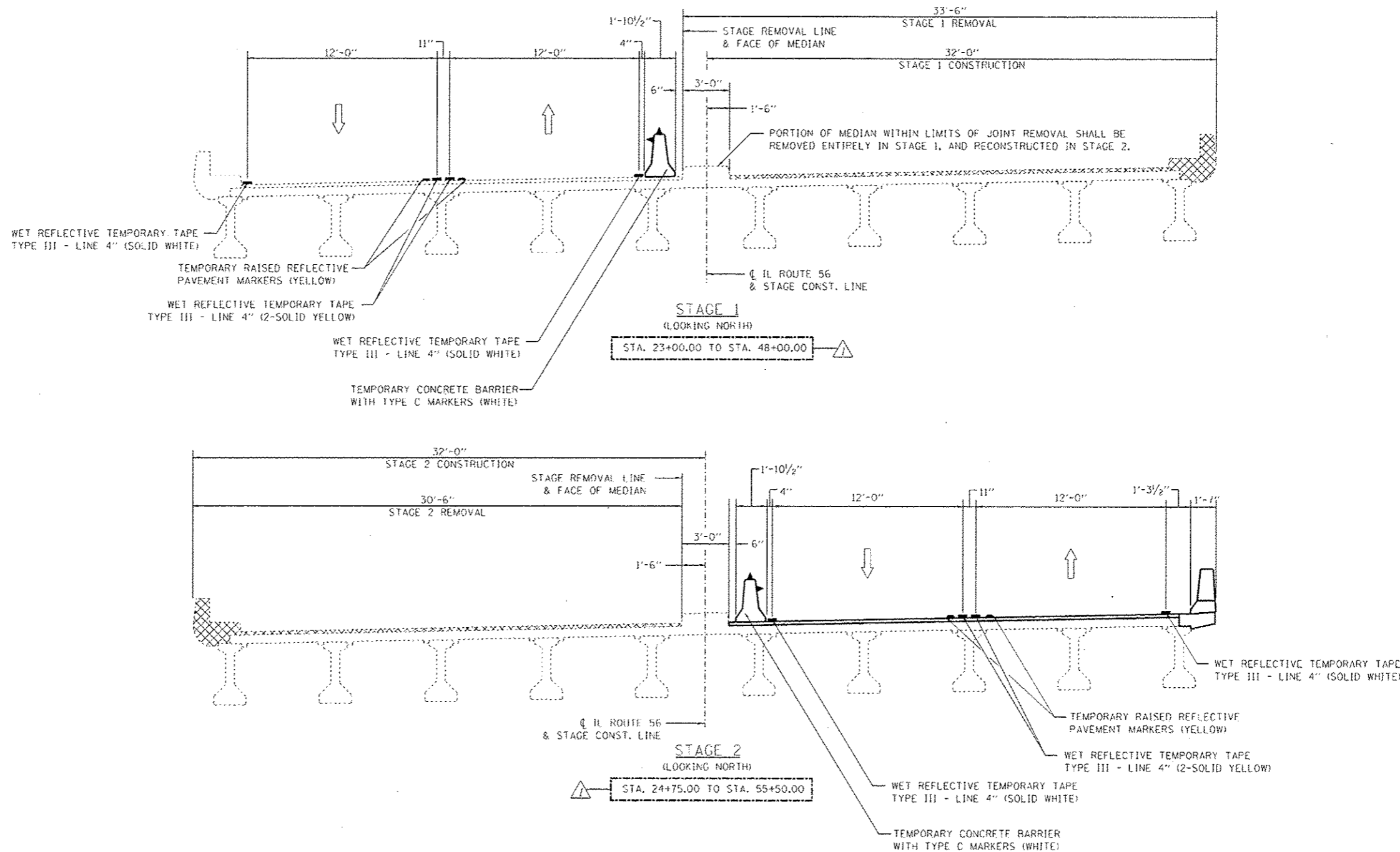
- STEEL PLATE BEAM GUARDRAIL, TYPE A, 6 FOOT POSTS
STA. 37+23.69 TO STA. 37+48.48 RT
STA. 40+00.41 TO STA. 40+25.50 LT
- TRAFFIC BARRIER TERMINAL, TYPE 6
STA. 37+48.48 TO STA. 37+93.80 RT
STA. 39+54.47 TO STA. 40+00.41 LT
- GUARDRAIL REMOVAL
STA. 37+23.69 TO STA. 38+15.35 RT
STA. 39+32.65 TO STA. 40+25.50 LT



USER NAME - RUSCH	DESIGNED - SEW	REVISED - 5/21/2013 FML
DRAWN - RK	CHECKED - SEW	REVISI
PLOT SCALE - 1\"/>		

**STATE OF ILLINOIS
DEPARTMENT OF TRANSPORTATION**

PROPOSED ROADWAY PLAN		F.A.P. RTE.	SECTION	COUNTY	TOTAL SHEETS	SHEET NO.
IL 56 (BUTTERFIELD RD.) OVER IL 38 (ROOSEVELT RD.)		347	JR-HB-1	DUPAGE	30	5
SCALE: 1\"/>						



NOTES:

1. ALL HORIZONTAL DIMENSIONS ARE MEASURED RADIALLY, UNLESS OTHERWISE NOTED.
2. SEE STRUCTURAL PLANS FOR BEAM SPACING INFORMATION.
3. CROSS HATCHING INDICATES REMOVAL OF EXISTING CONCRETE.

4. STATIONING PROVIDED COVERS THE ENTIRE MAINTENANCE OF TRAFFIC LENGTH INCLUDING BOTH THE AT GRADE AND ON STRUCTURE CONFIGURATIONS. SPECIFIC LOCATIONS OF LANE DROP TAPERS AND VARIATIONS TO THE TEMPORARY PAVEMENT MARKINGS SHALL BE AS SHOWN IN THE MAINTENANCE OF TRAFFIC PLANS.



USER NAME - RLSEK4	DESIGNED - SEW	REVISED - 5/21/2013 F.M.L.
FL07 SCALE - 1/8"=1'-0"	DRAWN - RK	REVISED -
PL07 DATE - 4/24/14	CHECKED - SEW	REVISED -
	DATE - 11/2011	REVISED -

**STATE OF ILLINOIS
DEPARTMENT OF TRANSPORTATION**

MAINTENANCE OF TRAFFIC TYPICAL SECTIONS	
IL 56 (BUTTERFIELD RD.) OVER IL 38 (ROOSEVELT RD.)	
SCALE: N.T.S.	SHEET NO. 1 OF 1 SHEETS
STA. TO STA.	

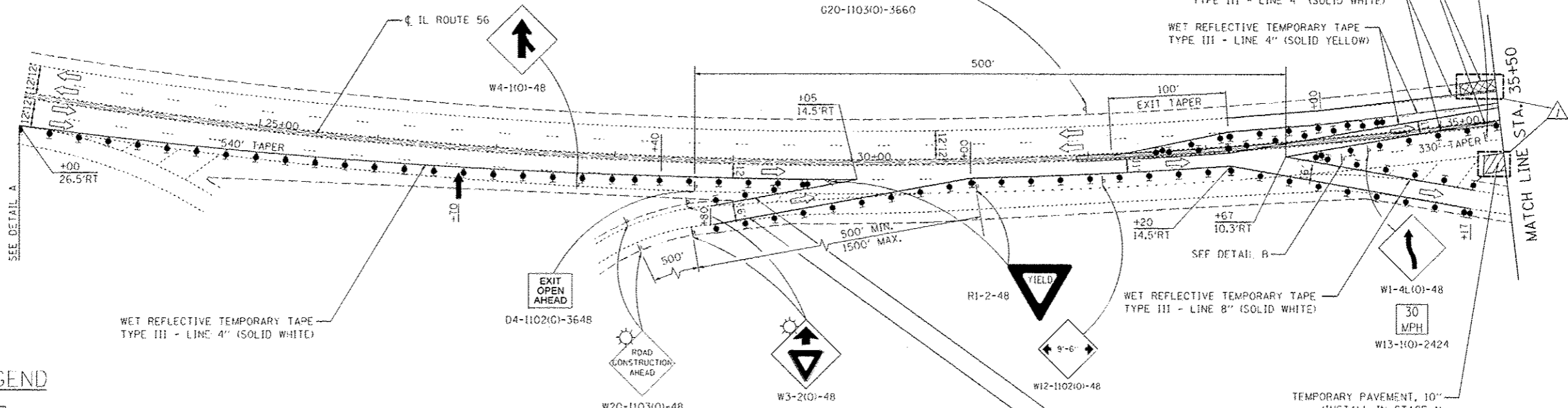
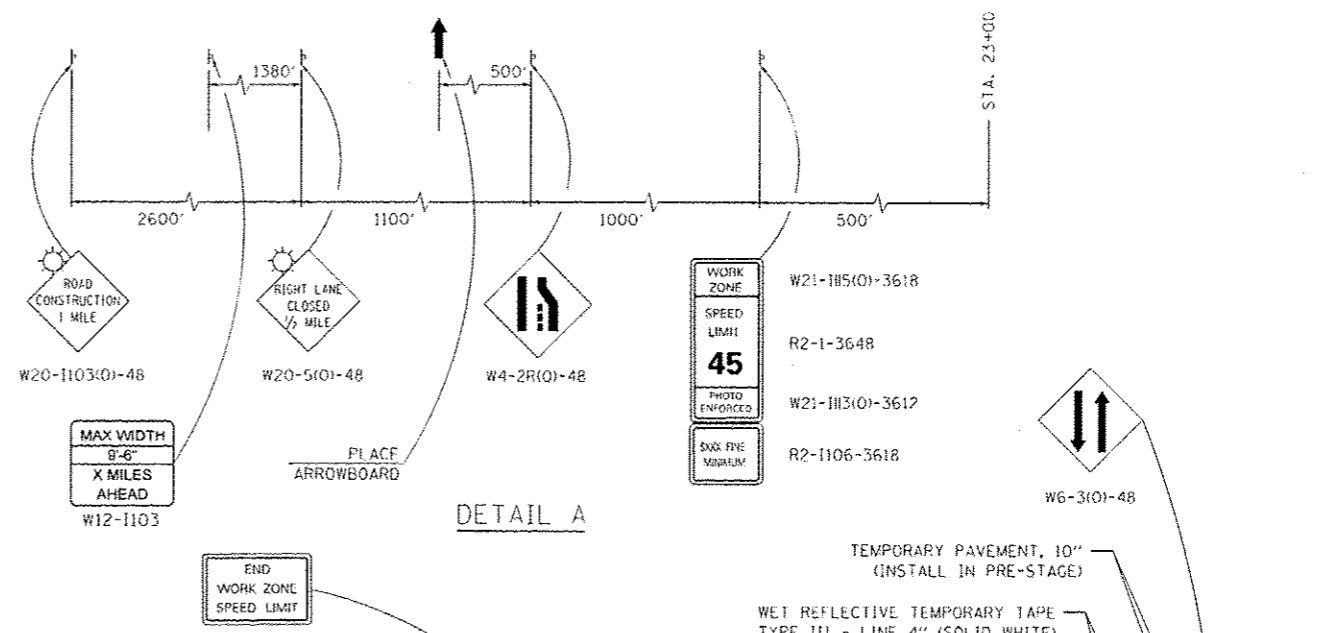
F.A.P. RTE. 347	SECTION JR-HB-1-1	COUNTY DUPAGE	TOTAL SHEETS 30	SHEET NO. 6
FEB. ROAD DIST. NO. 1			ILLINOIS FED. AID PROJECT	
CONTRACT NO. 60N77				

PRE-STAGE:

1. REMOVE EXISTING RAISED MEDIAN AND PLACE TEMP. PAVEMENT FROM STA. 31+90 TO 36+90, AND STA. 40+60 TO STA. 45+25, UNDER HIGHWAY STANDARD 701422-05. CONTRACTOR SHALL RECORD DIMENSIONS OF EXISTING MEDIAN TO BE APPROVED BY THE ENGINEER PRIOR TO REMOVAL. DEPTH OF MEDIAN SHALL BE RECORDED AFTER REMOVAL. RECORDING OF DIMENSIONS AND MEDIAN REMOVAL SHALL BE PAID AS "MEDIAN REMOVAL".
2. REMOVE EXISTING SHOULDER AND PLACE TEMP. PAVEMENT FROM STA. 35+20 LT. TO STA. 37+63 LT., AND STA. 39+57 LT. TO STA. 42+16 LT., UNDER HIGHWAY STANDARD 701422-05.
3. TEMP. PAVEMENT SHALL REMAIN IN PLACE AFTER COMPLETION OF PROJECT AT LOCATIONS LISTED IN NOTE 2.

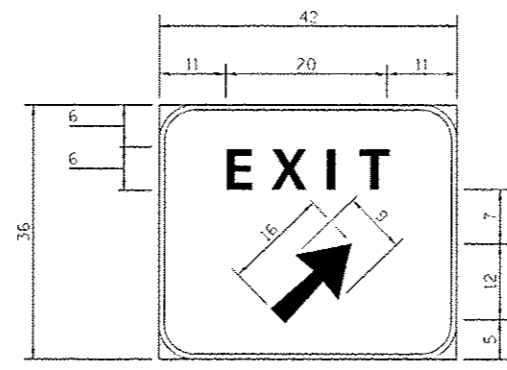
STAGE 1 CONSTRUCTION:

1. REMOVE CONFLICTING EXISTING PAVEMENT MARKINGS AND RAISED REFLECTIVE PAVEMENT MARKERS UNDER HIGHWAY STANDARD 701426-05.
2. CLOSE NORTHBOUND LANES AND CROSS-OVER IN ACCORDANCE WITH HIGHWAY STANDARDS 701411-08, 701431-08, AND AS SHOWN IN THE PLANS.
3. PERFORM BRIDGE, BRIDGE APPROACH PAVEMENT, AND GUARDRAIL RECONSTRUCTION ON NORTHBOUND LANES (EAST HALF OF BRIDGE) AS SHOWN IN THE PLANS.
4. REMOVE EXISTING SHOULDER AND PLACE TEMPORARY PAVEMENT FROM STA. 35+32 RT. TO 37+92 RT. AND STA. 39+82 RT. AND STA. 42+31 RT. (TO REMAIN IN PLACE UPON COMPLETION OF PROJECT).



LEGEND

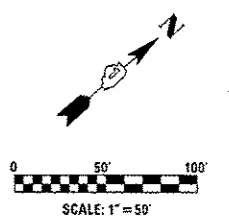
- WORK ZONE
- IMPACT ATTENUATORS, TEMPORARY (FULLY REDIRECTIVE, NARROW), TEST LEVEL 3
- TEMPORARY CONCRETE BARRIER
- SIGN
- DIRECTION INDICATOR BARRICADE WITH STEADY BURN MONODIRECTIONAL LIGHT
- TYPE II BARRICADE OR DRUM WITH STEADY BURN MONODIRECTIONAL LIGHT
- ARROWBOARD
- TYPE III BARRICADE W/2 FLASHING BEACONS (NO. OF BARRICADES AS DIRECTED BY ENGINEER)



Background - Green
 Border and legend - White
 "D" size letters
 All dimensions shown are in INCHES
 EXIT SIGN - SPECIAL

NOTES:

1. ANY CLOSURE TO IL ROUTE 38 (ROOSEVELT RD.) OR EASTBOUND IL 56 SHALL BE IN ACCORDANCE WITH HIGHWAY STANDARD 701422-05.



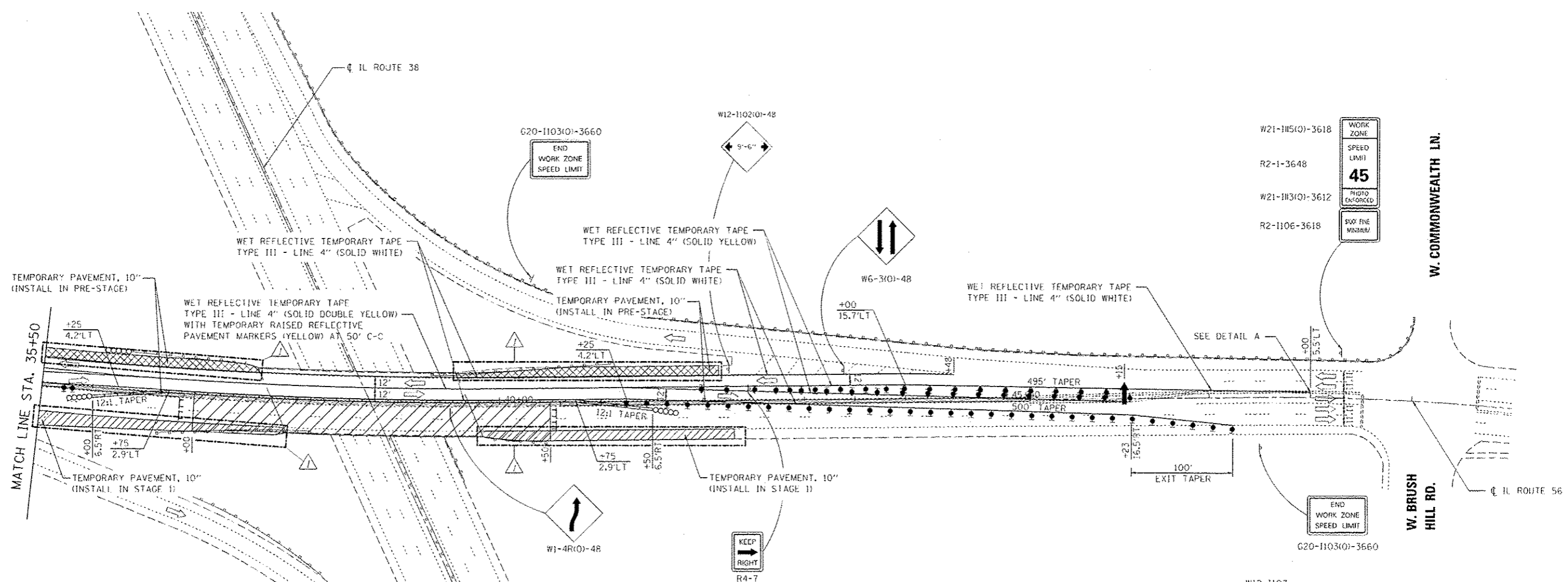
LIN ENGINEERING, LTD.
 Consulting Engineers
 Springfield, Illinois

USER NAME - KLSR4	DESIGNED - SEW	REVISED - 5/21/2013 FVL
DRAWN - RK	CHECKED - SEW	DATE - 11/2011
PLOT SCALE - 1/4"=1'-0"		
PLOT DATE - 4/24/14		

**STATE OF ILLINOIS
 DEPARTMENT OF TRANSPORTATION**

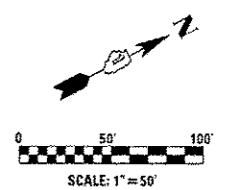
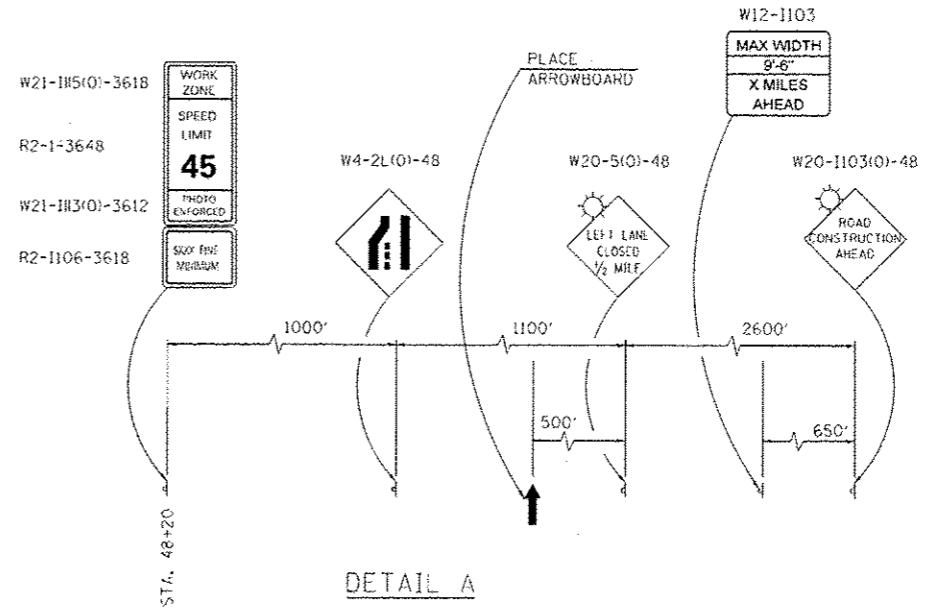
MAINTENANCE OF TRAFFIC - STAGE 1	
IL 56 (BUTTERFIELD RD.) OVER IL 38 (ROOSEVELT RD.)	
SCALE: 1/4"=1'-0"	SHEET NO. 1 OF 2 SHEETS
STA. 23+00 TO STA. 35+50	

F.A.P. R.I.E. 347	SECTION JR-HB-1-1	COUNTY DUPAGE	TOTAL SHEETS 30	SHEET NO. 7
CONTRACT NO. 60N77				
FED. ROAD DIST. NO. 1 ILLINOIS FED. AID PROJECT				



LEGEND

- WORK ZONE
- IMPACT ATTENUATORS, TEMPORARY (FULLY REDIRECTIVE, NARROW), TEST LEVEL 3
- TEMPORARY CONCRETE BARRIER
- SIGN
- DIRECTION INDICATOR BARRICADE WITH STEADY BURN MONODIRECTIONAL LIGHT
- TYPE II BARRICADE OR DRUM WITH STEADY BURN MONODIRECTIONAL LIGHT
- ARROWBOARD
- TYPE III BARRICADE W/2 FLASHING BEACONS (NO. OF BARRICADES AS DIRECTED BY ENGINEER)



LIN ENGINEERING, LTD.
Consulting Engineers
Springfield, Illinois

USER NAME - #USER#	DESIGNED - SEW	REVISED - 5/21/2013 PML
PLOT SCALE - #SCALE#	DRAWN - BK	REVISED -
PLOT DATE - #DATE#	CHECKED - SEW	REVISED -
	DATE - 11/2011	REVISED -

**STATE OF ILLINOIS
DEPARTMENT OF TRANSPORTATION**

**MAINTENANCE OF TRAFFIC - STAGE 1
IL 56 (BUTTERFIELD RD.) OVER IL 38 (ROOSEVELT RD.)**

SCALE: 1"=50' SHEET NO. 2 OF 2 SHEETS STA. 35+50 TO STA. 50+00

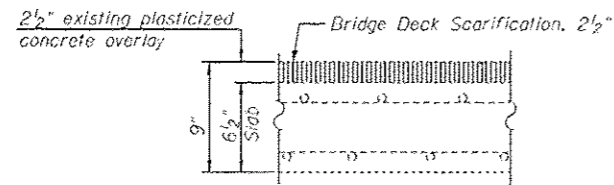
F.A.P. RTE.	SECTION	COUNTY	TOTAL SHEETS	SHEET NO.
347	JR-HB-1-1	DUPAGE	30	8
CONTRACT NO. 60N77				

FED. ROAD DIST. NO. 1 ILLINOIS FED. AID PROJECT

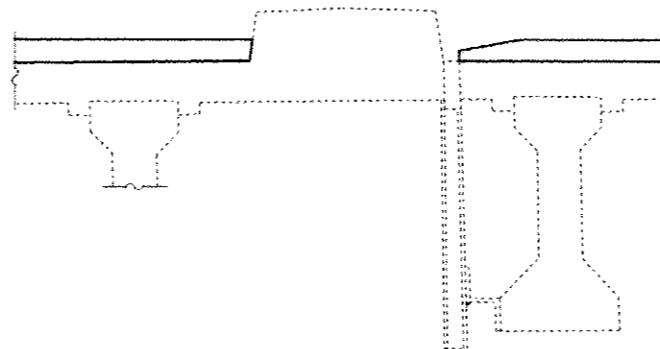
GENERAL NOTES

Reinforcement bars designated (E) shall be epoxy coated.
 Plan dimensions and details relative to existing plans are subject to nominal construction variations. The Contractor shall field verify existing dimensions and details affecting new construction and make necessary approved adjustments prior to construction or ordering of materials. Such variations shall not be cause for additional compensation for a change in scope of the work, however, the Contractor will be paid for the quantity actually furnished at the unit price bid for the work.
 Joint openings shall be adjusted according to Article 520.04 of the Std. Specs. when the concrete is poured at an ambient temperature other than 50° F.
 The existing bearing plate coating contains lead. The Contractor shall take appropriate precautions to deal with the presence of lead on this project.
 All structural steel shall conform to AASHTO Classification M270 Gr. 36 unless otherwise noted.

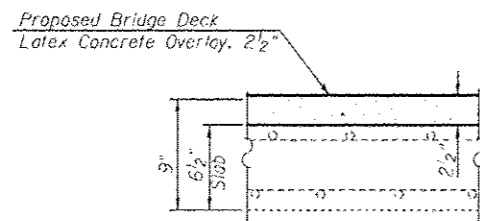
Existing bridge underdeck lighting is present at this location. All existing locations shall be protected and maintained in accordance with the special provision for "PROTECT AND MAINTAIN EXISTING UNDERPASS LUMINAIRE" and as determined by the Engineer.



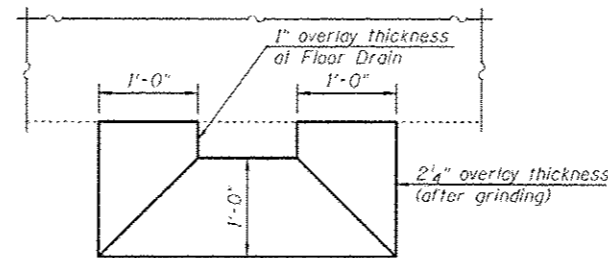
EXISTING BRIDGE DECK CROSS SECTION



DRAIN DETAILS
 (Except at Floor Drains Being Plugged)



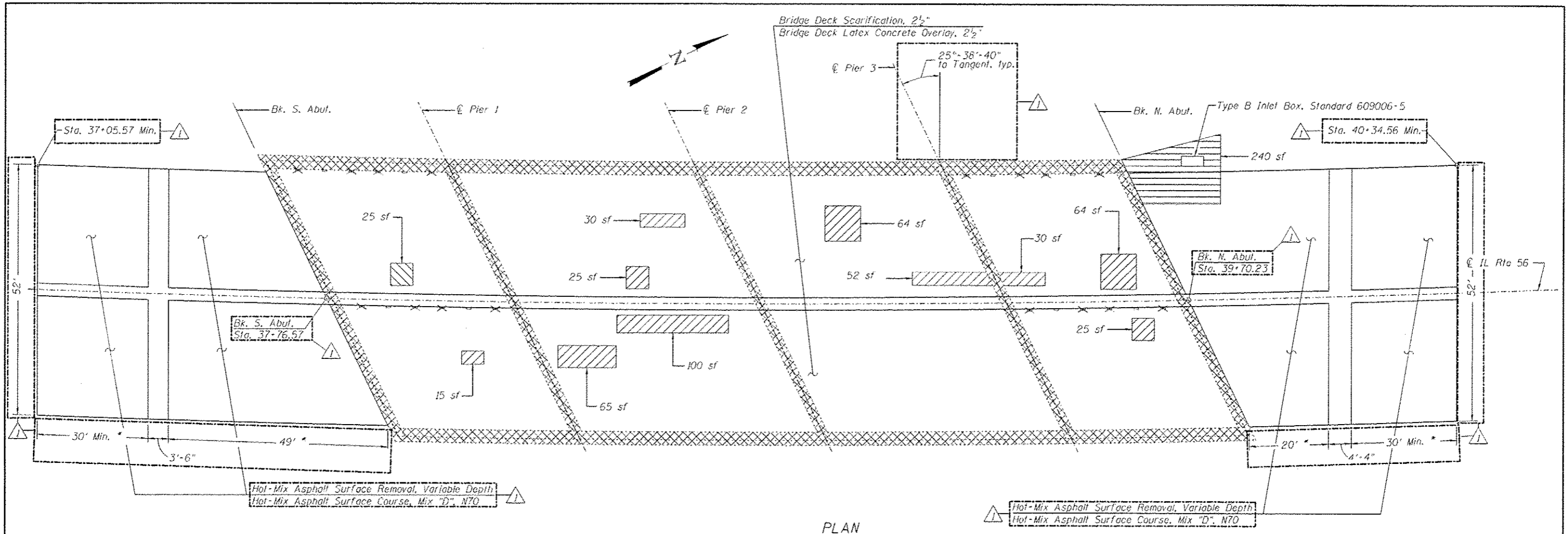
PROPOSED BRIDGE DECK CROSS SECTION



OVERLAY AT DRAIN

TOTAL BILL OF MATERIAL

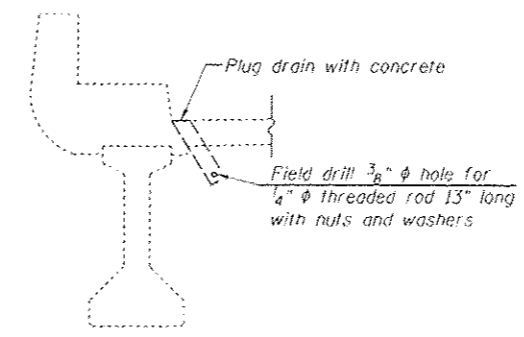
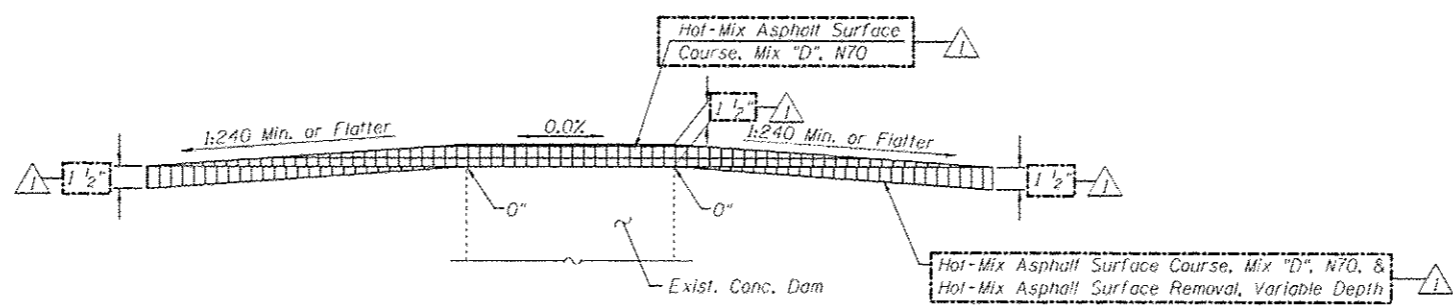
ITEM	UNIT	SUPER	SUB	TOTAL
Furnished Excavation	Cu. Yd.	-	15	15
Bituminous Materials (Prime Coat)	Gallon	71	-	71
Hot-Mix Asphalt Surface Course, Mix "D", N70	Tons	74	-	74
Concrete Removal	Cu. Yd.	104.0	-	104.0
Slope Wall Removal	Sq. Yd.	-	51	51
Protective Shield	Sq. Yd.	379	-	379
Concrete Superstructure	Cu. Yd.	138.8	-	138.8
Bridge Deck Grooving	Sq. Yd.	1159	-	1159
Protective Coat	Sq. Yd.	243	-	243
Reinforcement Bars, Epoxy Coated	Pound	20360	-	20360
Bar Splicers	Each	78	-	78
Slope Wall, 4 inch	Sq. Yd.	-	51	51
Preformed Joint Strip Seal	Foot	143	-	143
Anchor Bolts, 1"	Each	80	-	80
Floor Drains to be Cleaned	Each	8	-	8
Clean & Reseal Relief Joint	Foot	52	-	52
Hot-Mix Asphalt Surface Removal, Variable Depth	Sq. Yd.	707	-	707
Elastomeric Bearing Assembly, Type II (Special)	Each	40	-	40
Approach Slab Removal & Replacement	Sq. Yd.	30	-	30
Jack and Remove Existing Bearings	Each	40	-	40
Bridge Deck Latex Concrete Overlay, 2 1/2"	Sq. Yd.	1155	-	1155
Bridge Deck Scarification, 2 1/2"	Sq. Yd.	1155	-	1155
Structural Repair of Concrete (Depth Equal to or Less Than 5 in.)	Sq. Ft.	-	259	259
Plug Existing Deck Drains	Each	16	-	16
Deck Slab Repair (Full Depth, Type II)	Sq. Yd.	3	-	3
Temporary Shoring and Cribbing	Each	-	3	3
Expansion Bolts, 3/4"	Each	342	-	342



PLAN

LEGEND

- Concrete Removal
- Approach Slab Removal & Replacement
- Deck Slab Repair (Full Depth, Type II)
- Deck Slab Repair (Partial) (For Information Only)
- Hot-Mix Asphalt Surface Course, Mix "D", N70
- Hot-Mix Asphalt Surface Course, Mix "D", N70 & Hot-Mix Asphalt Surface Removal, Variable Depth
- Plug Existing Deck Drains
- Clean Existing Deck Drains
- sf* Square Feet



Notes:

Deck Condition Survey performed September, 2011.
 There is an estimated 52 sq. yards of Partial Depth Deck Slab Repair required. Partial depth repairs shall be included with Bridge Deck Scarification, see Special Provision for Bridge Deck Latex Concrete Overlay.
 Repair of the existing deck slab shall include but may not be limited to the areas shown. The actual areas to be repaired will be determined by the Engineer at the time of construction. The Engineer shall show actual location of repairs on As-Built plans. See sheet 6 thru 8 of 15 for details of concrete removal.
 Furnished Excavation includes excavation at Type B Inlet Box, Standard 609006.

BILL OF MATERIAL

Item	Unit	Total
Protective Shield	Sq. Yd.	379
Deck Slab Repair (Full Depth, Type II)	Sq. Yd.	3
Concrete Removal	Cu. Yd.	104.0
Bridge Deck Latex Concrete Overlay, 2 1/2"	Sq. Yd.	1155
Bridge Deck Scarification, 2 1/2"	Sq. Yd.	1155
Plug Existing Deck Drains	Each	16
Floor Drains to be Cleaned	Each	8
Approach Slab Removal & Replacement	Sq. Yd.	30
Hot-Mix Asphalt Surface Removal, Variable Depth	Sq. Yd.	707
Hot-Mix Asphalt Surface Course, Mix "D", N70	Tons	74
Furnished Excavation	Cu. Yd.	15

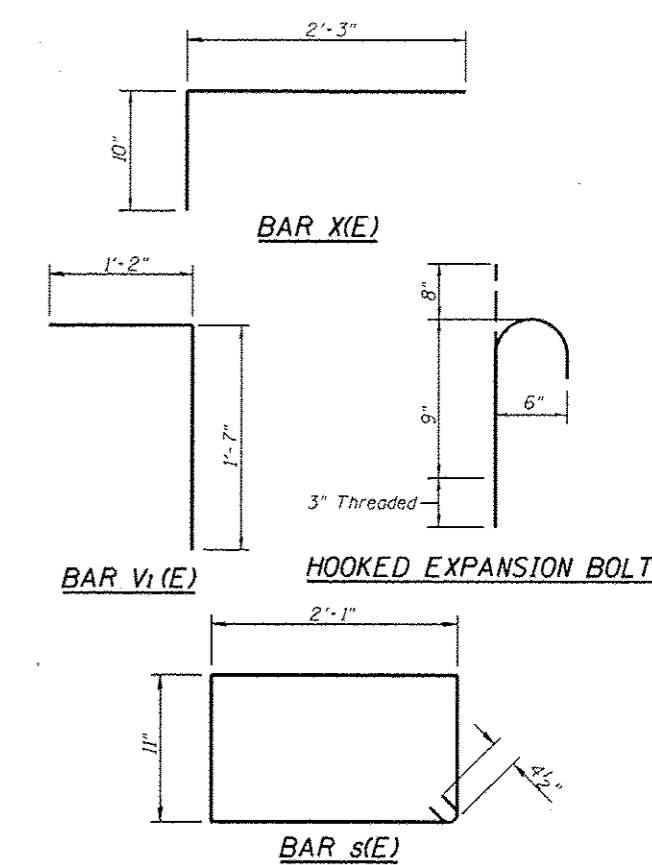
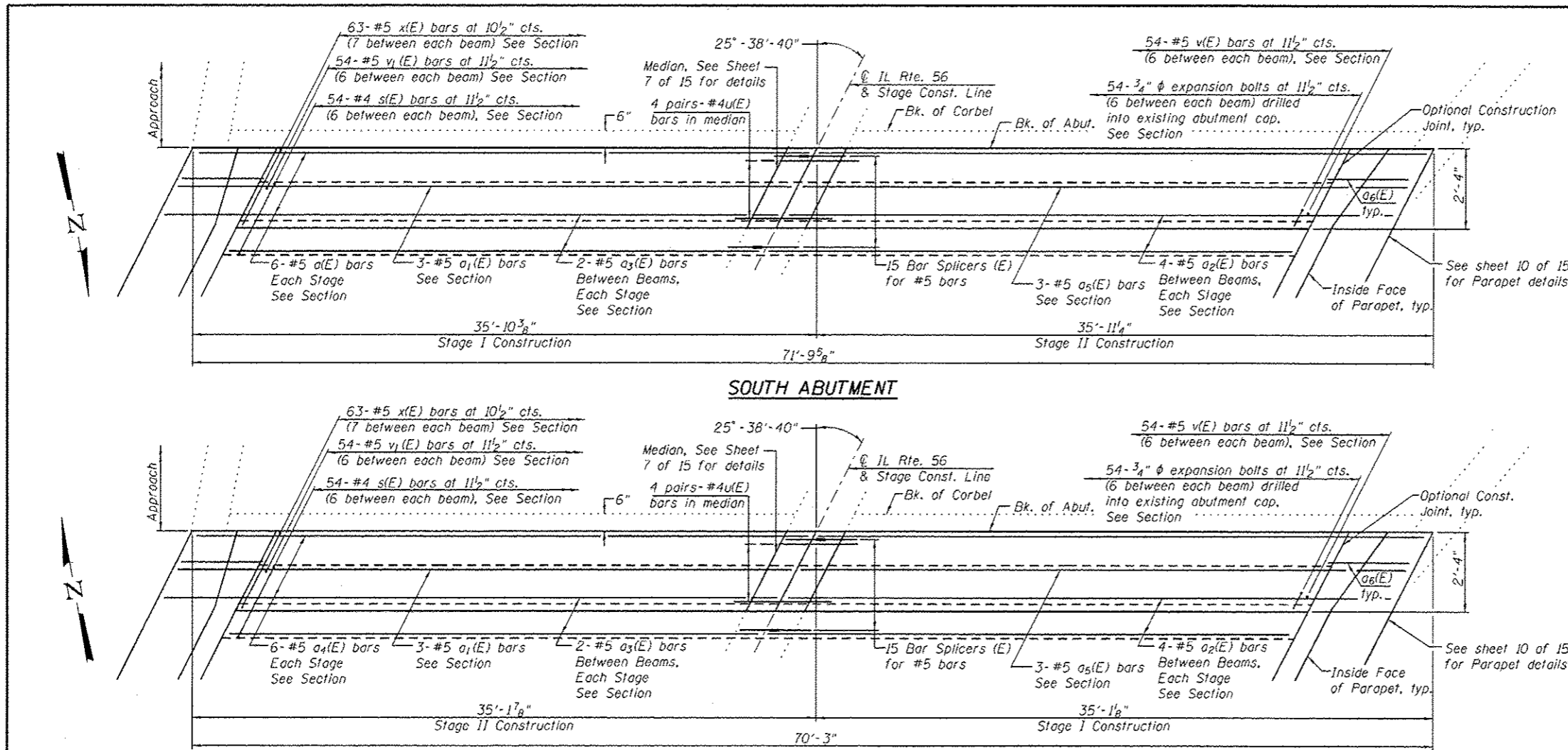


USER NAME -	DESIGNED - PSS	REVISED - 5/21/2013 AJP
FILE NAME -	CHECKED - TRP	REVISED -
PLUT SCALE -	DRAWN - AJP	REVISED -
PLUT DATE -	CHECKED - MTH	REVISED -

STATE OF ILLINOIS
DEPARTMENT OF TRANSPORTATION

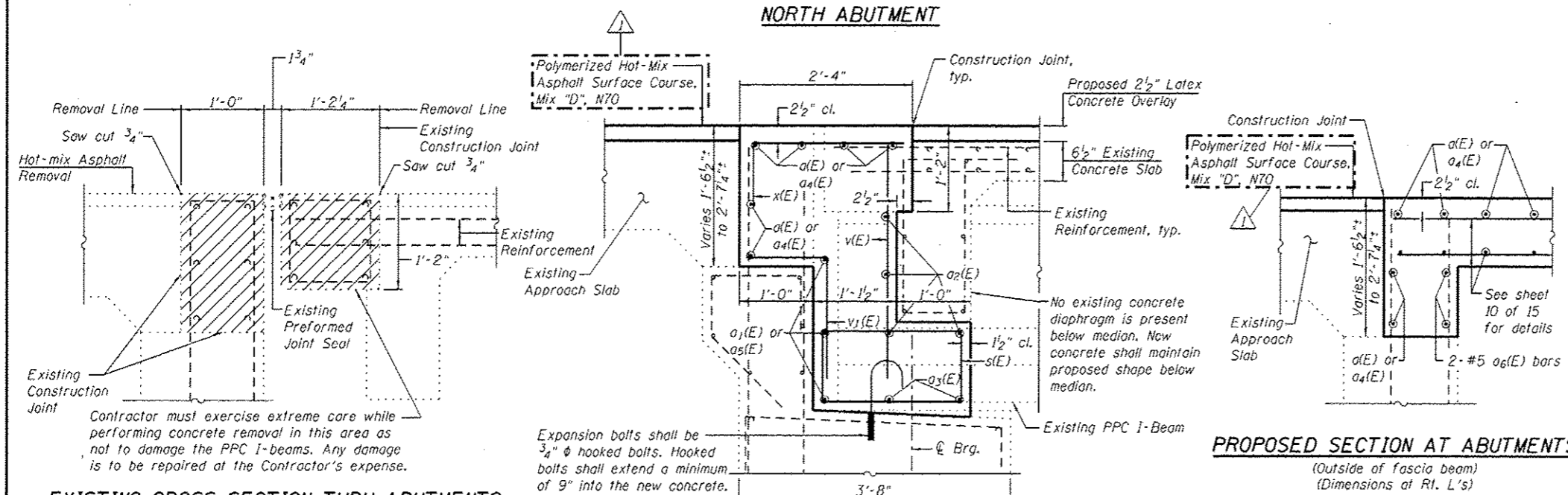
DECK SLAB REPAIR
STRUCTURE NO. 022-0114

F.A.P. BIL. 347	SECTION JR-HB-1-1	COUNTY DU PAGE	TOTAL SHEETS 30	SHEET NO. 17
CONTRACT NO. 60N77				ILLINOIS FEDERAL AID PROJECT



BILL OF MATERIAL
(Two Abutments)

Bar	No.	Size	Length	Shape
a(E)	12	#5	35'-2"	—
a1(E)	6	#5	33'-10"	—
a2(E)	72	#5	6'-1"	—
a3(E)	36	#5	5'-0"	—
a4(E)	12	#5	34'-5"	—
a5(E)	6	#5	31'-5"	—
a6(E)	8	#5	3'-11"	—
s(E)	108	#4	6'-9"	□
u(E)	16	#4	4'-9"	~
v(E)	108	#5	3'-2"	—
v1(E)	108	#5	2'-9"	└
x(E)	126	#5	3'-1"	~
Reinforcement Bars, Epoxy Coated			Pound	3570
Concrete Superstructure			Cu. Yd.	38.0
Expansion Bolts, 3/4"			Each	108



- Notes:
- Hatched area indicates concrete removal. Perimeter of concrete removal areas shall be saw cut 3/4" prior to removal of the concrete.
 - Existing reinforcement bars in the concrete removal area extending into new construction shall be cleaned and incorporated into the new construction unless otherwise noted. Cost included with Concrete Removal.
 - Any reinforcement bars that are damaged during concrete removal operations shall be repaired or replaced using an approved bar splicer or anchorage system, in accordance with IDOT Standard Specifications Article 501.03. Cost included in "Concrete Removal"
 - Overlay removal is included in pay item Bridge Deck Scarification, 2 1/2".
 - Removal of the existing joint system is included with Concrete Removal.
 - See sheet 7 of 15 for details of u(E) bar.