

**GENERAL NOTES**

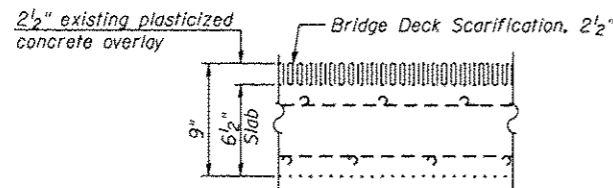
Reinforcement bars designated (E) shall be epoxy coated.  
 Plan dimensions and details relative to existing plans are subject to nominal construction variations. The Contractor shall field verify existing dimensions and details affecting new construction and make necessary approved adjustments prior to construction or ordering of materials. Such variations shall not be cause for additional compensation for a change in scope of the work, however, the Contractor will be paid for the quantity actually furnished at the unit price bid for the work.

Joint openings shall be adjusted according to Article 520.04 of the Std. Specs. when the concrete is poured at an ambient temperature other than 50° F.

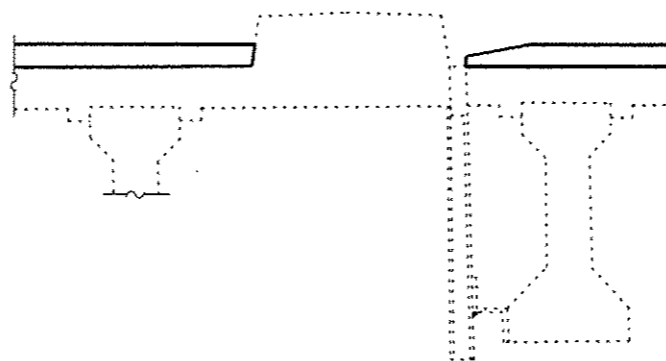
The existing bearing plate coating contains lead. The Contractor shall take appropriate precautions to deal with the presence of lead on this project.

All structural steel shall conform to AASHTO Classification M270 Gr. 36 unless otherwise noted.

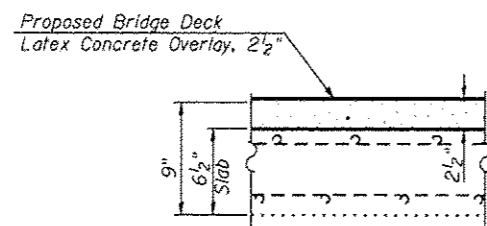
Existing bridge underdeck lighting is present at this location. All existing locations shall be protected and maintained in accordance with the special provision for "PROTECT AND MAINTAIN EXISTING UNDERPASS LUMINAIRE" and as determined by the Engineer.



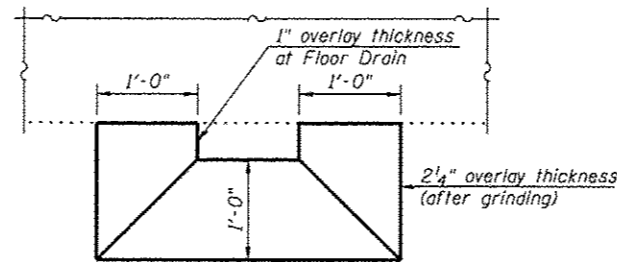
**EXISTING BRIDGE DECK CROSS SECTION**



**DRAIN DETAILS**  
 (Except at Floor Drains Being Plugged)



**PROPOSED BRIDGE DECK CROSS SECTION**



**OVERLAY AT DRAIN**

**TOTAL BILL OF MATERIAL**

| ITEM  | UNIT    | SUPER | SUB | TOTAL |
|---|---------|-------|-----|-------|
| Furnished Excavation  | Cu. Yd. | -     | 15  | 15    |
| Bituminous Materials (Prime Coat)                                 | Gallon  | 71    | -   | 71    |
| Polymerized Hot-Mix Asphalt Surface Course, Mix "F", N90          | Tons    | 49    | -   | 49    |
| Concrete Removal  | Cu. Yd. | 104.0 | -   | 104.0 |
| Slope Wall Removal  | Sq. Yd. | -     | 51  | 51    |
| Protective Shield   | Sq. Yd. | 379   | -   | 379   |
| Concrete Superstructure   | Cu. Yd. | 138.8 | -   | 138.8 |
| Bridge Deck Grooving  | Sq. Yd. | 1159  | -   | 1159  |
| Protective Coat   | Sq. Yd. | 243   | -   | 243   |
| Reinforcement Bars, Epoxy Coated                                  | Pound   | 20360 | -   | 20360 |
| Bar Splicers  | Each    | 78    | -   | 78    |
| Slope Wall, 4 Inch  | Sq. Yd. | -     | 51  | 51    |
| Preformed Joint Strip Seal  | Foot    | 143   | -   | 143   |
| Anchor Bolts, 1"  | Each    | 80    | -   | 80    |
| Floor Drains to be Cleaned  | Each    | 8     | -   | 8     |
| Clean & Reseal Relief Joint                                       | Foot    | 52    | -   | 52    |
| Hot-Mix Asphalt Surface Removal, Variable Depth                   | Sq. Yd. | 707   | -   | 707   |
| Elastomeric Bearing Assembly, Type II (Special)                   | Each    | 40    | -   | 40    |
| Approach Slab Removal & Replacement                               | Sq. Yd. | 30    | -   | 30    |
| Jack and Remove Existing Bearings                                 | Each    | 40    | -   | 40    |
| Bridge Deck Latex Concrete Overlay, 2 1/2"                        | Sq. Yd. | 1155  | -   | 1155  |
| Bridge Deck Scarification, 2 1/2"                                 | Sq. Yd. | 1155  | -   | 1155  |
| Structural Repair of Concrete (Depth Equal to or Less Than 5 in.) | Sq. Ft. | -     | 259 | 259   |
| Plug Existing Deck Drains   | Each    | 16    | -   | 16    |
| Deck Slab Repair (Full Depth, Type II)                            | Sq. Yd. | 3     | -   | 3     |
| Temporary Shoring and Cribbing                                    | Each    | -     | 3   | 3     |
| Expansion Bolts, 3/4"   | Each    | 342   | -   | 342   |