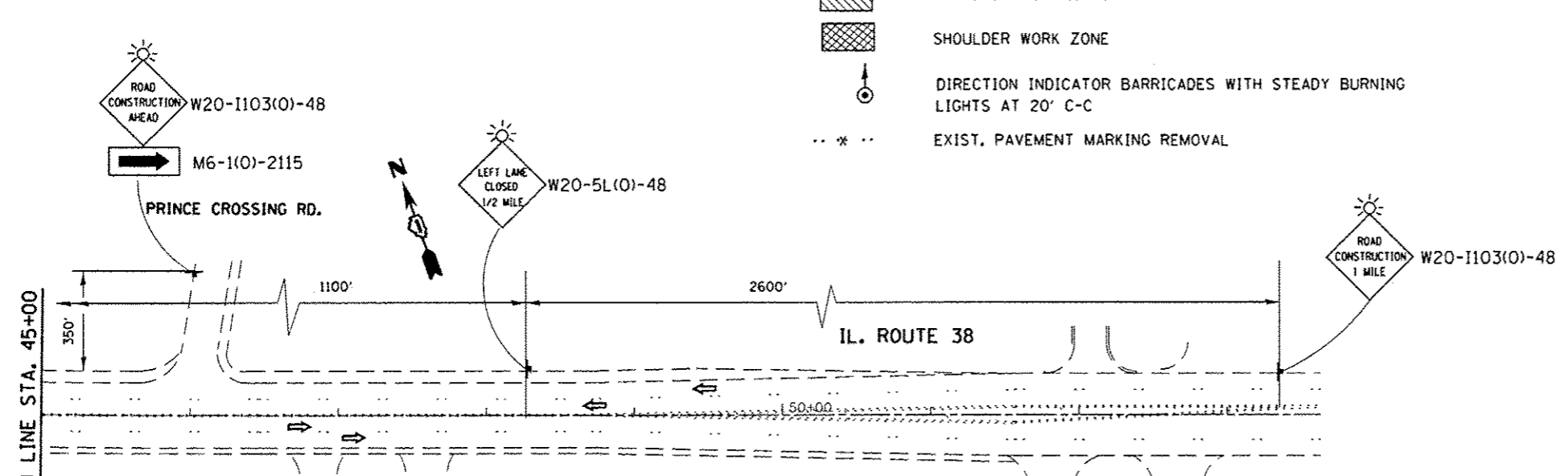
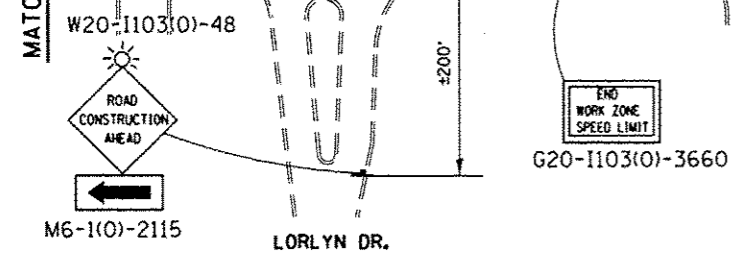
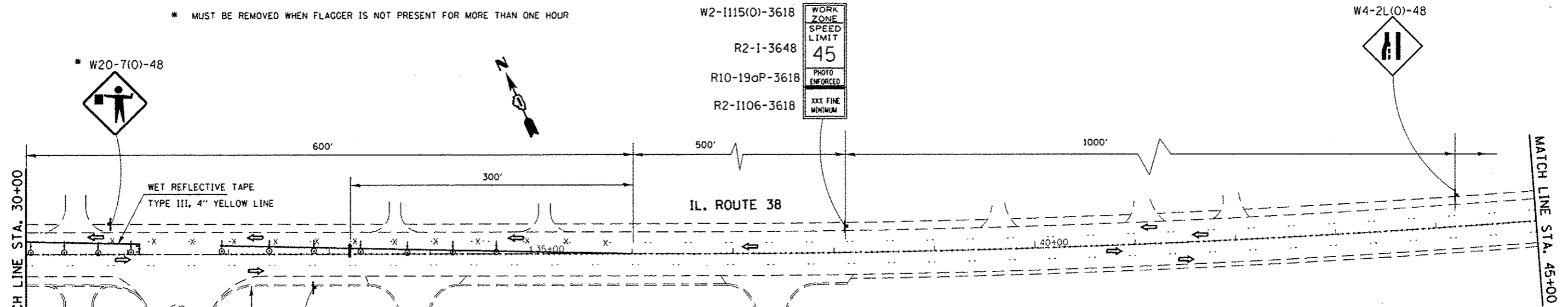


* MUST BE REMOVED WHEN FLAGGER IS NOT PRESENT FOR MORE THAN ONE HOUR



LEGEND:

- TEMPORARY RAISED REFL. PVT. MARKERS, YELLOW
- TYPE III BARRICADE WITH FLASHING MONODIRECTIONAL LIGHT
- BRIDGE WORK ZONE
- APPROACH WORK ZONE
- SHOULDER WORK ZONE
- DIRECTION INDICATOR BARRICADES WITH STEADY BURNING LIGHTS AT 20' C-C
- EXIST. PAVEMENT MARKING REMOVAL

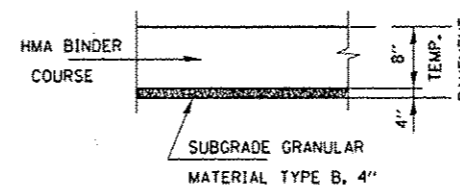
- CONCRETE REMOVAL
- TEMPORARY PAVEMENT
- DRUM WITH STEADY BURNING LIGHT, 20' CTS IN TAPER, 25' IN WEAVE, 50' IN TANGENT
- DIRECTION OF TRAFFIC
- FLASHING ARROW BOARD

HMA MIXTURE REQUIREMENTS	
MIXTURE TYPE	AIR VOIDS & Ndes
APPROACH SLAB	
HOT-MIX ASPHLT SURFACE COURSE, MIX D, N70. (IL 9.5mm)	4% @ 70 GYR
HOT-MIX ASPHALT SHOULDERS	
HOT-MIX ASPHLT SURFACE COURSE, MIX D, N70. (IL 9.5mm)	4% @ 70 GYR
LEVELING BINDER (M M), N70 (IL 9.5 mm)	4% @ 70 GYR
TEMPORARY PAVEMENT	
HOT-MIX ASPHLT BINDER COURSE; IL 19.0, N50; 8"	4% @ 50 GYR

NOTES:

- 1 EXISTING CONFLICTING PAVEMENT MARKINGS SHALL BE REMOVED.
- 2 ALL SIGNS SHALL BE POST MOUNTED IF THE CLOSURE TIME EXCEEDS FOUR HOURS.
- 3 CONTINUOUS REFLECTIVE TEMPORARY PAVEMENT MARKING TAPE SHALL BE PLACED THROUGHOUT THE TAPER AND FOR 250' ALONG SIDE THE WORK AREA WHERE THE CLOSURE TIME IS GREATER THAN FOURTEEN DAYS. THE LEFT EDGE LINE SHALL BE YELLOW AND THE RIGHT EDGE LINE SHALL BE WHITE.

TEMPORARY PAVEMENT DETAIL



THE UNIT WEIGHT USED TO CALCULATE ALL HMA SURFACE MIXTURE QUANTITIES IS 112 LBS/SQ. YD./IN.

THE "AC" TYPE FOR POLYMERIZED HMA MIXES SHALL BE "SBS / SBR PG 76-22" AND FOR NON-POLYMERIZED HMA THE "AC TYPE" SHALL BE "PG 64 -22" UNLESS MODIFIED BY DISTRICT ONE SPECIAL PROVISIONS.

FOR USE OF RECYCLED MATERIALS SEE SPECIAL PROVISIONS.

REVISD A.G. 05/22/2013

FILE NAME :	USER NAME : gorenautab	DESIGNED -	REVISED -	STATE OF ILLINOIS DEPARTMENT OF TRANSPORTATION	IL 38 (ROOSEVELT RD) AT WEST BRANCH DUPAGE RIVER TRAFFIC CONTROL PLAN, STAGE I (SN 022-0022)	F.A.P. RTE. 347	SECTION 2011-067-I	COUNTY DUPAGE	TOTAL SHEETS 29	SHEET NO. 16	
es:\pr-work\pavdot\gorenautab\0273151\162311-sht-plan.dgn	PLOT SCALE = 100.0000' / in.	DRAWN -	REVISED -			SCALE: SHEET NO. OF SHEETS STA. TO STA.		CONTRACT NO. 60P86			
PLOT DATE = 5/24/2013	DATE -	CHECKED -	REVISED -			ILLINOIS FED. AID PROJECT					