

MAX WIDTH
10'-0"
1 MILE
AHEAD

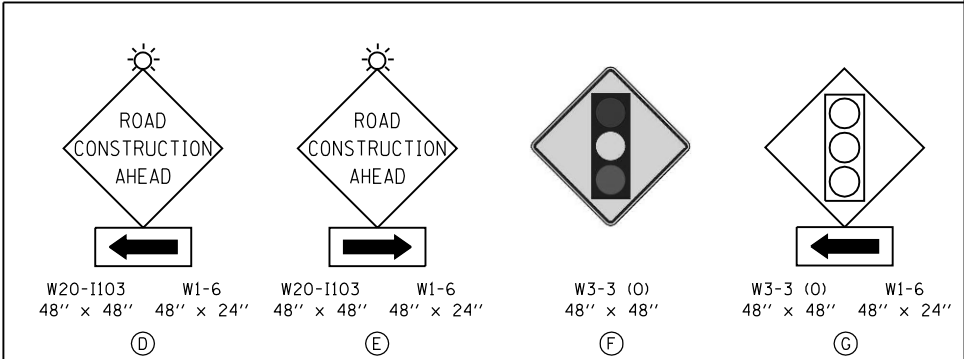
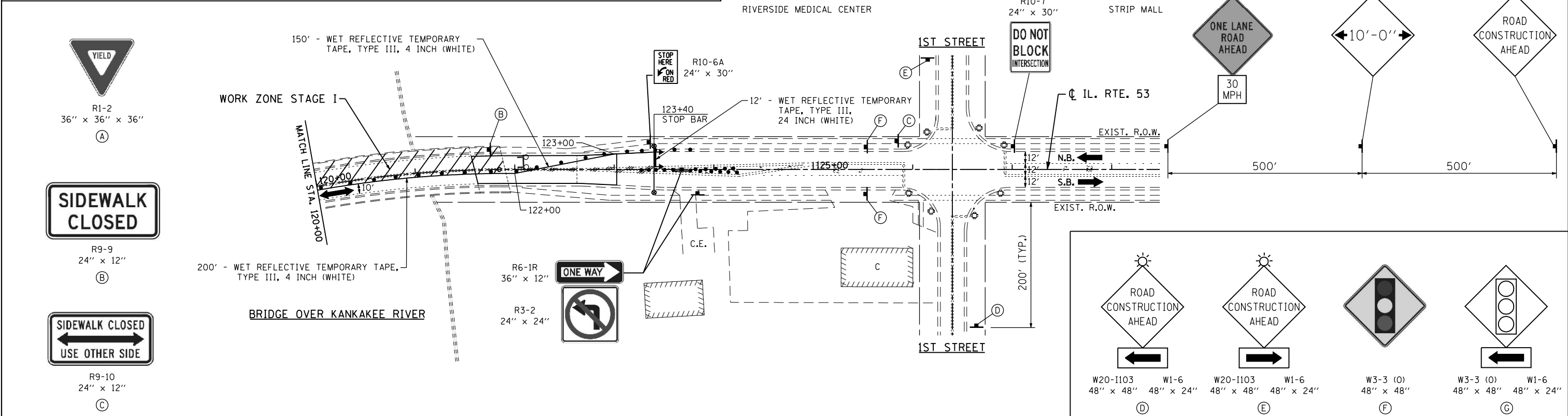
W12-1103
48" x 48"

PLACE THIS SIGN ON
NORTHBOUND IL. RTE. 53
PRIOR TO WEST RIVER ROAD

PLACE THIS SIGN ON
SOUTHBOUND IL. RTE. 53
PRIOR TO NEW RIVER ROAD

TRAFFIC CONTROL AND STAGING LEGEND

- WORK ZONE
- DIRECTION OF TRAFFIC
- TYPE III BARRICADES WITH FLASHING LIGHTS
- TRAFFIC SIGNAL W/ POLE
- TRAFFIC SIGNAL
- POLE
- BARRICADE TYPE II OR DRUMS WITH STEADY BURNING BI-DIRECTIONAL LIGHT
- SIGN ON PORTABLE OR PREEMINENT SUPPORT
- PAVEMENT MARKING REMOVAL
- TEMPORARY RUMBLE STRIPS



FILE NAME = D160R63-sht-staging2.dgn
PLOT DATE = 1/7/2013
PLOT SCALE = 100.0000' / IN.

CHRISTIAN-ROGE & ASSOCIATES, INC.
ENGINEERS-PLANNERS-SURVEYORS
211 WEST WACKER DRIVE
CHICAGO, ILLINOIS 60606
PHONE: (312)372-2023 FAX: (312)372-8274

DESIGNED - S.J.P.
DRAWN - A.C.S.
CHECKED - M.P.
DATE - OCTOBER 9, 2012

REVISED -
REVISED -
REVISED -
REVISED -

**STATE OF ILLINOIS
DEPARTMENT OF TRANSPORTATION**

**SUGGESTED TRAFFIC CONTROL AND PROTECTION - STAGE I
IL. RTE. 53 OVER KANKAKEE RIVER**

SCALE: NONE SHEET NO. 1 OF 2 SHEETS STA. 114+15 TO STA. 123+02

F.A.P. RTE.	SECTION	COUNTY	TOTAL SHEETS	SHEET NO.
846	K-29-A-BR-1	WILL	55	9
CONTRACT NO. 60R63				
FED. ROAD DIST. NO. 1 ILLINOIS FED. AID PROJECT				