

STATE OF ILLINOIS  
DEPARTMENT OF TRANSPORTATION  
DIVISION OF HIGHWAYS

**PROPOSED  
HIGHWAY PLANS**

FAU 1360 (US 41 / FOSTER AVE.)  
IL 43 (HARLEM AVE.) TO ASHLAND AVE.  
SECTION 2012-009RS  
RESURFACING (3P)  
COOK COUNTY  
C-91-368-12

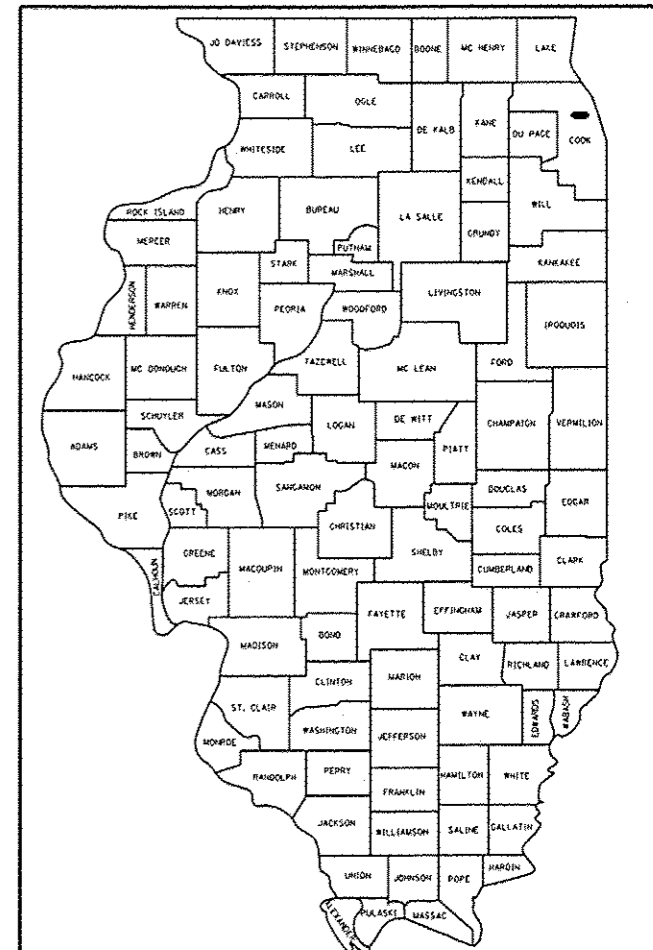
F.A.U. RTE. 1360	SECTION 2012-009RS	COUNTY COOK	TOTAL SHEETS 73	SHEET NO. 1
ILLINOIS			CONTRACT NO. 60T51	

\*33 & 2 = 35

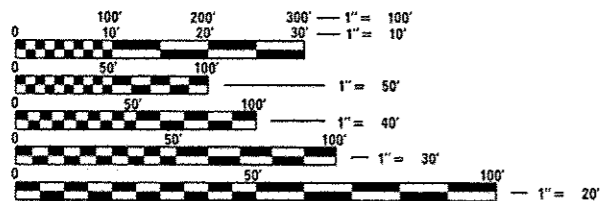
D-91-368-12

FOR INDEX OF SHEETS, SEE SHEET NO. 2

THIS IMPROVEMENT IS LOCATED  
IN THE CITY OF CHICAGO



LOCATION OF SECTION INDICATED THUS: - [black rectangle] -

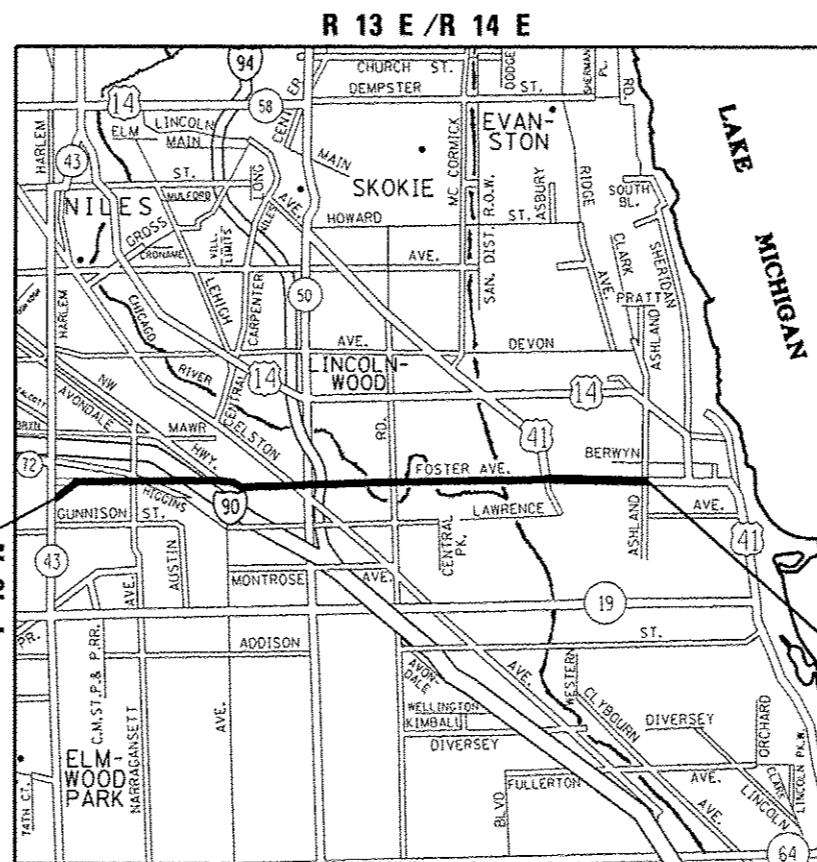


FULL SIZE PLANS HAVE BEEN PREPARED USING STANDARD ENGINEERING SCALES. REDUCED SIZED PLANS WILL NOT CONFORM TO STANDARD SCALES. IN MAKING MEASUREMENTS ON REDUCED PLANS, THE ABOVE SCALES MAY BE USED.

C.U.A.N.  
CHICAGO UTILITY ALERT NETWORK  
(312) 744-7000

PROJECT ENGINEER: KARI SMITH (847) 705-4437  
PROJECT MANAGER: KEN ENG (847) 705 4247

CONTRACT NO. 60T51



PROJECT BEGINS:  
STATION 6+57

PROJECT ENDS:  
STATION 381+60

OMISSIONS

99 + 80	-	103 + 73
168 + 91	-	170 + 33
214 + 31	-	215 + 99
223 + 72	-	224 + 72
232 + 43	-	233 + 49
244 + 98	-	255 + 96
284 + 78	-	285 + 82
319 + 68	-	327 + 73
364 + 46	-	370 + 22

TRAFFIC DATA

2010 ADT = 33,500  
POSTED SPEED LIMIT = 25 - 30 MPH

STATE OF ILLINOIS  
DEPARTMENT OF TRANSPORTATION  
DIVISION OF HIGHWAYS

SUBMITTED *April 10 2013*  
*John P. [Signature]*  
DEPUTY DIRECTOR OF HIGHWAYS, REGION ENGINEER  
*May 10 2013*  
*John D. Baranzelli, P.E.*  
ENGINEER OF DESIGN AND ENVIRONMENT  
*May 10 2013*  
*Orker Osman, P.E.*  
DIRECTOR OF HIGHWAYS, CHIEF ENGINEER

Rev. 6-5-13

PRINTED BY THE AUTHORITY  
OF THE STATE OF ILLINOIS

JEFFERSON & LAKEVIEW TOWNSHIPS  
GROSS LENGTH = 37,503 FT. = 7.10 MILE  
NET LENGTH = 34,011 FT. = 6.44 MILE