

STATE OF ILLINOIS
DEPARTMENT OF TRANSPORTATION
DIVISION OF HIGHWAYS

**PROPOSED
HIGHWAY PLANS**

FAU 1360 (US 41 / FOSTER AVE.)
IL 43 (HARLEM AVE.) TO ASHLAND AVE.
SECTION 2012-009RS
RESURFACING (3P)
COOK COUNTY
C-91-368-12

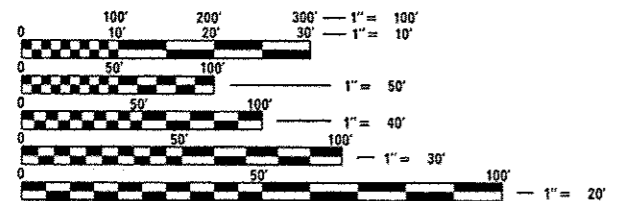
F.A.U. RTE. 1360	SECTION 2012-009RS	COUNTY COOK	TOTAL SHEETS 73	SHEET NO. 1
ILLINOIS			CONTRACT NO. 60T51	

*33 & 2 = 35

D-91-368-12

FOR INDEX OF SHEETS, SEE SHEET NO. 2

THIS IMPROVEMENT IS LOCATED
IN THE CITY OF CHICAGO

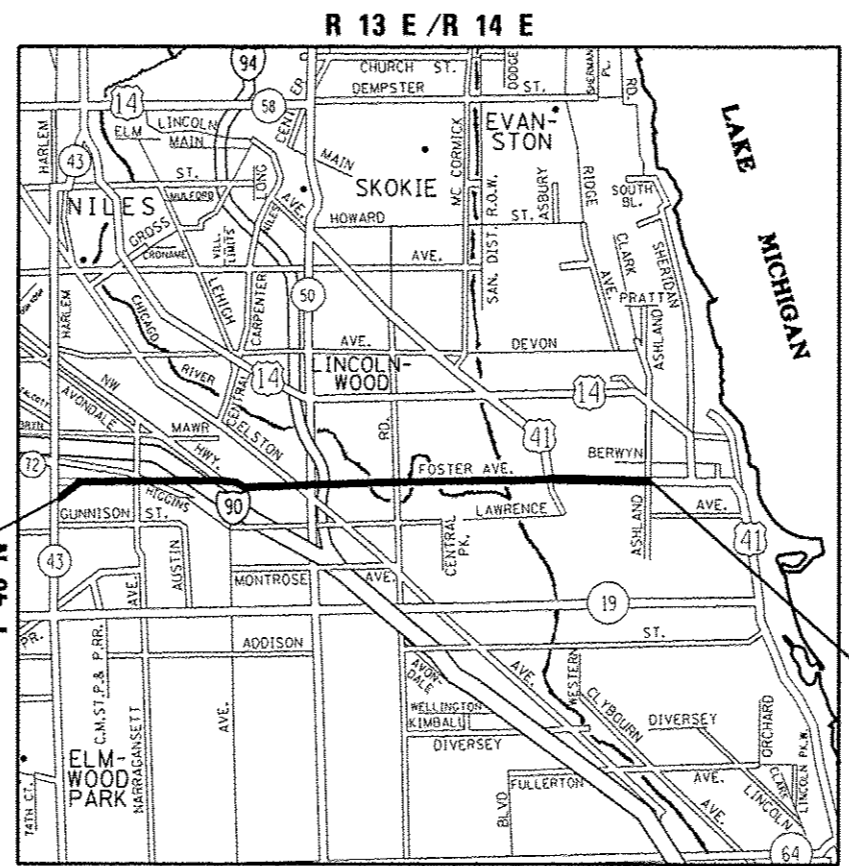


FULL SIZE PLANS HAVE BEEN PREPARED USING STANDARD ENGINEERING SCALES. REDUCED SIZED PLANS WILL NOT CONFORM TO STANDARD SCALES. IN MAKING MEASUREMENTS ON REDUCED PLANS, THE ABOVE SCALES MAY BE USED.

C.U.A.N.
CHICAGO UTILITY ALERT NETWORK
(312) 744-7000

PROJECT ENGINEER: KARI SMITH (847) 705-4437
PROJECT MANAGER: KEN ENG (847) 705 4247

CONTRACT NO. 60T51



PROJECT BEGINS:
STATION 6+57

PROJECT ENDS:
STATION 381+60

OMISSIONS

99 + 80	-	103 + 73
168 + 91	-	170 + 33
214 + 31	-	215 + 99
223 + 72	-	224 + 72
232 + 43	-	233 + 49
244 + 98	-	255 + 96
284 + 78	-	285 + 82
319 + 68	-	327 + 73
364 + 46	-	370 + 22

TRAFFIC DATA
2010 ADT = 33,500
POSTED SPEED LIMIT = 25 - 30 MPH

STATE OF ILLINOIS
DEPARTMENT OF TRANSPORTATION
DIVISION OF HIGHWAYS

SUBMITTED April 10 2013
John P. [Signature]
DEPUTY DIRECTOR OF HIGHWAYS, REGION ENGINEER

May 10 2013
John D. Baranzelli, P.E.
ENGINEER OF DESIGN AND ENVIRONMENT

May 10 2013
Orker Osman, P.E.
DIRECTOR OF HIGHWAYS, CHIEF ENGINEER

Rev. 6-5-13

PRINTED BY THE AUTHORITY
OF THE STATE OF ILLINOIS

JEFFERSON & LAKEVIEW TOWNSHIPS
GROSS LENGTH = 37,503 FT. = 7.10 MILE
NET LENGTH = 34,011 FT. = 6.44 MILE

INDEX OF SHEETS

SHEET NO. DESCRIPTION

1	COVER SHEET
2	INDEX OF SHEETS, STANDARDS, AND GENERAL NOTES
3-5	SUMMARY OF QUANTITIES
6-8	TYPICAL SECTIONS PLAN
9-22	ROADWAY & PAVEMENT MARKINGS PLANS
23	DETAILS FOR FRAMES AND LIDS ADJUSTMENT WITH MILLING (BD-8)
24	PAVEMENT PATCHING FOR HMA SURFACED PAVEMENT (BD-22)
25	CURB OR CURB AND GUTTER REMOVAL AND REPLACEMENT (BD-24)
26	BUTT JOINT AND HMA TAPER DETAILS (BD-32)
27	TRAFFIC CONTROL AND PROTECTION FOR SIDE ROADS, INTERSECTIONS, AND DRIVEWAYS (TC-10)
28	TRAFFIC CONTROL AND PROTECTION AT TURN BAYS (TO REMAIN OPEN TO TRAFFIC) TC-14)
29	PAVEMENT MARKING LETTERS AND SYMBOLS FOR TRAFFIC STAGING (TC-16)
30	ARTERIAL ROAD INFORMATION SIGN (TC-22)
31-33	CITY OF CHICAGO TYPICAL PAVEMENT MARKINGS (TC-24)
33A	FREEWAY ENTRANCE AND EXIT RAMP CLOSURE DETAILS (TC-08)
33B	TRAFFIC CONTROL DETAILS FOR FREEWAY SHOULDER CLOSURES AND PARTIAL RAMP CLOSURES (TC-17)



LIST OF STATE STANDARDS

<u>STANDARD NO.</u>	<u>DESCRIPTION</u>
000001-04	STANDARD SYMBOLS, ABBREVIATIONS AND PATTERNS
442201-03	CLASS C AND D PATCHES
604001-03	FRAME AND LIDS, TYPE 1
606001-04	COMBINATION CONCRETE CURB AND GUTTER
701101-03	OFF-ROAD OPERATIONS, MULTILANE, 15' TO 24' FROM PAVEMENT EDGE
701301-04	LANE CLOSURE, 2L, 2W, SHORT TIME OPERATIONS
701311-03	LANE CLOSURE, 2L, 2W MOVING OPERATIONS - DAY ONLY
701427-01	LANE CLOSURE, INTERMITTENT OR MOVING OPERATION FOR SPEEDS <= 40 MPH
701501-06	URBAN LANE CLOSURE, 2L, 2W UNDIVIDED
701606-08	URBAN LANE CLOSURE, MULTILANE 2W WITH MOUNTABLE MEDIAN
701701-08	URBAN LANE CLOSURE, MULTILANE INTERSECTION
701801-05	LANE CLOSURE MULTILANE, 1W OR 2W CROSSWALK OR SIDEWALK CLOSURE
701901-02	TRAFFIC CONTROL DEVICES

CHICAGO NOTES

BEFORE STARTING ANY EXCAVATION, THE CONTRACTOR SHALL CALL "C.U.A.N." (CHICAGO UTILITY ALERT NETWORK) AT 312-744-7000 FOR FIELD LOCATIONS OF BURIED ELECTRIC, TELEPHONE AND GAS FACILITIES. (48 HOUR NOTIFICATION IS REQUIRED).

THE CONTRACTOR SHALL COORDINATE CONSTRUCTION ACTIVITIES WITH UTILITY COMPANIES AND THE CITY OF CHICAGO.

ALL CATCH BASINS IN THE CITY OF CHICAGO MUST MEET THE DEPARTMENT OF SEWERS' STANDARDS.

PERMITS FROM THE DEPARTMENT OF SEWERS ARE REQUIRED FOR ALL UNDERGROUND STORM, SANITARY OR COMBINED SEWER SYSTEM CONSTRUCTION, AND FOR RESURFACING WORK INVOLVING ADJUSTMENT OF SEWER STRUCTURES. THE DEPARTMENT OF SEWERS, PERMIT MUST BE OBTAINED BY A LICENSED SEWER DRAIN LAYER PRIOR TO START OF CONSTRUCTION.

PERFORATED LIDS SHALL BE PLACED ON ALL MANHOLES AND CATCH BASINS.

ALL BROKEN, CRACKED, WORN OR OTHERWISE DAMAGED OR BICYCLE UNSAFE FRAMES AND LIDS ON SEWER STRUCTURES, SHALL BE REPLACED WITH NEW DEPARTMENT OF SEWERS' STANDARDS FRAMES AND LIDS.

OPEN LID DRAINAGE STRUCTURES SHALL NOT BE CLOSED, COVERED OR OTHERWISE OBSTRUCTED DURING CONSTRUCTION OF THIS ROADWAY WITHOUT THE WRITTEN PERMISSION FROM THE CITY OF CHICAGO.

CITY OF CHICAGO CASTINGS ARE THE PROPERTY OF THE CITY OF CHICAGO AND THE CONTRACTOR SHALL NOTIFY THE CITY FOR REMOVAL AND DISPOSITION OF THE CASTINGS.

GENERAL NOTES

THE CONTRACTOR SHALL COORDINATE CONSTRUCTION ACTIVITIES WITH UTILITY COMPANIES AND THE CITY OF CHICAGO

THE CONTRACTOR WILL NOT BE ALLOWED TO SET UP A YARD OR FIELD OFFICE ON STATE PROPERTY WITHOUT WRITTEN PERMISSION FROM THE DEPARTMENT

WHEN MILLED PAVEMENT IS OPEN TO TRAFFIC THE MAXIMUM GRADE DIFFERENTIAL BETWEEN PASSES OF THE MILLING MACHINE SHALL NOT EXCEED 1 1/2 INCHES (40 MM) WHERE THE SPEED LIMIT IS 45 MPH (45 KM/H) OR LESS AND 1 INCH WHERE THE SPEED LIMIT IS GREATER THAN 45 MPH (45 KM/H). WITH WRITTEN APPROVAL FROM THE ENGINEER, A MAXIMUM GRADE DIFFERENTIAL OF 3 INCHES MAY BE ALLOWED IF THE EDGE OF THE MILLING IS SLOPED A MINIMUM 1:3 (V:H).

BUTT JOINTS WILL BE INSTALLED AT THE ENDS OF ALL RESURFACING (WHERE RESURFACING MEETS EXISTING PAVEMENT), IN ACCORDANCE WITH THE "BUTT JOINT AND HOT-MIX ASPHALT TAPER DETAILS" SHEET INCLUDED IN THE PLANS, UNLESS OTHERWISE SPECIFIED.

THE RESIDENT ENGINEER SHALL CONTACT MR. JERNARD PERKINS AREA TRAFFIC FIELD ENGINEER AT (224) 217-8632 A MINIMUM OF 2 WEEKS PRIOR TO PLACEMENT OF PERMANENT PAVEMENT MARKINGS.

THE CONTRACTOR SHALL VERIFY ALL EXISTING PAVEMENT MARKINGS BEFORE MILLING

DO NOT SCALE PLANS FOR CONSTRUCTION DIMENSIONS

ALL PAVEMENT PATCHING LOCATIONS WILL BE DETERMINED IN THE FIELD BY THE ENGINEER.

IT SHALL BE THE CONTRACTOR'S RESPONSIBILITY TO VERIFY ALL DIMENSIONS AND CONDITIONS EXISTING IN THE FIELD PRIOR TO CONSTRUCTION AND ORDERING OF MATERIALS

THE CONTRACTOR SHALL CONTACT THE DISTRICT ONE TRAFFIC CONTROL SUPERVISOR AT (847)705-4470 A MINIMUM OF 72 HOURS IN ADVANCE OF BEGINNING WORK.

THE CONTRACTOR SHALL BE REQUIRED TO PROVIDE ACCESS TO ADJUTING PROPERTY AT ALL TIMES DURING THE CONSTRUCTION OF THIS PROJECT.

WHEN STRUCTURES ARE TO BE RECONSTRUCTED, THE LOWERING AND RAISING OF THE STRUCTURE DURING MILLING AND RESURFACING OPERATIONS WILL NOT BE PAID FOR SEPARATELY BUT WILL BE INCLUDED IN THE COST OF "MANHOLES TO BE RECONSTRUCTED" PAY ITEM

1 Revised 05/22/13 FG

FILE NAME: c:\pwworkspace\dwg\gulliaum\p\d0301460\036812\ant\sta\indgn	USER NAME: gulliaumfd	DESIGNED: -	REVISED: -	STATE OF ILLINOIS DEPARTMENT OF TRANSPORTATION	INDEX OF SHEETS, LIST OF STATE STANDARDS & GENERAL NOTES FOSTER AVE. (HARLEM AVE. TO ASHLAND AVE.)	F.A.U. RTE.:	SECTION:	COUNTY:	TOTAL SHEETS:	SHEET NO.:	
		DRAWN: -	REVISED: -			1360	2012-009P5	COOK	33	2	
		CHECKED: -	REVISED: -			CONTRACT NO. 60T51					
		DATE: -	REVISED: -			ILLINOIS FED. AID PROJECT					

SUMMARY OF QUANTITIES			100% STATE URBAN CONSTRUCTION TYPE CODE				
CODE NO	ITEM	UNIT	TOTAL QUANTITIES	ROADWAY 0005			
67100100	MOBILIZATION	L SUM	1	1			
70102620	TRAFFIC CONTROL AND PROTECTION, STANDARD 701501	L SUM	1	1			
70102625	TRAFFIC CONTROL AND PROTECTION, STANDARD 701606	L SUM	1	1			
70102635	TRAFFIC CONTROL AND PROTECTION, STANDARD 701701	L SUM	1	1			
70102640	TRAFFIC CONTROL AND PROTECTION, STANDARD 701801	L SUM	1	1			
70300100	SHORT TERM PAVEMENT MARKING	FOOT	11796	11796			
70300210	TEMPORARY PAVEMENT MARKING LETTERS AND SYMBOLS	SO FT	996	996			
70300220	TEMPORARY PAVEMENT MARKING - LINE 4"	FOOT	25,100	25,100			
70300240	TEMPORARY PAVEMENT MARKING - LINE 6"	FOOT	7500	7500			
70300250	TEMPORARY PAVEMENT MARKING - LINE 8"	FOOT	417	417			
70300260	TEMPORARY PAVEMENT MARKING - LINE 12"	FOOT	1000	1000			
70300280	TEMPORARY PAVEMENT MARKING - LINE 24"	FOOT	21,500	21,500			
70301000	WORK ZONE PAVEMENT MARKING REMOVAL	SO FT	56566	56566			

SUMMARY OF QUANTITIES			100% STATE URBAN CONSTRUCTION TYPE CODE				
CODE NO	ITEM	UNIT	TOTAL QUANTITIES	ROADWAY 0005			
78000100	THERMOPLASTIC PAVEMENT MARKING - LETTERS AND SYMBOLS	SO FT	996	996			
78000200	THERMOPLASTIC PAVEMENT MARKING - LINE 4"	FOOT	25,100	25,100			
78000400	THERMOPLASTIC PAVEMENT MARKING - LINE 6"	FOOT	7500	7500			
78000500	THERMOPLASTIC PAVEMENT MARKING - LINE 8"	FOOT	417	417			
78000600	THERMOPLASTIC PAVEMENT MARKING - LINE 12"	FOOT	1000	1000			
78000650	THERMOPLASTIC PAVEMENT MARKING - LINE 24"	FOOT	21,500	21,500			
78300200	RAISED REFLECTIVE PAVEMENT MARKER REMOVAL	EACH	773	773			
X5537800	STORM SEWERS TO BE CLEANED 12"	FOOT	1100	1100			
X6030310	FRAMES AND LIDS TO BE ADJUSTED (SPECIAL)	EACH	220	220			
Z0004562	COMBINATION CONCRETE CURB AND GUTTER REMOVAL AND REPLACEMENT	FOOT	11728	11728			
Z0018500	DRAINAGE STRUCTURES TO BE CLEANED	EACH	110	110			

*Specialty Items

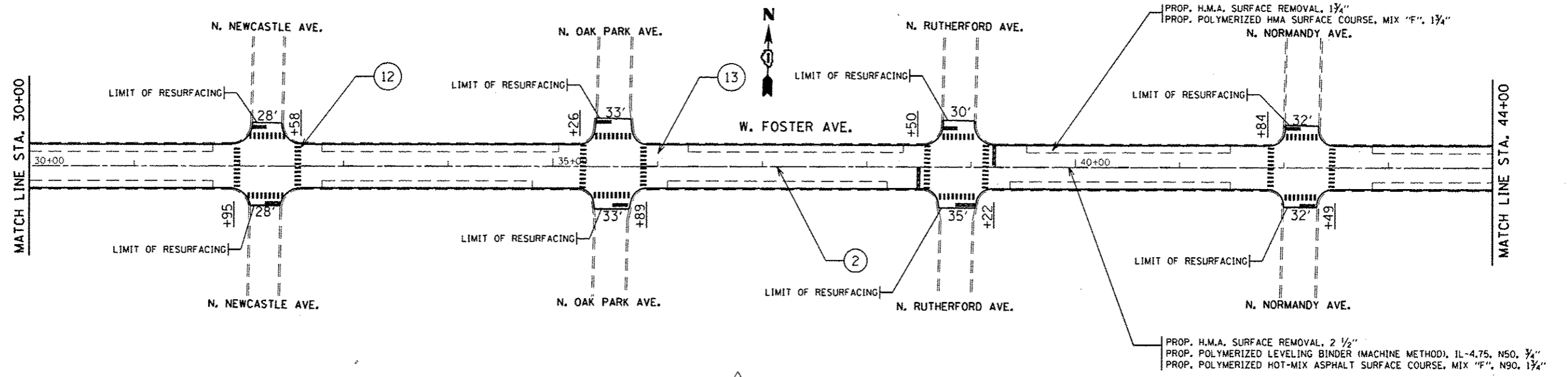
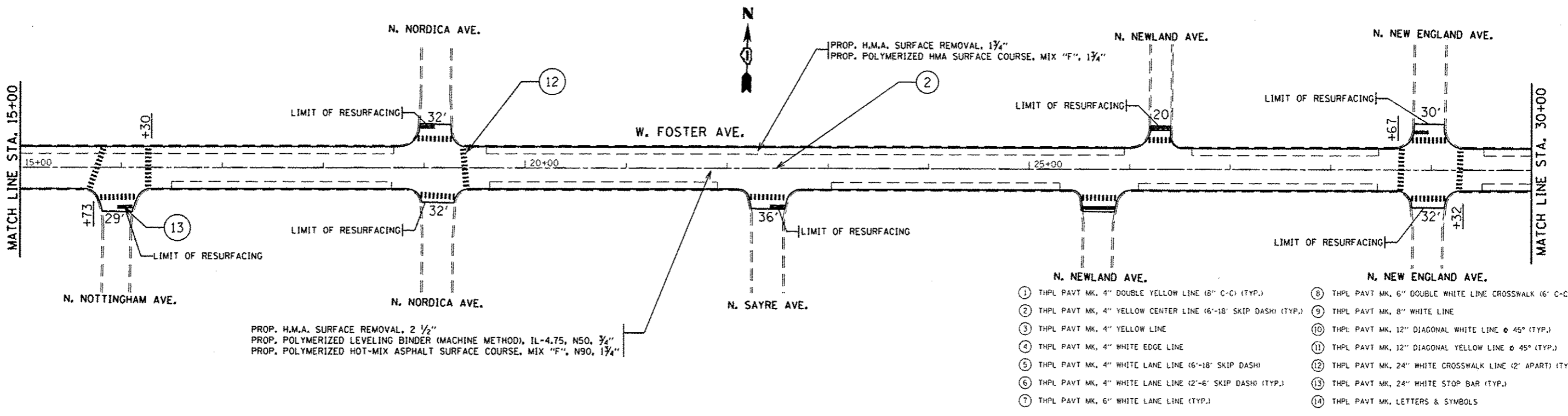
Rev. 6-5-13

FILE NAME :	USER NAME : gulliametp	DESIGNED -	REVISED -
C:\pwworking\gulliametp\00301460-D-36012-241-pkgn		DRAWN -	REVISED -
		CHECKED -	REVISED -
		DATE -	REVISED -

STATE OF ILLINOIS
DEPARTMENT OF TRANSPORTATION

SUMMARY OF QUANTITIES			
SCALE:	SHEET NO.	OF SHEETS	STA. TO STA.

F.A.U. RTE. 1360	SECTION 2012-009RS	COUNTY COOK	TOTAL SHEETS 33	SHEET NO. 4
FED. ROAD DIST. NO. 1 ILLINOIS FED. AID PROJECT			CONTRACT NO. 60T51	

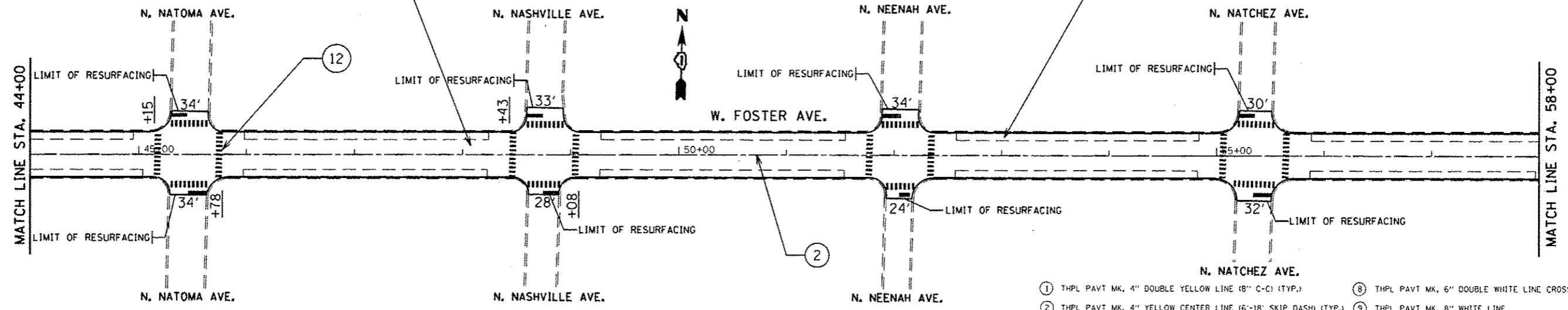


1 REVISED SHEET 5/22/13 FG

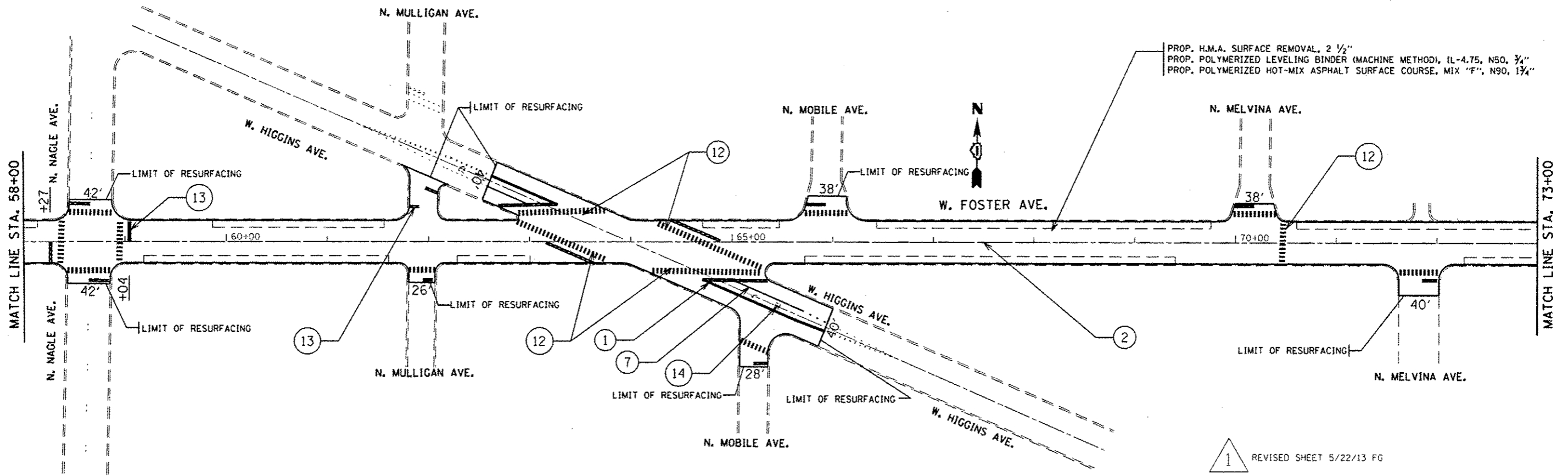
FILE NAME:	USER NAME: gulloumfp	DESIGNED -	REVISED -	STATE OF ILLINOIS DEPARTMENT OF TRANSPORTATION	FOSTER AVE HARLEM AVE TO ASHLAND AVE		F.A.U. RTE.	SECTION	COUNTY	TOTAL SHEETS	SHEET NO.	
Default	36812-shr-plan.dgn	DRAWN -	REVISED -		SCALE:	SHEET 2 OF 14 SHEETS	STA. TO STA.	1360	2012-009RS	COOK	33	10
	PLOT SCALE = 100.0000' / 1" =	CHECKED -	REVISED -									
	PLOT DATE = 5/22/2013	DATE -	REVISED -									
							CONTRACT NO. 60T51					
ILLINOIS FED. AID PROJECT												

PROP. H.M.A. SURFACE REMOVAL, 2 1/2"
 PROP. POLYMERIZED LEVELING BINDER (MACHINE METHOD), IL-4.75, N50, 3/4"
 PROP. POLYMERIZED HOT-MIX ASPHALT SURFACE COURSE, MIX "F", N90, 1 3/4"

PROP. H.M.A. SURFACE REMOVAL, 1 3/4"
 PROP. POLYMERIZED HMA SURFACE COURSE, MIX "F", 1 3/4"

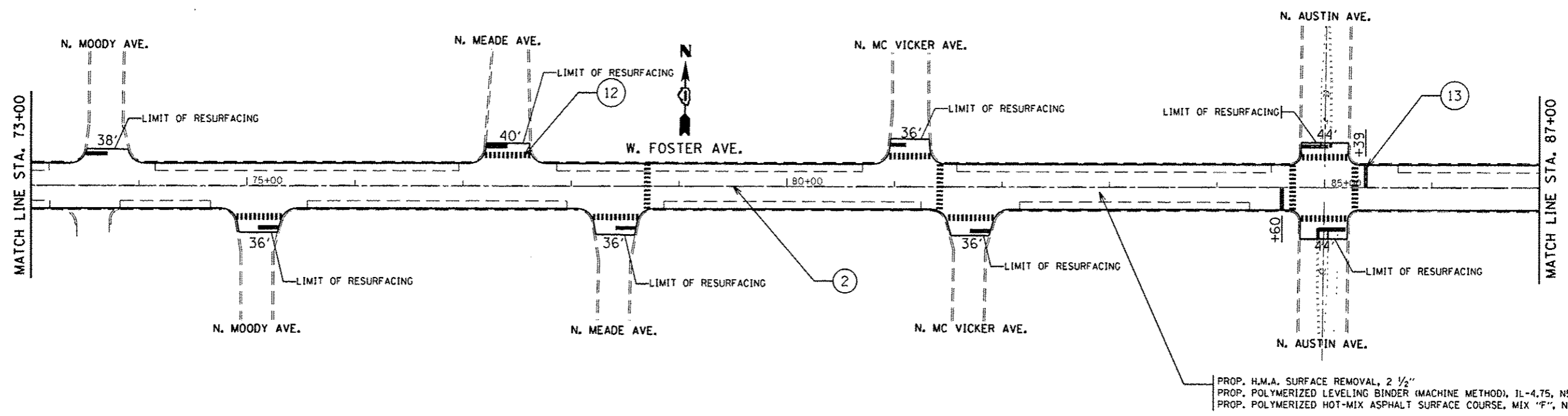


- ① THPL PAVT MK, 4" DOUBLE YELLOW LINE (8' C-C) (TYP.)
- ② THPL PAVT MK, 4" YELLOW CENTER LINE (6'-18" SKIP DASH) (TYP.)
- ③ THPL PAVT MK, 4" YELLOW LINE
- ④ THPL PAVT MK, 4" WHITE EDGE LINE
- ⑤ THPL PAVT MK, 4" WHITE LANE LINE (6'-18" SKIP DASH)
- ⑥ THPL PAVT MK, 4" WHITE LANE LINE (2'-6" SKIP DASH) (TYP.)
- ⑦ THPL PAVT MK, 6" WHITE LANE LINE (TYP.)
- ⑧ THPL PAVT MK, 6" DOUBLE WHITE LINE CROSSWALK (6' C-C)
- ⑨ THPL PAVT MK, 8" WHITE LINE
- ⑩ THPL PAVT MK, 12" DIAGONAL WHITE LINE @ 45° (TYP.)
- ⑪ THPL PAVT MK, 12" DIAGONAL YELLOW LINE @ 45° (TYP.)
- ⑫ THPL PAVT MK, 24" WHITE CROSSWALK LINE (2' APART) (TYP.)
- ⑬ THPL PAVT MK, 24" WHITE STOP BAR (TYP.)
- ⑭ THPL PAVT MK, LETTERS & SYMBOLS

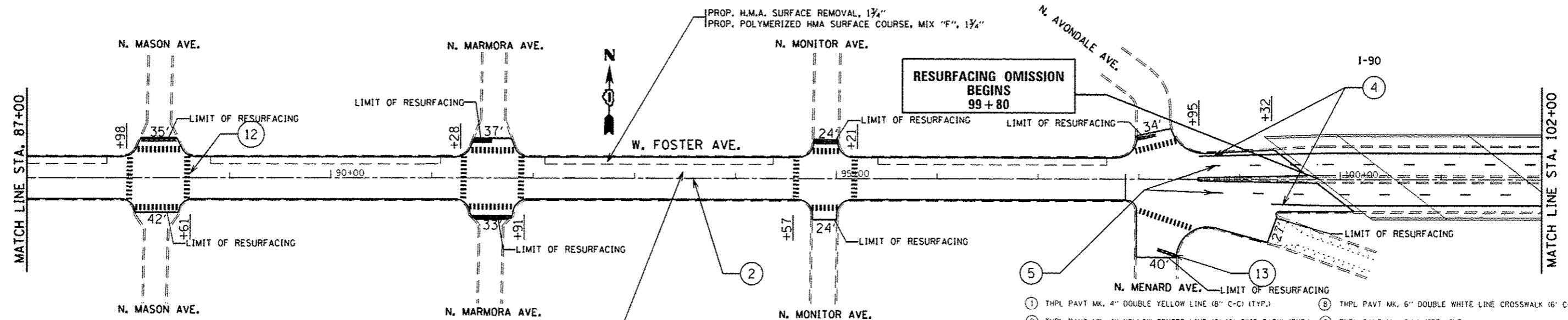


1 REVISED SHEET 5/22/13 FG

FILE NAME =	USER NAME = gullieumefp	DESIGNED -	REVISED -	STATE OF ILLINOIS DEPARTMENT OF TRANSPORTATION	FOSTER AVE HARLEM AVE TO ASHLAND AVE	F.A.U. RTE.	SECTION	COUNTY	TOTAL SHEETS	SHEET NO.	
ct:\p-work\p\dos\gullieumefp\d8301469\	36812-sht-plan.dgn	DRAWN -	REVISED -			1360	2012-009RS	COOK	33	11	
Defaults	PLOT SCALE = 100.0000' / in.	CHECKED -	REVISED -			SCALE: SHEET 3 OF 14 SHEETS STA. TO STA.					
	PLOT DATE = 5/22/2013	DATE -	REVISED -			CONTRACT NO. 60T51					
ILLINOIS FED. AID PROJECT											



PROP. H.M.A. SURFACE REMOVAL, 2 1/2"
 PROP. POLYMERIZED LEVELING BINDER (MACHINE METHOD), IL-4.75, NS0, 3/4"
 PROP. POLYMERIZED HOT-MIX ASPHALT SURFACE COURSE, MIX "F", N90, 1 3/4"

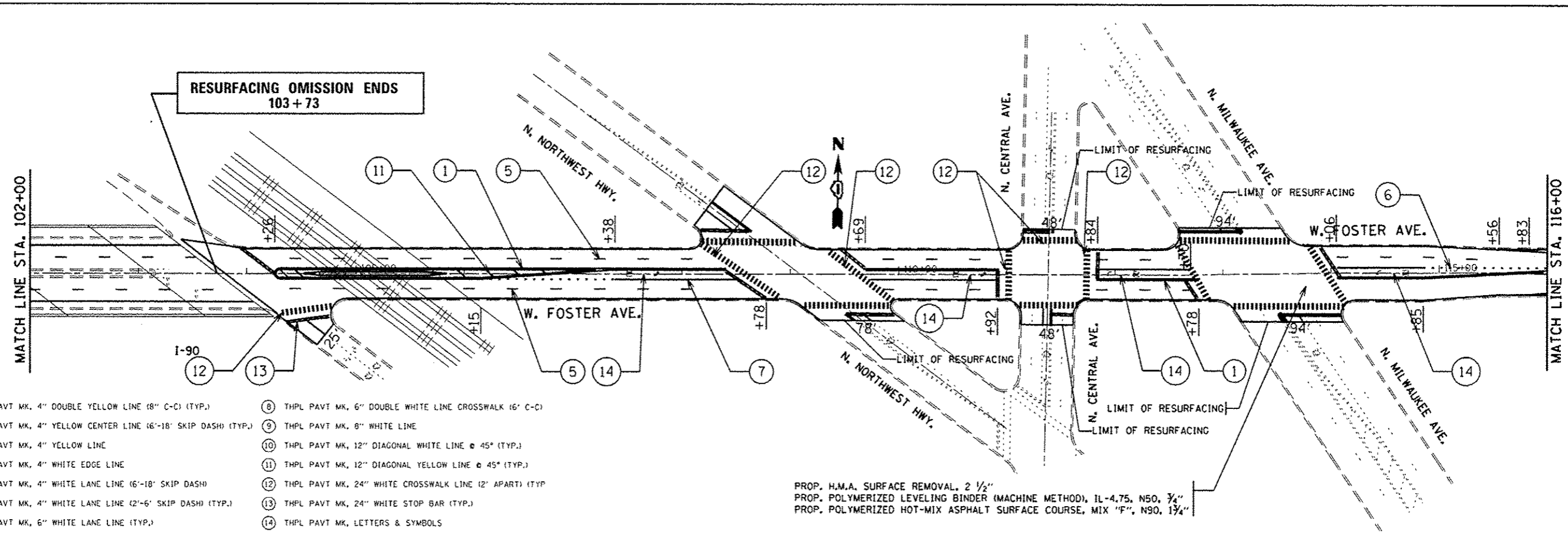


PROP. H.M.A. SURFACE REMOVAL, 2 1/2"
 PROP. POLYMERIZED LEVELING BINDER (MACHINE METHOD), IL-4.75, NS0, 3/4"
 PROP. POLYMERIZED HOT-MIX ASPHALT SURFACE COURSE, MIX "F", N90, 1 3/4"

- ① THPL PAVT MK, 4" DOUBLE YELLOW LINE (8" C-C) (TYP.)
- ② THPL PAVT MK, 4" YELLOW CENTER LINE (6'-18' SKIP DASH) (TYP.)
- ③ THPL PAVT MK, 4" YELLOW LINE
- ④ THPL PAVT MK, 4" WHITE EDGE LINE
- ⑤ THPL PAVT MK, 4" WHITE LANE LINE (6'-18" SKIP DASH)
- ⑥ THPL PAVT MK, 4" WHITE LANE LINE (2'-6" SKIP DASH) (TYP.)
- ⑦ THPL PAVT MK, 6" WHITE LANE LINE (TYP.)
- ⑧ THPL PAVT MK, 6" DOUBLE WHITE LINE CROSSWALK (6" C-C)
- ⑨ THPL PAVT MK, 8" WHITE LINE
- ⑩ THPL PAVT MK, 12" DIAGONAL WHITE LINE @ 45° (TYP.)
- ⑪ THPL PAVT MK, 12" DIAGONAL YELLOW LINE @ 45° (TYP.)
- ⑫ THPL PAVT MK, 24" WHITE CROSSWALK LINE (2' APART) (TYP.)
- ⑬ THPL PAVT MK, 24" WHITE STOP BAR (TYP.)
- ⑭ THPL PAVT MK, LETTERS & SYMBOLS

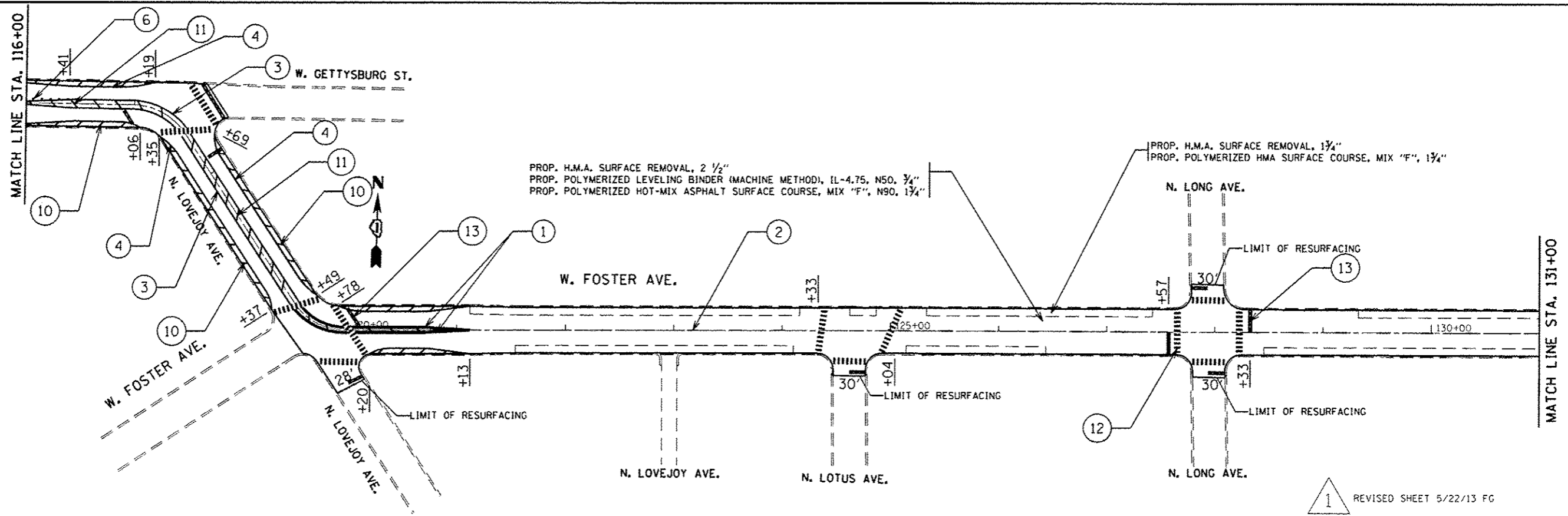
1 REVISED SHEET 5/22/13 FG

FILE NAME:	USER NAME: quilloumefp	DESIGNED -	REVISED -	STATE OF ILLINOIS DEPARTMENT OF TRANSPORTATION	FOSTER AVE HARLEM AVE TO ASHLAND AVE		F.A.U. RTE.	SECTION	COUNTY	TOTAL SHEETS	SHEET NO.	
Default	36812-shi-plan.dgn	DRAWN -	REVISED -		SCALE:	SHEET 4 OF 14 SHEETS	STA. TO STA.	1360	2012-009RS	COOK	33	12
	PLOT SCALE = 100.0000' / 1"	CHECKED -	REVISED -					CONTRACT NO. 60T51				
	PLOT DATE = 5/22/2013	DATE -	REVISED -					ILLINOIS FED. AID PROJECT				



- ① THPL PAVT MK. 4" DOUBLE YELLOW LINE (8" C-C) (TYP.)
- ② THPL PAVT MK. 4" YELLOW CENTER LINE (6'-18" SKIP DASH) (TYP.)
- ③ THPL PAVT MK. 4" YELLOW LINE
- ④ THPL PAVT MK. 4" WHITE EDGE LINE
- ⑤ THPL PAVT MK. 4" WHITE LANE LINE (6'-18" SKIP DASH)
- ⑥ THPL PAVT MK. 4" WHITE LANE LINE (2'-6" SKIP DASH) (TYP.)
- ⑦ THPL PAVT MK. 6" WHITE LANE LINE (TYP.)
- ⑧ THPL PAVT MK. 6" DOUBLE WHITE LINE CROSSWALK (6' C-C)
- ⑨ THPL PAVT MK. 8" WHITE LINE
- ⑩ THPL PAVT MK. 12" DIAGONAL WHITE LINE @ 45° (TYP.)
- ⑪ THPL PAVT MK. 12" DIAGONAL YELLOW LINE @ 45° (TYP.)
- ⑫ THPL PAVT MK. 24" WHITE CROSSWALK LINE (2' APART) (TYP.)
- ⑬ THPL PAVT MK. 24" WHITE STOP BAR (TYP.)
- ⑭ THPL PAVT MK. LETTERS & SYMBOLS

PROP. H.M.A. SURFACE REMOVAL, 2 1/2"
 PROP. POLYMERIZED LEVELING BINDER (MACHINE METHOD), IL-4.75, N50, 3/4"
 PROP. POLYMERIZED HOT-MIX ASPHALT SURFACE COURSE, MIX "F", N90, 1 3/4"

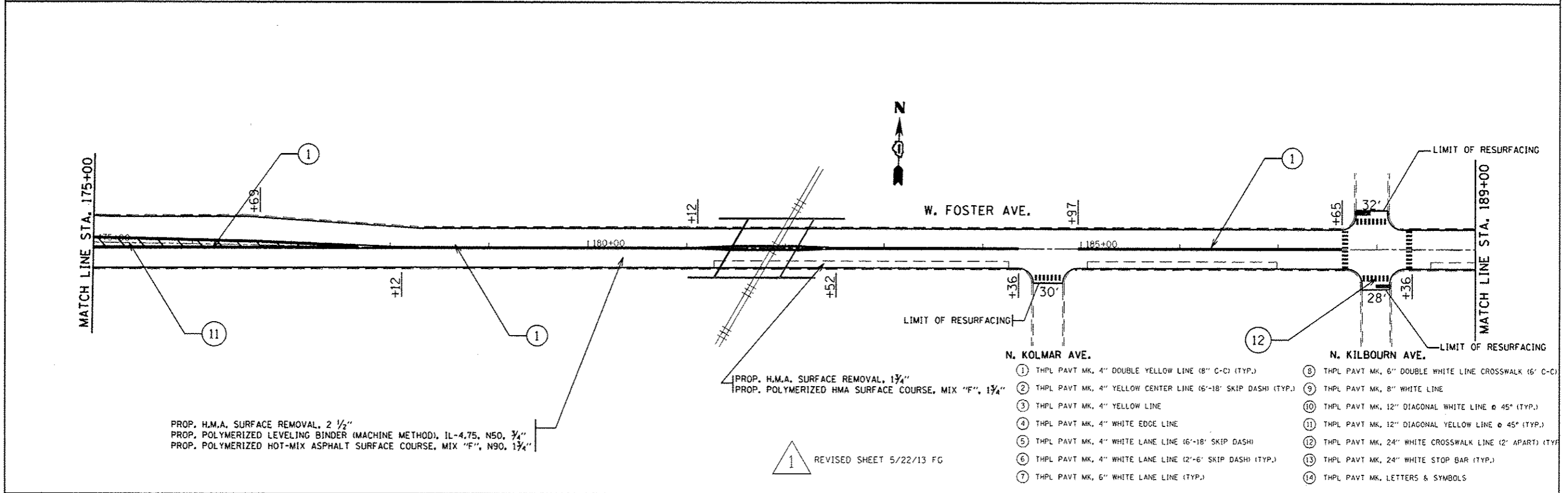
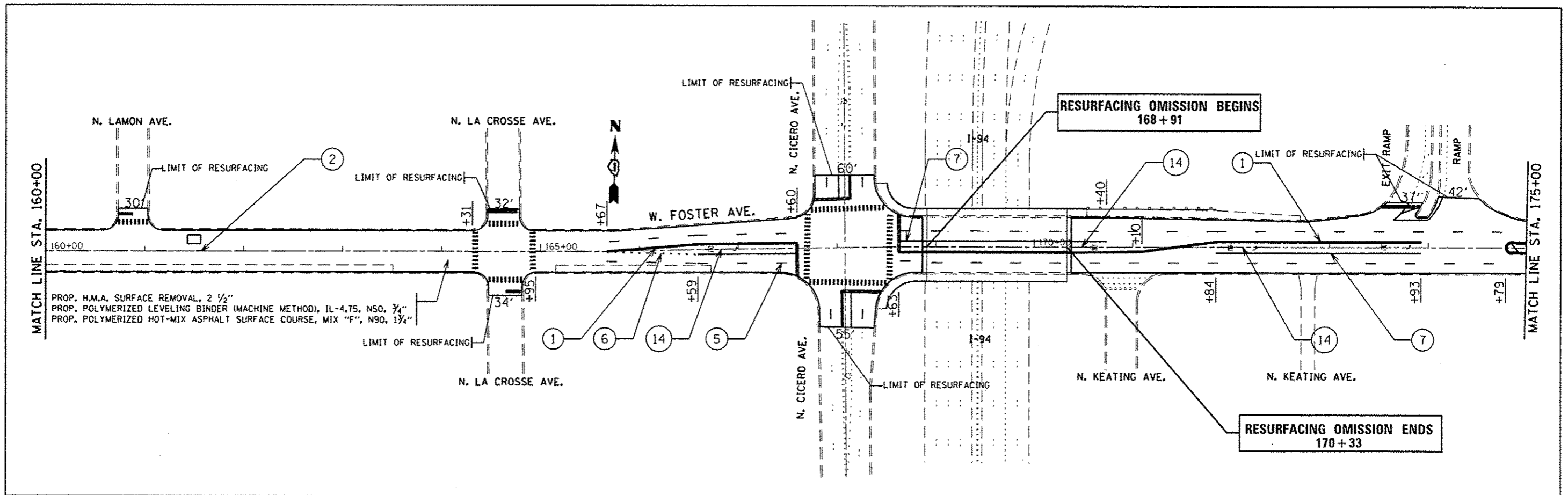


PROP. H.M.A. SURFACE REMOVAL, 2 1/2"
 PROP. POLYMERIZED LEVELING BINDER (MACHINE METHOD), IL-4.75, N50, 3/4"
 PROP. POLYMERIZED HOT-MIX ASPHALT SURFACE COURSE, MIX "F", N90, 1 3/4"

PROP. H.M.A. SURFACE REMOVAL, 1 3/4"
 PROP. POLYMERIZED HMA SURFACE COURSE, MIX "F", 1 3/4"

1 REVISED SHEET 5/22/13 FG

FILE NAME:	USER NAME: guillaumefp	DESIGNED: -	REVISED: -	STATE OF ILLINOIS DEPARTMENT OF TRANSPORTATION	FOSTER AVE HARLEM AVE TO ASHLAND AVE	F.A.U. RTE.:	SECTION:	COUNTY:	TOTAL SHEETS:	SHEET NO.:	
c:\pwork\p\dot\guillaumefp\d0301468\0	36812-shi-plan.dgn	DRAWN: -	REVISED: -			1360	2012-009RS	COOK	33	13	
Default	PLOT SCALE: 1/8" = 1'-0"	CHECKED: -	REVISED: -			CONTRACT NO. 60T51					
	PLOT DATE: 5/22/2013	DATE: -	REVISED: -			ILLINOIS FED. AID PROJECT					
						SCALE:	SHEET 5 OF 14 SHEETS	STA. TO STA.			

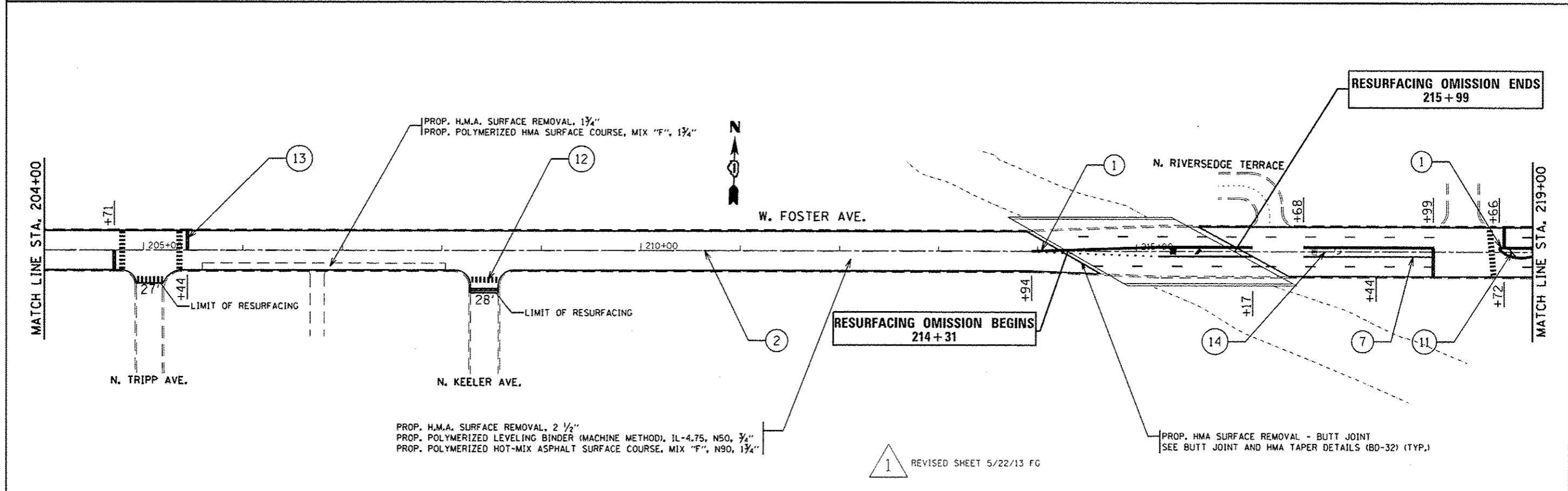
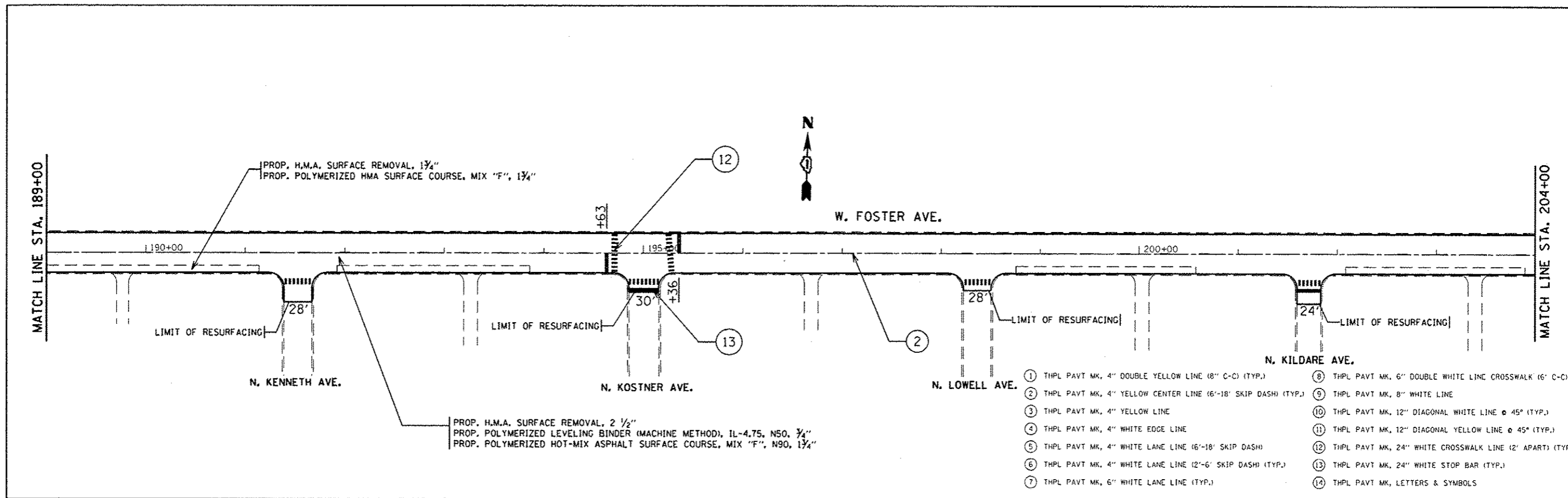


- ① THPL PAVT MK, 4" DOUBLE YELLOW LINE (8" C-C) (TYP.)
- ② THPL PAVT MK, 4" YELLOW CENTER LINE (6'-18" SKIP DASH) (TYP.)
- ③ THPL PAVT MK, 4" YELLOW LINE
- ④ THPL PAVT MK, 4" WHITE EDGE LINE
- ⑤ THPL PAVT MK, 4" WHITE LANE LINE (6'-18" SKIP DASH)
- ⑥ THPL PAVT MK, 4" WHITE LANE LINE (2'-6" SKIP DASH) (TYP.)
- ⑦ THPL PAVT MK, 6" WHITE LANE LINE (TYP.)
- ⑧ THPL PAVT MK, 6" DOUBLE WHITE LINE CROSSWALK (6' C-C)
- ⑨ THPL PAVT MK, 8" WHITE LINE
- ⑩ THPL PAVT MK, 12" DIAGONAL WHITE LINE @ 45° (TYP.)
- ⑪ THPL PAVT MK, 12" DIAGONAL YELLOW LINE @ 45° (TYP.)
- ⑫ THPL PAVT MK, 24" WHITE CROSSWALK LINE (2' APART) (TYP.)
- ⑬ THPL PAVT MK, 24" WHITE STOP BAR (TYP.)
- ⑭ THPL PAVT MK, LETTERS & SYMBOLS

1 REVISED SHEET 5/22/13 FG

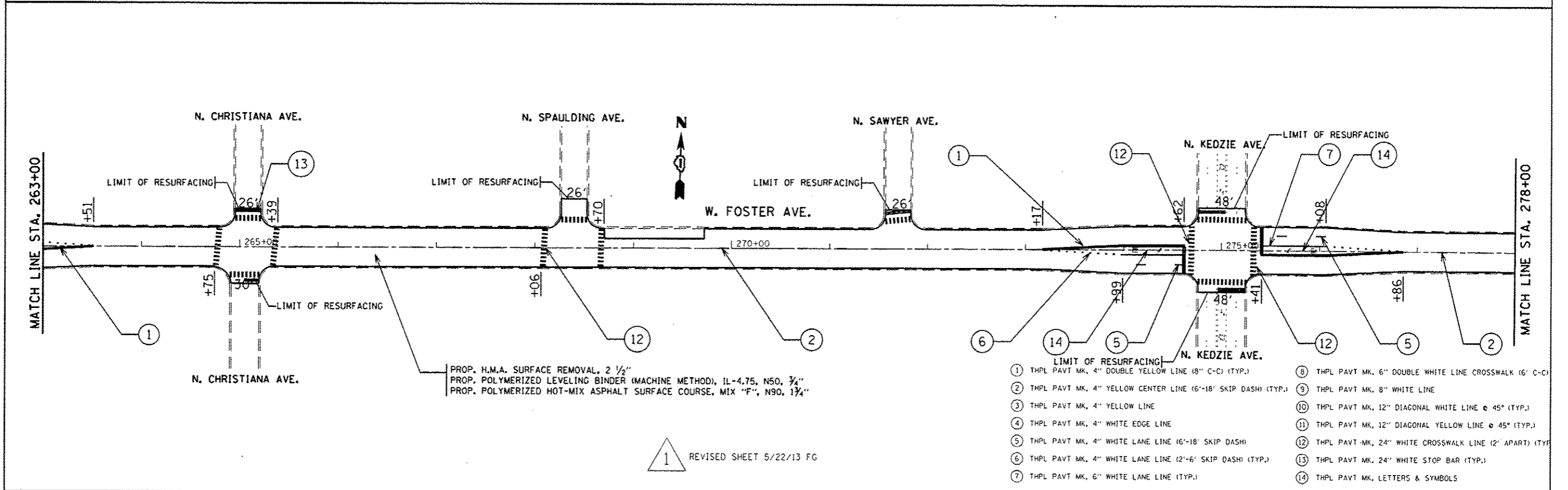
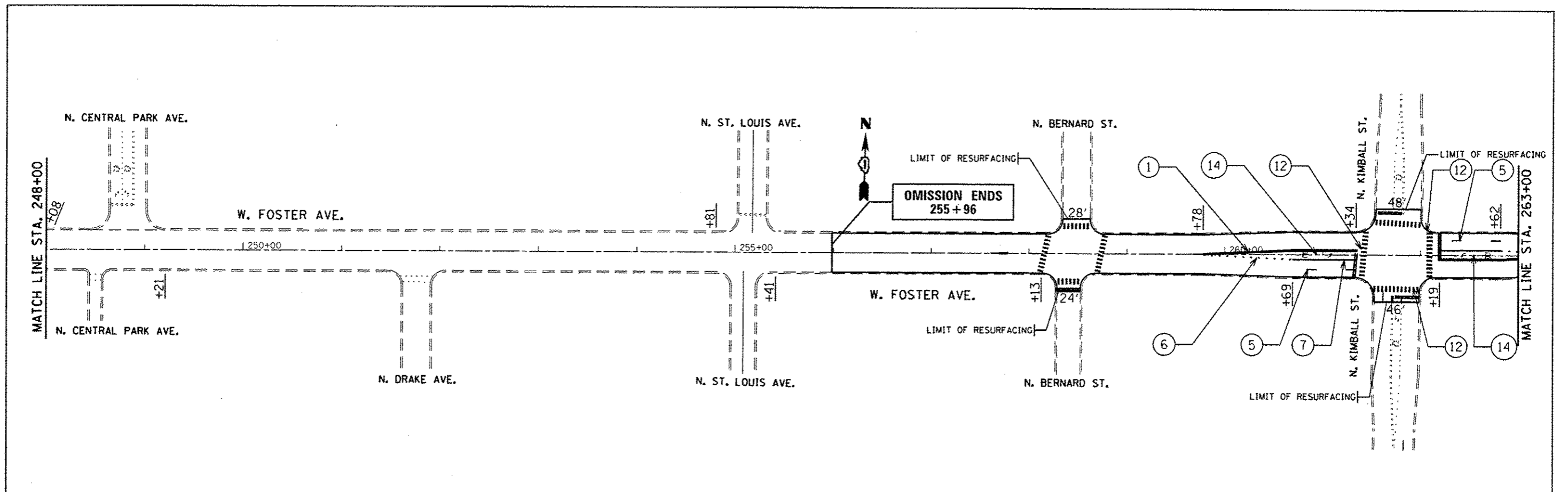
FILE NAME :	USER NAME : guillaumefp	DESIGNED -	REVISED -	STATE OF ILLINOIS DEPARTMENT OF TRANSPORTATION	FOSTER AVE HARLEM AVE TO ASHLAND AVE		F.A.U. RTE.	SECTION	COUNTY	TOTAL SHEETS	SHEET NO.	
cr:\p\work\pwidot\guillaumefp\d8301468\	36812-shr\plan.dgn	DRAWN -	REVISED -		SCALE:	SHEET 7 OF 14 SHEETS	STA.	1360	2012-009RS	COOK	33	15
Default	PLOT SCALE = 1/80.0000 = 1" = 80'	CHECKED -	REVISED -				TO STA.					
	PLOT DATE = 5/22/2013	DATE -	REVISED -									

ILLINOIS FED. AID PROJECT
CONTRACT NO. 60751



1 REVISED SHEET 5/22/13 FG

FILE NAME:	USER NAME: guillaumefp	DESIGNED: -	REVISED: -	STATE OF ILLINOIS DEPARTMENT OF TRANSPORTATION	FOSTER AVE HARLEM AVE TO ASHLAND AVE	F.A.U. RTE:	SECTION	COUNTY	TOTAL SHEETS	SHEET NO.	
Default	Plot Scale: 100,0000 / in.	CHECKED: -	REVISED: -			1360	2012-009RS	COOK	33	16	
	PLOT DATE: 5/22/2013	DATE: -	REVISED: -			CONTRACT NO. 60T51					
ILLINOIS FED. AID PROJECT											

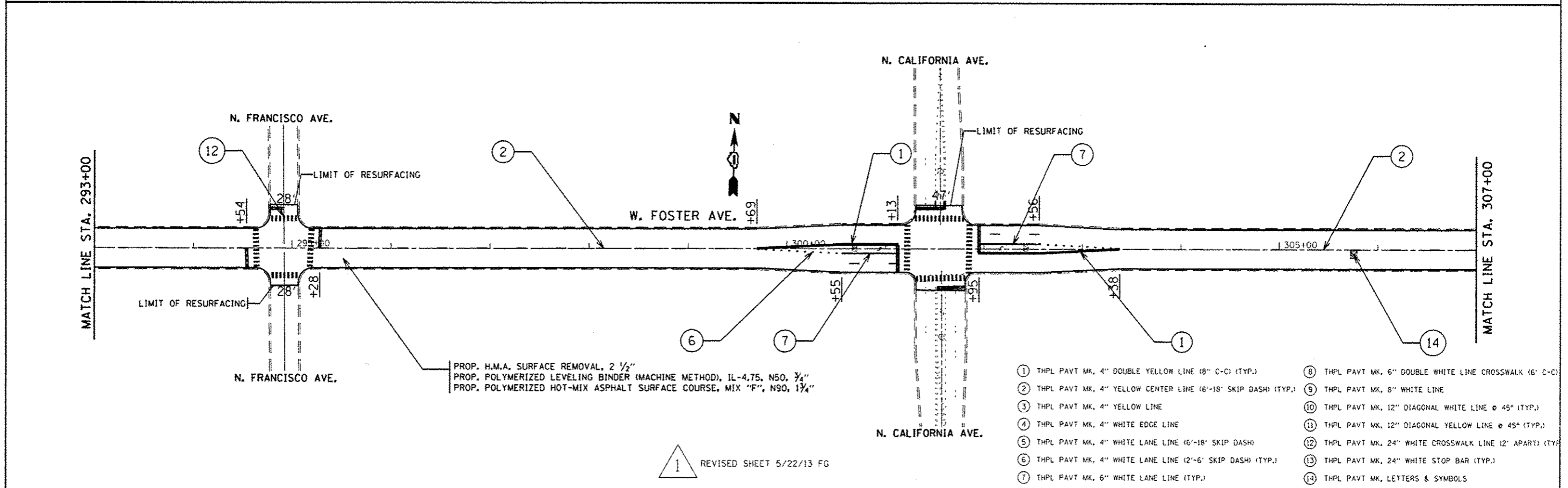
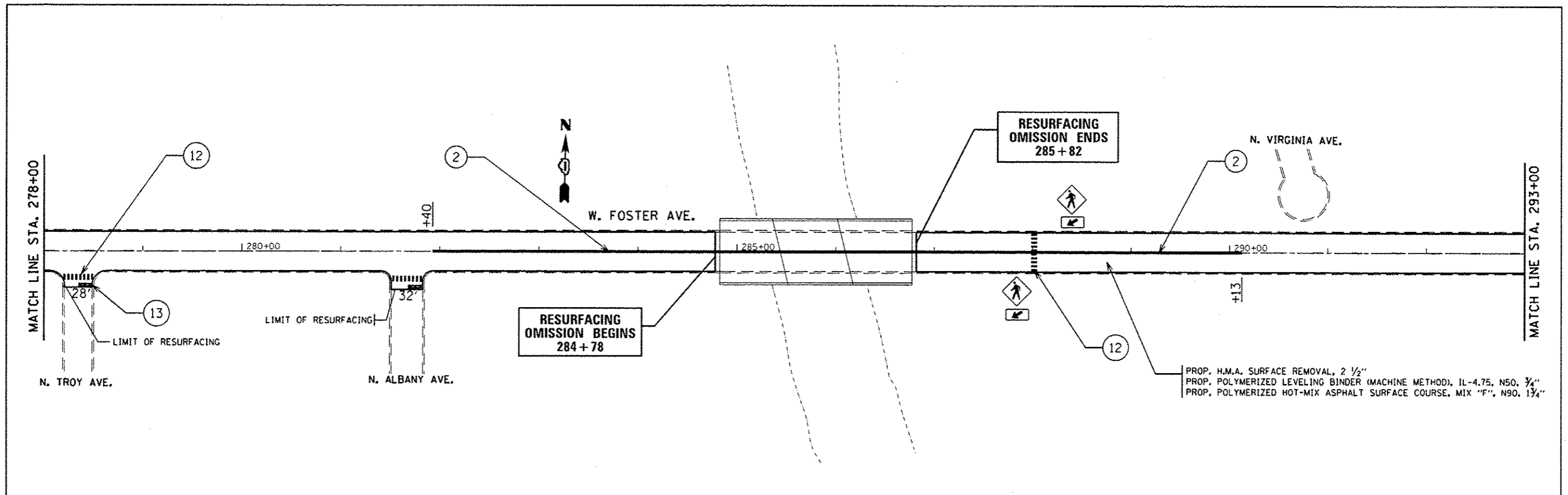


PROP. H.M.A. SURFACE REMOVAL, 2 1/2"
 PROP. POLYMERIZED LEVELING BINDER (MACHINE METHOD), IL-4.75, N50, 3/4"
 PROP. POLYMERIZED HOT-MIX ASPHALT SURFACE COURSE, MIX "F", N90, 1 3/4"

1 REVISED SHEET 5/22/13 FG

- ① THPL PAVT MK, 4" DOUBLE YELLOW LINE (8" C-C) (TYP.)
- ② THPL PAVT MK, 4" YELLOW CENTER LINE (6'-18" SKIP DASH) (TYP.)
- ③ THPL PAVT MK, 4" YELLOW LINE
- ④ THPL PAVT MK, 4" WHITE EDGE LINE
- ⑤ THPL PAVT MK, 4" WHITE LANE LINE (6'-18" SKIP DASH)
- ⑥ THPL PAVT MK, 4" WHITE LANE LINE (2'-6" SKIP DASH) (TYP.)
- ⑦ THPL PAVT MK, 6" WHITE LANE LINE (TYP.)
- ⑧ THPL PAVT MK, 6" DOUBLE WHITE LINE CROSSWALK (6' C-C)
- ⑨ THPL PAVT MK, 8" WHITE LINE
- ⑩ THPL PAVT MK, 12" DIAGONAL WHITE LINE @ 45° (TYP.)
- ⑪ THPL PAVT MK, 12" DIAGONAL YELLOW LINE @ 45° (TYP.)
- ⑫ THPL PAVT MK, 24" WHITE CROSSWALK LINE (2' APART) (TYP.)
- ⑬ THPL PAVT MK, 24" WHITE STOP BAR (TYP.)
- ⑭ THPL PAVT MK, LETTERS & SYMBOLS

FILE NAME :	USER NAME :	DESIGNED :	REVISED :	STATE OF ILLINOIS DEPARTMENT OF TRANSPORTATION	FOSTER AVE HARLEM AVE TO ASHLAND AVE		F.A.J. RTE.	SECTION	COUNTY	TOTAL SHEETS	SHEET NO.	
cr:\pwork\p\dot\guillaumefp\0381460\0	36812-shr-pln.dgn	DRAWN :	REVISED :		SCALE:	SHEET 10 OF 14 SHEETS	STA.	1360	2012-009RS	COOK	33	18
Default	PLOT SCALE = 100.0000 / in	CHECKED :	REVISED :				TO STA.	CONTRACT NO. 60T51				
	PLOT DATE = 5/22/2013	DATE :	REVISED :		ILLINOIS FED. AID PROJECT							

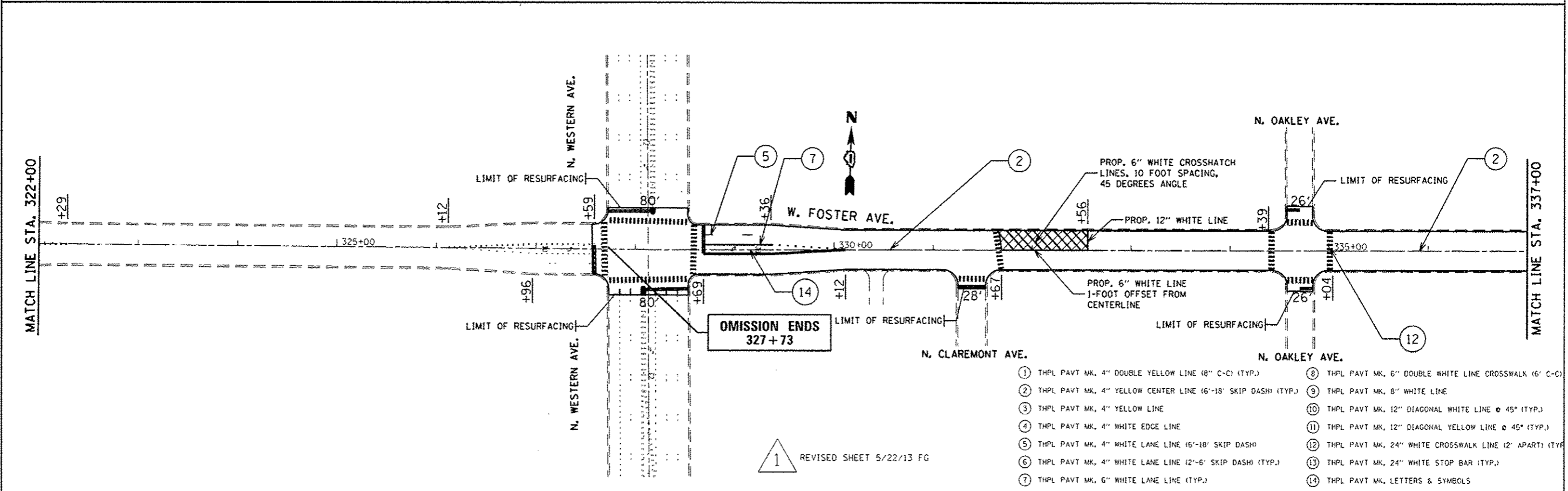
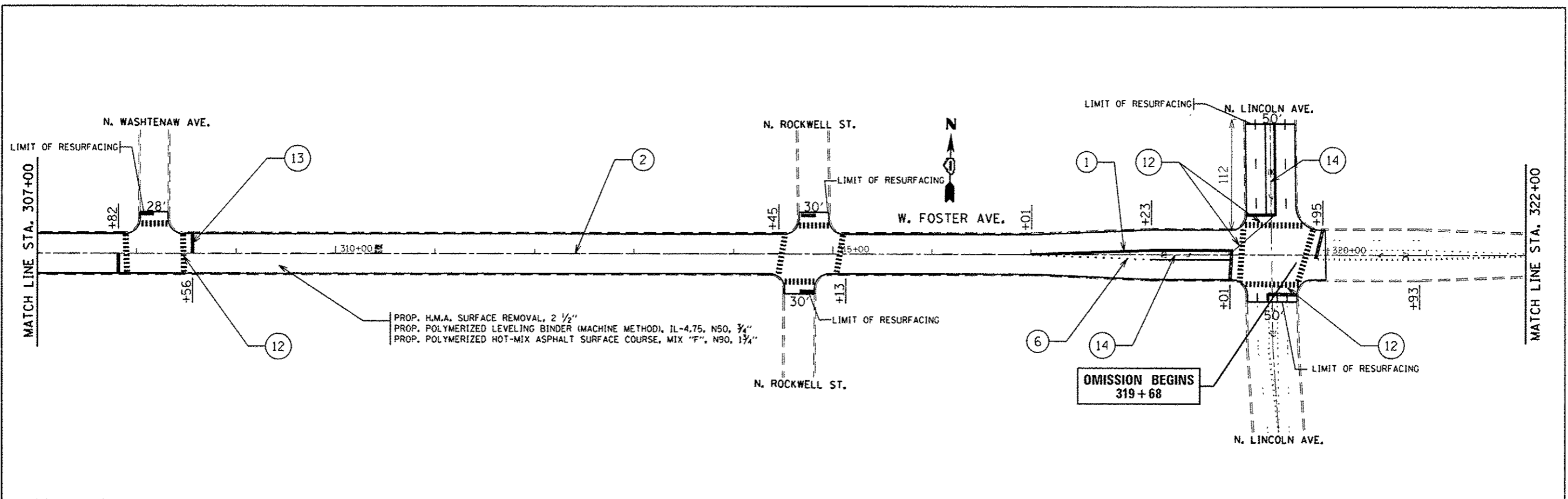


PROP. H.M.A. SURFACE REMOVAL, 2 1/2"
 PROP. POLYMERIZED LEVELING BINDER (MACHINE METHOD), IL-4.75, N50, 3/4"
 PROP. POLYMERIZED HOT-MIX ASPHALT SURFACE COURSE, MIX "F", N90, 1 1/4"

- ① THPL PAVT MK, 4" DOUBLE YELLOW LINE (8" C-C) (TYP.)
- ② THPL PAVT MK, 4" YELLOW CENTER LINE (6'-18" SKIP DASH) (TYP.)
- ③ THPL PAVT MK, 4" YELLOW LINE
- ④ THPL PAVT MK, 4" WHITE EDGE LINE
- ⑤ THPL PAVT MK, 4" WHITE LANE LINE (6'-18" SKIP DASH)
- ⑥ THPL PAVT MK, 4" WHITE LANE LINE (2'-6" SKIP DASH) (TYP.)
- ⑦ THPL PAVT MK, 6" WHITE LANE LINE (TYP.)
- ⑧ THPL PAVT MK, 6" DOUBLE WHITE LINE CROSSWALK (6' C-C)
- ⑨ THPL PAVT MK, 8" WHITE LINE
- ⑩ THPL PAVT MK, 12" DIAGONAL WHITE LINE @ 45° (TYP.)
- ⑪ THPL PAVT MK, 12" DIAGONAL YELLOW LINE @ 45° (TYP.)
- ⑫ THPL PAVT MK, 24" WHITE CROSSWALK LINE (2' APART) (TYP.)
- ⑬ THPL PAVT MK, 24" WHITE STOP BAR (TYP.)
- ⑭ THPL PAVT MK, LETTERS & SYMBOLS

1 REVISED SHEET 5/22/13 FG

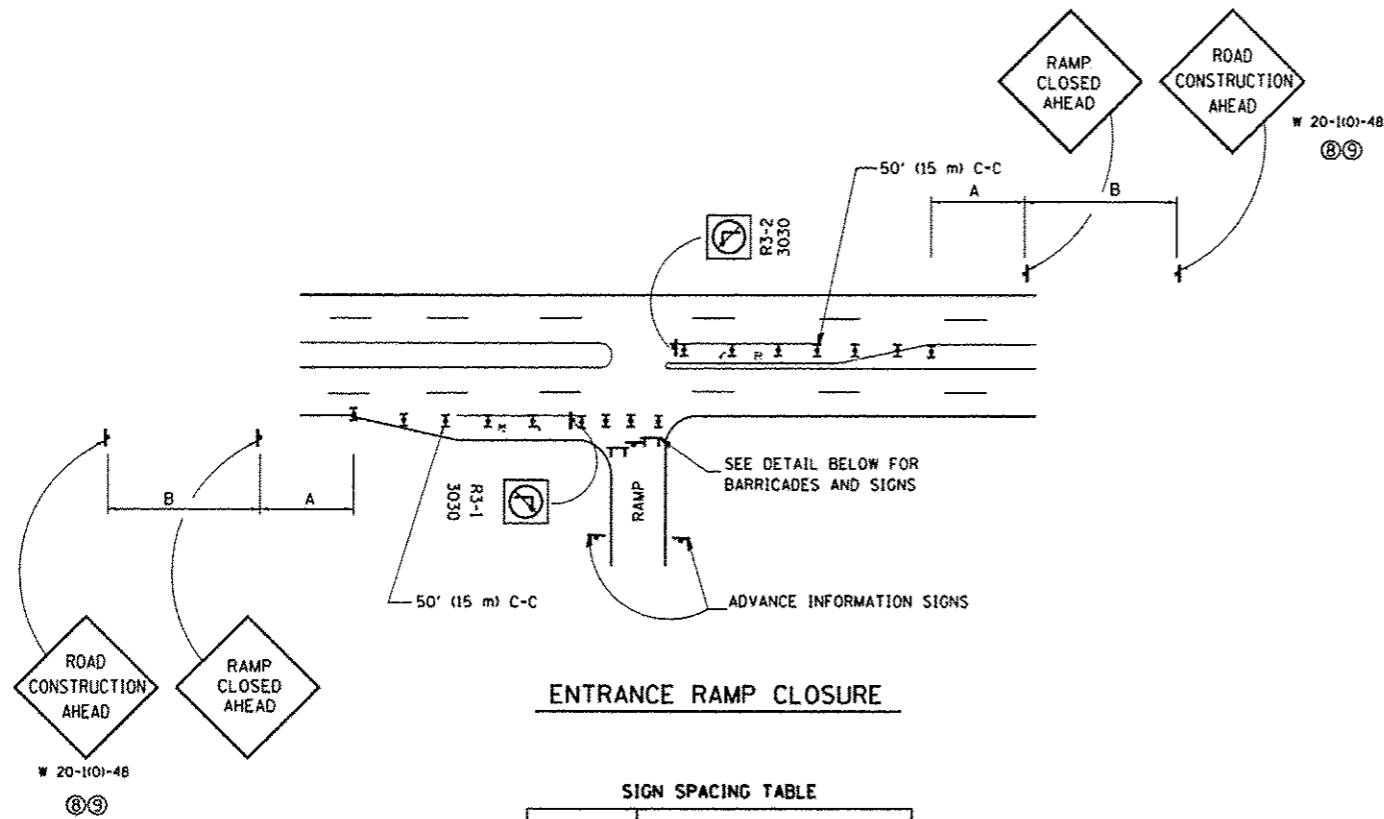
FILE NAME :	USER NAME : guillaumefo	DESIGNED -	REVISED -	STATE OF ILLINOIS DEPARTMENT OF TRANSPORTATION	FOSTER AVE HARLEM AVE TO ASHLAND AVE	F.A.U. RTE.	SECTION	COUNTY	TOTAL SHEETS	SHEET NO.	
Default	c:\pwork\pwork\guillaumefo\0301468\36812-sht-plan.dgn	DRAWN -	REVISED -		SCALE:	SHEET 11 OF 14 SHEETS STA. TO STA.	1360	2012-009RS	COOK	33	19
	PLOT SCALE = 1/8" = 100'	CHECKED -	REVISED -		CONTRACT NO. 60751						
	PLOT DATE = 5/22/2013	DATE -	REVISED -		ILLINOIS FED. AID PROJECT						



- ① THPL PAVT MK, 4" DOUBLE YELLOW LINE (8" C-C) (TYP.)
- ② THPL PAVT MK, 4" YELLOW CENTER LINE (6'-18' SKIP DASH) (TYP.)
- ③ THPL PAVT MK, 4" YELLOW LINE
- ④ THPL PAVT MK, 4" WHITE EDGE LINE
- ⑤ THPL PAVT MK, 4" WHITE LANE LINE (6'-18' SKIP DASH)
- ⑥ THPL PAVT MK, 4" WHITE LANE LINE (12'-6" SKIP DASH) (TYP.)
- ⑦ THPL PAVT MK, 6" WHITE LANE LINE (TYP.)
- ⑧ THPL PAVT MK, 6" DOUBLE WHITE LINE CROSSWALK (6' C-C)
- ⑨ THPL PAVT MK, 8" WHITE LINE
- ⑩ THPL PAVT MK, 12" DIAGONAL WHITE LINE @ 45° (TYP.)
- ⑪ THPL PAVT MK, 12" DIAGONAL YELLOW LINE @ 45° (TYP.)
- ⑫ THPL PAVT MK, 24" WHITE CROSSWALK LINE (2' APART) (TYP.)
- ⑬ THPL PAVT MK, 24" WHITE STOP BAR (TYP.)
- ⑭ THPL PAVT MK, LETTERS & SYMBOLS

1 REVISED SHEET 5/22/13 FG

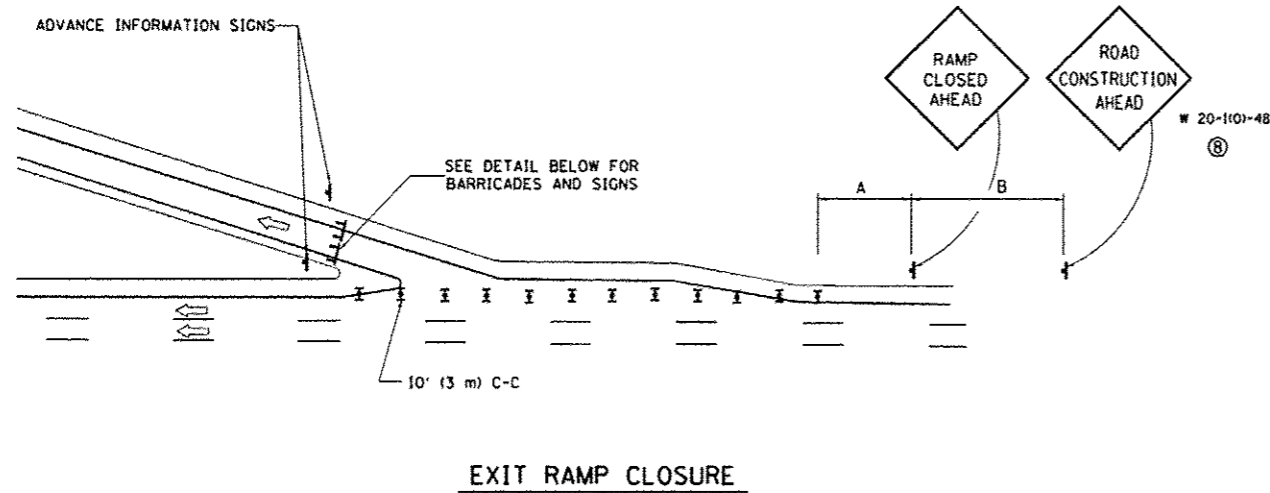
FILE NAME:	USER NAME: guillaumefo	DESIGNED -	REVISED -	STATE OF ILLINOIS DEPARTMENT OF TRANSPORTATION	FOSTER AVE HARLEM AVE TO ASHLAND AVE		F.A.U. RTE.:	SECTION	COUNTY	TOTAL SHEETS	SHEET NO.	
c:\pwwork\pwwork\guillaumefo\d0301450\136812-sht-plan.dgn	36812-sht-plan.dgn	DRAWN -	REVISED -		SCALE:	SHEET 12 OF 14 SHEETS	STA. TO STA.	1360	2012-009RS	COOK	33	20
Default	PLOT SCALE: 1/8"=1'-0"	CHECKED -	REVISED -		CONTRACT NO. 6075							
	PLOT DATE: 5/22/2013	DATE -	REVISED -		ILLINOIS FED. AID PROJECT							



SIGN SPACING TABLE

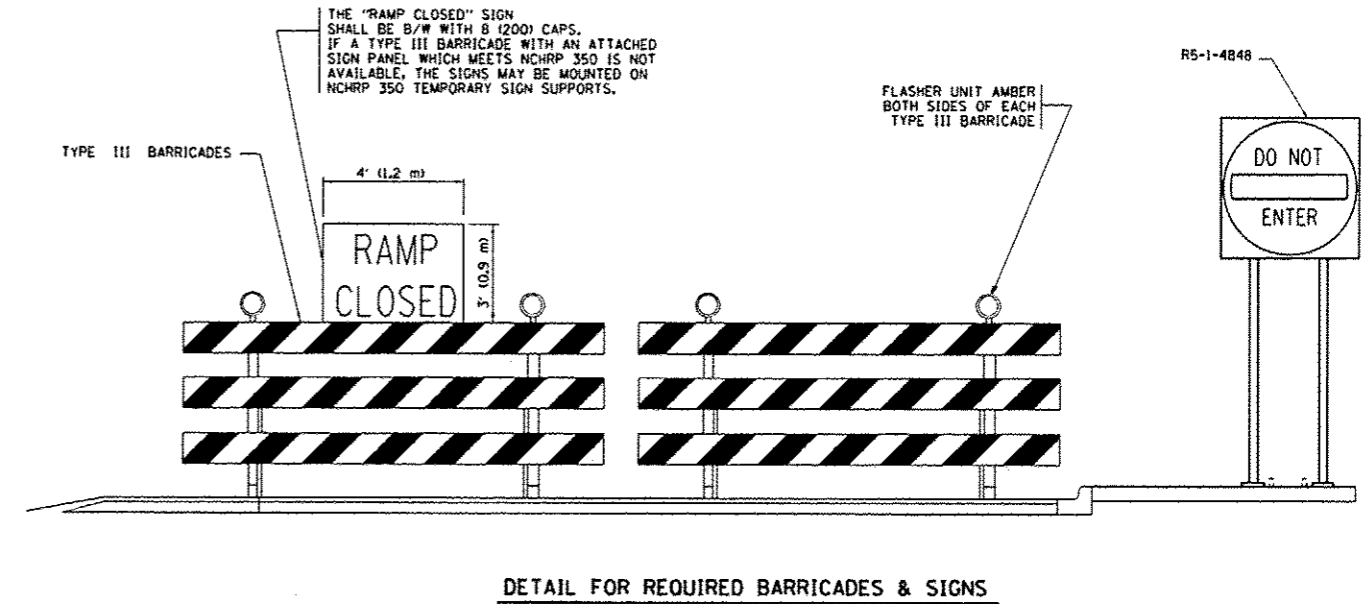
FACILITY	DISTANCE BETWEEN SIGNS	
	A	B
EXPRESSWAY >24 HOURS	1000' (300 m)	1500' (450 m)
EXPRESSWAY ≤24 HOURS	500' (150 m)	500' (150 m)
ARTERIAL ≥45 MPH	350' (100 m)	350' (100 m)
ARTERIAL <45 MPH	150' (45 m)	150' (45 m)

DISTANCES MAY BE SHORTENED DEPENDING UPON THE PROXIMITY OF ADJACENT RAMPS OR INTERSECTIONS.

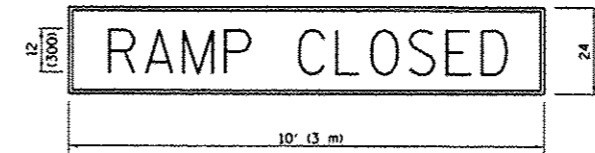


SYMBOLS

- ⊥ TYPE II BARRICADE, DRUM OR VERTICAL BARRICADE WITH STEADY BURN MONO-DIRECTIONAL LIGHT
- ⊥ TYPE III BARRICADE WITH FLASHING LIGHT



RAMP CLOSURE ADVANCE WARNING SIGN

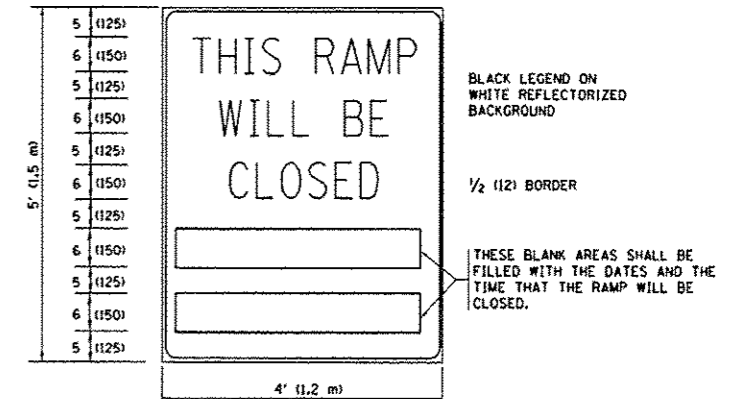


BLACK LEGEND ON ORANGE REFLECTORIZED BACKGROUND

1 (25) BORDER

THESE SIGNS ARE REQUIRED ON ALL THE EXIT GUIDE SIGNS FOR THE CLOSED EXIT RAMPS.

RAMP CLOSURE ADVANCE INFORMATION SIGN



THESE SIGNS ARE REQUIRED ON BOTH SIDES OF THE RAMP, MINIMUM OF 1 WEEK IN ADVANCE OF THE CLOSURE.

GENERAL NOTES:

- ① CONES MAY BE SUBSTITUTED FOR DRUMS OR TYPE II BARRICADES DURING DAY OPERATIONS. CONES SHALL BE A MINIMUM OF 28 (700) HIGH.
- ② STEADY BURN LIGHTS WILL NOT BE REQUIRED FOR DAY OPERATIONS.
- ③ A FLAGGER SHALL BE POSITIONED AT EACH CLOSED RAMP THAT IS OPEN TO CONSTRUCTION VEHICLES.
- ④ ALL ROUTE MARKERS AND TRAILBLAZER ASSEMBLIES WHICH DIRECT MOTORISTS TO A CLOSED ENTRANCE RAMP SHALL BE COVERED.
- ⑤ THE SIGNING AND BARRICADING WHICH IS REQUIRED BY THIS DETAIL SHALL BE INCLUDED IN THE COST OF TRAFFIC CONTROL AND PROTECTION (EXPRESSWAYS).
- ⑥ AUTHORIZATION FROM THE DISTRICT'S BUREAU OF TRAFFIC IS REQUIRED FOR ALL RAMP CLOSURES.
- ⑦ THE RAMP CLOSURE ADVANCE INFORMATION SIGNS SHALL BE ERECTED IF THE CLOSURE TIME EXCEEDS TWENTY-FOUR (24) HOURS. ADDITIONAL ADVANCE WARNING SIGNS ON EXIT GUIDE SIGNING WILL BE REQUIRED FOR EXIT RAMP CLOSURES THAT EXCEED TWENTY-FOUR (24) HOURS IN LENGTH.
- ⑧ ROAD CONSTRUCTION AHEAD SIGNS MAY BE OMITTED WHEN THIS DETAIL IS USED IN CONJUNCTION WITH OTHER TRAFFIC CONTROL THAT ALREADY INCLUDES A ROAD CONSTRUCTION AHEAD SIGN.
- ⑨ ARTERIAL ROAD CONSTRUCTION AHEAD SIGNS MAY BE OMITTED ON CLOSURES LESS THAN 24 HOURS IN DURATION.

1 ADD SHEET 5/22/13 FG

ALL DIMENSIONS ARE IN INCHES (MILLIMETERS) UNLESS OTHERWISE SHOWN.

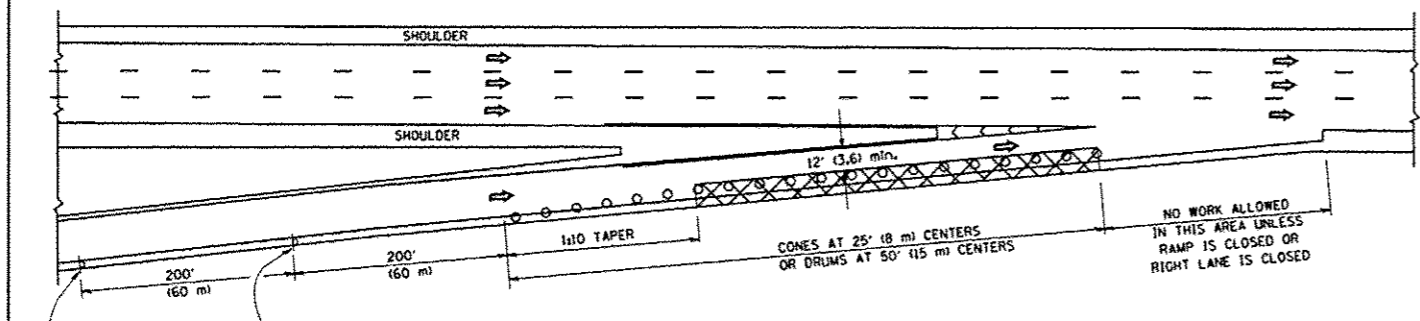
FILE NAME :	USER NAME : guillaumefp	DESIGNED - DWS	REVISED - DWS/JAF 12-02
c:\p\work\p1012\guillaumefp\d030146010	36012-sht-plan.dgn	DRAWN -	REVISED - JAF 02-06
	PLOT SCALE * 1/80.0000 / in.	CHECKED -	REVISED - SPB 01-07
	PLOT DATE * 5/22/2013	DATE - 02-83	REVISED - SPB 12-09

STATE OF ILLINOIS
DEPARTMENT OF TRANSPORTATION

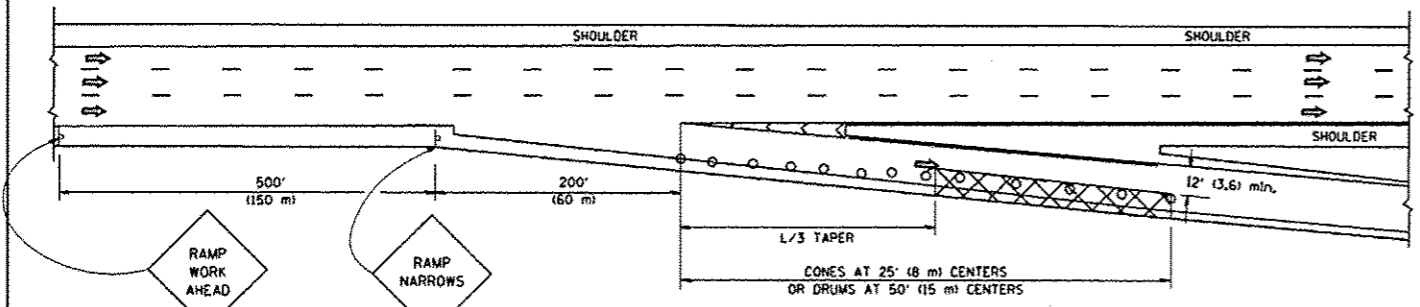
FREeway ENTRANCE AND EXIT RAMP CLOSURE DETAILS			
SCALE: NONE	SHEET NO. 1 OF 1 SHEETS	STA. TO STA.	

F.A.U. RTE.	SECTION	COUNTY	TOTAL SHEETS	SHEET NO.
1360	2012-009RS	COOK	33	33A
TC-08		CONTRACT NO. 60751		
FED. ROAD DIST. NO. 1 ILLINOIS FED. AID PROJECT				

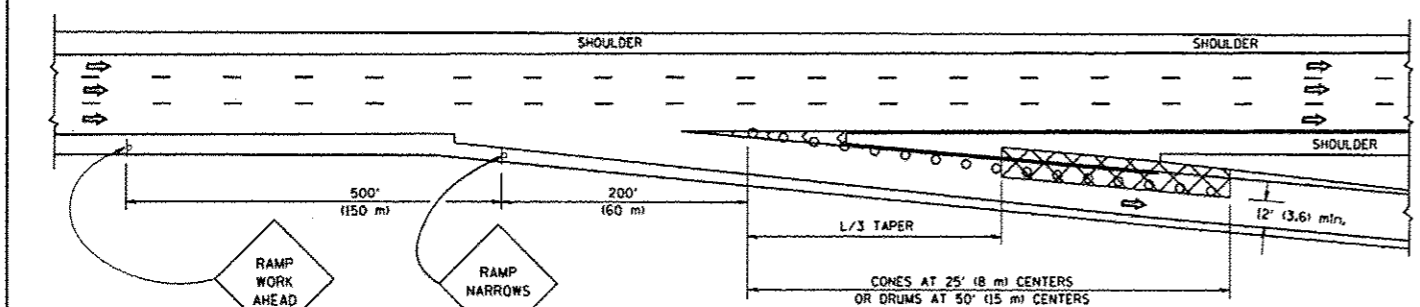
PARTIAL RAMP CLOSURE DETAILS



TYPICAL ENTRANCE RAMP



TYPICAL EXIT RAMP



TYPICAL EXIT RAMP

SYMBOLS

- ACTIVE WORK AREA
- SIGN ON PORTABLE OR PERMANENT SUPPORT
- FLAGGER WITH CONTROL SIGN
- TYPE II BARRICADE, DRUM OR VERTICAL BARRICADE WITH STEADY BURN MONO-DIRECTIONAL LIGHT
- CONE, DRUM OR BARRICADE

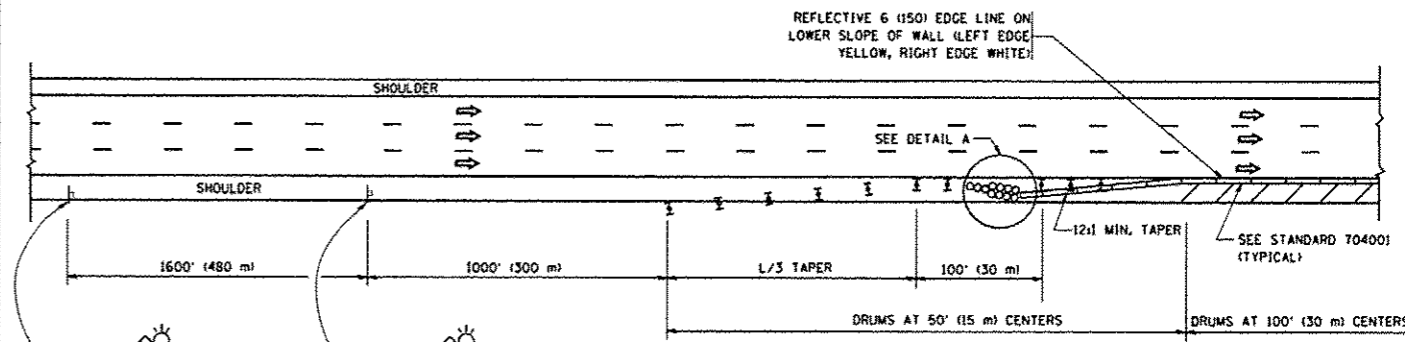
GENERAL NOTES

1. THE "L" DISTANCE EQUALS:

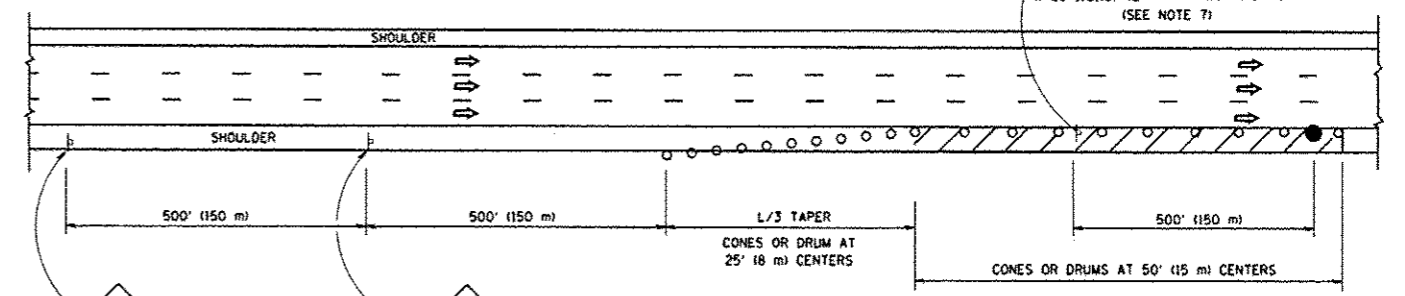
SPEED LIMIT	FORMULAS
45 mph (80 km/h) OR GREATER:	METRIC ENGLISH
	$L = 0.6S(W/S)$ $L = (W/S)$

W = WIDTH OF OFFSET IN FEET (METERS)
S = NORMAL POSTED SPEED MPH (KM/H)
2. PLASTIC DRUMS WITH HIGH PERFORMANCE REFLECTIVE SHEETING AND STEADY BURNING LIGHTS ARE REQUIRED FOR ALL NIGHTTIME CLOSURES.
3. ALL SIGNS SHALL BE POST MOUNTED IF THE CLOSURE TIME EXCEEDS FOUR DAYS.
4. FLASHING LIGHTS SHALL BE USED DURING THE HOURS OF DARKNESS AND SHALL BE INSTALLED ABOVE THE FIRST TWO SETS OF SIGNS.

SHOULDER CLOSURE DETAILS



PERMANENT SHOULDER CLOSURE



DAYTIME SHOULDER CLOSURE

THIS DETAIL IS USED WHERE:
1. VEHICLES, EQUIPMENT, WORKERS OR THEIR ACTIVITIES ENCR OACH IN AN AREA CLOSER THAN 15' (4.5 m) TO THE EDGE OF PAVEMENT FOR A PERIOD IN EXCESS OF 15 MINUTES.

ARRAY DESIGN PER MANUFACTURER TO BE NCHRP 350 COMPLIANT.

DETAIL "A"
IMPACT ATTENUATOR, TEMPORARY
(SEE NOTE 5)

1 ADD SHEET 5/22/13 FG

ALL DIMENSIONS ARE IN INCHES (MILLIMETERS) UNLESS OTHERWISE SHOWN.

FILE NAME: c:\p\work\p\widet\guillaumefp\0301460\	USER NAME: guillaumefp	DESIGNED: -	REVISED: - 04-03	STATE OF ILLINOIS DEPARTMENT OF TRANSPORTATION	TRAFFIC CONTROL DETAILS FOR FREEWAY SHOULDER CLOSURES AND PARTIAL RAMP CLOSURES		F.A.U. RTE.:	SECTION:	COUNTY:	TOTAL SHEET NO.:	
		DRAWN: - D.W.S.	REVISED: - J.A.F. 12-06		1360	2012-009RS	COOK	33	33B		
		CHECKED: -	REVISED: - S.P.B. 01-07		TC-17		CONTRACT NO. 60751				
		DATE: - 11-96	REVISED: - S.P.B. 12-09		SCALE: NONE		SHEET NO. 1 OF 1 SHEETS		STA. TO STA.		FED. ROAD DIST. NO. 1 ILLINOIS FED. AID PROJECT
					1						