

- (A) THERMOPLASTIC PAVEMENT MARKING - LINE 8" (WHITE)
- (B) THERMOPLASTIC PAVEMENT MARKING - LINE 4" (YELLOW)
TWO LINES @ 11" C-C
- (C) THERMOPLASTIC PAVEMENT MARKING - LINE 24" (WHITE)
- (D) THERMOPLASTIC PAVEMENT MARKING - LINE 12" (YELLOW),
5 (FIVE) EQUALLY SPACED DIAGONALS @ 45°
- (E) THERMOPLASTIC PAVEMENT MARKING - LINE 6" (WHITE)
- (F) THERMOPLASTIC PAVEMENT MARKING - LINE 12" (WHITE)
45° DIAGONALS SPACED @ 75' C-C (TYP)

1 STA. 200+82.8

a INSTALL EXISTING SIGN PANELS ON NEW SIGN SUPPORTS

b INSTALL EXISTING SIGN PANELS ON NEW OR RELOCATED TRAFFIC SIGNAL POLE

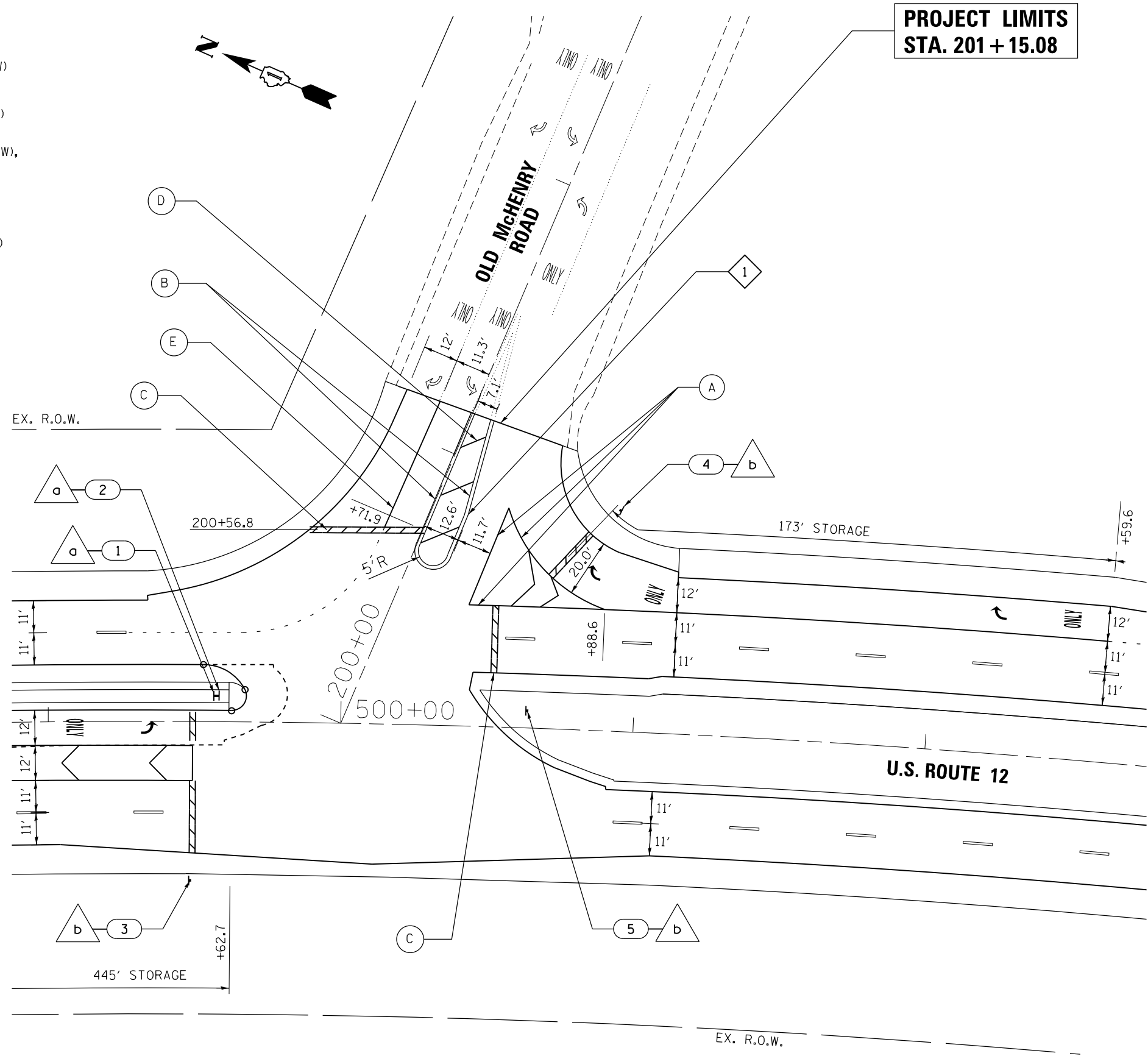
1 STA 499+57.0, 8.8' LT
R3-5 (30"X36")
R10-12 (30"X36")

2 STA 499+58.0, 8.8' LT
R4-7 (24"X30")

3 STA 499+48.7, 54.4' RT
M1-6 (24"X24")
D3-1 (54"X12")
M6-1 (21"X15")

4 STA 500+92.5, 75.6' LT
M1-6 (24"X24")
D3-1 (54"X12")
M6-1 (21"X15")
R3-5 (30"X36")
R10-12 (30"X36")

5 STA 500+63.6, 5.9' LT
R4-7 (24"X30")



FILE NAME =	USER NAME = mm11er	DESIGNED - BA	REVISED -	STATE OF ILLINOIS DEPARTMENT OF TRANSPORTATION	PAVEMENT MARKING PLAN			F.A.P. RTE.	SECTION	COUNTY	TOTAL SHEETS	SHEET NO.
Default	PLOT SCALE = 48.0000' / in.	DRAWN - BA	REVISED -		334	TR-TS	LAKE	58	30			
	PLOT DATE = 3/27/2013	CHECKED - WK	REVISED -		CONTRACT NO. 60T88			ILLINOIS FED. AID PROJECT				
		DATE - 3/27/13	REVISED -	SCALE: 1"=20'	SHEET 2	OF 2 SHEETS	STA.	TO STA.				