

STATE OF ILLINOIS
DEPARTMENT OF TRANSPORTATION
DIVISION OF HIGHWAYS

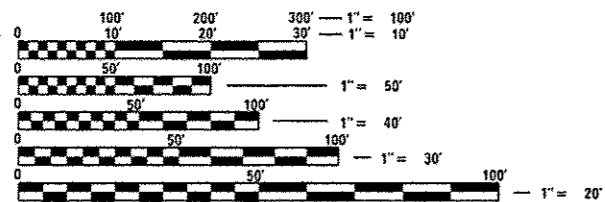
**PROPOSED
HIGHWAY PLANS**

F.A.U. ROUTE 2845: HARWOOD AVENUE
1) 183RD ST. TO ELM RD. 2) ELM RD. TO DIXIE HWY
SECTION: 3160A-RS&N
1) RESURFACING
2) CHANNELIZATION
COOK COUNTY
C-91-506-12

FOR INDEX OF SHEETS, SEE SHEET NO. 2

THIS IMPROVEMENT IS LOCATED IN THE VILLAGE OF HOMEWOOD

TRAFFIC DATA
2010 ADT = 2,300
SPEED LIMIT = 25 MPH

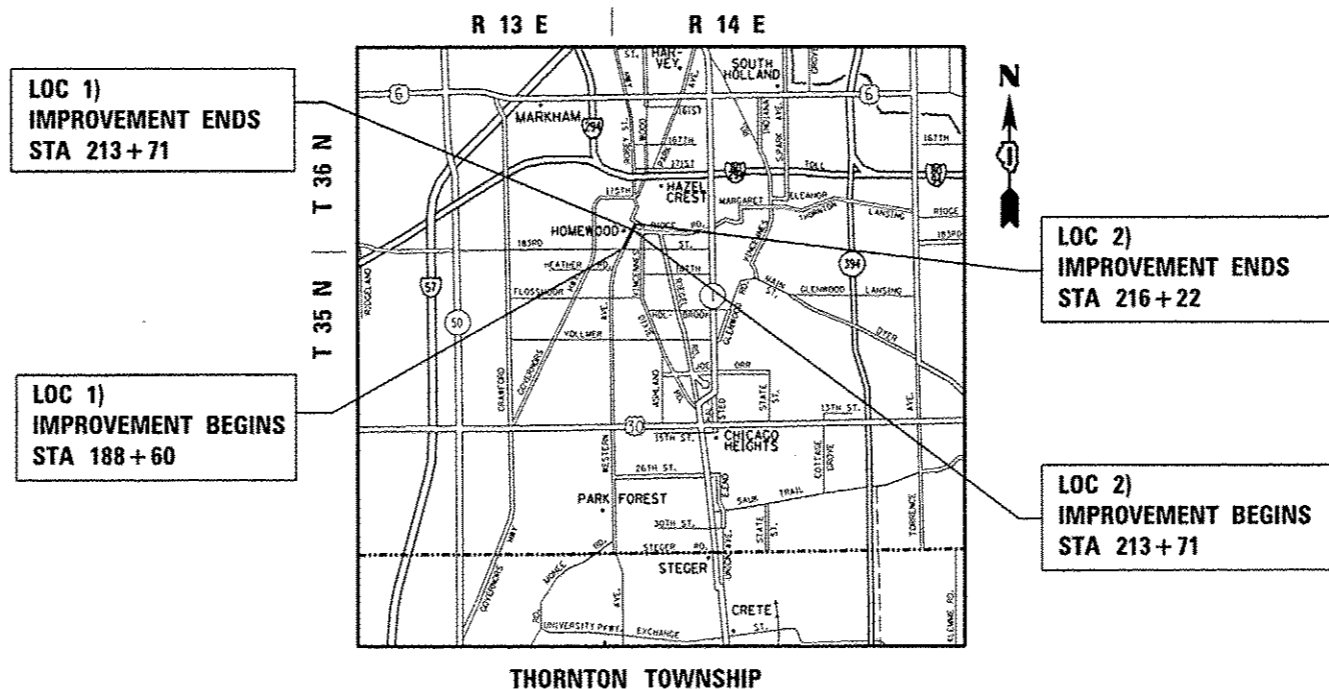


FULL SIZE PLANS HAVE BEEN PREPARED USING STANDARD ENGINEERING SCALES. REDUCED SIZED PLANS WILL NOT CONFORM TO STANDARD SCALES. IN MAKING MEASUREMENTS ON REDUCED PLANS, THE ABOVE SCALES MAY BE USED.

J.U.L.I.E.
JOINT UTILITY LOCATION INFORMATION FOR EXCAVATION
1-800-892-0123
OR 811

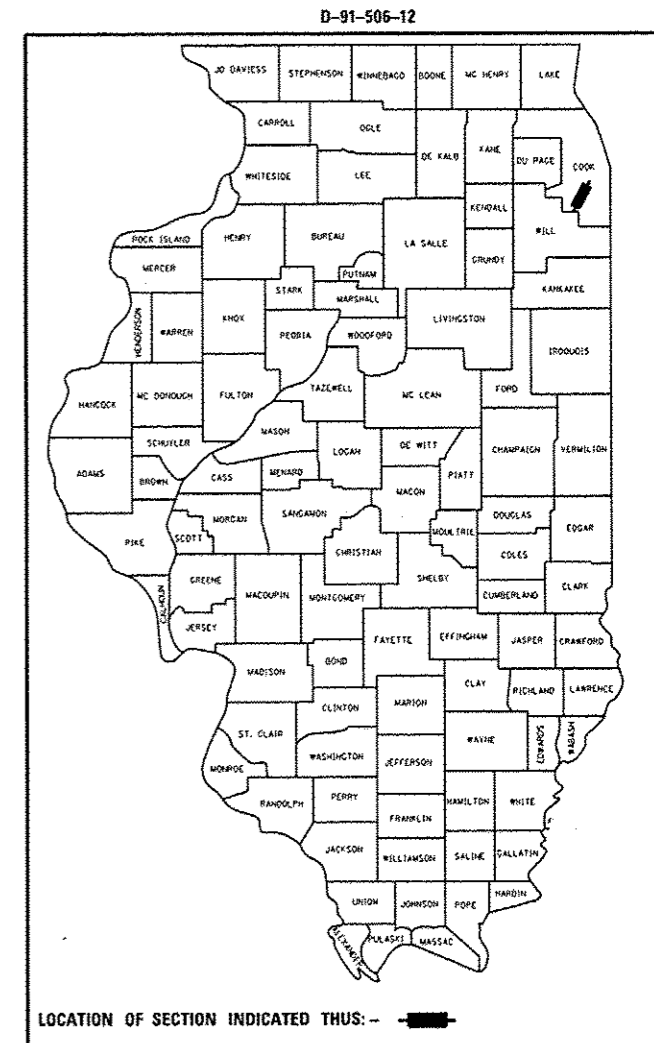
PROJECT ENGINEER: J. ALAIN MIDY (847)221-3056
PROJECT MANAGER: ISSAM RAYYAN

CONTRACT NO. 60T99



GROSS AND NET LENGTH = 2762 FT. = 0.523 MILE

F.A.U. RTE. 2845	SECTION 3160A-RS&N	COUNTY COOK	TOTAL SHEETS 27	SHEET NO. 1
ILLINOIS			CONTRACT NO. 60T99	



LOCATION OF SECTION INDICATED THUS: - [black rectangle] -

STATE OF ILLINOIS
DEPARTMENT OF TRANSPORTATION
DIVISION OF HIGHWAYS

SUBMITTED *March 27 2013*

John D. Baramezzi PE
DEPUTY DIRECTOR OF HIGHWAYS, REGION ENGINEER

May 10 2013
John D. Baramezzi PE
ENGINEER OF DESIGN AND ENVIRONMENT

May 10 2013
Chris Osman PE
DIRECTOR OF HIGHWAYS, CHIEF ENGINEER

PRINTED BY THE AUTHORITY
OF THE STATE OF ILLINOIS