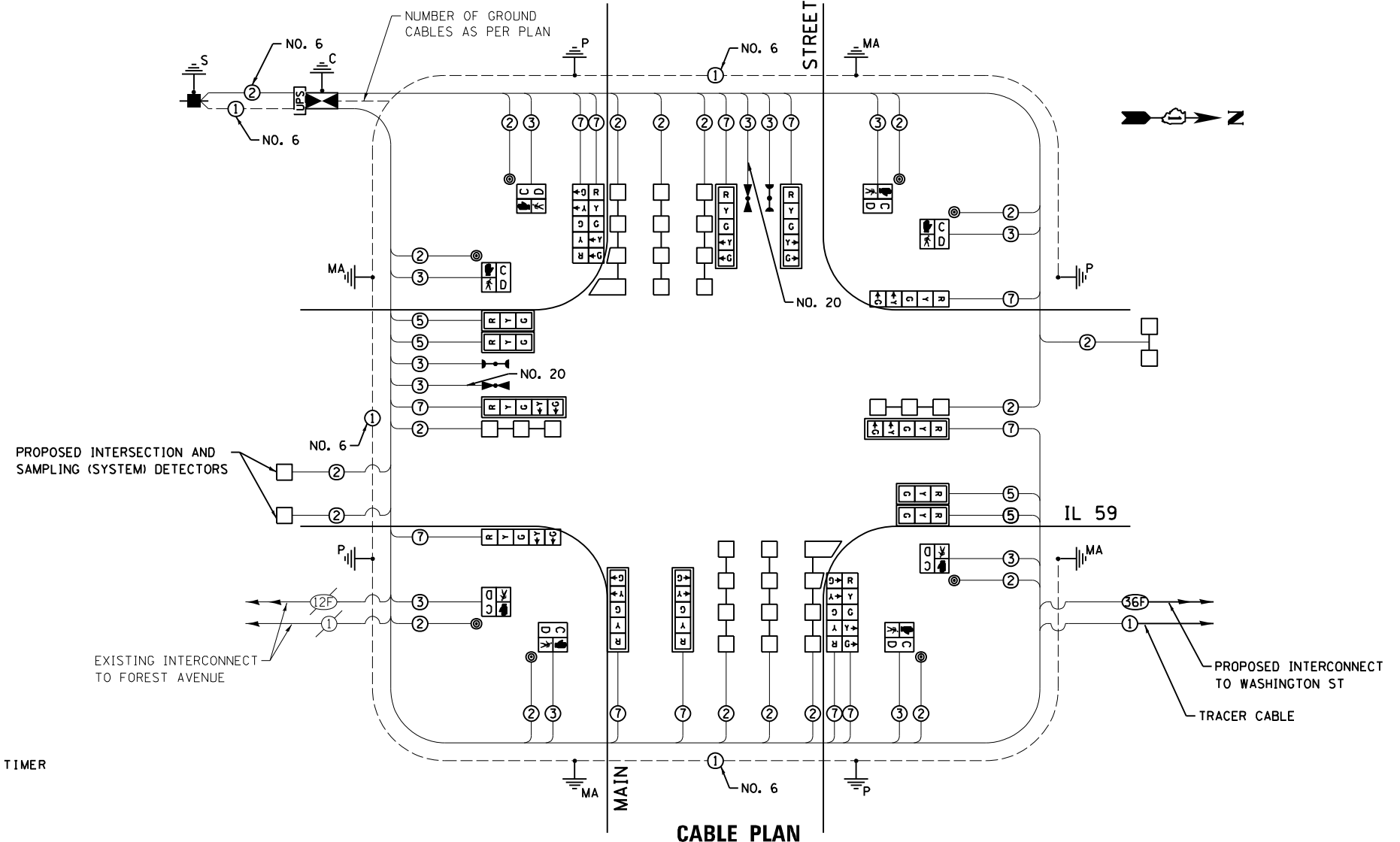
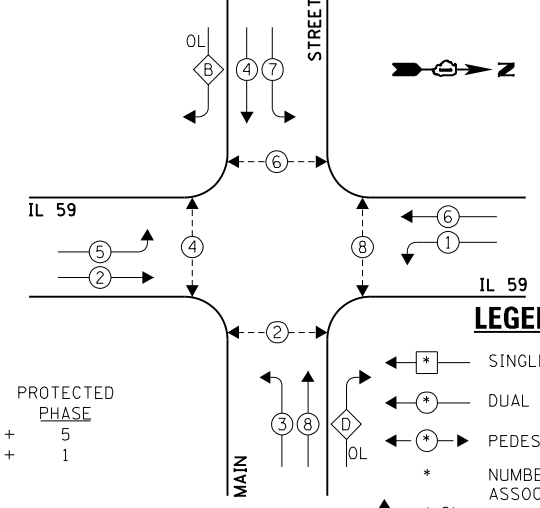


SCHEDULE OF QUANTITIES
IL 59 AT MAIN STREET

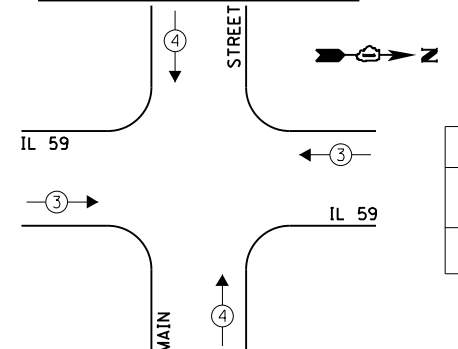
NO.	QUANT.	UNIT	DESCRIPTION
1.	565	SO FT	PORTLAND CEMENT CONCRETE SIDEWALK 5 INCH
2.	100	SO FT	DETECTABLE WARNINGS
3.	200	FOOT	COMBINATION CURB AND GUTTER REMOVAL
4.	565	SO FT	SIDEWALK REMOVAL
5.	3	EACH	FRAMES AND LIDS TO BE ADJUSTED
6.	116	FOOT	COMBINATION CONCRETE CURB AND GUTTER, TYPE B-6.12
7.	84	FOOT	COMBINATION CONCRETE CURB AND GUTTER, TYPE B-6.24
8.	1	CAL MO	ENGINEER'S FIELD OFFICE, TYPE A
9.	0.40	L SUM	MOBILIZATION
10.	0.50	L SUM	TRAFFIC CONTROL AND PROTECTION, STANDARD 701501
11.	0.40	L SUM	TRAFFIC CONTROL AND PROTECTION, STANDARD 701606
12.	0.40	L SUM	TRAFFIC CONTROL AND PROTECTION, STANDARD 701701
13.	0.40	L SUM	TRAFFIC CONTROL AND PROTECTION, STANDARD 701801
14.	12	SO FT	SIGN PANEL - TYPE 1
15.	35	SO FT	SIGN PANEL - TYPE 2
16.	570	FOOT	THERMOPLASTIC PAVEMENT MARKING - LINE 6"
17.	250	FOOT	THERMOPLASTIC PAVEMENT MARKING - LINE 12"
18.	149	FOOT	THERMOPLASTIC PAVEMENT MARKING - LINE 24"
19.	534	SO FT	PAVEMENT MARKING REMOVAL
20.	1	EACH	SERVICE INSTALLATION - POLE MOUNTED
21.	205	FOOT	UNDERGROUND CONDUIT, GALVANIZED STEEL, 2" DIA.
22.	66	FOOT	UNDERGROUND CONDUIT, GALVANIZED STEEL, 2 1/2" DIA.
23.	40	FOOT	UNDERGROUND CONDUIT, GALVANIZED STEEL, 3" DIA.
24.	388	FOOT	UNDERGROUND CONDUIT, GALVANIZED STEEL, 4" DIA.
25.	2	EACH	HANDHOLE
26.	4	EACH	HEAVY-DUTY HANDHOLE
27.	2	EACH	DOUBLE HANDHOLE
28.	1	EACH	TRANSCIVER - FIBER OPTIC
29.	1,177	FOOT	ELECTRIC CABLE IN CONDUIT, SIGNAL NO. 14 2C
30.	1,523	FOOT	ELECTRIC CABLE IN CONDUIT, SIGNAL NO. 14 3C
31.	746	FOOT	ELECTRIC CABLE IN CONDUIT, SIGNAL NO. 14 5C
32.	2,116	FOOT	ELECTRIC CABLE IN CONDUIT, SIGNAL NO. 14 7C
33.	2,242	FOOT	ELECTRIC CABLE IN CONDUIT, LEAD-IN, NO. 14 1 PAIR
34.	49	FOOT	ELECTRIC CABLE IN CONDUIT, SERVICE, NO. 6 2 C
35.	498	FOOT	ELECTRIC CABLE IN CONDUIT, EQUIPMENT GROUNDING CONDUCTOR, NO. 6 1C
36.	4	EACH	TRAFFIC SIGNAL POST, GALVANIZED STEEL 16 FT.
37.	1	EACH	STEEL MAST ARM ASSEMBLY AND POLE, 30 FT.
38.	1	EACH	STEEL MAST ARM ASSEMBLY AND POLE, 36 FT.
39.	1	EACH	STEEL MAST ARM ASSEMBLY AND POLE, 42 FT.
40.	1	EACH	STEEL MAST ARM ASSEMBLY AND POLE, 44 FT.
41.	16	FOOT	CONCRETE FOUNDATION, TYPE A
42.	4	FOOT	CONCRETE FOUNDATION, TYPE C
43.	48	FOOT	CONCRETE FOUNDATION, TYPE E 36-INCH DIAMETER
44.	4	EACH	DRILL EXISTING HANDHOLE
45.	4	EACH	SIGNAL HEAD, LED, 1-FACE, 3-SECTION, MAST-ARM MOUNTED
46.	2	EACH	SIGNAL HEAD, LED, 1-FACE, 5-SECTION, BRACKET MOUNTED
47.	6	EACH	SIGNAL HEAD, LED, 1-FACE, 5-SECTION, MAST-ARM MOUNTED
48.	2	EACH	SIGNAL HEAD, LED, 2-FACE, 5-SECTION, BRACKET MOUNTED
49.	8	EACH	PEDESTRIAN SIGNAL HEAD, LED, 1-FACE, BRACKET MOUNTED WITH COUNTDOWN TIMER
50.	10	EACH	TRAFFIC SIGNAL BACKPLATE, LOUVERED, ALUMINUM
51.	11	EACH	INDUCTIVE LOOP DETECTOR
52.	1,276	FOOT	DETECTOR LOOP, TYPE I
53.	2	EACH	LIGHT DETECTOR
54.	1	EACH	LIGHT DETECTOR AMPLIFIER
55.	8	EACH	PEDESTRIAN PUSH-BUTTON
56.	1	EACH	TEMPORARY TRAFFIC SIGNAL INSTALLATION
57.	1,090	FOOT	REMOVE AND REINSTALL ELECTRIC CABLE FROM CONDUIT
58.	1	EACH	REMOVE EXISTING TRAFFIC SIGNAL EQUIPMENT
59.	8	EACH	REMOVE EXISTING HANDHOLE
60.	9	EACH	REMOVE EXISTING CONCRETE FOUNDATION
61.	274	FOOT	EMERGENCY VEHICLE PRIORITY SYSTEM LINE SENSOR CABLE, NO. 20 3/C
62.	765	FOOT	ROD AND CLEAN EXISTING CONDUIT
63.	1	EACH	FULL-ACTUATED CONTROLLER AND SUPER P CABINET, TYPE IV, SPECIAL
64.	1	EACH	UNINTERRUPTIBLE POWER SUPPLY, SPECIAL
65.	855	SO FT	BRICK PAVEMENT REMOVAL AND REPLACEMENT
66.	77.10	SO FT	TEMPORARY INFORMATION SIGNING
67.	1	EACH	TEMPORARY TRAFFIC SIGNAL TIMING



PROPOSED CONTROLLER SEQUENCE



PROPOSED EMERGENCY VEHICLE PREEMPTION SEQUENCE



PROPOSED EMERGENCY VEHICLE PREEMPTORS		
EMERGENCY VEHICLE PREEMPTOR	3	4
MOVEMENT	←	↑

I.D.O.T. TRAFFIC SIGNAL INSTALLATION ELECTRICAL SERVICE REQUIREMENTS					TOTAL WATTAGE
TYPE	NO. LAMPS	INCAND.	L.E.D.	OPERATION	
SIGNAL (RED)	16	135	17	0.50	136.0
SIGNAL (YELLOW)	16	135	25	0.25	100.0
SIGNAL (GREEN)	16	135	15	0.25	60.0
ARROW	24	135	12	0.10	28.8
PED. SIGNAL	8	90	25	1.00	200.0
CONTROLLER	1	-	100	1.00	100.0
LUMINAIRE	-	-	250	0.50	-
L.E.D. ST. NAME SIGN	-	-	64	0.50	-
VIDEO SYSTEM	-	-	150	1.00	-
BATTERY BACKUP	1	-	25	1.00	25.0
ILLUMINATED SIGN	-	-	25	0.05	-
TOTAL =					649.8

* 100% OF THE COST SHALL BE PAID FOR BY CITY OF WEST CHICAGO

THE TRAFFIC SIGNAL CONTROL EQUIPMENT FOR THIS PROJECT SHALL BE "EAGLE" TO MATCH THE EXISTING ADJACENT SYSTEM.

ENERGY COSTS - BILLED TO: CITY OF WEST CHICAGO
(ADDRESS) 475 MAIN STREET
(ADDRESS) WEST CHICAGO, IL 60186
ENERGY SUPPLY - CONTACT: NEW BUSINESS
PHONE: (866) 639-3552
COMPANY: COM-ED LIBERTYVILLE

FILE NAME = 60V59-TS18.dgn	USER NAME = jwouife	DESIGNED - JRD	REVISED -
#MODELNAME#	PLOT SCALE = 1:20	DRAWN - JPW	REVISED -
	PLOT DATE = 3/22/2013	CHECKED - KLB	REVISED -
		DATE -	REVISED -

STATE OF ILLINOIS
DEPARTMENT OF TRANSPORTATION

SCHEDULE OF QUANTITIES, CABLE PLAN, PHASE DESIGNATION DIAGRAM, & EMERGENCY VEHICLE PREEMPTION SEQUENCE
IL 59 AT MAIN STREET

SCALE: SHEET OF SHEETS STA. TO STA.

F.A.P. RTE. 338	SECTION 2012-056T5	COUNTY DuPAGE	TOTAL SHEETS 32	SHEET NO. 18
ILLINOIS FED. AID PROJECT			CONTRACT NO. 60V59	

GHA #4085.884