

F.A.P. RTE.	SECTION	COUNTY	TOTAL SHEETS	SHEET NO.
326	106X-RS-7	KANE	20	1
ILLINOIS		CONTRACT NO. 60V64		

D-91-042-13

STATE OF ILLINOIS
DEPARTMENT OF TRANSPORTATION
DIVISION OF HIGHWAYS

**PROPOSED
HIGHWAY PLANS**

FAP ROUTE 326 (IL RTE. 47)
SECTION: 106X-RS-7

PLATO ROAD TO US 20 / IL 72
RESURFACING

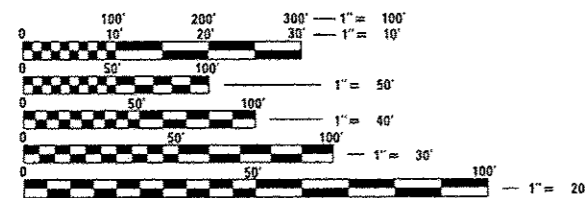
KANE COUNTY
C-91-042-13



FOR INDEX OF SHEETS, SEE SHEET NO. 2

IMPROVEMENTS ARE LOCATED
IN UNINCORPORATED PLATO
AND RUTLAND TOWNSHIPS

FUNCTIONAL CLASSIFICATION
PRINCIPAL ARTERIAL
2011 ADT: 5,600
POSTED SPEED: 45-55 MPH

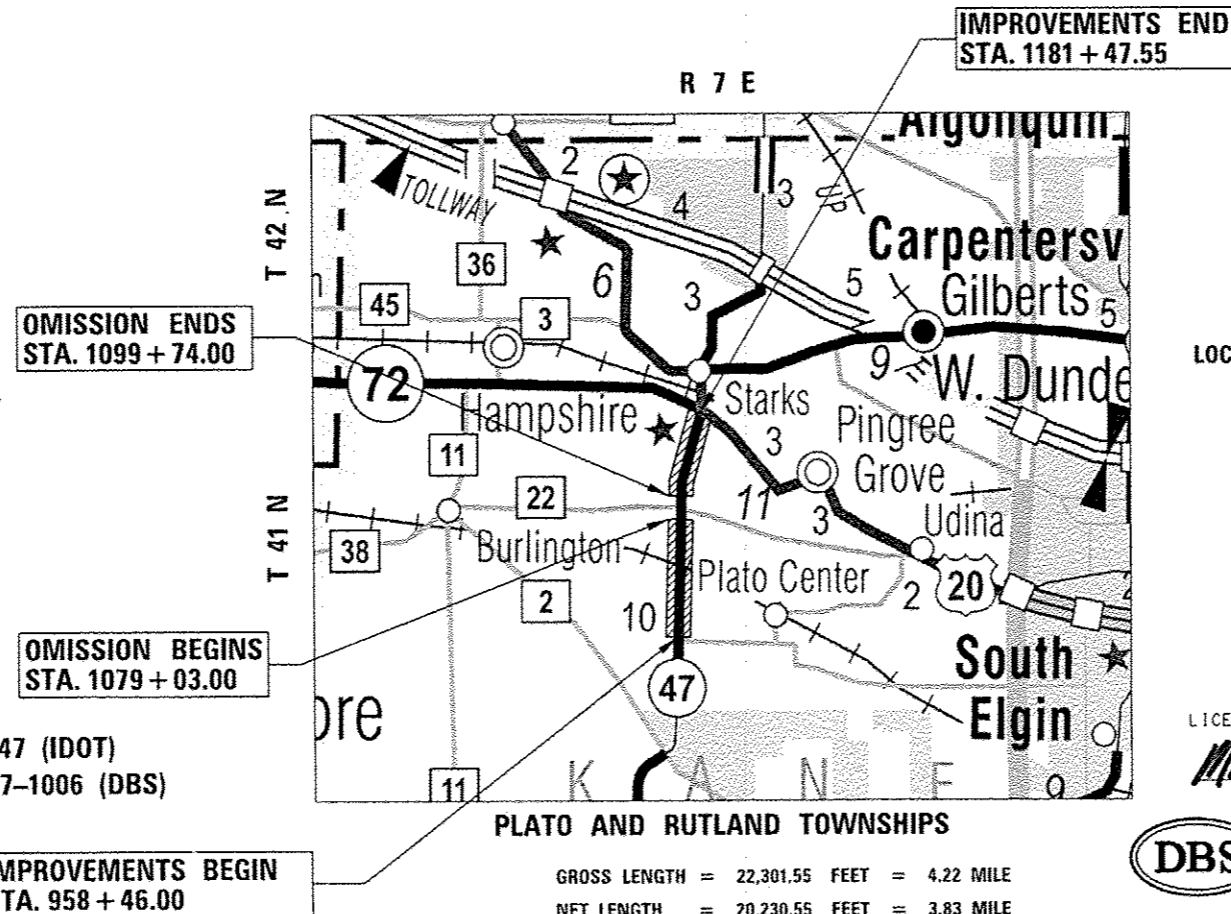


FULL SIZE PLANS HAVE BEEN PREPARED USING STANDARD
ENGINEERING SCALES. REDUCED SIZED PLANS WILL NOT
CONFORM TO STANDARD SCALES. IN MAKING MEASUREMENTS
ON REDUCED PLANS, THE ABOVE SCALES MAY BE USED.

J.U.L.I.E.
JOINT UTILITY LOCATION INFORMATION FOR EXCAVATION
1-800-892-0123
OR 811

DISTRICT ONE -
PROJECT MANAGER: KEN ENG (847) 705-4247 (IDOT)
PROJECT ENGINEER: BEHZAD AMINI (312) 857-1006 (DBS)

CONTRACT NO. 60V64

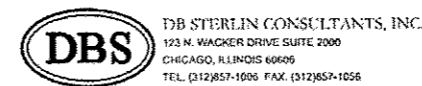


PLATO AND RUTLAND TOWNSHIPS

GROSS LENGTH = 22,301.55 FEET = 4.22 MILE
NET LENGTH = 20,230.55 FEET = 3.83 MILE



LICENSE EXPIRATION DATE 11/30/13
Signature: [Handwritten Signature] 1/25/13
SIGNATURE, DATE



STATE OF ILLINOIS
DEPARTMENT OF TRANSPORTATION
DIVISION OF HIGHWAYS

SUBMITTED January 29, 2013

[Signature]
DEPUTY DIRECTOR OF HIGHWAYS, REGION ENGINEER

ENGINEER OF DESIGN AND ENVIRONMENT

DIRECTOR OF HIGHWAYS, CHIEF ENGINEER

**PRINTED BY THE AUTHORITY
OF THE STATE OF ILLINOIS**