

F.A.U. RYE.	SECTION	COUNTY	TOTAL SHEETS	SHEET NO.
VAR.	2012-084TS	DUPAGE	89	1
FED. ROAD DIST. NO.	ILLINOIS	CONTRACT NO.	60W02	

* 89 + 2 = 91

D-91-148-13

STATE OF ILLINOIS
DEPARTMENT OF TRANSPORTATION
DIVISION OF HIGHWAYS
**PROPOSED
HIGHWAY PLANS**

FOR INDEX OF SHEETS, SEE SHEET NO. 2

IDOT STANDARDS:

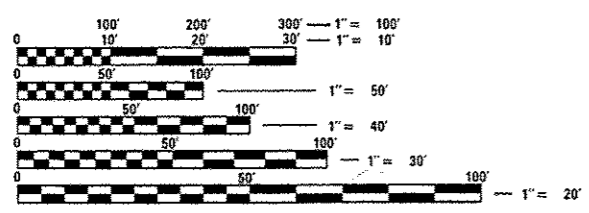
STD. NO.	TITLE
000001-06	STANDARD SYMBOLS, ABBREVIATIONS AND SYMBOLS
701001-02	OFF-ROAD OPERATIONS, 2L, 2W, MORE THAN 15' (4.5m) AWAY
701006-04	OFF-ROAD OPERATIONS, 2L, 2W, 15' (4.5m) TO 24" (600mm) FROM PAVEMENT EDGE
701101-03	OFF-ROAD OPERATIONS, MULTILANE, 15' (4.5m) TO 24" (600mm) FROM PAVEMENT EDGE
701106-02	OFF-ROAD OPERATIONS, MULTILANE, MORE THAN 15' (4.5m) AWAY
701501-06	URBAN LANE CLOSURE, 2L, 2W, UNDIVIDED
701502-05	URBAN LANE CLOSURE, 2L, 2W, BIDIRECTIONAL LEFT TURN LANE
701601-08	URBAN LANE CLOSURE, MULTILANE, 1W, OR 2W WITH NONTRAVERSABLE MEDIAN
701608-08	URBAN LANE CLOSURE, MULTILANE, 2W WITH MOUNTABLE MEDIAN
701701-08	URBAN LANE CLOSURE, MULTILANE INTERSECTION
701901-02	TRAFFIC CONTROL DEVICES
720001-01	SIGN PANEL MOUNTING DETAILS
857001-01	STANDARD PHASE DESIGNATION DIAGRAMS AND PHASE SEQUENCES
862001-01	UNINTERRUPTABLE POWER SUPPLY (UPS)
880006-01	TRAFFIC SIGNAL MOUNTING DETAILS

**VARIOUS LOCATIONS IN SOUTH DUPAGE COUNTY
LIGHT EMITTING DIODE (LED) INSTALLATION**

**SECTION 2012-084TS
DUPAGE COUNTY
C-91-148-13**



DUPAGE COUNTY
LOCATION MAP
SEE SHEET NO. 3



FULL SIZE PLANS HAVE BEEN PREPARED USING STANDARD ENGINEERING SCALES. REDUCED SIZED PLANS WILL NOT CONFORM TO STANDARD SCALES. IN MAKING MEASUREMENTS ON REDUCED PLANS, THE ABOVE SCALES MAY BE USED.

J.U.L.I.E.
JOINT UTILITY LOCATING INFORMATION FOR EXCAVATORS
1-800-892-0123
OR 811

PROJECT ENGINEER: SUDUD MAHMOUD
PROJECT MANAGER: DARYLE DREW
CONTRACT NO. 60W02

BRUCE P. TALBOT
062-046494
REGISTERED PROFESSIONAL ENGINEER OF ILLINOIS
Bruce P. Talbot DATE: 3/27/13
Expires 11-30-13

STATE OF ILLINOIS
DEPARTMENT OF TRANSPORTATION
DIVISION OF HIGHWAYS
SUBMITTED March 28 2013
John Forthner
DEPUTY DIRECTOR OF HIGHWAYS, REGION ENGINEER
May 10 2013
John D. Baranzelli P.E.
acting ENGINEER OF DESIGN AND ENVIRONMENT
May 10 2013
Omer Osman P.E.
DIRECTOR OF HIGHWAYS, CHIEF ENGINEER

PREPARED BY:
CEMCON, Ltd.
Consulting Engineers, Land Surveyors & Planners
2280 White Oak Circle, Suite 100
Aurora, Illinois 60504-9875
Ph: 630.662.2100 Fax: 630.862.2199
E-Mail: cadd@cemcon.com Website: www.cemcon.com

**PRINTED BY THE AUTHORITY
OF THE STATE OF ILLINOIS**

Rev. 6-3-13

BUREAU OF TRAFFIC, DISTRICT ONE: STEPHEN TRAVIA / SUDUD MAHMOUD (847) 705-4420

INDEX OF SHEETS

- 1 COVER SHEET
- 2 INDEX OF SHEETS
- 3 LOCATION MAP
- 4-9 SUMMARY OF QUANTITIES
- 10-15 DISTRICT 1 STANDARD TRAFFIC SIGNAL DESIGN DETAILS

PAGE	TS#	INTERSECTION NAME
16	6325	IL ROUTE 56 AT EOLA RD.
17	6350	IL ROUTE 56 AT WOODCREEK DR./LLOYD AVE.
18	6352	IL ROUTE 56 AT ESPLANADE DR./HOME DEPOT ENT.
19	6275	IL ROUTE 56 AT FINLEY RD.
20	11410	IL ROUTE 56 AT DOWNERS DR.
21	6050	US ROUTE 34 AT MONTGOMERY RD.
22	6048	US ROUTE 34 AT LONG GROVE RD.
23	6047	US ROUTE 34 AT 75TH ST.
24	6046	US ROUTE 34 AT COMMONS DR.
25	12360	US ROUTE 34 AT TRADE ST. (AURORA MARKET PL.)
26	20910	US ROUTE 34 AT FOX RIVER COMMONS S.C.
27	9526	US ROUTE 34 AT FORT HILL DR.
28	9549	US ROUTE 34 AT RICKERT DR.
29	9551	US ROUTE 34 AT FELDOT LN.
30	9520	US ROUTE 34 AT AURORA AVE.
31	9552	US ROUTE 34 AT JEFFERSON ST
32	27140	US ROUTE 34 AT NORTH AURORA RD./RAYMOND DR.
33	9567	US ROUTE 34 AT RIVER RD.
34	9507	US ROUTE 34 AT 5TH AVE. (FIRE STATION)
35	9565	US ROUTE 34 AT ROYAL ST GEORGE DR.
36	9524	US ROUTE 34 AT BENEDETTI DR.
37	9505	US ROUTE 34 AT MILL ST.
38	9570	US ROUTE 34 AT WASHINGTON ST. (NAPERVILLE)
39	9555	US ROUTE 34 AT LOOMIS ST.
40	9495	US ROUTE 34 AT IROQUOIS AVE.
41	10555	US ROUTE 34 AT NAPERVILLE-WHEATON RD.
42	9605	US ROUTE 34 AT NAPER BLVD./NAPERVILLE RD.
43	11840	US ROUTE 34 AT OLD TAVERN RD.
44	11835	US ROUTE 34 AT INDIANA/WESTERN AVE
45	11830	US ROUTE 34 AT YACKLEY AVE.
46	11825	US ROUTE 34 AT SCHWARTZ AVE.
47	7855	US ROUTE 34 AT MAIN ST. (LISLE)
48	21700	US ROUTE 34 AT CHELSEA AVE.
49	12421	US ROUTE 34 AT I-355 WEST RAMPS
50	12420	US ROUTE 34 AT I-355 EAST RAMPS
51	6120	US ROUTE 34 AT CROSS ST.
52	6125	US ROUTE 34 AT BELMONT/ RD.FINLEY RD.
53	11420	US ROUTE 34 AT SARATOGA AVE.
54	11425	US ROUTE 34 AT MAIN ST. (DOWNERS GROVE)
55	8370	US ROUTE 34 AT FAIRVIEW AVE.
56	21830	US ROUTE 34 AT DOWNERS PLAZA
57	8830	US ROUTE 34 AT WASHINGTON ST. (WESTMONT)
58	6095	US ROUTE 34 AT CASS AVE.
59	10910	US ROUTE 34 AT WARWICK S.C./JEWEL ENT.
60	11675	US ROUTE 34 AT BLACKHAWK DR.
61	6135	US ROUTE 34 AT OAKWOOD DR.
62	6110	US ROUTE 34 AT IL 83 WEST RAMPS
63	6115	US ROUTE 34 AT IL 83 EAST RAMPS
64	6130	US ROUTE 34 AT MADISON ST.
65	6118	US ROUTE 34 AT YORK RD.
66	6116	US ROUTE 34 AT SALT CREEK LN./OAK ST.
67	20635	ILLINOIS ROUTE 59 AT FOX VALLEY S.C. N. ENT.
68	6089	ILLINOIS ROUTE 59 AT MC COY DR./FOX RIVER COMMONS
69	12310	ILLINOIS ROUTE 59 AT AUDREY AVE./AURORA MARKET PL.
70	6360	ILLINOIS ROUTE 59 AT 75TH ST.
71	6362	ILLINOIS ROUTE 59 AT BEEBE DR./COSTCO ENT.
72	11970	ILLINOIS ROUTE 59 AT 83RD ST./MONTGOMERY RD.
73	6092	ILLINOIS ROUTE 59 AT 87TH ST./WHITE EAGLE CLUB
74	11665	ILLINOIS ROUTE 53 AT WARRENVILLE RD.
75	11680	ILLINOIS ROUTE 53 AT SOUTHPORT AVE./US 34 N. RAMP
76	11685	ILLINOIS ROUTE 53 AT US 34 S. RAMP
77	11670	ILLINOIS ROUTE 53 AT BURLINGTON AVE.
78	11660	ILLINOIS ROUTE 53 AT SHORT ST.
79	11655	ILLINOIS ROUTE 53 AT MAIN ST. (LISLE)
80	7830	ILLINOIS ROUTE 53 AT MAPLE AVE.
81	6250	ILLINOIS ROUTE 53 AT 59TH ST./FOUR LAKES AVE.
82	6240	ILLINOIS ROUTE 53 AT SUMMERHILL DR.
83	6255	ILLINOIS ROUTE 53 AT WOODRIDGE DR.
84	6256	ILLINOIS ROUTE 53 AT HIGH TRAIL/SEVEN BRIDGES DR.
85	6225	ILLINOIS ROUTE 53 AT HOBSON RD.
86	6220	ILLINOIS ROUTE 53 AT 75TH ST.
87	6245	ILLINOIS ROUTE 53 AT 83RD ST.
87A	0555	ILLINOIS ROUTE 83 AT 31ST STREET
87B	5975	CASS AVENUE AT I-55 N. FRONTAGE ROAD

- 88 TRAFFIC CONTROL AND PROTECTION FOR SIDE ROADS, INTERSECTIONS AND DRIVEWAYS (TC-10)
- 89 TRAFFIC CONTROL AND PROTECTION AT TURN BAYS (TO REMAIN OPEN TO TRAFFIC) (TC-14)

GENERAL NOTES:

THE CONTRACTOR SHALL CONTACT THE TRAFFIC CONTROL SUPERVISOR AT (847) 705-4470 72 HOURS IN ADVANCE OF BEGINNING WORK.

IT SHALL BE THE CONTRACTOR'S RESPONSIBILITY TO VERIFY ALL DIMENSIONS AND CONDITIONS EXISTING IN THE FIELD PRIOR TO ORDERING MATERIALS AND BEGINNING CONSTRUCTION. THIS SHALL INCLUDE LOCATING THE MAST ARM FOUNDATIONS AND VERIFYING THE MAST ARMS LENGTHS.

THE EXACT LOCATION OF ALL UTILITIES SHALL BE FIELD VERIFIED BY THE CONTRACTOR BEFORE ORDERING ANY MATERIALS AND STARTING ANY WORK. FOR LOCATIONS OF UTILITIES, LOCALLY OWNED EQUIPMENT, LEASED ENFORCEMENT CAMERA SYSTEM FACILITIES AND IDOT UNDERGROUND FACILITIES, CONTACT THE LOCAL COUNTIES, MUNICIPALITIES AND IDOT FOR LOCATES. THE CONTRACTOR SHALL CALL "JULIE" AT (800) 892-0123 OR 811, IN THE CITY OF CHICAGO CONTACT DIGGER AT (312) 744-7000 FOR FIELD LOCATIONS OF BURIED UTILITIES (48 HOURS NOTIFICATION REQUIRED).

IF THIS CONTRACT REQUIRES THE SERVICES OF AN ELECTRICAL CONTRACTOR, THE CONTRACTOR SHALL BE RESPONSIBLE AT HIS/HER OWN EXPENSE FOR LOCATING EXISTING IDOT ELECTRICAL FACILITIES PRIOR TO PERFORMING ANY WORK. IF THIS CONTRACT DOES NOT REQUIRE THE SERVICES OF AN ELECTRICAL CONTRACTOR, THE CONTRACTOR MAY REQUEST ONE FREE LOCATE FOR EXISTING IDOT ELECTRICAL FACILITIES FROM THE DISTRICT ONE ELECTRICAL MAINTENANCE CONTRACTOR PRIOR TO THE START OF ANY WORK. ADDITIONAL REQUESTS MAY BE AT THE EXPENSE OF THE CONTRACTOR. THE LOCATION OF UNDERGROUND TRAFFIC FACILITIES DOES NOT RELIEVE THE CONTRACTOR OF THEIR RESPONSIBILITY TO REPAIR ANY FACILITIES DAMAGED DURING CONSTRUCTION AT THEIR EXPENSE.

THE CONTRACTOR SHALL CHECK THE PROPOSED TRAFFIC SIGNAL EQUIPMENT LOCATIONS FOR OVERHEAD UTILITY CONFLICTS. THE CONTRACTOR SHALL COORDINATE ANY CONFLICTS WITH THE UTILITY COMPANIES AND THE RESIDENT ENGINEER BEFORE ORDERING MATERIALS.

THE CONTRACTOR SHALL COORDINATE CONSTRUCTION ACTIVITIES WITH UTILITY COMPANIES, LOCAL GOVERNMENT AGENCIES AND IDOT.

RESTORATION OF THE TRAFFIC SIGNAL WORK AREA SHALL BE INCLUDED IN THE RELATED PAY ITEM SUCH AS FOUNDATION, CONDUIT, HANDHOLE, ETC., AND NO EXTRA COMPENSATION SHALL BE ALLOWED. ALL ROADWAY SURFACES SUCH AS SHOULDERS, MEDIAN, SIDEWALKS, PAVEMENT, ETC. SHALL BE REPLACED IN KIND. ALL DAMAGE TO MOWED LAWNS SHALL BE REPLACED WITH AN APPROVED SOD, AND ALL DAMAGE TO UNMOWED FIELDS SHALL BE SEEDED IN ACCORDANCE WITH STANDARD SPECIFICATIONS 252 AND 250 RESPECTIVELY.

ANY REFERENCE TO THE STANDARDS THROUGHOUT THE PLANS OR SPECIAL PROVISIONS SHALL BE INTERPRETED AS THE TEST STANDARD OF THE ILLINOIS DEPARTMENT OF TRANSPORTATION.

THE CONTRACTOR SHALL FAMILIARIZE HIMSELF WITH THE PLANS AND SHALL NOTIFY THE ENGINEER AT ONCE OF ANY DISCREPANCIES.

THE CONTRACTOR IS REQUIRED TO ATTEND AN ILLINOIS DEPARTMENT OF TRANSPORTATION (IDOT) PRECONSTRUCTION MEETING AND SHALL INFORM THE IDOT TRAFFIC ENGINEER BEFORE WORK COMMENCES.

THE CONTRACTOR SHALL KEEP PUBLIC STREET PAVEMENTS CLEAN OF DIRT AND DEBRIS.

THE CONTRACTOR SHALL BE RESPONSIBLE IN PROVIDING SAFE AND HEALTHFUL CONDITIONS THROUGHOUT THE CONSTRUCTION OF THE PROPOSED IMPROVEMENTS.

THE CONTRACTOR SHALL BE RESPONSIBLE FOR THE PROTECTION OF ALL UNDERGROUND AND SURFACE UTILITIES EVEN THOUGH THEY MAY NOT BE SHOWN ON THE PLANS. ANY UTILITY THAT IS DAMAGED DURING CONSTRUCTION SHALL BE RESTORED TO A CONDITION EQUAL TO THAT EXISTING BEFORE THE DAMAGE INCURRED. THIS WORK SHALL BE AT THE CONTRACTOR'S EXPENSE.

NEW CONTROLLER CABINETS SHALL BE PLACED SO THAT, a) THE DOORS OPEN AWAY FROM THE CURB OR TRAVELED WAY., b) AND THE TRAFFIC MOVEMENTS AT THE INTERSECTION ARE VISIBLE FROM THE CONTROLLER.

ANY CONTROLLER CABINET WHETHER NEW OR EXISTING TO RECEIVE UPS, WILL HAVE A "L" SHAPED 3 FOOT CONCRETE MAINTENANCE PAD INSTALLED. THE COST OF INSTALLATION OF CONCRETE PAD IS INCIDENTAL TO NEW CONTROLLER AND OR UPS INSTALLATIONS.

PRIOR TO REMOVING ANY TRAFFIC SIGNAL POST SPECIFIED TO BE REPLACED IN THE SAME LOCATION, THE CONTRACTOR SHALL VERIFY THAT THE PATTERN, SPACING, AND CONDITION OF THE EXISTING BOLTS ARE SUITABLE FOR RE-USE WITH A NEW POST. IF THE BOLTS ARE NOT REUSABLE, THEN THE EXISTING POST SHALL REMAIN IN PLACE OR AS DIRECTED BY THE ENGINEER.

CONTRACTOR SHALL REPLACE BROKEN MOUNTING BRACKETS AT ALL RETROFIT SIGNAL HEAD INTERSECTIONS OR AS DIRECTED BY THE ENGINEER. THE COST OF THIS WORK SHALL BE INCLUDED IN THE CORRESPONDING SIGNAL HEAD, LED, RETROFIT PAY ITEM OF THE TYPE AND NUMBER OF SIGNAL HEADS, FACES AND SECTIONS AS SPECIFIED IN THE PLANS.

THE CONTRACTOR SHALL RELOCATE EXISTING SIGN PANELS FROM PAINTED POSTS THAT ARE INDICATED FOR REPLACEMENT TO A NEW POSTS AS SHOWN ON THE PLANS OR AS DIRECTED BY THE ENGINEER. THE COST OF REMOVAL, RELOCATION AND ANY NEW MOUNTING HARDWARE NECESSARY TO COMPLETE THIS WORK SHALL BE INCLUDED IN THE TRAFFIC SIGNAL POST, GALVANIZED STEEL PAY ITEM OF THE LENGTH AS SPECIFIED ON THE PLANS.

DUE TO THE PRESENCE OF A RED LIGHT RUNNING (RLR) CAMERA FOR THE BELOW LISTED LOCATIONS, CONTRACTOR SHALL NOTIFY THE VILLAGE AND RLR CAMERA COMPANY PRIOR TO THE START OF CONSTRUCTION. THE VILLAGE OR THE RLR CAMERA COMPANY SHALL MAKE THE CAMERA INOPERATIVE FOR THE TIME OF CONSTRUCTION. ANY RLR CAMERA EQUIPMENT THAT IS IN CONFLICT WITH THE PROPOSED CONSTRUCTION SHALL BE REMOVED BY ITS RESPECTIVE OWNERS PRIOR TO THE START OF CONSTRUCTION.

RLR CAMERA LOCATION:

TS# 11830 U.S. ROUTE 34 @ YACKLEY AVENUE
TS# 7830 ILLINOIS ROUTE 53 @ MAPLE AVENUE

VILLAGE OF LISLE REDSPEED ILLINOIS
925 BURLINGTON AVENUE 400 EISENHOWER LANE NORTH
LISLE, IL 60532 LOMBARD, IL 60148
630-271-4100 630-317-5720

FILE NAME : MICROST\252105\02-INDEX.DGN	USER NAME : JCC	DESIGNED - BPT	REVISED - 5/28/13
		DRAWN - RDS/JGC	REVISED -
		CHECKED - BPT	REVISED -
		DATE - 03-22-13	REVISED -

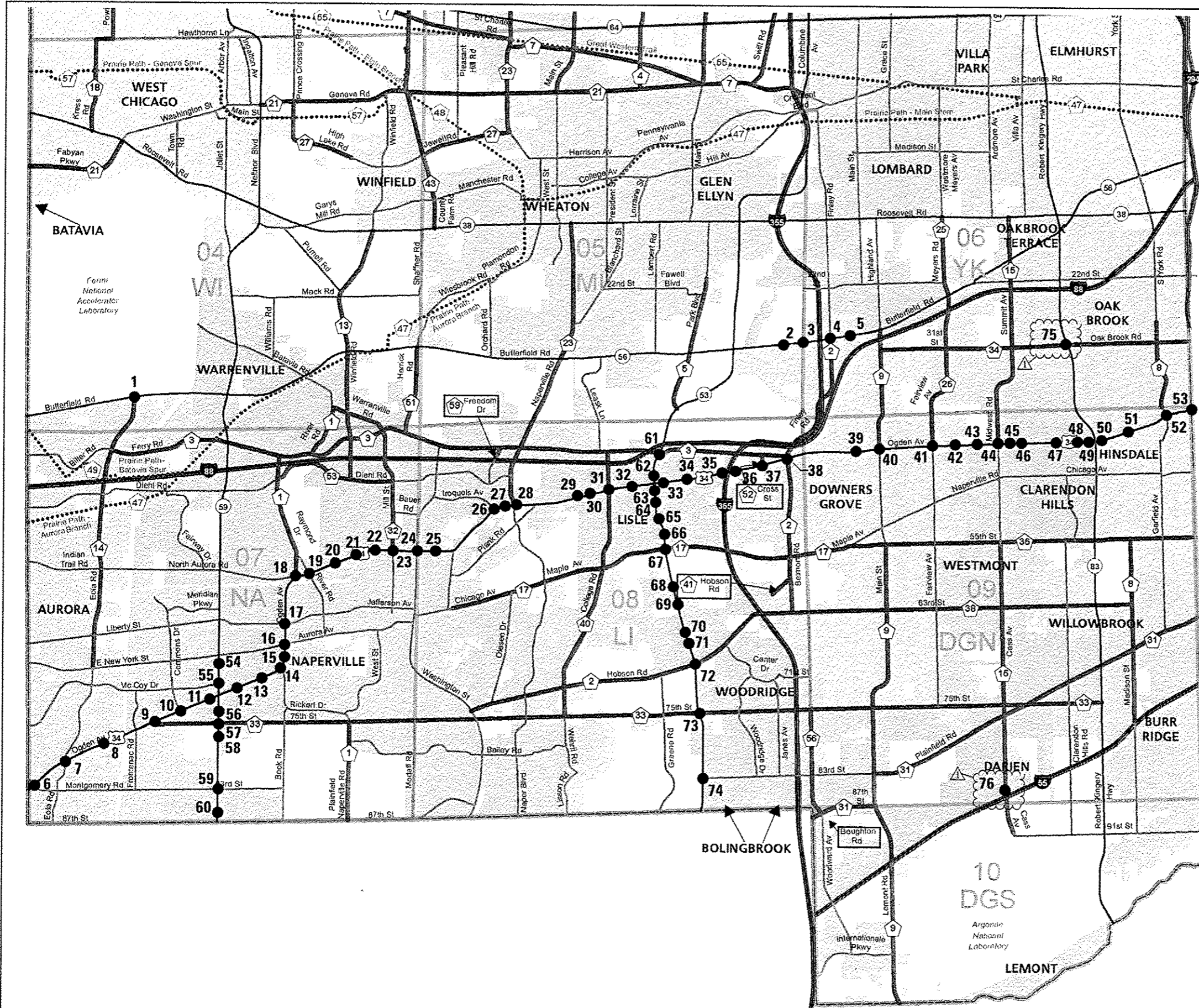
**STATE OF ILLINOIS
DEPARTMENT OF TRANSPORTATION**

INDEX OF SHEETS

SCALE: 1"=20' SHEET NO. OF SHEETS STA. TO STA.

PREPARED BY:
CEMCON, Ltd.
Consulting Engineers, Land Surveyors & Planners
2280 White Oak Circle, Suite 100
Aurora, Illinois 60504-9675
Ph: 630.862.2100 Fax: 630.862.2199
E-Mail: codd@cemcon.com Website: www.cemcon.com

F.A.U. RTE.	SECTION	COUNTY	TOTAL SHEETS	SHEET NO.
VAR.	2012-084TS	DUPAGE	89	2
CONTRACT NO. 60W02				
FED. ROAD DIST. NO. ILLINOIS FED. AID PROJECT				



#	TS#	LOCATION
1	6325	IL ROUTE 56 AT EOLA RD.
2	6350	IL ROUTE 56 AT WOODCREEK DR./LLOYD AVE.
3	6352	IL ROUTE 56 AT ESPLANADE DR./HOME DEPOT ENT.
4	6275	IL ROUTE 56 AT FINLEY DR.
5	11410	IL ROUTE 56 AT DOWNERS DR.
6	6050	US ROUTE 34 AT MONTGOMERY RD.
7	6049	(DELETED)
8	6048	US ROUTE 34 AT LONG GROVE RD.
9	6047	US ROUTE 34 AT 75TH ST.
10	6046	US ROUTE 34 AT COMMONS DR.
11	12360	US ROUTE 34 AT TRADE ST. (AURORA MARKET PL.)
12	20910	US ROUTE 34 AT FOX RIVER COMMONS S.C.
13	9526	US ROUTE 34 AT FORT HILL DR.
14	9549	US ROUTE 34 AT RICKERT DR.
15	9551	US ROUTE 34 AT FELDOTT LN.
16	9520	US ROUTE 34 AT AURORA AVE.
17	9552	US ROUTE 34 AT JEFFERSON ST
18	27140	US ROUTE 34 AT NORTH AURORA RD./RAYMOND DR.
19	9567	US ROUTE 34 AT RIVER RD.
20	9507	US ROUTE 34 AT 5TH AVE. (FIRE STATION)
21	9565	US ROUTE 34 AT ROYAL ST GEORGE DR.
22	9524	US ROUTE 34 AT BENEDETTI DR.
23	9505	US ROUTE 34 AT MILL ST.
24	9570	US ROUTE 34 AT WASHINGTON ST. (NAPERVILLE)
25	9555	US ROUTE 34 AT LOOMIS ST.
26	9495	US ROUTE 34 AT IROQUOIS AVE.
27	10555	US ROUTE 34 AT NAPERVILLE-WHEATON RD.
28	9605	US ROUTE 34 AT NAPER BLVD./NAPERVILLE RD.
29	11840	US ROUTE 34 AT OLD TAVERN RD.
30	11835	US ROUTE 34 AT INDIANA/WESTERN AVE
31	11830	US ROUTE 34 AT YACKLEY AVE.
32	11825	US ROUTE 34 AT SCHWARTZ AVE.
33	7855	US ROUTE 34 AT MAIN ST. (LISLE)
34	21700	US ROUTE 34 AT CHELSEA AVE.
35	12421	US ROUTE 34 AT I-355 WEST RAMP
36	12420	US ROUTE 34 AT I-355 EAST RAMP
37	6120	US ROUTE 34 AT CROSS ST.
38	6125	US ROUTE 34 AT BELMONT/ RD.FINLEY RD.
39	11420	US ROUTE 34 AT SARATOGA AVE.
40	11425	US ROUTE 34 AT MAIN ST. (DOWNERS GROVE)
41	8370	US ROUTE 34 AT FAIRVIEW AVE.
42	21830	US ROUTE 34 AT DOWNERS PLAZA
43	8830	US ROUTE 34 AT WASHINGTON ST. (WESTMONT)
44	6095	US ROUTE 34 AT CASS AVE.
45	10910	US ROUTE 34 AT WARWICK S.C./JEWEL ENT.
46	11675	US ROUTE 34 AT BLACKHAWK DR.
47	6135	US ROUTE 34 AT OAKWOOD DR.
48	6100	(DELETED)
49	6110	US ROUTE 34 AT IL 83 WEST RAMP
50	6115	US ROUTE 34 AT IL 83 EAST RAMP
51	6130	US ROUTE 34 AT MADISON ST.
52	6118	US ROUTE 34 AT YORK RD.
53	6116	US ROUTE 34 AT SALT CREEK LN./OAK ST.
54	20635	ILLINOIS ROUTE 59 AT FOX VALLEY S.C. N. ENT.
55	6089	ILLINOIS ROUTE 59 AT MC COY DR./FOX RIVER COMMONS
56	12310	ILLINOIS ROUTE 59 AT AUDREY AVE./AURORA MARKET PL.
57	6360	ILLINOIS ROUTE 59 AT 75TH ST.
58	6362	ILLINOIS ROUTE 59 AT BEEBE DR./COSTCO ENT.
59	11970	ILLINOIS ROUTE 59 AT 83RD ST./MONTGOMERY RD.
60	6092	ILLINOIS ROUTE 59 AT 87TH ST./WHITE EAGLE CLUB
61	11665	ILLINOIS ROUTE 53 AT WARRENVILLE RD.
62	11680	ILLINOIS ROUTE 53 AT SOUTHPORT AVE./US 34 N. RAMP
63	11685	ILLINOIS ROUTE 53 AT US 34 S. RAMP
64	11670	ILLINOIS ROUTE 53 AT BURLINGTON AVE.
65	11660	ILLINOIS ROUTE 53 AT SHORT ST.
66	11655	ILLINOIS ROUTE 53 AT MAIN ST. (LISLE)
67	7830	ILLINOIS ROUTE 53 AT MAPLE AVE.
68	6250	ILLINOIS ROUTE 53 AT 59TH ST./FOUR LAKES AVE.
69	6240	ILLINOIS ROUTE 53 AT SUMMERHILL DR.
70	6255	ILLINOIS ROUTE 53 AT WOODRIDGE DR.
71	6256	ILLINOIS ROUTE 53 AT HIGH TRAIL/SEVEN BRIDGES DR.
72	6225	ILLINOIS ROUTE 53 AT HOBSON RD.
73	6220	ILLINOIS ROUTE 53 AT 75TH ST.
74	6245	ILLINOIS ROUTE 53 AT 83RD ST.
75	6555	ILLINOIS ROUTE 83 AT 31ST STREET
76	5975	CASS AVENUE AT I-55 N. FRONTAGE ROAD

FILE NAME MICROSTV321105\B3-LOC MAP.DGN	USER NAME JGC	DESIGNED BPT	REVISED 5/28/13
PLOT SCALE NOT TO SCALE	CHECKED BPT	DRAWN RDS/JGC	REVISED
PLOT DATE X	DATE 03-22-13		REVISED

**STATE OF ILLINOIS
DEPARTMENT OF TRANSPORTATION**

LOCATION MAP

SCALE: 1"=20' SHEET NO. OF SHEETS STA. TO STA.


PREPARED BY:
CEMCON, Ltd.
Consulting Engineers, Land Surveyors & Planners
2280 White Oak Circle, Suite 100
Aurora, Illinois 60504-9679
Ph: 630.862.2100 Fax: 630.862.2199
E-Mail: oadd@cemcon.com Website: www.cemcon.com

F.A.U. RTE.	SECTION	COUNTY	TOTAL SHEETS	SHEET NO.
VAR.	2012-084TS		89	3
CONTRACT NO. 60W02			FED. ROAD DIST. NO. ILLINOIS FED. AID PROJECT	

SUMMARY OF QUANTITIES HEADING LEGEND
FUNDING PARTICIPATION (CONT.)

LOCATION #	COLUMN #	TS #	INTERSECTION	STATE	DUPAGE COUNTY	AURORA	DOWNERS GROVE	HINSDALE	LISLE	NAPERVILLE	WESTMONT	WOODRIDGE	UNIVERSITIES RESEARCH ASSN	MILTON TOWNSHIP	INLAND COMMERCIAL PROPERTY MGMT	FOX RIVER COMMONS SHOPPING CTR	JEWEL TEA COMPANY	BONNIE MGMT CORP	MARRIOTT INTERNATIONAL INC	DOWNERS PLAZA	
59	15	11970	IL 59 AT 83RD ST/MONTGOMERY RD	95.0%		2.5%				2.5%											
60	15	6092	IL 59 AT 87TH ST/ WHITE EAGLE	95.0%		2.5%				2.5%											
61	9	11665	IL 53 AT WARRENVILLE RD	95.0%	5.0%																
62	2	11680	IL 53 AT SOUTHPORT/US 34 N RAMP	97.5%					2.5%												
63	1	11685	IL 53 AT US 34 SOUTH RAMP	100.0%																	
64	18	11670	IL 53 AT BURLINGTON AVE	95.0%					5.0%												
65	18	11660	IL 53 AT SHORT STREET	95.0%					5.0%												
66	5	11655	IL 53 AT MAIN ST (LISLE)	96.7%					3.3%												
67	9	7830	IL 53 AT MAPLE AVE	95.0%	5.0%																
68	18	6250	IL 53 AT 59TH ST/FOUR LAKES	95.0%					5.0%												
69	27	6240	IL 53 AT SUMMERHILL DR	95.0%																	
70	22	6255	IL 53 AT WOODRIDGE DR	95.0%								5.0%								5.0%	
71	22	6256	IL 53 AT HIGH TRAIL/SEVEN BRIDGES DR	95.0%								5.0%									
72	9	6225	IL 53 AT HOBSON ROAD	95.0%	5.0%																
73	9	6220	IL 53 AT 75TH STREET	95.0%	5.0%																
74	8	6245	IL 53 AT 83RD STREET	96.7%								3.3%									
75	1	0555	IL 53 AT 31ST STREET	100.0%																	
76	9	5975	CASS AVE AT I-55 N. FRONTAGE ROAD	95.0%	5.0%																



FILE NAME - MICROST\352185\ 05-SUMMARY.DGN	USER NAME = JCC	DESIGNED - BPT	REVISED -  5/28/13
	PLOT SCALE = NOT TO SCALE	DRAWN - RDS/JCC	REVISED -
	PLOT DATE = X	CHECKED - BPT	REVISED -
		DATE - 03-22-13	REVISED -

**STATE OF ILLINOIS
DEPARTMENT OF TRANSPORTATION**

**SUMMARY OF QUANTITIES
(SHEET 2 OF 6)**

SCALE: 1"=20' SHEET NO. OF SHEETS STA. TO STA.

PREPARED BY:
CEMCON, Ltd.
Consulting Engineers, Land Surveyors & Planners
2230 White Oak Circle, Suite 100
Aurora, Illinois 60504-9675
Ph: 630.862.2100 Fax: 630.862.2199
E-Mail: oedd@cemcon.com Website: www.cemcon.com

F.A.U. RTE.	SECTION	COUNTY	TOTAL SHEETS	SHEET NO.
VAR.	2012-084TS	DUPAGE	89	5
FED. ROAD DIST. NO. [ILLINOIS] FED. AID PROJECT			CONTRACT NO. 60W02	

CODE NUMBER	ITEM	UNIT	TOTAL QUANTITY	CONSTRUCTION CODE 0021																										
				TRAFFIC SIGNAL																										
				URBAN																										
				1	2	3	4	5	6	7	8	9	10	11	12	13	14	15	16	17	18	19	20	21	22	23	24	25	26	27
67000400	ENGINEER'S FIELD OFFICE, TYPE A	CAL MO	6	6																										
67100100	MOBILIZATION	L SUM	1	1																										
70102635	TRAFFIC CONTROL AND PROTECTION, STANDARD 701701	L SUM	1	1																										
85000200	MAINTENANCE OF EXISTING TRAFFIC SIGNAL INSTALLATION	EACH	74	7	1	1	1	2	1	1	1	8	3	2	1	3	1	3	5	3	5	13	1	2	2	1	1	3	1	1
86400100	TRANSCEIVER - FIBER OPTIC	EACH	5									2						2			1									
87502440	TRAFFIC SIGNAL POST, GALVANIZED STEEL 10 FT.	EACH	1												1															
87502480	TRAFFIC SIGNAL POST, GALVANIZED STEEL 14 FT.	EACH	42	15	3		4		3	1						1	4	1	4			3		2				1		
87502490	TRAFFIC SIGNAL POST, GALVANIZED STEEL 15 FT.	EACH	1	1																										
87502500	TRAFFIC SIGNAL POST, GALVANIZED STEEL 16 FT.	EACH	58	4	2		1		1	3	6	4	4		4	1	2	2	16	3		3							2	
87502520	TRAFFIC SIGNAL POST, GALVANIZED STEEL 18 FT.	EACH	6				3												1			1		1						
88001640	SIGNAL HEAD, LED, 3-FACE, 2-SECTION, 1-4 SECTION, BRACKET MOUNTED	EACH	2	2																										
88030020	SIGNAL HEAD, LED, 1-FACE, 3-SECTION, MAST-ARM MOUNTED	EACH	99	29	3	3	4		1	3	4	4	2	4	7	4		10	1	10	1		1		8				4	
88030050	SIGNAL HEAD, LED, 1-FACE, 3-SECTION, BRACKET MOUNTED	EACH	74	17	3	3	5		3	2	2	2	5					8	5	6	1		10		2				2	
88030070	SIGNAL HEAD, LED, 1-FACE, 4-SECTION, BRACKET MOUNTED	EACH	1	1																										
88030080	SIGNAL HEAD, LED, 1-FACE, 4-SECTION, MAST ARM MOUNTED	EACH	1	1																										
88030100	SIGNAL HEAD, LED, 1-FACE, 5-SECTION, BRACKET MOUNTED	EACH	45	1	2	1			1	3	2	8	4		3		3		10			5							2	

Rev. 6-3-13

PREPARED BY:
CEMCON, Ltd.
 Consulting Engineers, Land Surveyors & Planners
 2280 White Oak Circle, Suite 100
 Aurora, Illinois 60504-9675
 PH: 630.882.2100 FAX: 630.882.2199
 E-Mail: codd@cemcon.com Website: www.cemcon.com

FILE NAME * MICROST\352185\06-SUMMARY.DGN	USER NAME * JGC	DESIGNED - BPT	REVISED -
		DRAWN - RDS/JGC	REVISED -
		CHECKED - BPT	REVISED -
		DATE - 03-22-13	REVISED -

STATE OF ILLINOIS
 DEPARTMENT OF TRANSPORTATION

SUMMARY OF QUANTITIES
 (SHEET 3 OF 6)

SCALE: 1"=20' SHEET NO. OF SHEETS STA. TO STA.

F.A.U. R.T.E.	SECTION	COUNTY	TOTAL SHEETS	SHEET NO.
VAR.	2012-084TS	DUPAGE	89	6
CONTRACT NO. 60W02			ILLINOIS FED. AID PROJECT	

CODE NUMBER	ITEM	UNIT	TOTAL QUANTITY	CONSTRUCTION CODE 0021																										
				TRAFFIC SIGNAL																										
				URBAN																										
				1	2	3	4	5	6	7	8	9	10	11	12	13	14	15	16	17	18	19	20	21	22	23	24	25	26	27
88030110	SIGNAL HEAD, LED, 1-FACE, 5-SECTION, MAST-ARM MOUNTED	EACH	60	3	2		1	2		1	1	8	8	4	3	2		3	3	16	1		5	1			2			
88030210	SIGNAL HEAD, LED, 2-FACE, 3-SECTION, BRACKET MOUNTED	EACH	25	4			1	3		2	2			1			6	2	2					2						
88030220	SIGNAL HEAD, LED, 2-FACE, 5-SECTION, BRACKET MOUNTED	EACH	4								2	1		1																
88030230	SIGNAL HEAD, LED, 2-FACE, 1-3 SECTION, 1-4 SECTION, BRACKET MOUNTED	EACH	4	4																										
88030240	SIGNAL HEAD, LED, 2-FACE, 1-3 SECTION, 1-5 SECTION, BRACKET MOUNTED	EACH	23	5				2			2			3	1		2	1	6	1										
88030310	SIGNAL HEAD, LED, 3-FACE, 3-SECTION, BRACKET MOUNTED	EACH	1																						1					
88030330	SIGNAL HEAD, LED, 3-FACE, 2-3 SECTION, 1-5 SECTION BRACKET MOUNTED	EACH	5	1														1	2					1						
88102717	PEDESTRIAN SIGNAL HEAD, LED, 1-FACE, BRACKET MOUNTED WITH COUNTDOWN TIMER	EACH	118	4	2	2	2	4	2		2	14	8	4	4	10		4	14	8	12	2	4	4		6	2	2		
88102747	PEDESTRIAN SIGNAL HEAD, LED, 2-FACE, BRACKET MOUNTED WITH COUNTDOWN TIMER	EACH	51	2								1	6	2	1			2	2	8	21		5	1						
88200210	TRAFFIC SIGNAL BACKPLATE, LOUVERED, ALUMINUM	EACH	160	33	5		4	6		2	4	12	10	8	10	6		13	4	26	2		6	9			6			
88500100	INDUCTIVE LOOP DETECTOR	EACH	69									25			7	26					11									
88800100	PEDESTRIAN PUSH-BUTTON	EACH	109	4	2	2	2	4	2		2	15	8		8			10	6	24	2	6	2			6	2	2		
89500100	RELOCATE EXISTING SIGNAL HEAD	EACH	13									8						1		4										
89500200	RELOCATE EXISTING PEDESTRIAN SIGNAL HEAD	EACH	1									1																		

Rev. 6-3-13

FILE NAME *	USER NAME * JGC	DESIGNED - BPT	REVISED -
\\MICROST\352105\07-SUMMARY.DGN		DRAWN - RDS/JGC	REVISED -
PLOT SCALE * NOT TO SCALE	CHECKED - BPT	DATE - 03-22-13	REVISED -
PLOT DATE * X			

STATE OF ILLINOIS
DEPARTMENT OF TRANSPORTATION

SUMMARY OF QUANTITIES (SHEET 4 OF 6)			
SCALE: 1"=20'	SHEET NO. OF SHEETS	STA.	TO STA.

PREPARED BY:
CEMCON, Ltd.
Consulting Engineers, Land Surveyors & Planners
2800 White Oak Circle, Suite 100
Aurora, Illinois 60504-9675
Ph: 630.862.2100 Fax: 630.862.2199
E-Mail: cadd@cemcon.com Website: www.cemcon.com

F.A.U. RTE.	SECTION	COUNTY	TOTAL SHEETS	SHEET NO.
VAR.	2012-084TS	DUPAGE	89	7
FED. ROAD DIST. NO.			ILLINOIS FED. AID PROJECT	
			CONTRACT NO. 60W02	

CODE NUMBER	ITEM	UNIT	TOTAL QUANTITY	1	2	3	4	5	6	7	8	9	10	11	12	13	14	15	16	17	18	19	20	21	22	23	24	25	26	27	
				CONSTRUCTION CODE 0021																											
				TRAFFIC SIGNAL																											
				URBAN																											
89500400	RELOCATE EXISTING PEDESTRIAN PUSH-BUTTON	EACH	1									1																			
89501400	RELOCATE EXISTING EMERGENCY VEHICLE PRIORITY SYSTEM, DETECTOR UNIT	EACH	5					3												1				1							
89501410	RELOCATE EXISTING EMERGENCY VEHICLE PRIORITY SYSTEM, PHASING UNIT	EACH	5									2							2			1									
89502210	MODIFY EXISTING CONTROLLER CABINET	EACH	467	1	1	1	2	1	1	1	6	1	2	1	3	3	3	3	6	12	1	2	2	1	2	1	1	1	1	1	
89502350	REMOVE AND REINSTALL ELECTRIC CABLE FROM CONDUIT	FOOT	178																	178											
89502375	REMOVE EXISTING TRAFFIC SIGNAL EQUIPMENT	EACH	677	1	1	1	2	1	1	1	6	3	2	1	3	1	3	5	3	6	9	1	2	2	1	1	1	1	1	1	
X8570226	FULL-ACTUATED CONTROLLER AND TYPE IV CABINET, SPECIAL	EACH	5									1			1		2			1											
X8570231	FULL-ACTUATED CONTROLLER AND TYPE V CABINET, SPECIAL	EACH	1									1																			
X8600105	MASTER CONTROLLER (SPECIAL)	EACH	1									1																			
X8620200	UNINTERRUPTABLE POWER SUPPLY, SPECIAL	EACH	727	1	1	1	2	1	1	1	6	3	2	1	3	1	3	5	3	6	13	1	2	2	1	2	1	1	1	1	
X8880015	PEDESTRIAN PUSH-BUTTON, NON-LATCHING	EACH	80	4										10	6	3	6	7	9	11	17		4	3							
X8803040	SIGNAL HEAD, LED, 2-FACE, 1-3 SECTION, 1-5 SECTION, BRACKET MOUNTED, RETROFIT	EACH	19	2							4				2		4				2							3	2		
X8803050	SIGNAL HEAD, LED, 3-FACE, 1-3 SECTION, 2-5 SECTION, BRACKET MOUNTED, RETROFIT	EACH	1								1																				
X8803060	SIGNAL HEAD, LED, 3-FACE, 3-SECTION, BRACKET MOUNTED, RETROFIT	EACH	2															2													

Rev. 6-3-13

FILE NAME *	USER NAME * JGC	DESIGNED - BPT	REVISED -
\\MICROST\352105\08-SUMMARY.DGN		DRAWN - RDS/JGC	REVISED -
		CHECKED - BPT	REVISED -
		DATE - 03-22-13	REVISED -

STATE OF ILLINOIS
DEPARTMENT OF TRANSPORTATION

SUMMARY OF QUANTITIES
(SHEET 5 OF 6)

SCALE: 1"=20' SHEET NO. OF SHEETS STA. TO STA.

PREPARED BY:
CEMCON, Ltd.
Consulting Engineers, Land Surveyors & Planners
2280 White Oak Circle, Suite 100
Aurora, Illinois 60504-9675
Ph: 630.862.2100 Fax: 630.862.2199
E-Mail: cadd@cemcon.com Website: www.cemcon.com

F.A.U. RTE.	SECTION	COUNTY	TOTAL SHEETS	SHEET NO.
VAR.	2012-084TS	DUPAGE	89	6
CONTRACT NO. 60W02				

FED. ROAD DIST. NO. [ILLINOIS] FED. AID PROJECT

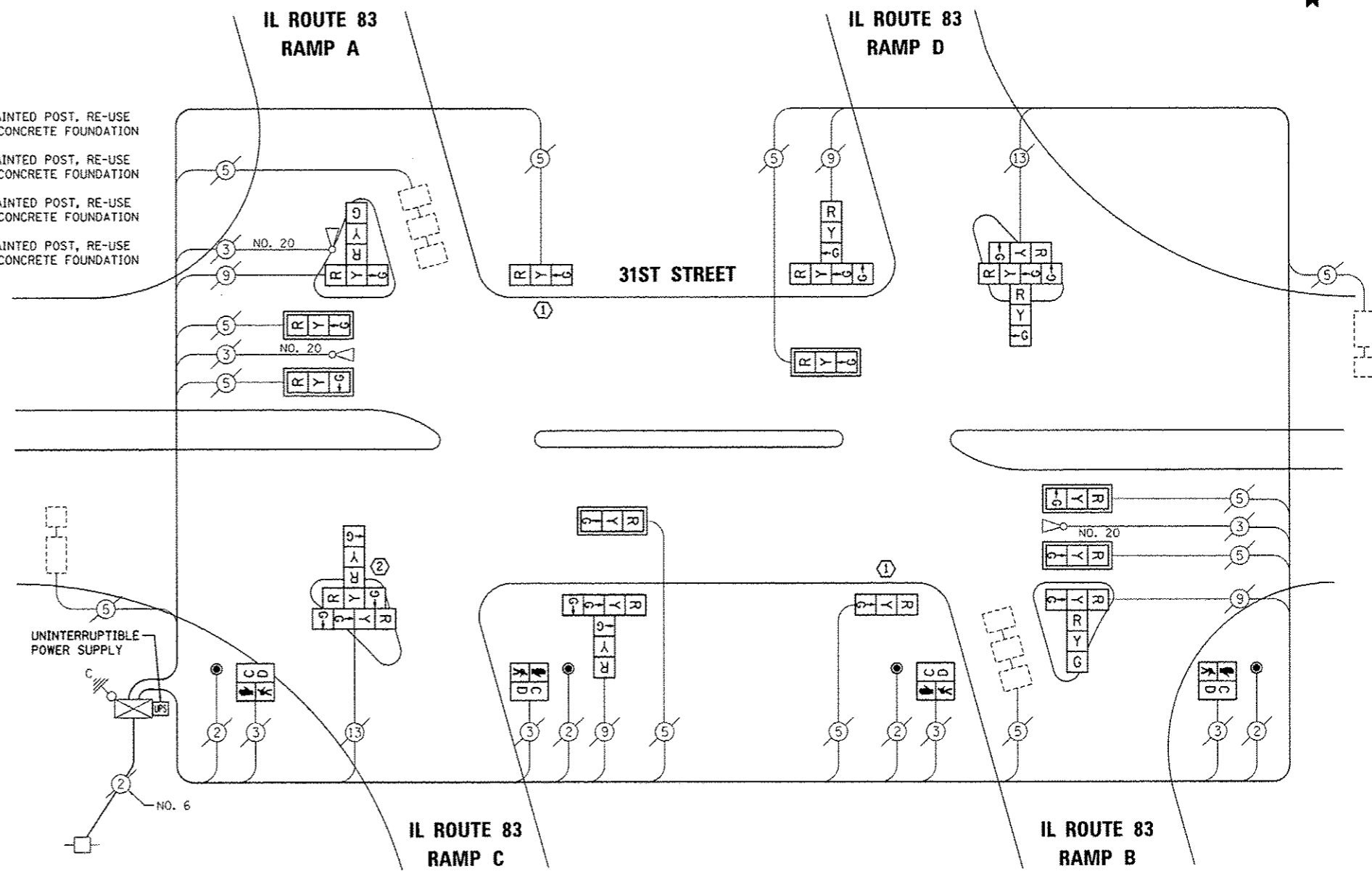
REMOVAL OF EXISTING TRAFFIC SIGNAL EQUIPMENT

THE FOLLOWING ITEMS SHALL BE REMOVED BY THE CONTRACTOR AND SHALL BE DISPOSED OF BY THEM OUTSIDE THE RIGHT-OF-WAY AT THEIR EXPENSE. THE SALVAGE VALUE OF THE REMOVED EQUIPMENT SHALL BE REFLECTED IN THE CONTRACT BID PRICE.

- 3 EACH TRAFFIC SIGNAL POST
- 18 EACH SIGNAL HEAD, 3-SECTION
- 4 EACH SIGNAL HEAD, 4-SECTION
- 6 EACH TRAFFIC SIGNAL BACKPLATE
- 4 EACH PEDESTRIAN SIGNAL HEAD
- 4 EACH PEDESTRIAN PUSH-BUTTON



- ① REPLACE 14 FT. PAINTED POST, RE-USE EXISTING TYPE A CONCRETE FOUNDATION
- ② REPLACE 15 FT. PAINTED POST, RE-USE EXISTING TYPE A CONCRETE FOUNDATION
- ③ REPLACE 16 FT. PAINTED POST, RE-USE EXISTING TYPE A CONCRETE FOUNDATION
- ④ REPLACE 18 FT. PAINTED POST, RE-USE EXISTING TYPE A CONCRETE FOUNDATION



SCHEDULE OF QUANTITIES

ITEM	UNIT	QUANTITY
MAINTENANCE OF EXISTING TRAFFIC SIGNAL INSTALLATION	EACH	1
TRAFFIC SIGNAL POST, GALVANIZED STEEL 14 FT.	EACH	2
TRAFFIC SIGNAL POST, GALVANIZED STEEL 15 FT.	EACH	1
SIGNAL HEAD, LED, 3-FACE, 2-3 SECTION, 1-4 SECTION, BRACKET MOUNTED	EACH	2
SIGNAL HEAD, LED, 1-FACE, 3-SECTION, MAST-ARM MOUNTED	EACH	6
SIGNAL HEAD, LED, 1-FACE, 3-SECTION, BRACKET MOUNTED	EACH	2
SIGNAL HEAD, LED, 2-FACE, 3-SECTION, BRACKET MOUNTED	EACH	2
SIGNAL HEAD, LED, 2-FACE, 1-3 SECTION, 1-4 SECTION, BRACKET MOUNTED	EACH	2
PEDESTRIAN SIGNAL HEAD, LED, 1-FACE, BRACKET MOUNTED WITH COUNTDOWN TIMER	EACH	4
TRAFFIC SIGNAL BACKPLATE, LOUVERED, ALUMINUM	EACH	6
PEDESTRIAN PUSH-BUTTON	EACH	4
MODIFY EXISTING CONTROLLER CABINET	EACH	1
REMOVE EXISTING TRAFFIC SIGNAL EQUIPMENT	EACH	1
UNINTERRUPTABLE POWER SUPPLY, SPECIAL	EACH	1

CABLE PLAN

NOTE:
THE TRAFFIC SIGNAL CONTROL EQUIPMENT FOR THIS PROJECT SHALL BE "ECONOLITE" TO MATCH THE EXISTING ADJACENT SYSTEM.

I.D.O.T TRAFFIC SIGNAL INSTALLATION ELECTRICAL SERVICE REQUIREMENTS				TOTAL WATTAGE	
TYPE	NO. LAMPS	WATTAGE INCAND. LED	OPERATION		
SIGNAL (RED)	22	135	17	0.50	187
(YELLOW)	22	135	25	0.25	137.5
(GREEN)	26	135	15	0.25	97.5
ARROW		135	12	0.10	
PED. SIGNAL	4	90	25	1.00	100
CONTROLLER	1	100	100	1.00	100
ILLUM. SIGN		84		0.05	
FLASHER		135	25	0.50	
ENERGY COSTS TO: ILLINOIS DEPARTMENT OF TRANSPORTATION 201 WEST CENTER COURT SCHAUMBURG, IL 60196-1096				TOTAL =	622
ENERGY SUPPLY CONTACT: PHONE: X COMPANY: X					
FILE NAME >	USER NAME = JDC	DESIGNED - BPT	REVISED - 5/28/13		
\\MICROST\352185\75-2555.DGN		DRAWN - JGC/RDS	REVISED -		
	PLOT SCALE = NOT TO SCALE	CHECKED - BPT	REVISED -		
	PLOT DATE = X	DATE - 03-22-13	REVISED -		

STATE OF ILLINOIS
DEPARTMENT OF TRANSPORTATION

SCHEDULE OF QUANTITIES, CABLE PLAN,
PHASE DESIGNATION DIAGRAM AND EMERGENCY VEHICLE PREEMPTION
IL ROUTE 83 AT 31ST STREET

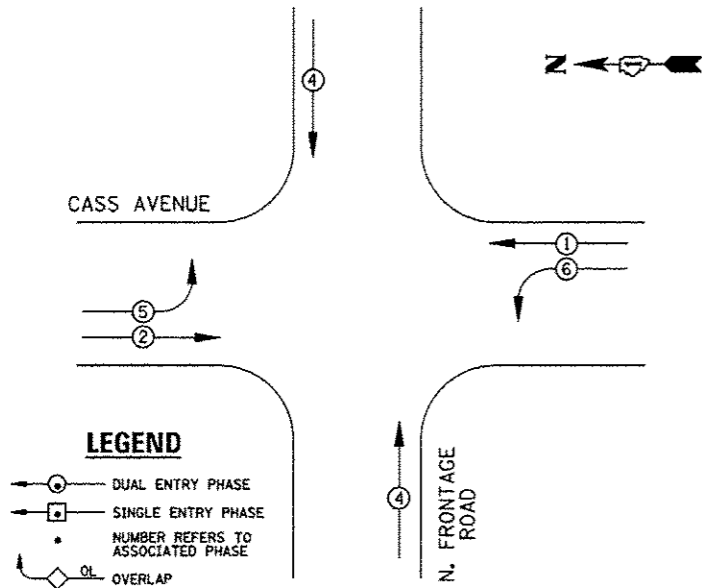
SCALE: N.T.S. SHEET NO. OF SHEETS STA. TO STA.

PREPARED BY:
CEMCON, Ltd.
Consulting Engineers, Land Surveyors & Planners
2280 White Oak Circle, Suite 100
Aurora, Illinois 60504-9675
Ph: 630.862.2100 Fax: 630.862.2199
E-Mail: oadd@cemcon.com Website: www.cemcon.com

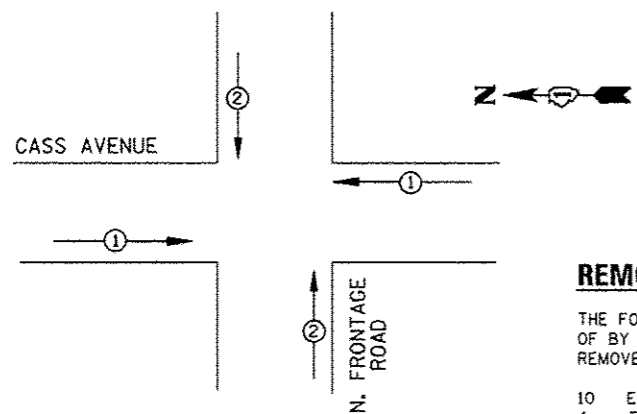
F.A.P. RTE.	SECTION	COUNTY	TOTAL SHEETS	SHEET NO.
VAR.	2012-0B4TS	DU PAGE	89	87A
CONTRACT NO. 60W02				
FED. ROAD DIST. NO. [ILLINOIS] FED. AID PROJECT				

TS* 0555
OAK BROOK

EXISTING CONTROLLER SEQUENCE



EXISTING PHASE DESIGNATION DIAGRAM



EMERGENCY VEHICLE PREEMPTORS		
EMERGENCY VEHICLE PREEMPTOR	1	2
MOVEMENT	← →	↑ ↓

EMERGENCY VEHICLE PREEMPTION SEQUENCE

I.D.O.T TRAFFIC SIGNAL INSTALLATION ELECTRICAL SERVICE REQUIREMENTS					TOTAL
TYPE	NO. LAMPS	WATTAGE (INCAND.)	LED	%OPERATION	WATTAGE
SIGNAL (RED)	14	135	17	0.50	119
(YELLOW)	14	135	25	0.25	87.5
(GREEN)	14	135	15	0.25	52.5
ARROW	8	135	12	0.10	9.6
FED. SIGNAL	0	90	25	1.00	0
CONTROLLER	1	100	100	1.00	100
ILLUM. SIGN		84		0.05	
FLASHER		135	25	0.50	
ENERGY COSTS TO: ILLINOIS DEPARTMENT OF TRANSPORTATION 201 WEST CENTER COURT SCHAUMBURG, IL 60196-1096					TOTAL = 368.6
ENERGY SUPPLY CONTACT: _____					
PHONE: _____					
COMPANY: _____					

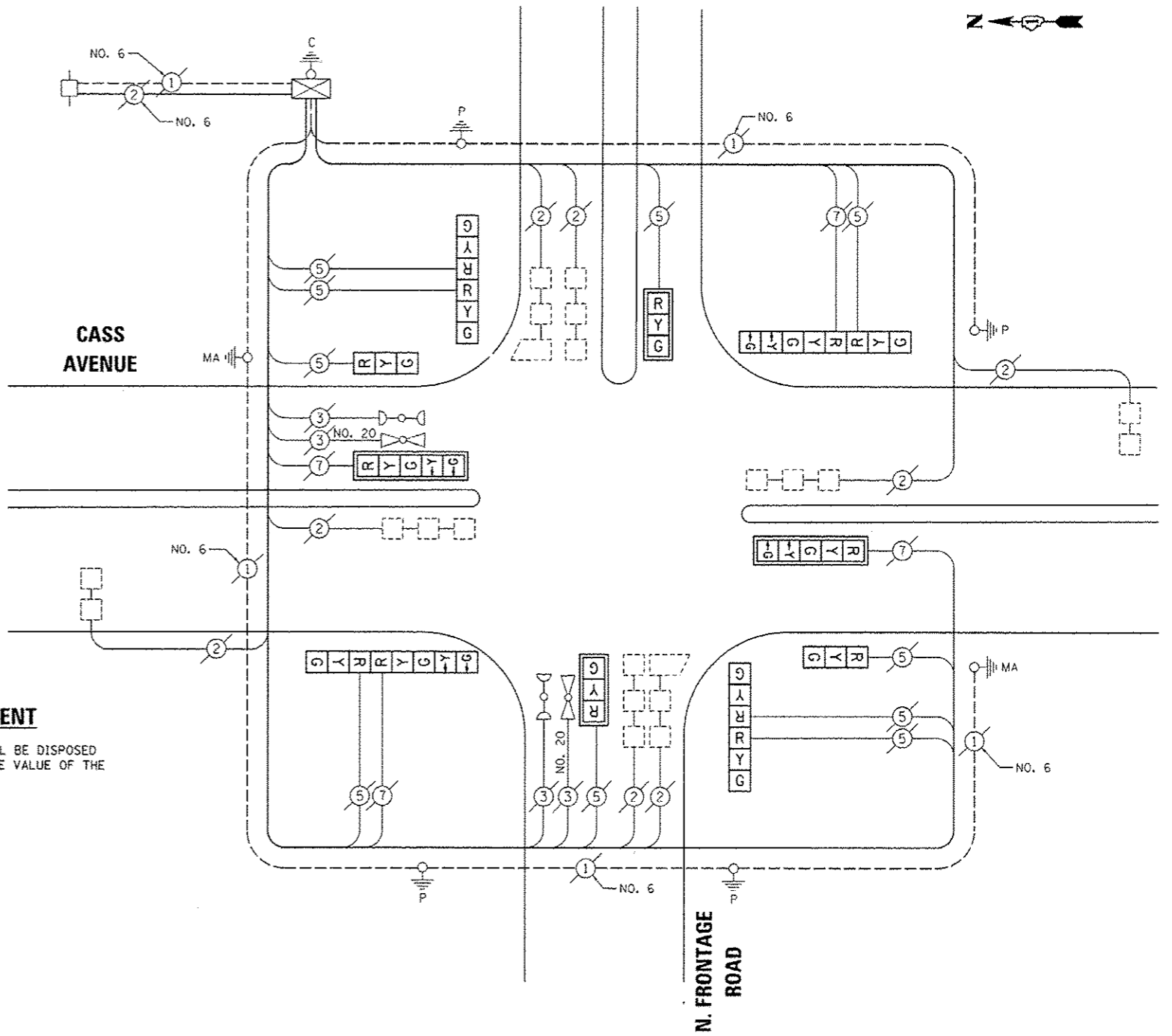
REMOVAL OF EXISTING TRAFFIC SIGNAL EQUIPMENT

THE FOLLOWING ITEMS SHALL BE REMOVED BY THE CONTRACTOR AND SHALL BE DISPOSED OF BY THEM OUTSIDE THE RIGHT-OF-WAY AT THEIR EXPENSE. THE SALVAGE VALUE OF THE REMOVED EQUIPMENT SHALL BE REFLECTED IN THE CONTRACT BID PRICE.

- 10 EACH SIGNAL HEAD, 3-SECTION
- 4 EACH SIGNAL HEAD, 5-SECTION
- 4 EACH TRAFFIC SIGNAL BACKPLATE

SCHEDULE OF QUANTITIES

ITEM	UNIT	QUANTITY
MAINTENANCE OF EXISTING TRAFFIC SIGNAL INSTALLATION	EACH	1
SIGNAL HEAD, LED, 1-FACE, 3-SECTION, MAST ARM MOUNTED	EACH	2
SIGNAL HEAD, LED, 1-FACE, 3-SECTION, BRACKET MOUNTED	EACH	2
SIGNAL HEAD, LED, 1-FACE, 5-SECTION, MAST ARM MOUNTED	EACH	2
SIGNAL HEAD, LED, 2-FACE, 3-SECTION, BRACKET MOUNTED	EACH	2
SIGNAL HEAD, LED, 2-FACE, 1-3-SECTION, 1-5 SECTION, BRACKET MOUNTED	EACH	2
TRAFFIC SIGNAL BACKPLATE, LOUVERED, ALUMINUM	EACH	4
REMOVE EXISTING TRAFFIC SIGNAL EQUIPMENT	EACH	1



CABLE PLAN

NOTE:
THE TRAFFIC SIGNAL CONTROL EQUIPMENT FOR THIS PROJECT SHALL BE "ECONOLITE" TO MATCH THE EXISTING ADJACENT SYSTEM.

TS# 5975
DARIEN

PREPARED BY:
CEMCON, Ltd.
Consulting Engineers, Land Surveyors & Planners
2280 White Oak Circle, Suite 100
Aurora, Illinois 60504-9675
Ph: 630.862.2100 Fax: 630.862.2199
E-Mail: cem@cemcon.com Website: www.cemcon.com

FILE NAME MICROST\352485\ 76-5975.DGN	USER NAME JCC	DESIGNED BPT	REVISED 5/28/13
PLOT SCALE NOT TO SCALE	CHECKED BPT	DRAWN JCC/RDS	REVISED
PLOT DATE X	DATE 03-22-13		

STATE OF ILLINOIS
DEPARTMENT OF TRANSPORTATION

SCHEDULE OF QUANTITIES, CABLE PLAN, PHASE DESIGNATION DIAGRAM AND EMERGENCY VEHICLE PREEMPTION CASS AVENUE AT N. FRONTAGE ROAD			
SCALE: N.T.S.	SHEET NO. OF SHEETS	STA. TO STA.	FED. ROAD DIST. NO. ILLINOIS FED. AID PROJECT

F.A.P. RTE.	SECTION	COUNTY	TOTAL SHEETS	SHEET NO.
VAR.	2012-084TS	DU PAGE	89	87B
CONTRACT NO. 60W02				