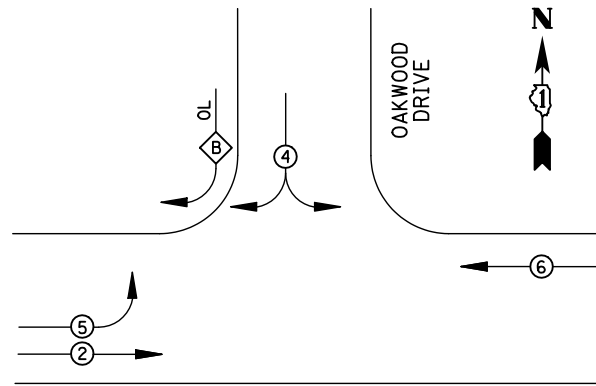


**EXISTING CONTROLLER SEQUENCE**

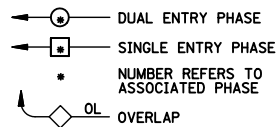


U.S. ROUTE 34  
(OGDEN AVENUE)

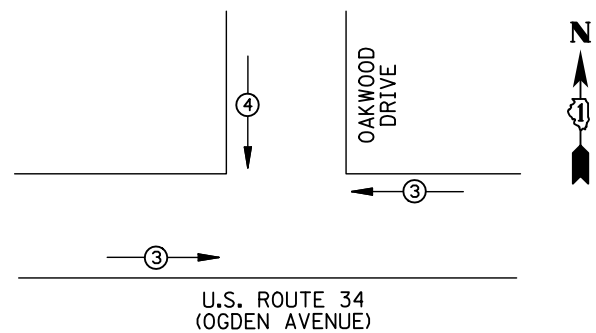
**RIGHT TURN OVERLAP  
PHASE DESIGNATION**

OVERLAP LETTER	PERMISSIVE PHASE	PROTECTED PHASE
B	= 4	+ 5

**LEGEND**



**EXISTING  
PHASE DESIGNATION DIAGRAM**



U.S. ROUTE 34  
(OGDEN AVENUE)

EMERGENCY VEHICLE PREEMPTORS		
EMERGENCY VEHICLE PREEMPTOR	3	4
MOVEMENT	←→	↕

**EMERGENCY VEHICLE PREEMPTION SEQUENCE**

I.D.O.T TRAFFIC SIGNAL INSTALLATION ELECTRICAL SERVICE REQUIREMENTS					TOTAL WATTAGE
TYPE	NO. LAMPS	WATTAGE INCAND.	LED	%OPERATION	
SIGNAL (RED)	10	135	17	0.50	85
(YELLOW)	10	135	25	0.25	62.5
(GREEN)	10	135	15	0.25	37.5
ARROW	4	135	12	0.10	4.8
PED. SIGNAL		90	25	1.00	
CONTROLLER	1	100	100	1.00	100
ILLUM. SIGN		84		0.05	
FLASHER		135	25	0.50	
ENERGY COSTS TO: ILLINOIS DEPARTMENT OF TRANSPORTATION 201 WEST CENTER COURT SCHAUMBURG, IL 60196-1096					TOTAL = 289.8
ENERGY SUPPLY	CONTACT: X				
	PHONE: X				
	COMPANY: X				

**REMOVAL OF EXISTING TRAFFIC SIGNAL EQUIPMENT**

THE FOLLOWING ITEMS SHALL BE REMOVED BY THE CONTRACTOR AND SHALL BE DISPOSED OF BY THEM OUTSIDE THE RIGHT-OF-WAY AT THEIR EXPENSE. THE SALVAGE VALUE OF THE REMOVED EQUIPMENT SHALL BE REFLECTED IN THE CONTRACT BID PRICE.

- 4 EACH TRAFFIC SIGNAL POST
- 8 EACH SIGNAL HEAD, 3-SECTION
- 2 EACH SIGNAL HEAD, 5-SECTION
- 2 EACH TRAFFIC SIGNAL BACKPLATE

- ① REPLACE 14 FT. PAINTED POST, RE-USE EXISTING TYPE A CONCRETE FOUNDATION
- ② REPLACE 15 FT. PAINTED POST, RE-USE EXISTING TYPE A CONCRETE FOUNDATION
- ③ REPLACE 16 FT. PAINTED POST, RE-USE EXISTING TYPE A CONCRETE FOUNDATION
- ④ REPLACE 18 FT. PAINTED POST, RE-USE EXISTING TYPE A CONCRETE FOUNDATION

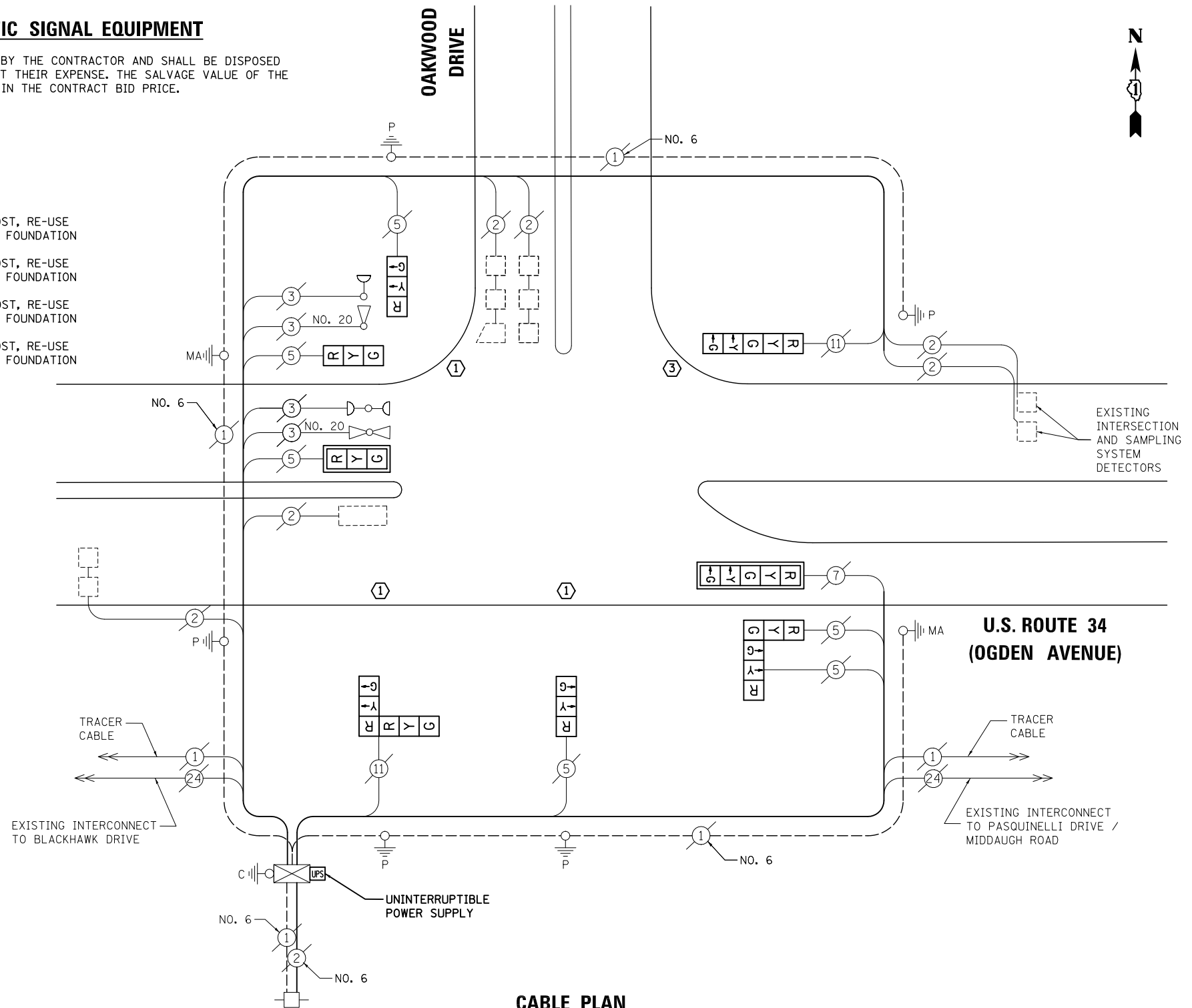
**SCHEDULE OF QUANTITIES**

**ITEM**

MAINTENANCE OF EXISTING TRAFFIC SIGNAL INSTALLATION  
 TRAFFIC SIGNAL POST, GALVANIZED STEEL 14 FT.  
 TRAFFIC SIGNAL POST, GALVANIZED STEEL 16 FT.  
 SIGNAL HEAD, LED, 1-FACE, 3-SECTION, MAST-ARM MOUNTED  
 SIGNAL HEAD, LED, 1-FACE, 3-SECTION, BRACKET MOUNTED  
 SIGNAL HEAD, LED, 1-FACE, 5-SECTION, BRACKET MOUNTED  
 SIGNAL HEAD, LED, 1-FACE, 5-SECTION, MAST-ARM MOUNTED  
 SIGNAL HEAD, LED, 2-FACE, 3-SECTION, BRACKET MOUNTED  
 TRAFFIC SIGNAL BACKPLATE, LOUVERED, ALUMINUM  
 MODIFY EXISTING CONTROLLER CABINET  
 REMOVE EXISTING TRAFFIC SIGNAL EQUIPMENT  
 UNINTERRUPTIBLE POWER SUPPLY, SPECIAL

UNIT	QUANTITY
EACH	1
EACH	3
EACH	1
EACH	1
EACH	3
EACH	1
EACH	1
EACH	2
EACH	2
EACH	1
EACH	1
EACH	1

**CABLE PLAN**



NOTE:  
THE TRAFFIC SIGNAL CONTROL EQUIPMENT FOR THIS PROJECT SHALL BE "ECONOLITE" TO MATCH THE EXISTING ADJACENT SYSTEM.

TS# 6135  
WESTMONT

PREPARED BY:  
**CEMCON, Ltd.**  
Consulting Engineers, Land Surveyors & Planners  
2280 White Oak Circle, Suite 100  
Aurora, Illinois 60504-9675  
Ph: 630.862.2100 Fax: 630.862.2199  
E-Mail: cadd@cemcon.com Website: www.cemcon.com

F.A.P. RTE.	SECTION	COUNTY	TOTAL SHEETS	SHEET NO.
VAR.	2012-084TS	DU PAGE	89	61

CONTRACT NO. 60W02

FED. ROAD DIST. NO. ILLINOIS FED. AID PROJECT

STATE OF ILLINOIS  
DEPARTMENT OF TRANSPORTATION

SCHEDULE OF QUANTITIES, CABLE PLAN,  
PHASE DESIGNATION DIAGRAM AND EMERGENCY VEHICLE PREEMPTION  
U.S. ROUTE 34 (OGDEN AVENUE) AT OAKWOOD DRIVE

SCALE: N.T.S. SHEET NO. OF SHEETS STA. TO STA.

DESIGNED - BPT	REVISED -
DRAWN - JGC/RDS	REVISED -
CHECKED - BPT	REVISED -
DATE - 03-22-13	REVISED -

FILE NAME = \MICROST\352105\ 47-6135.DGN	USER NAME = JGC
	PLOT SCALE = NOT TO SCALE
	PLOT DATE = X