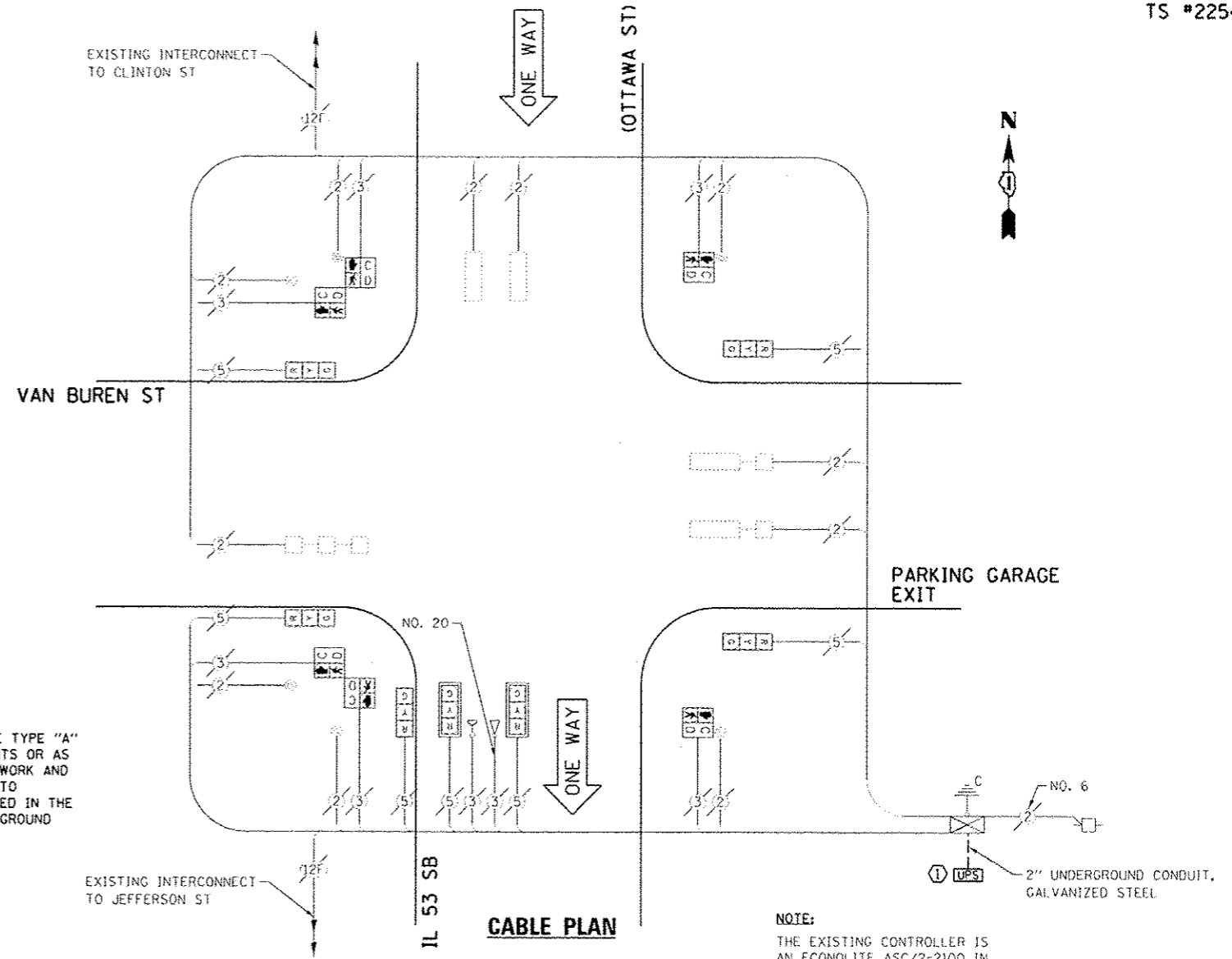


SCHEDULE OF QUANTITIES
IL 53 SOUTHBOUND (OTTAWA ST) AT VAN BUREN STREET

NO.	QUANT.	UNIT	DESCRIPTION
1.	1	EACH	MAINTENANCE OF EXISTING TRAFFIC SIGNAL INSTALLATION
2.	1	EACH	UNINTERRUPTIBLE POWER SUPPLY, GROUND MOUNTED

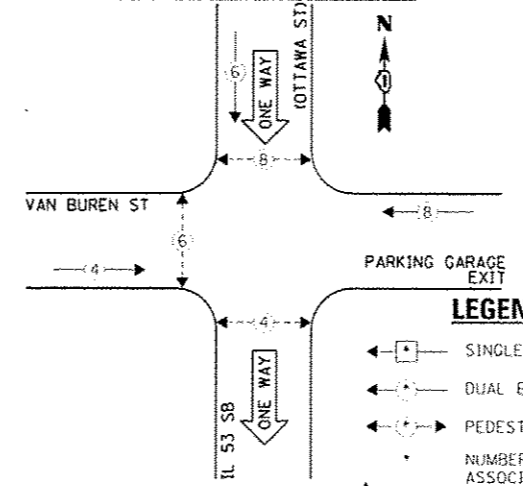


CONSTRUCTION NOTE:

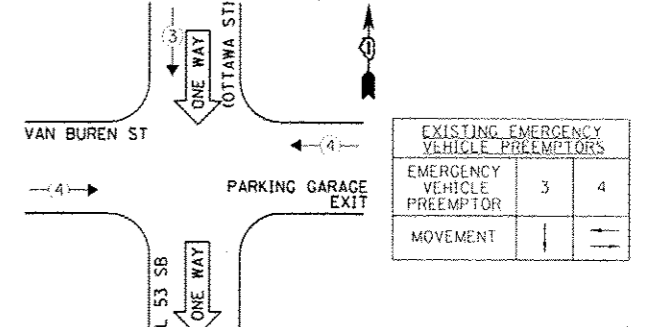
① THE UPS SHALL BE INSTALLED ON A SEPARATE TYPE "A" FOUNDATION DUE TO THE PHYSICAL CONSTRAINTS OR AS DIRECTED BY THE RESIDENT ENGINEER. THIS WORK AND ALL CONDUIT AND ELECTRICAL CABLE NEEDED TO PROPERLY INSTALL THE UPS SHALL BE INCLUDED IN THE PAY ITEM "UNINTERRUPTIBLE POWER SUPPLY, GROUND MOUNTED".

NOTE:
THE EXISTING CONTROLLER IS AN ECONOLITE ASC/2-2100 IN A TYPE III CABINET.

EXISTING CONTROLLER SEQUENCE



EXISTING EMERGENCY VEHICLE PREEMPTION SEQUENCE



LEGEND:

- ◀ * → SINGLE ENTRY PHASE
- ◀ * → DUAL ENTRY PHASE
- ◀ * → PEDESTRIAN PHASE
- NUMBER REFERS TO ASSOCIATED PHASE
- ◀ * → OVERLAP

EXISTING PHASE DESIGNATION DIAGRAM

I.D.O.T. TRAFFIC SIGNAL INSTALLATION ELECTRICAL SERVICE REQUIREMENTS				TOTAL WATTAGE	
TYPE	NO. LAMPS	INCAND. L.E.D.	OPERATION		
SIGNAL (RED)	7	135	17	0.90	59.5
SIGNAL (YELLOW)	7	135	25	0.25	43.75
SIGNAL (GREEN)	7	135	15	0.25	26.25
ARROW	6	135	12	0.10	-
FLD. SIGNAL	-	90	25	1.00	150.0
CONTROLLER	1	-	100	1.00	100.0
LUMINAIRE	-	-	250	0.50	-
L.E.D. ST. NAME SIGN	-	-	64	0.50	-
VIDEO SYSTEM	-	-	150	1.00	-
BATTERY BACKUP	1	-	25	1.00	25.0
ILLUMINATED SIGN	-	-	25	0.05	-
TOTAL =					404.5

THE TRAFFIC SIGNAL CONTROL EQUIPMENT FOR THIS PROJECT SHALL BE "ECONOLITE" TO MATCH THE EXISTING ADJACENT SYSTEM.

ENERGY COSTS - BILLED TO: IL DEPT. OF TRANSPORTATION
(ADDRESS) 201 W. CENTER COURT
(ADDRESS) SCHAMBURG, IL 60196-1096
ENERGY SUPPLY - CONTACT: TIM COSLEY
PHONE: 815-724-5010
COMPANY: COMED - JOLIET

FILE NAME: 0990-Van Buren and Ottawa.dgn	USER NAME: gwhitten	DESIGNED - KLB	REVISED - 05-24-13
Default	PLOT SCALE: 1/20	DRAWN - GWS	REVISED -
	PLOT DATE: 5/24/2013	CHECKED - KLB	REVISED -
		DATE - 05/24/13	REVISED -

STATE OF ILLINOIS
DEPARTMENT OF TRANSPORTATION

SCHEDULE OF QUANTITIES, CABLE PLAN, PHASE DESIGNATION
DIAGRAM, & EMERGENCY VEHICLE PREEMPTION SEQUENCE
IL 53 SOUTHBOUND (OTTAWA ST) AT VAN BUREN STREET

F.A. RYE, VAR	SECTION 2013-003-1	COUNTY WILL	TOTAL SHEETS 89	SHEET NO. 89B
SCALE: SHEET OF SHEETS STA. TO STA.				CONTRACT NO. 60W21
ILLINOIS FED. AID PROJECT				