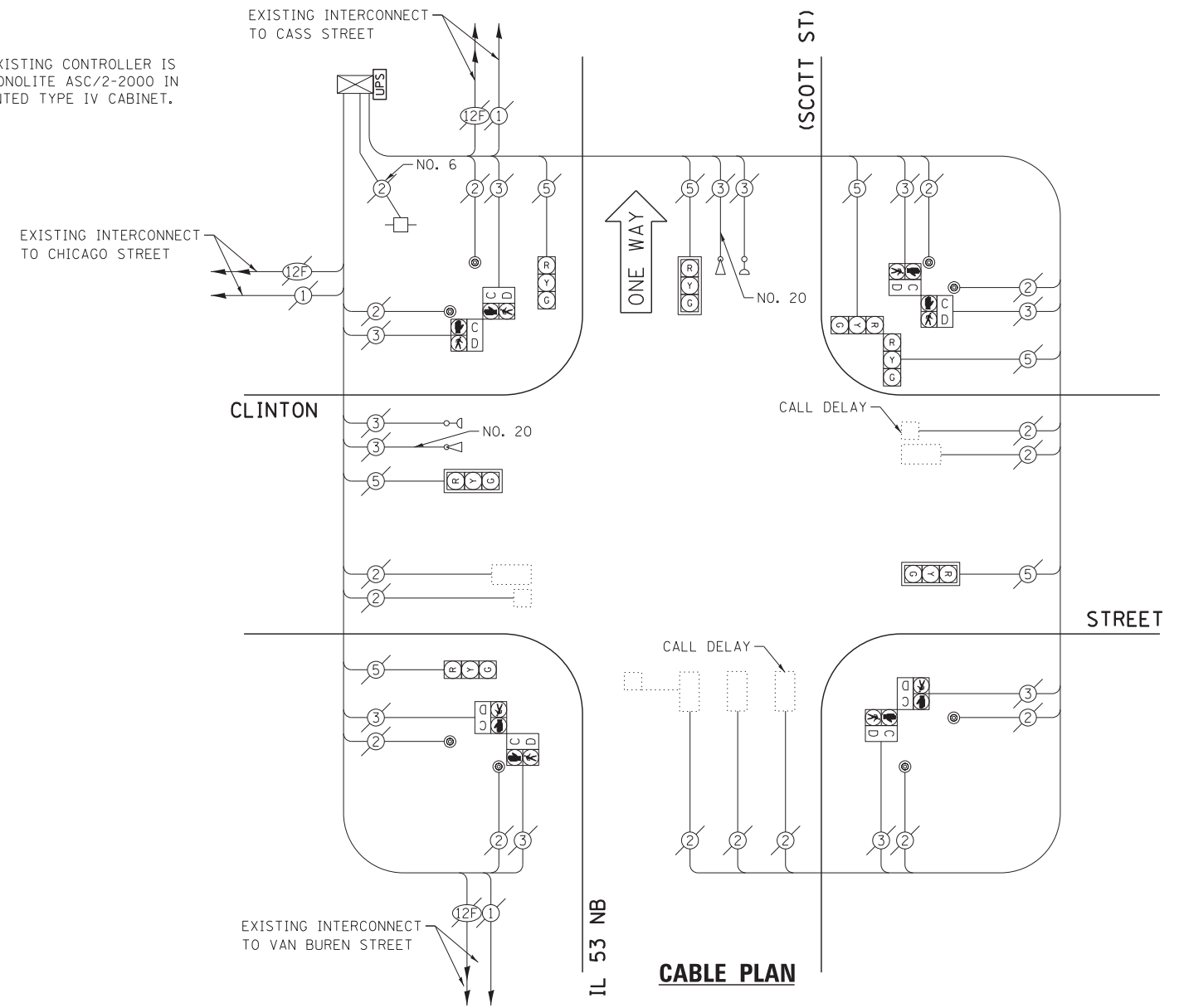


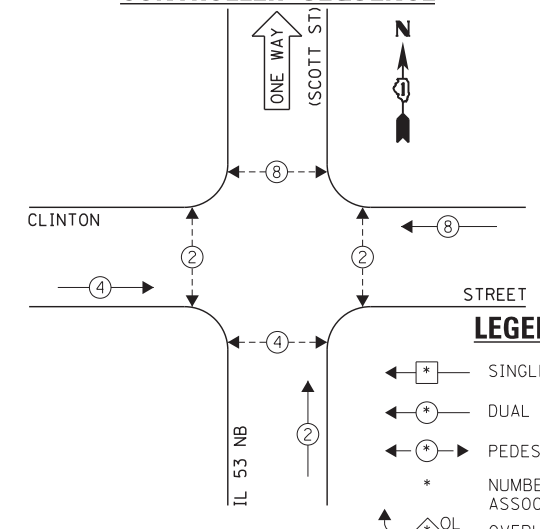
SCHEDULE OF QUANTITIES  
IL 53 (SCOTT ST) AT CLINTON STREET

NO.	QUANT.	UNIT	DESCRIPTION
1.	1	EACH	MAINTENANCE OF EXISTING TRAFFIC SIGNAL INSTALLATION
2.	1	EACH	MODIFY EXISTING CONTROLLER CABINET
3.	1	EACH	UNINTERRUPTIBLE POWER SUPPLY, SPECIAL

**NOTE:**  
THE EXISTING CONTROLLER IS AN ECONOLITE ASC/2-2000 IN A PAINTED TYPE IV CABINET.

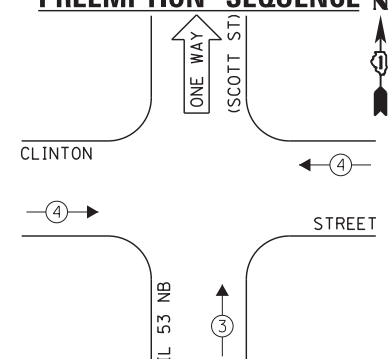


**EXISTING CONTROLLER SEQUENCE**



- LEGEND:**
- ← \* → SINGLE ENTRY PHASE
  - ← \* DUAL ENTRY PHASE
  - ← \* → PEDESTRIAN PHASE
  - \* NUMBER REFERS TO ASSOCIATED PHASE
  - ← \* → OL OVERLAP

**EXISTING EMERGENCY VEHICLE PREEMPTION SEQUENCE**



EXISTING EMERGENCY VEHICLE PREEMPTORS		
EMERGENCY VEHICLE PREEMPTOR	3	4
MOVEMENT	↑	→

I.D.O.T. TRAFFIC SIGNAL INSTALLATION ELECTRICAL SERVICE REQUIREMENTS					TOTAL WATTAGE
TYPE	NO. LAMPS	INCAND.	L.E.D.	OPERATION	
SIGNAL (RED)	7	135	17	0.50	59.5
SIGNAL (YELLOW)	7	135	25	0.25	43.75
SIGNAL (GREEN)	7	135	15	0.25	26.25
ARROW	-	135	12	0.10	-
PED. SIGNAL	8	90	25	1.00	200.0
CONTROLLER	1	-	100	1.00	100.0
LUMINAIRE	-	-	250	0.50	-
L.E.D. ST. NAME SIGN	-	-	64	0.50	-
VIDEO SYSTEM	-	-	150	1.00	-
BATTERY BACKUP	1	-	25	1.00	25.0
ILLUMINATED SIGN	-	-	25	0.05	-
TOTAL =					454.5

THE TRAFFIC SIGNAL CONTROL EQUIPMENT FOR THIS PROJECT SHALL BE "ECONOLITE" TO MATCH THE EXISTING ADJACENT SYSTEM.

ENERGY COSTS - BILLED TO: IL DEPT. OF TRANSPORTATION  
(ADDRESS) 201 W. CENTER COURT  
(ADDRESS) SCHAUMBURG, IL 60196-1096  
ENERGY SUPPLY - CONTACT: TIM COSLET  
PHONE: 815-724-5010  
COMPANY: COMED - JOLIET

FILE NAME =	USER NAME = gwhitten	DESIGNED - JRD	REVISED -
60W21-032-IL53(Scott St@Clinton St)dn		DRAWN - GW3	REVISED -
		CHECKED - KLB	REVISED -
60W21-032	PLOT DATE = 3/28/2013	DATE - 03-28-13	REVISED -

STATE OF ILLINOIS  
DEPARTMENT OF TRANSPORTATION

SCHEDULE OF QUANTITIES, CABLE PLAN, PHASE DESIGNATION  
DIAGRAM, & EMERGENCY VEHICLE PREEMPTION SEQUENCE  
IL 53 NORTHBOUND (SCOTT ST) AT CLINTON STREET

F.A. RTE.	SECTION	COUNTY	TOTAL SHEETS	SHEET NO.
VAR	2013-003-I	WILL	89	32
CONTRACT NO. 60W21				
ILLINOIS FED. AID PROJECT				