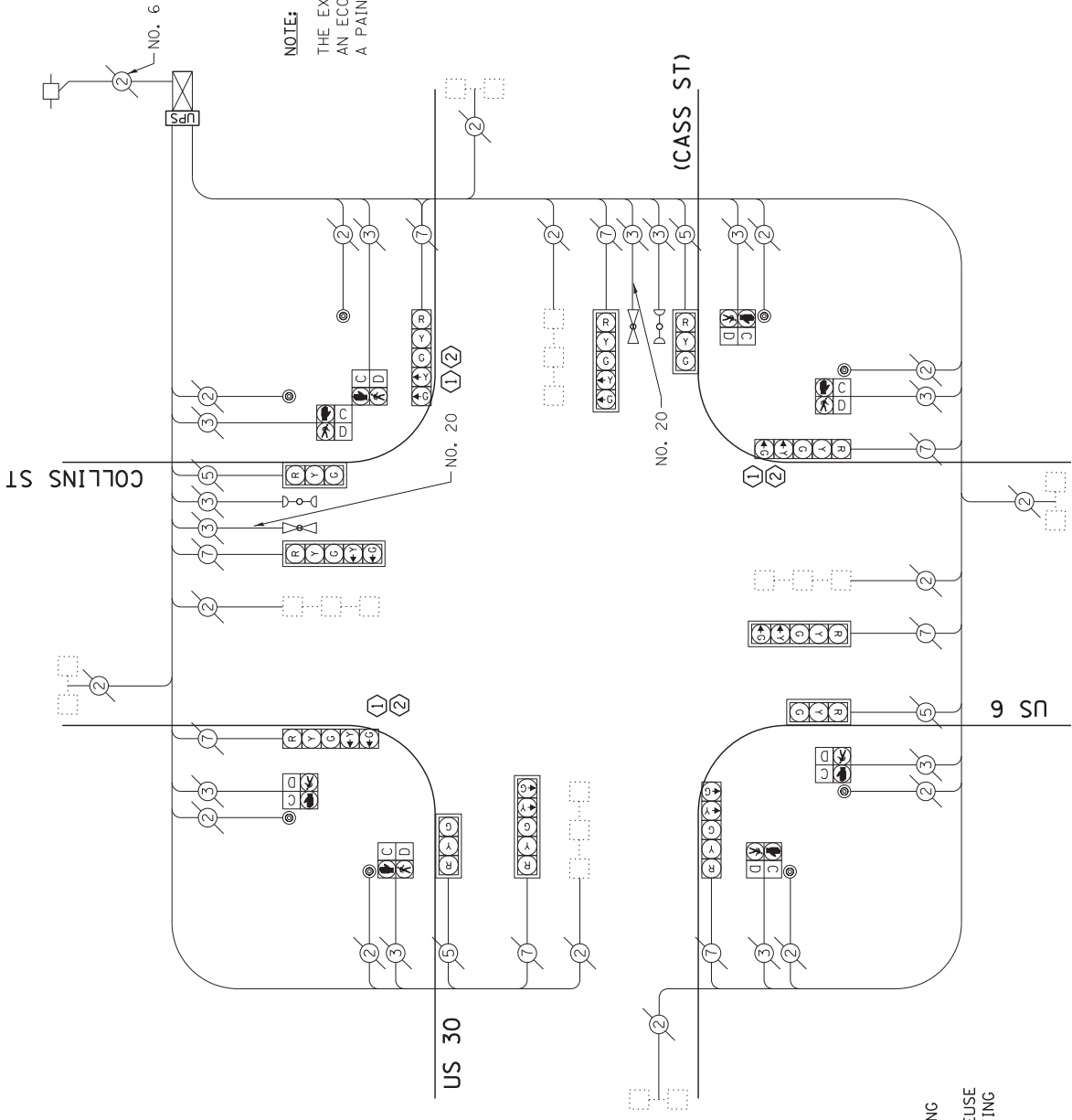


SCHEDULE OF QUANTITIES
U. S. 30 (CASS ST) AT U. S. 6 (COLLINS ST)

NO. QUANT.	UNIT
1.	EACH
2.	EACH
3.	EACH
4.	EACH
5.	EACH
6.	EACH
7.	EACH
8.	EACH

1. MAINTENANCE OF EXISTING TRAFFIC SIGNAL INSTALLATION
2. TRAFFIC SIGNAL POST, GALVANIZED STEEL 16 FT.
3. RELOCATE EXISTING SIGNAL HEAD
4. RELOCATE EXISTING PEDESTRIAN SIGNAL HEAD
5. RELOCATE EXISTING PEDESTRIAN PUSH-BUTTON
6. MODIFY EXISTING CONTROLLER CABINET
7. REMOVE EXISTING TRAFFIC SIGNAL EQUIPMENT
8. UNINTERRUPTIBLE POWER SUPPLY, SPECIAL



NOTE:
THE EXISTING CONTROLLER IS AN ECONOLITE ASC/2-2000 IN A PAINTED TYPE IV CABINET.

CABLE PLAN

CONSTRUCTION NOTE:

- ① REMOVE EXISTING SIGNAL HEADS AND REPLACE EXISTING 16 FOOT PAINTED POST. INSTALL EXISTING SIGNAL HEADS ON NEW 16 FOOT GALVANIZED STEEL POST. REUSE EXISTING TYPE "A" CONCRETE FOUNDATION AND EXISTING CABLES.
- ② AT LOCATIONS ON THE PLANS WHERE TRAFFIC SIGNAL POST REMOVAL AND NEW TRAFFIC SIGNAL POST INSTALLATIONS ARE SPECIFIED, THE CONTRACTOR SHALL INSPECT THE EXISTING POST FOUNDATIONS. PRIOR TO REMOVING THE EXISTING TRAFFIC SIGNAL POST TO BE REPLACED, THE CONTRACTOR SHALL VERIFY THAT THE EXISTING CONDITION OF THE ANCHOR BOLT IS ACCEPTABLE. IF THE EXISTING ANCHOR BOLT CONDITION IS NOT ACCEPTABLE, THE EXISTING TRAFFIC SIGNAL POST SHALL REMAIN IN PLACE AND NOT BE REMOVED AFTER THE CONTRACTOR HAS VERIFIED THE CONDITION OF THE ANCHOR BOLT WITH THE ENGINEER. THE CONTRACTOR SHALL BE PAID FOR THE NUMBER OF TRAFFIC SIGNAL POSTS INSTALLED AND NO OTHER COMPENSATION WILL BE PROVIDED.

THE FOLLOWING ITEMS SHALL BE REMOVED BY THE CONTRACTOR AND SHALL BE DISPOSED OF BY THEM OUTSIDE THE RIGHT-OF-WAY AT THEIR EXPENSE. THE SALVAGE VALUE OF THE REMOVED EQUIPMENT SHALL BE REFLECTED IN THE CONTRACT BID PRICE.

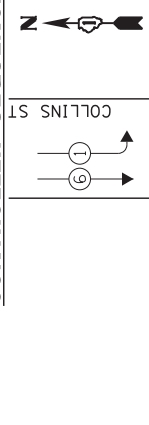
- 3 EACH TRAFFIC SIGNAL POST

TRAFFIC SIGNAL INSTALLATION ELECTRICAL SERVICE REQUIREMENTS		TOTAL WATTAGE
TYPE	NO. LAMPS INCAND. LE.D.	OPERATION WATTAGE
SIGNAL (RED)	12	135
SIGNAL (YELLOW)	12	135
SIGNAL (GREEN)	12	135
ARROW	16	135
PED. SIGNAL	8	90
CONTROLLER LUMINAIRE	1	100
L.E.D. ST. NAME SIGN	-	250
VIDEO SYSTEM	-	150
BATTERY BACKUP	1	25
ILLUMINATED SIGN	-	0.05
TOTAL =		566.2

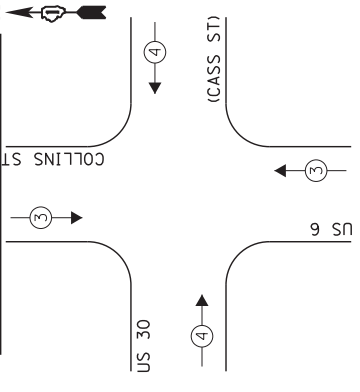
ENERGY COSTS - BILLED TO: IL DEPT. OF TRANSPORTATION
(ADDRESS) 201 W. CENTER COURT
SCHALMBURG, IL 60196-1096
CONTACT: TIM COSLET
PHONE: 815.724-5010
COMPANY: COMED - JULIET

FILE NAME = USER NAME = gwhitten
60W21-048-US30Cass 510156Collins 510.dwg
PLOT SCALE = 1:20
PLOT DATE = 3/29/2013

EXISTING CONTROLLER SEQUENCE



EXISTING EMERGENCY VEHICLE PREEMPTION SEQUENCE



LEGEND:

- SINGLE ENTRY PHASE
- DUAL ENTRY PHASE
- PEDESTRIAN PHASE
- NUMBER REFERS TO ASSOCIATED PHASE
- OVERLAP

EXISTING PHASE DESIGNATION DIAGRAM

STATE OF ILLINOIS
DEPARTMENT OF TRANSPORTATION

SCHEDULE OF QUANTITIES, CABLE PLAN, PHASE DESIGNATION DIAGRAM, & EMERGENCY VEHICLE PREEMPTION SEQUENCE
US 30 (CASS ST) AT US 6 (COLLINS ST)

DESIGNED - JRD REVISION -
DRAWN - GW3 REVISION -
CHECKED - KLB REVISION -
DATE - 03-28-13 REVISION -

FILE NAME = USER NAME = gwhitten
60W21-048-US30Cass 510156Collins 510.dwg
PLOT SCALE = 1:20
PLOT DATE = 3/29/2013

ENERGY COSTS - BILLED TO: IL DEPT. OF TRANSPORTATION
(ADDRESS) 201 W. CENTER COURT
SCHALMBURG, IL 60196-1096
CONTACT: TIM COSLET
PHONE: 815.724-5010
COMPANY: COMED - JULIET

SCALE: SHEET OF SHEETS STA. TO STA.

F.A. RITE. SECTION COUNTY TOTAL SHEETS SHEET NO.
2013-003-1 WILL 89 48
ILLINOIS FED. AID PROJECT CONTRACT NO. 60W21

GHA #4085,888