

STATE OF ILLINOIS  
DEPARTMENT OF TRANSPORTATION  
DIVISION OF HIGHWAYS

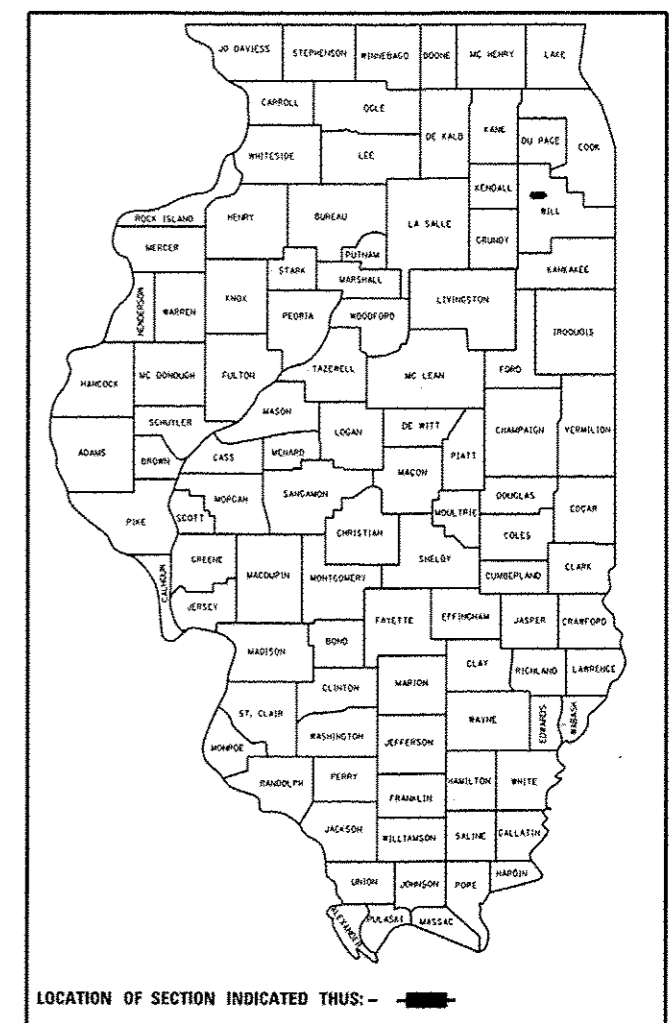
**PROPOSED  
HIGHWAY PLANS**

VARIOUS LOCATIONS IN WILL COUNTY  
LIGHT EMITTING DIODE (LED) INSTALLATION  
SECTION 2013-004-1  
WILL COUNTY  
D-91-217-13

F.A. RTE.	SECTION	COUNTY	TOTAL SHEETS	SHEET NO.
VAR.	2013-004-1	WILL	58	1
		ILLINOIS	CONTRACT NO. 60W22	

\*58-1 = 57

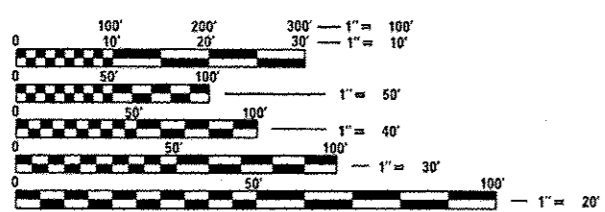
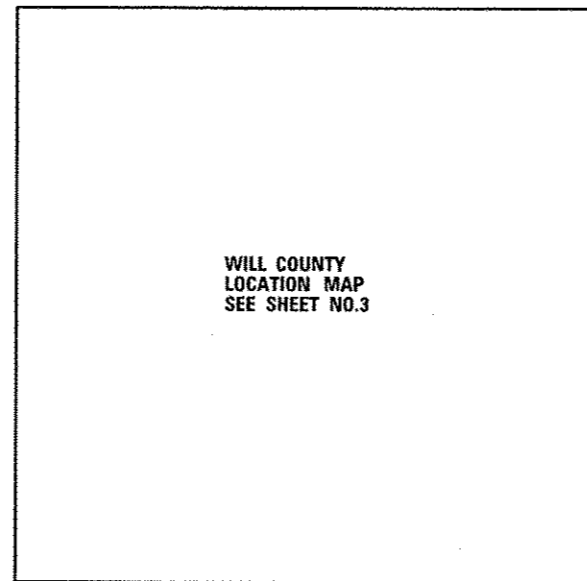
D-91-217-13



FOR INDEX OF SHEETS, SEE SHEET NO. 2

**HIGHWAY STANDARDS**

- 701006-03 OFF-ROAD OPERATIONS 2L, 2W, 15' (4.5 m) TO 24" (600 mm) FROM PAVEMENT EDGE
- 701101-02 OFF-ROAD OPERATIONS MULTILANE, 15' (4.5 m) TO 24" (600 mm) FROM PAVEMENT EDGE
- 701701-08 URBAN LANE CLOSURE MULTILANE INTERSECTION
- 701901-02 TRAFFIC CONTROL DEVICES
- 720001-01 SIGN PANEL MOUNTING DETAIL
- 720006-03 SIGN PANEL ERECTION DETAILS
- 857001-01 STANDARD PHASE DESIGNATION DIAGRAMS AND PHASE SEQUENCES
- 862001-01 UNINTERRUPTABLE POWER SUPPLY (UPS)
- 880006-01 TRAFFIC SIGNAL MOUNTING DETAILS



FULL SIZE PLANS HAVE BEEN PREPARED USING STANDARD ENGINEERING SCALES. REDUCED SIZED PLANS WILL NOT CONFORM TO STANDARD SCALES. IN MAKING MEASUREMENTS ON REDUCED PLANS, THE ABOVE SCALES MAY BE USED.

J.U.L.I.E.  
JOINT UTILITY LOCATION INFORMATION FOR EXCAVATION  
1-800-892-0123  
OR 811

PROJECT ENGINEER: ISIS ROSADO  
PROJECT MANAGER: SUDUD MAHMOUD (847) 708-4420

CONTRACT NO. 60W22

STATE OF ILLINOIS  
DEPARTMENT OF TRANSPORTATION  
DIVISION OF HIGHWAYS

SUBMITTED March 29 20 13  
*John P. [Signature]*  
DEPUTY DIRECTOR OF HIGHWAYS, REGION ENGINEER

May 10 20 13  
*John D. Baranzelli PE, Jr.*  
ENGINEER OF DESIGN AND ENVIRONMENT

May 10 20 13  
*Omer Osman PE, Jr.*  
DIRECTOR OF HIGHWAYS, CHIEF ENGINEER

PRINTED BY THE AUTHORITY  
OF THE STATE OF ILLINOIS

Rev. 6-4-13