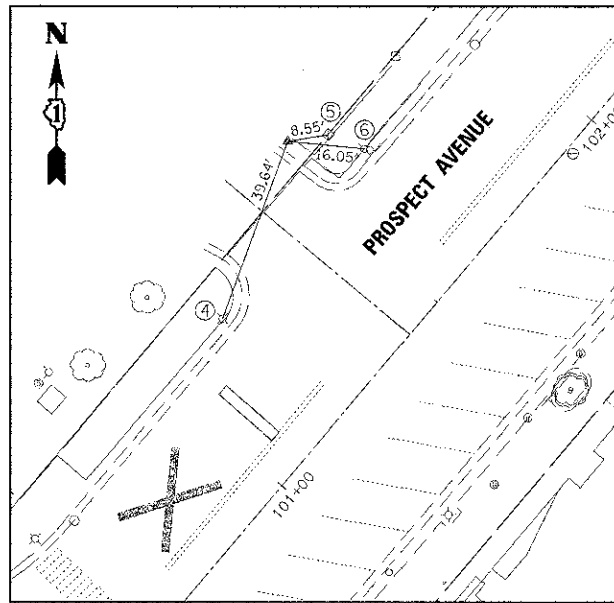


**CONTROL POINT #1922**  
STA 100+28.35, 27.97' RT

CONTROL POINT #1922 IS AN "X" CUT IN WALK ON N.E. CORNER OF SUMMIT AVE. AND PROSPECT AVE.

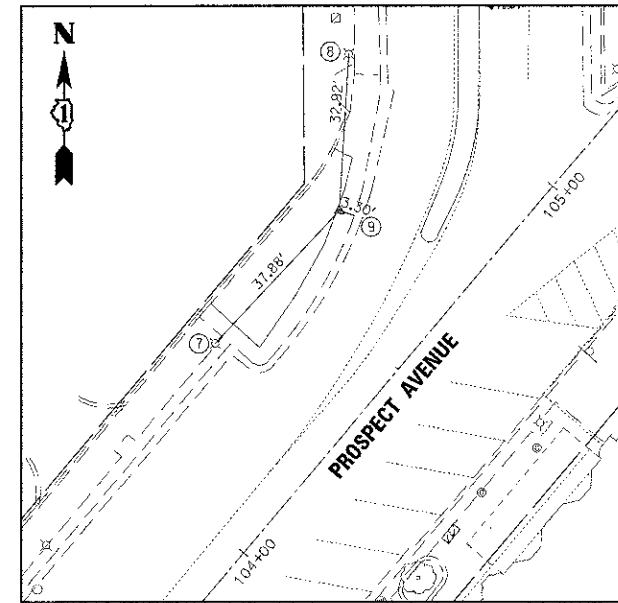
- 1. CENTER OF VAULT
- 2. CORNER OF SIDEWALK
- 3. CORNER OF BUILDING



**CONTROL POINT #2120**  
STA 101+55.92, 45.60' LT

CONTROL POINT #2120 IS AN "X" CUT IN WALK

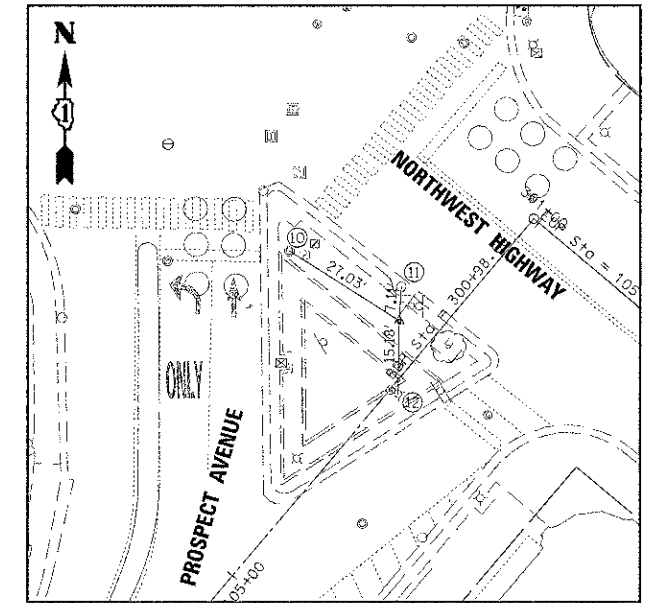
- 4. CENTER OF LIGHT POLE
- 5. CENTER OF HANDHOLE
- 6. CENTER OF LIGHT POLE



**CONTROL POINT #3077**  
STA 100+67.51, 30.77' LT

CONTROL POINT #3077 IS AN "X" CUT IN WALK

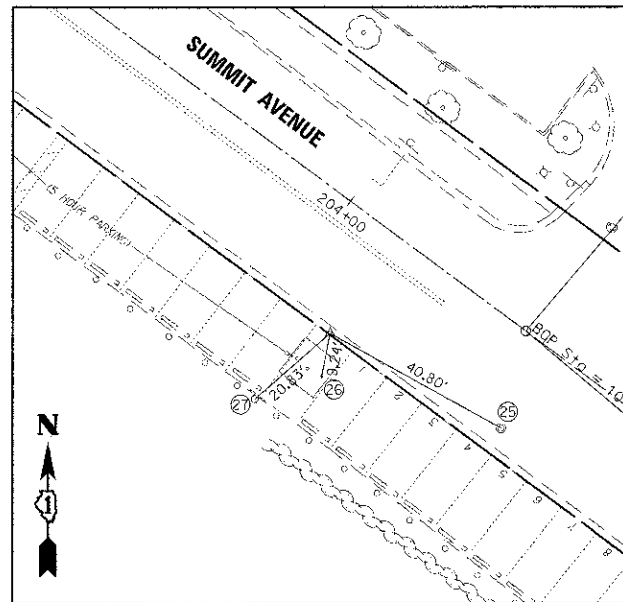
- 7. CENTER OF LIGHT POLE
- 8. CENTER OF LIGHT POLE
- 9. BACK OF CURB AT RIGHT ANGLE



**CONTROL POINT #1475**  
STA 105+63.00, 7.77' LT

CONTROL POINT #1475 IS AN "X" CUT IN WALK ON S.E. CORNER OF NORTHWEST HWY. AND PROSPECT AVE.

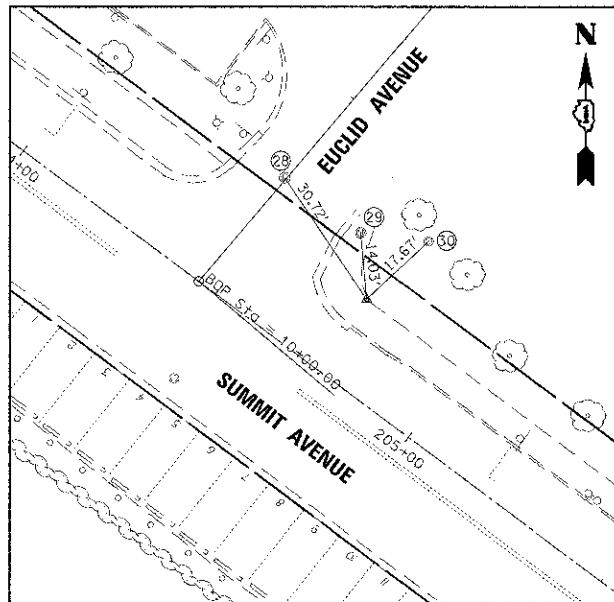
- 10. CENTER OF TRAFFIC SIGNAL
- 11. CENTER OF CATCH BASIN
- 12. CENTER OF FIRE HYDRANT



**CONTROL POINT #1476**  
STA 204+13.16, 24.74' RT

CONTROL POINT #1476 IS AN "X" CUT IN CURB

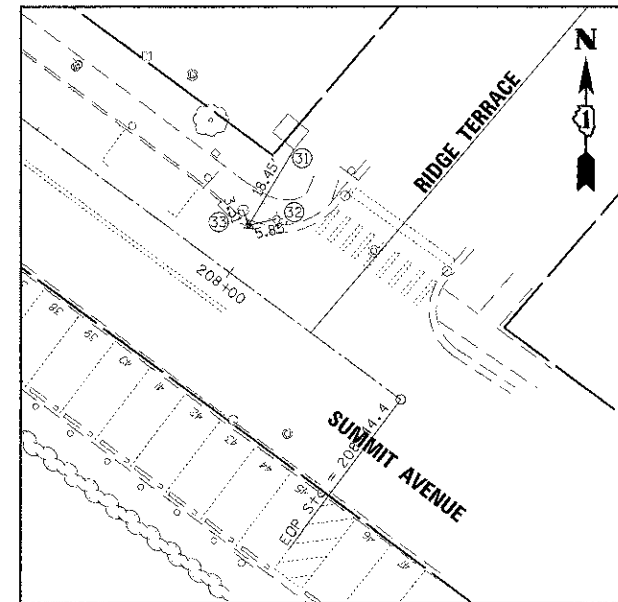
- 25. CENTER OF MANHOLE
- 26. CENTER OF WOOD POST
- 27. CENTER OF PARKING SIGN



**CONTROL POINT #145**  
STA 204+75.85, 17.91' LT

CONTROL POINT #145 IS AN "X" CUT IN WALK AT N.E. CORNER OF SUMMIT AVE. AND EUCLID AVE.

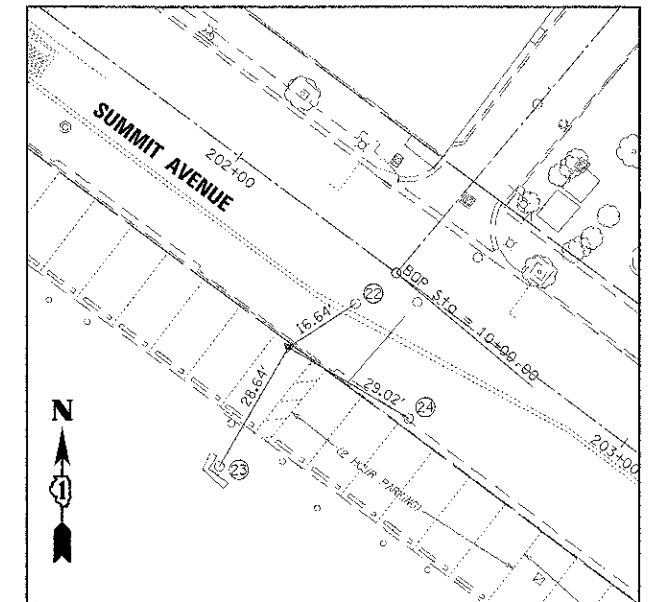
- 28. CENTER OF MANHOLE
- 29. CENTER OF MANHOLE
- 30. CENTER OF MANHOLE



**CONTROL POINT #1463**  
STA 207+97.19, 10.31' LT

CONTROL POINT #1463 IS AN "X" CUT IN CURB AT N.W. CORNER OF SUMMIT AVE. AND RIDGE TERRACE

- 31. BASE OF TRANSFORMER AT CORNER
- 32. CENTER OF LIGHT POLE
- 33. CENTER OF MANHOLE



**CONTROL POINT #1158**  
STA 202+32.08, 25.87' RT

CONTROL POINT #1158 IS A FK NAIL IN ASPHALT

- 22. CENTER OF MANHOLE
- 23. CENTER OF CATCH BASIN
- 24. CENTER OF CATCH BASIN

FILE NAME = 3737_16AL03.DGN	USER NAME = bkrevets	DESIGNED - BS	REVISED -	<b>STATE OF ILLINOIS DEPARTMENT OF TRANSPORTATION</b>	<b>ALIGNMENT, TIES, BENCHMARKS, AND CONTROL POINTS</b>	F.A. RTE.	SECTION	COUNTY	TOTAL SHEETS	SHEET NO.	
	PLOT SCALE = 1:288	DRAWN -	REVISED -			10-00149-00-LS	COOK	69	10		
	PLOT DATE = 4/8/2013	CHECKED - JCK	REVISED -			CONTRACT NO. 63723					
		DATE -	REVISED -			SCALE: 1"=20'	SHEET 3 OF 4 SHEETS	STA.	TO STA.	ILLINOIS FED. AID PROJECT	