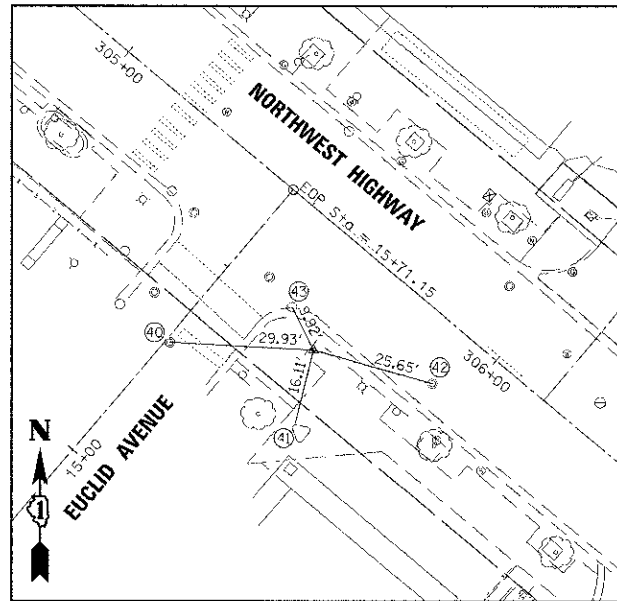


CONTROL POINT #614
STA 303+81.35, 31.35' RT

CONTROL POINT #614 IS A "X" CUT IN WALK

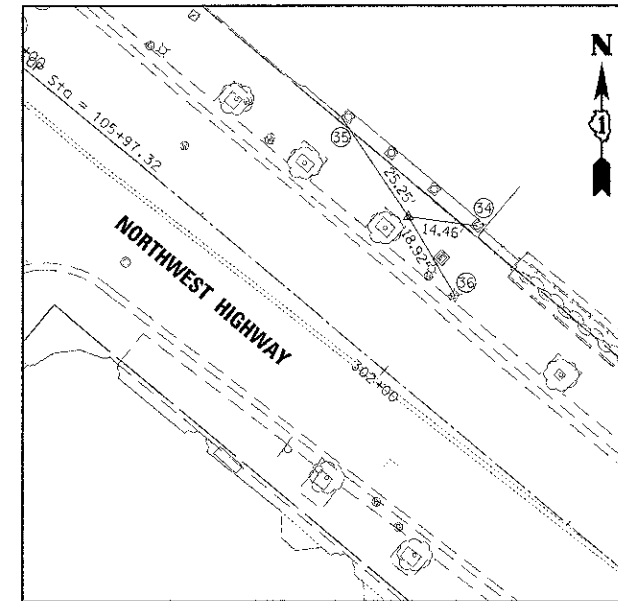
- 37. BASE OF BUILDING AT CORNER
- 38. BASE OF BUILDING AT CORNER
- 39. CENTER OF MANHOLE



CONTROL POINT #1455
STA 305+69.55, 22.78' RT

CONTROL POINT #1455 IS A "X" CUT IN WALK ON S.E. CORNER OF NORTHWEST HWY. AND EUCLID AVE.

- 40. CENTER OF MANHOLE
- 41. BASE OF BRICK MONUMENT AT CORNER
- 42. CENTER OF MANHOLE
- 43. CENTER OF CATCH BASIN



CONTROL POINT #18
STA 301+83.23, 27.64' LT

CONTROL POINT #18 IS A "X" CUT IN WALK ON NORTH SIDE OF NORTHWEST HWY.

- 34. CENTER OF COLUMN
- 35. BASE OF BUILDING AT CORNER
- 36. CENTER OF FIRE HYDRANT

BENCHMARK

ELEVATION = 666.69 U.S.G.S.

**FLAGPOLE NORTHEAST OF PARK RIDGE PUBLIC LIBRARY
NORTHEAST CORNER OF CONCRETE FLAGPOLE BASE.**

FILE NAME = 3737.16AL04.DGN	USER NAME = bkrevets	DESIGNED - BS	REVISED -	STATE OF ILLINOIS DEPARTMENT OF TRANSPORTATION	ALIGNMENT, TIES, BENCHMARKS, AND CONTROL POINTS	F.A. RTE.	SECTION	COUNTY	TOTAL SHEET SHEETS NO.	
	PLOT SCALE = 1:20	DRAWN -	REVISED -				10-00149-00-LS	COOK	69	11
	PLOT DATE = 4/8/2013	CHECKED - JCK	REVISED -			SCALE: 1"=20'	SHEET 4 OF 4 SHEETS	STA.	TO STA.	CONTRACT NO. 63723
		DATE -	REVISED -			ILLINOIS FED. AID PROJECT				