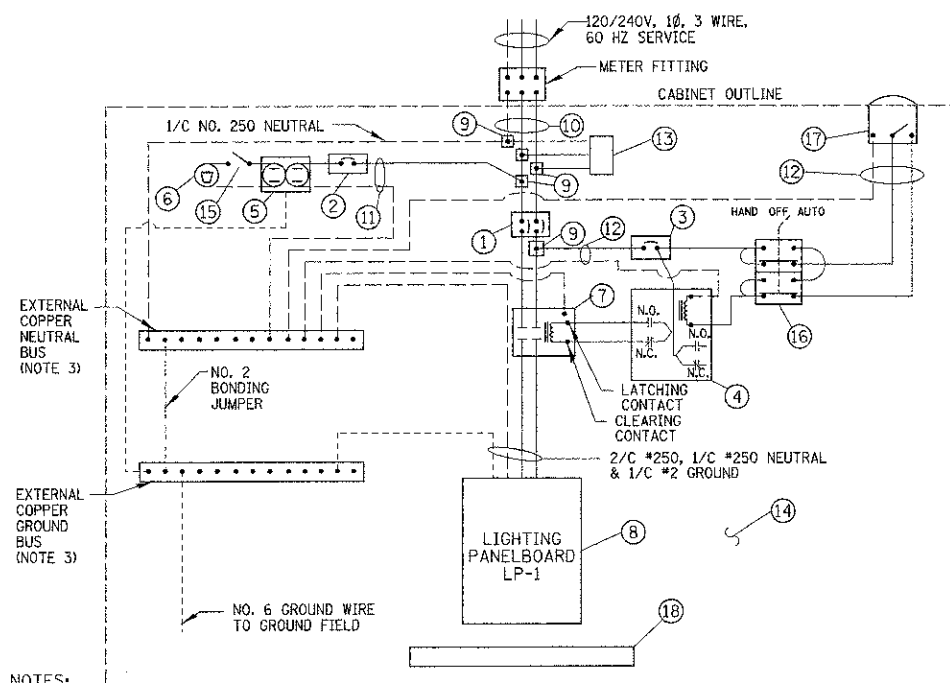


ITEM	SPECIFICATION
① MAIN CIRCUIT BREAKER (NOTE 3)	250 AMPERE, 2P, 240V RATING, 18KAIC, THERMAL MAGNETIC MOLDED CASE
② CABINET RECEPTACLE/LIGHT CIRCUIT BREAKER (NOTE 3)	20 AMPERE, 1P, 120V RATING, 18KAIC, THERMAL MAGNETIC MOLDED CASE
③ CONTROL CIRCUIT BREAKER	15 AMPERE, 1P, 120V RATING, 18KAIC, THERMAL MAGNETIC MOLDED CASE
④ AUXILIARY RELAY	30 AMPERE, 120 V OPERATED DPDT 60 HZ COIL, 2 NO & 2 NC CONTACTS PLUG-IN TYPE, PANEL MOUNTED
⑤ CABINET RECEPTACLE AND BOX	COMMERCIAL GRADE GFCI 20A/120V, MOUNTED IN A WEATHERPROOF DIE CAST ALUMINUM SINGLE GANG BOX WITH WEATHERPROOF FLAPPER TYPE COVER
⑥ CABINET LIGHT AND BOX	DIECAST ALUMINUM BOX AND CAGE, WITH VAPORPROOF CLEAR GLASS GLOBE, EXTERIOR GRADE 120V - 100W MEDIUM BASE INCANDESCENT LAMP
⑦ LIGHTING CONTACTOR	300 AMPERE, 2 POLE, 120 VOLT COIL, MECH HELD
⑧ LIGHTING PANELBOARD LP-1	120/240V-1Ø-400A MAIN LUG ONLY, 42 SPACE, 18KAIC, 20" WIDE, NEMA 1 ENCLOSURE, BOLT ON BREAKERS (SEE PANELBOARD SCHEDULE)
⑨ POWER DISTRIBUTION BLOCK	600 VOLT, INSULATED, SIZE AS REQUIRED
⑩ SERVICE CABLES	3-600V (XLP-TYPE USE) NO. 250MCM
⑪ LAMPHOLDER WIRE	600V XLP NO. 12
⑫ CONTROL WIRE	600V XLP NO. 12
⑬ SURGE ARRESTOR	36 K AMPERE RATING PER PHASE
⑭ BACKBOARD	1/2" THICK, SOLID PHENOLIC LAMINATE
⑮ DOOR SWITCH	20 AMPERE, 120 VOLT, MOUNTED IN DOOR, SNAP ACTION TYPE, PLUNGER SWITCH,
⑯ HAND-AUTO-OFF CONTROL SWITCH	20A, 3 POS. SELECTOR TYPE, MTD IN SQUARE DIE CAST ALUMINUM BOX
⑰ PHOTOCELL	120V, MTD. ON CABINET, 30 SEC DELAY, SPST-NC, 1-4FC ON, 3-12FC OFF
⑱ TERMINAL BLOCKS	30 AMPERE, 240V, 42 CKTS, #14-#4AWG, INSULATED, CKTS LABELED

- NOTES: 1. ALL ITEMS LISTED IN LIGHTING CONTROLLER COMPONENT SCHEDULE SHALL BE CONSIDERED INCIDENTAL TO THE PRICE BID FOR THE LIGHTING CONTROLLER INCLUDING CABINET AND FOUNDATION.
2. THE LIGHTING CONTROLLER TOGETHER WITH ALL OF ITS COMPONENTS SHALL BE UL LISTED AS AN "ENCLOSED INDUSTRIAL CONTROL PANEL" UNDER UL508A.
3. IN ADDITION TO REQUIRED LABELING, THIS CIRCUIT BREAKER SHALL ALSO BE LABELED "SERVICE DISCONNECT".
4. ALL SWITCHES AND CONTROLS SHALL BE IDENTIFIED USING TWO COLOR ENGRAVED NAMEPLATES.

LIGHTING CONTROLLER COMPONENT SCHEDULE



- NOTES:
- ALL BRANCH CIRCUIT NEUTRAL AND GROUND WIRES SHALL TERMINATE ON EXTERNAL BUSES (NOT IN PANELBOARD).
 - THE PANEL MANUFACTURER SHALL LABEL THE CABINET WITH THE APPROPRIATE ARC FLASH WARNING AND PERSONNEL PROTECTION EQUIPMENT REQUIRED FOR SERVICING.
 - IN ADDITION TO THE TERMINATIONS SHOWN, THE NEUTRAL BUS SHALL ACCOMMODATE 18 ADDITIONAL TERMINATIONS (#2-#14), AND THE GROUND BUS SHALL ACCOMMODATE 12 ADDITIONAL TERMINATIONS (#2-#14).

LIGHTING CONTROLLER WIRING DETAIL

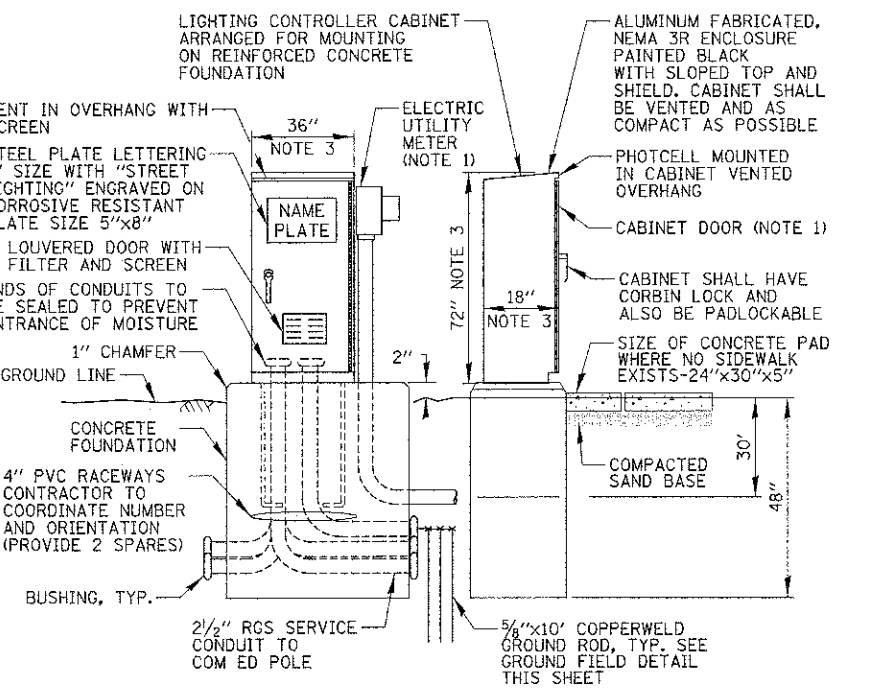
N.T.S.

———— PHASE CONDUCTOR
 - - - - - NEUTRAL CONDUCTOR
 - - - - - GROUND CONDUCTOR

PANELBOARD SCHEDULE LP-1												
FED FROM: MAIN BREAKER/CONTACTOR VOLTAGE: 120/240V, 1 PH, 3W BUS SIZE: 400 MOUNTING: SURFACE						TOT. 'A' PHASE: 4992 VA TOT. 'B' PHASE: 5532 VA			TOTAL 'A' + 'B': 10524 VA TOTAL AMPS: 43.9 A			
WIRE COLORS	CKT #	CB/POLES	DESCRIPTION	A PH VA	B PH VA	A PH VA	B PH VA	DESCRIPTION	CB/POLES	CKT #	WIRE COLORS	
B	1	20A	PROSPECT LIGHTING (E)	396	396	396	396	PROSPECT LIGHTING (E)	20A	2	R	
B	3	2P							2P	4	R	
B	5	20A	SUMMIT LIGHTING	540	540	240	240	SUMMIT LIGHTING	20A	6	R	
B	7	2P							2P	8	R	
	9	30A	SPARE					SPARE	30A	10		
	11	2P							2P	12		
BL	13	20A	PROSPECT FESTOON RECEIPTS (E)	900		720		SUMMIT FESTOONS	20A	14	BL	
OR	15	2P							2P	16	OR	
	17	20A	SPARE					SPARE	20A	18		
	19	2P							2P	20		
	21	2P	SPARE					SPARE	20A	22		
	23	2P							2P	24		
BL	25	20A	PROSPECT PLANTER RECEIPTS (E)	900	1260	900	900	SUMMIT PLANTER RECEIPTS	*20A/1P	26	BL	
OR	27	2P						SUMMIT PLANTER RECEIPTS	*20A/1P	28	OR	
	29	20A	SPARE					SPARE	20A	30		
	31	2P							2P	32		
	33	20A	SPARE					SPARE	20A	34		
	35	2P							2P	36		
	37	20A	SPARE					SPARE	20A	38		
	39	2P							2P	40		
	41		SPACE					SPACE		42		
SUBTOTALS:				2736	3096	2256	2436					

* INDICATES GFCI CIRCUIT BREAKERS

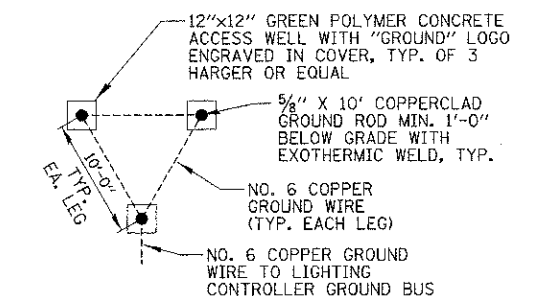
NOTES: 1. PANELBOARD SHALL BE 20" WIDE NEMA 1 ENCLOSURE.
 2. ALL CIRCUIT BREAKERS SHALL BE BOLT ON TYPE AND RATED 18KAIC MINIMUM.
 3. BRANCH CIRCUIT WIRING COLORS: (B) BLACK, (R) RED, (BL) BLUE, & (OR) ORANGE.



- NOTES:
- SEE DETAIL THIS SHEET FOR CABINET METER FITTING & DOOR ORIENTATION.
 - ALL ITEMS SHOWN ABOVE (INCLUDING FOUNDATION, ELECTRIC METER & GROUND FIELD) SHALL BE INCLUDED IN THE PRICE BID FOR "LIGHTING CONTROLLER", EXCEPT FOR THE SERVICE CONDUIT/WIRE WHICH WILL BE PAID FOR SEPARATELY.
 - CABINET DIMENSIONS SHOWN ARE APPROXIMATE, CABINET SHALL BE AS COMPACT AS POSSIBLE, CONTRACTOR TO COORDINATE.

LIGHTING CONTROLLER CABINET AND FOUNDATION

N.T.S.

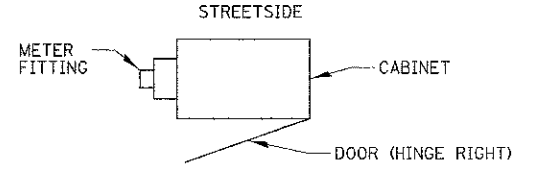


- NOTES:
- ACCESS WELLS SHALL BE INCLUDED IN THE LIGHTING CONTROLLER PAY ITEM.

GROUND FIELD DETAIL (TYP.)

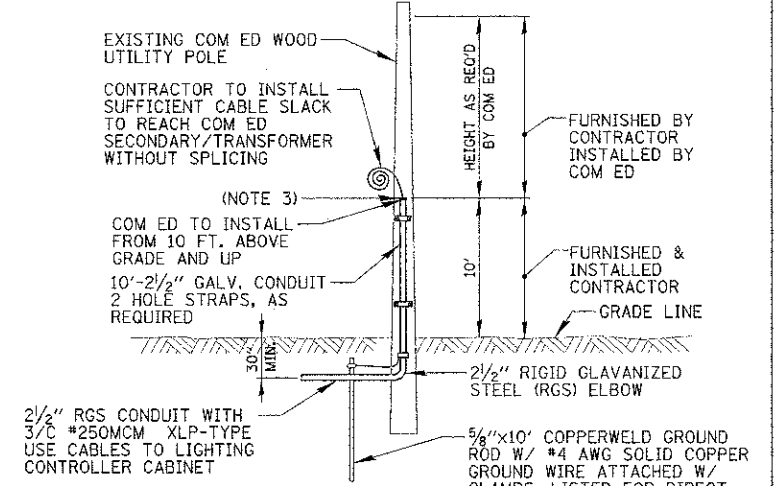
N.T.S.

NOTE:
 ALL CONDUCTORS IN THE UNIT DUCT RUNS SHALL HAVE INDIVIDUALLY COLOR CODED INSULATION THROUGHOUT THE ENTIRE LENGTH OF THE CONDUCTOR. THE COLOR IDENTIFICATION FOR NEUTRAL WIRES SHALL BE WHITE, AND THE GROUND WIRES SHALL BE GREEN. SEE PANELBOARD SCHEDULE FOR PHASE CONDUCTOR COLORS.



CABINET METER FITTING & DOOR ORIENTATION

N.T.S.



- NOTES:
- ALL WORK SHALL CONFORM TO COM ED'S BOOK OF "INFORMATION AND REQUIREMENTS FOR THE SUPPLY OF ELECTRIC SERVICE."
 - ALL MATERIAL ABOVE EXCEPT FOR POLE SHALL BE INCLUDED IN THE PRICE BID FOR "ELECTRIC SERVICE INSTALLATION". THE HORIZONTAL SERVICE CONDUIT AND WIRING FROM POLE TO CONTROLLER SHALL BE PAID FOR SEPARATELY.
 - CONTRACTOR TO PROVIDE CONDUIT BUSHING AND SEALING COMPOUND AT TOP OF RISER.

COM ED OVERHEAD CONNECTION POLE

N.T.S.

CHRISTOPHER B. BURKE ENGINEERING, LTD.
 9575 W. Higgins Road, Suite 600
 Rosemont, Illinois 60018
 (847) 823-0500