

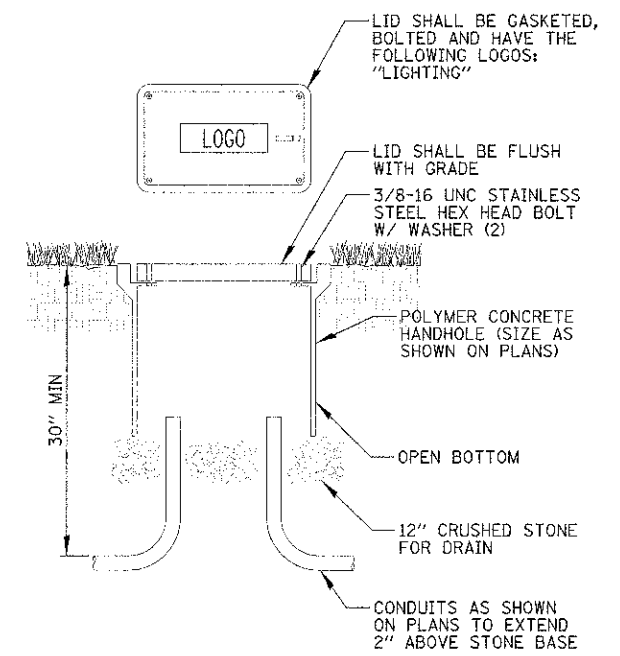
ONE LINE CIRCUIT DIAGRAM

N.T.S.

HANDHOLE SCHEDULE

ID #	SIZE
HH1-HH7 HH11-HH20	12"x12"x12" DEEP
HH8 HH9 HH21	11"x18"x18" DEEP
HH10	17"x30"x24" DEEP

- LEGEND**
- ROADWAY LIGHT POLE
 - ⊗ DECORATIVE LIGHT POLE
 - ⊙ EXISTING COMBINATION TRAFFIC SIGNAL LIGHT POLE
 - EXISTING ROADWAY LIGHT POLE
 - ⊗ EXISTING DECORATIVE LIGHT POLE
 - ELECTRIC LINE
 - ⏏ CONTROLLER
 - HANDHOLE
 - Ⓡ GROUND MOUNTED RECEPTACLE
 - Ⓡ TREE GRATE RECEPTACLE
 - LIGHT POLE NUMBER
 - LIGHTING CIRCUIT IDENTIFIER
 - P1-CKT 2,4(15) — (FESTOON CIRCUIT IDENTIFIER)
 - RECEPTACLE NUMBER
 - R1-CKT 27 — RECEPTACLE CIRCUIT IDENTIFIER
 - ROADWAY

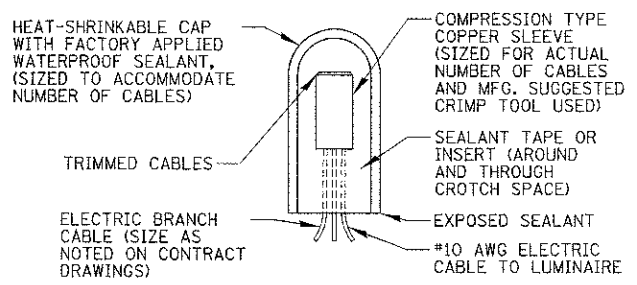


NOTES:

- ALL SPLICES SHALL BE WATERPROOF. SEE SPLICING DETAIL.
- POLYMER CONCRETE HANDHOLE AND LID SHALL BE GREY.
- BOX & LID SHALL MEET/EXCEED ANSI TIER 15 LOADING REQUIREMENTS, AND BE TESTED IN ACCORDANCE WITH THE LATEST EDITION OF THE ANSI/SCTE 77 "SPECIFICATION FOR UNDERGROUND ENCLOSURE INTEGRITY", AND THE PROVISIONS OF PARAGRAPHS 5.2.3 AND 5.2.4 OF WESTERN UNDERGROUND COMMITTEE GUIDE 3.6.

POLYMER CONCRETE HANDHOLE

N.T.S.



SPLICING ELECTRIC CABLE

N.T.S.

FILE NAME: 06.LDT_100362.dwg
USER NAME: asur000

DESIGNED: A/JD
DRAWN: KB, XWB
CHECKED: A/JD
DATE: 8/14/2012

REVISIONS:
REVISOR: -
REVISION: -
REVISOR: -
REVISION: -
REVISOR: -
REVISION: -

STATE OF ILLINOIS
DEPARTMENT OF TRANSPORTATION

LIGHTING DETAILS (2 OF 4)
SCALE: N.T.S. SHEET OF SHEETS: STA. TO STA.

CHRISTOPHER B. BURKE ENGINEERING, LTD.
9575 W. Higgins Road, Suite 600
Rosemont, Illinois 60018
(847) 823-0500

F.A. RTE.	SECTION	COUNTY	TOTAL SHEETS	SHEET NO.
	10-00149-00-LS	COOK	69	44
			CONTRACT NO. 63723	
ILLINOIS FED. AID PROJECT				