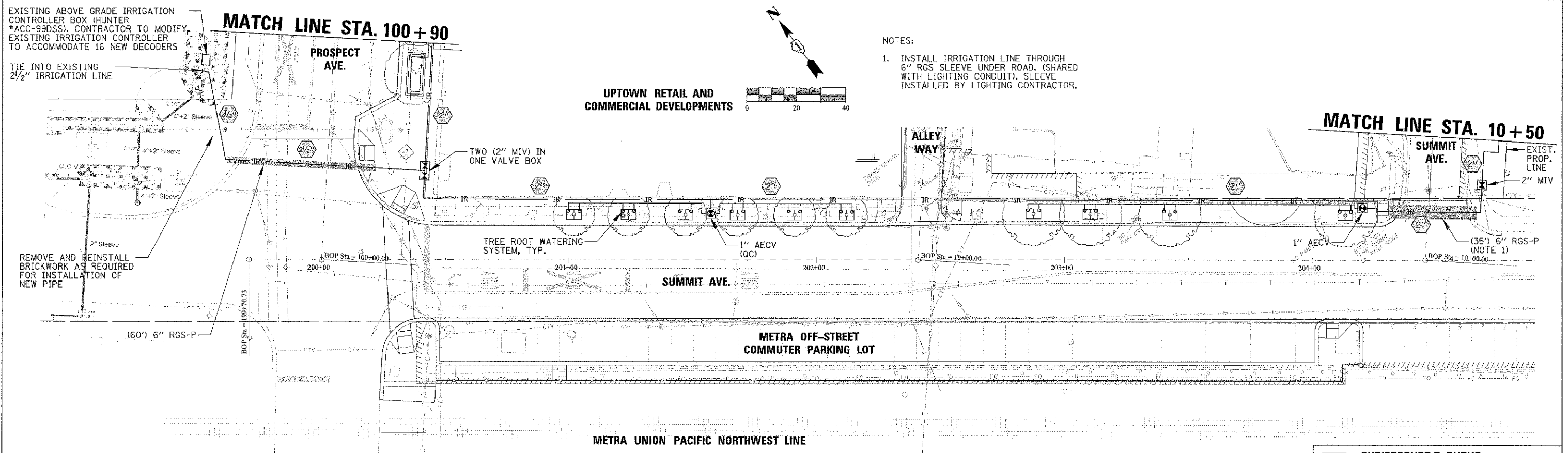


IRRIGATION LEGEND

- IR — IRRIGATION MAIN LINE, SDR 21 PVC PIPE (SIZE AS SHOWN) WITH 2 SETS OF (2/C #14 CONTROL CABLES) IN 1" SCH 40 PVC CONDUIT
- IRRIGATION BRANCH LINE, 1", SDR 21 PVC PIPE
- IRRIGATION DRIPLINE TUBING WITH EMITTERS SPACED AT 12" OC
- TREE ROOT WATERING SYSTEM
- ⊠ MANUAL ISOLATION VALVE IN VALVE BOX (MIV)
- ⊡ AUTOMATIC ELECTRIC CONTROL VALVE IN VALVE BOX (AECV)
- (QC) QUICK COUPLER
- ▬ 6" RIGID GALVANIZED STEEL SLEEVE
- ⊕ IRRIGATION MAINLINE PIPING SIZE

IRRIGATION BILL OF MATERIALS

| Description | Unit | Quantity |
|---------------------------|-------|----------|
| IRRIGATION SYSTEM SPECIAL | L SUM | 1 |



- NOTES:
- INSTALL IRRIGATION LINE THROUGH 6" RGS SLEEVE UNDER ROAD. (SHARED WITH LIGHTING CONDUIT). SLEEVE INSTALLED BY LIGHTING CONTRACTOR.

CHRISTOPHER B. BURKE ENGINEERING, LTD.
 9575 W. Higgins Road, Suite 600
 Rosemont, Illinois 60018
 (847) 823-0500

| | | | | | | | | | |
|-------------------------------|---------------------|--------------|--------------------|---|--|---------------------------|---------|--------|-----------------|
| FILE NAME = 09_10R_100302.dwg | USER NAME = tburton | DESIGNED JPC | REVISED | STATE OF ILLINOIS DEPARTMENT OF TRANSPORTATION | PROPOSED IRRIGATION PLAN (1 OF 2) PROSPECT AVENUE & SUMMIT AVENUE | F.A. RTL. | SECTION | COUNTY | TOTAL SHEET NO. |
| PLC1 SCALE = 20' | CHECKED JPC | REVISED | 10-00149-00-L5 | | | COOK | 69 | 47 | |
| PLST DATE = 3/21/2013 | DATE 8/14/2012 | REVISED | CONTRACT NO. 63723 | | | | | | |
| | | | | | | ILLINOIS FED. AID PROJECT | | | |