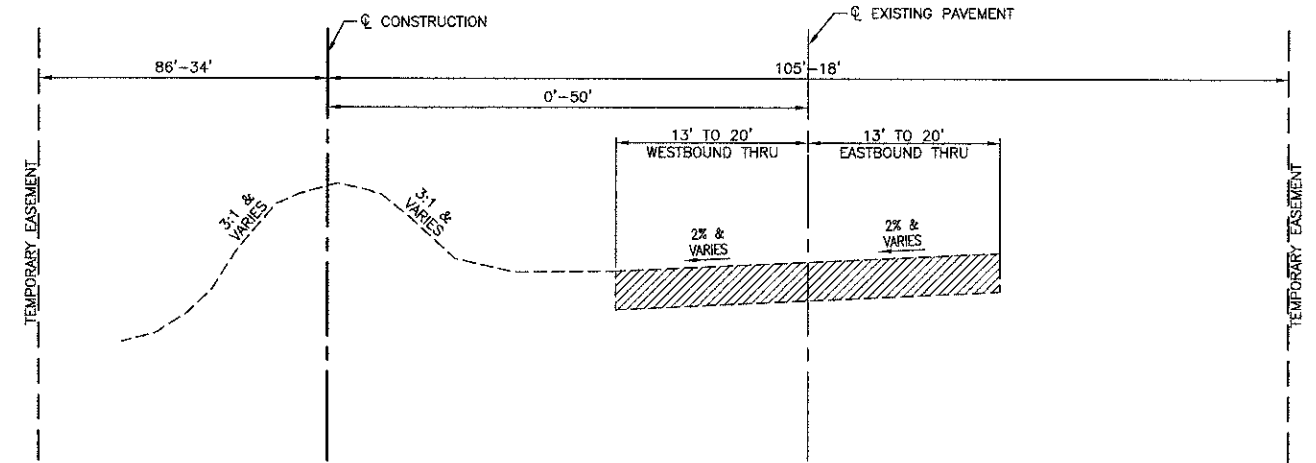
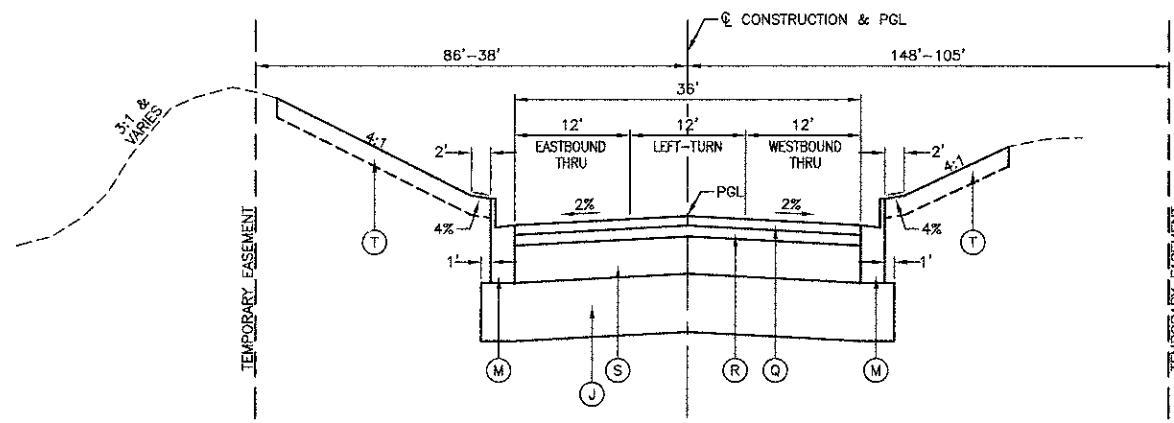


**PROPOSED TYPICAL SECTION**  
STA 50+85 TO STA 52+77, MATERIAL ROAD (WEST LEG)

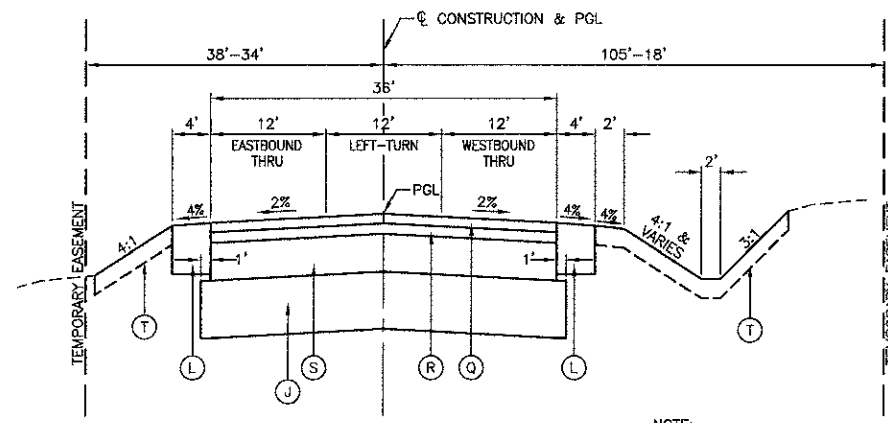
**NOTE:**  
1. WEST LEG WILL BE WITHIN VALLEY VIEW PUBLIC HIGH SCHOOL DISTRICT PROPERTY AND WILL NOT REQUIRE ROADWAY ROW. PROPOSED ROADWAY WILL BE CONSTRUCTED THRU FIELD.



**EXISTING TYPICAL SECTION**  
STA 54+33 TO STA 58+40.47, MATERIAL ROAD



**PROPOSED TYPICAL SECTION**  
STA 54+33 TO STA 55+25, MATERIAL ROAD (EAST LEG)



**PROPOSED TYPICAL SECTION**  
STA 55+25 TO STA 58+40.47, MATERIAL ROAD (EAST LEG)

**NOTE:**  
1. EAST LEG WILL BE WITHIN HANSON MATERIAL PROPERTY AND WILL NOT REQUIRE ROADWAY ROW.

**LEGEND**

- (A) EXISTING P.C.C. PAVEMENT - 9"-7"-9"
- (B) EXISTING HMA BASE COURSE - ±11"
- (C) EXISTING HMA RESURFACING - ±6.5"
- (D) EXISTING AGGREGATE SHOULDER - ±8"
- (E) EXISTING HMA SHOULDER - 8"
- (F) PROPOSED HMA SURFACE REMOVAL - 2½"
- (G) PROPOSED POLYMERIZED HMA SURFACE COURSE, MIX "F", N90 - 1¾"
- (H) PROPOSED POLYMERIZED LEVELING BINDER (MACHINE METHOD) IL-4.75, N50 - ¾"
- (I) PROPOSED HMA BASE COURSE (HMA BINDER IL-19mm), N90 - 10½"
- (J) PROPOSED AGGREGATE SUBGRADE - 12"
- (K) PROPOSED HMA SHOULDER (HMA BINDER IL-19mm), N50 - 10"
- (L) PROPOSED AGGREGATE SHOULDER, TYPE B - 8"
- (M) PROPOSED COMB. CONCRETE CURB AND GUTTER, TYPE 6-6.24
- (N) PROPOSED COMB. CONCRETE CURB AND GUTTER, TYPE 6-6.18
- (O) PROPOSED HMA SURFACE COURSE, MIX "D", N50 - 2"
- (P) PROPOSED HMA BINDER COURSE, IL-19.0, N50 - 7"
- (Q) PROPOSED POLYMERIZED HMA SURFACE COURSE, MIX "F", N90 - 2"
- (R) PROPOSED POLYMERIZED HMA BINDER COURSE, IL-19.0, N90 - 2¾"
- (S) PROPOSED HMA BINDER COURSE, IL-19.0, N90 - 7¾"
- (T) TOPSOIL - 4", SEEDING, CLASS 2A
- [Hatched Box] ITEM TO BE REMOVED

FILE NAME = 08361\_02-TYPK01 - P03

USER NAME =	DESIGNED -- WPD	REVISED -- 01-07-13 - TEMP EASE
PLOT SCALE =	CHECKED -- PB	REVISED --
PLOT DATE = 02-28-18	DRAWN -- RG	REVISED --
	CHECKED -- AG	REVISED --

STATE OF ILLINOIS  
DEPARTMENT OF TRANSPORTATION

INTERSECTION IMPROVEMENT  
IL RTE 53 AT MATERIAL ROAD  
TYPICAL SECTIONS

SCALE:	SHEET NO. 9 OF 54 SHEETS	STA. TO STA.	F.A.P. RTE. 112	SECTION 09-00055-00-CH	COUNTY WILL	TOTAL SHEETS 54	SHEET NO. 9
			FED. ROAD DIST. NO. 1	ILLINOIS	FED. AID PROJECT M-9003(B29)	CONTRACT NO. 63753	