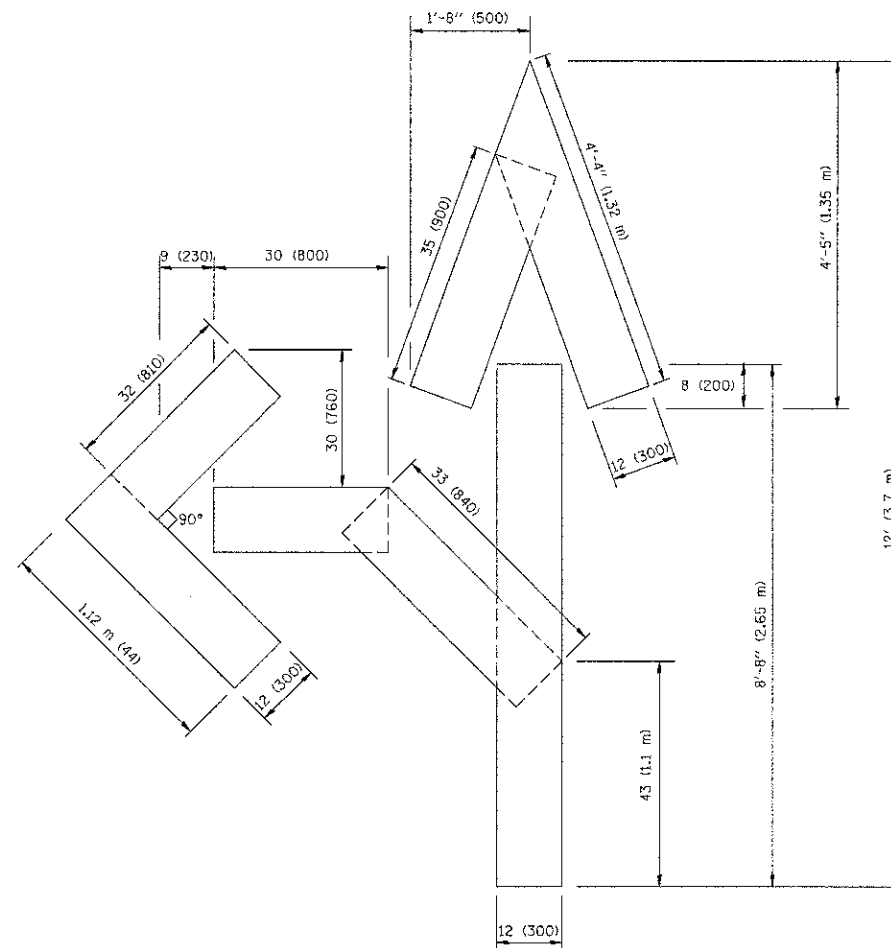
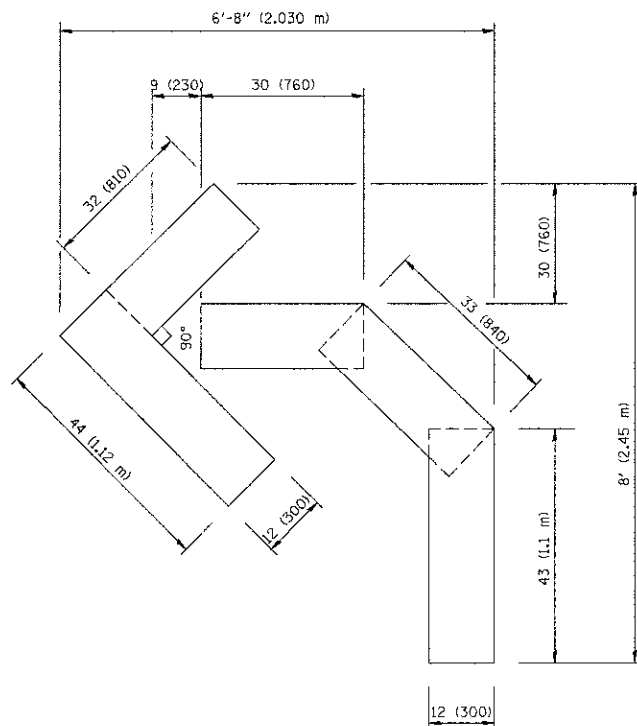


QUANTITY  
 4 (100) LINE = 64.1 ft. (19.7 m)  
 21.1 sq. ft. (1.97 sq. m)



QUANTITY  
 4 (100) LINE = 82.5 ft. (25.3 m)  
 27.5 sq. ft. (2.53 sq. m)



QUANTITY  
 4 (100) LINE = 45.5 ft. (13.9 m)  
 15.2 sq. ft. (1.39 sq. m)

All dimensions are in inches (millimeters) unless otherwise shown.

FILE NAME = 08361\_02-DTLS-01-TC16 - TC-16

USER NAME = gaglianobt  
 PLOT SCALE = 50.0000 / IN.  
 PLOT DATE = 1/4/2008

DESIGNED --  
 CHECKED --  
 DRAWN --  
 CHECKED -- 09-18-94

REVISED --T. RAMMACHER 06-05-96  
 REVISED --T. RAMMACHER 11-04-97  
 REVISED --T. RAMMACHER 03-02-98  
 REVISED --E. GOMEZ 08-28-00

STATE OF ILLINOIS  
 DEPARTMENT OF TRANSPORTATION

PAVEMENT MARKING LETTERS AND SYMBOLS  
 FOR TRAFFIC STAGING

SCALE: SHEET NO. 41 OF 54 SHEETS STA. TO STA.

F.A.P. RIE	SECTION	COUNTY	TOTAL SHEETS	SHEET NO.
112	09-0055-00-CH	WILL	54	41
<b>TC-16</b>			CONTRACT NO. 63753	
FED. ROAD DIST. NO. 1 ILLINOIS FED. AID PROJECT M-9003(929)				