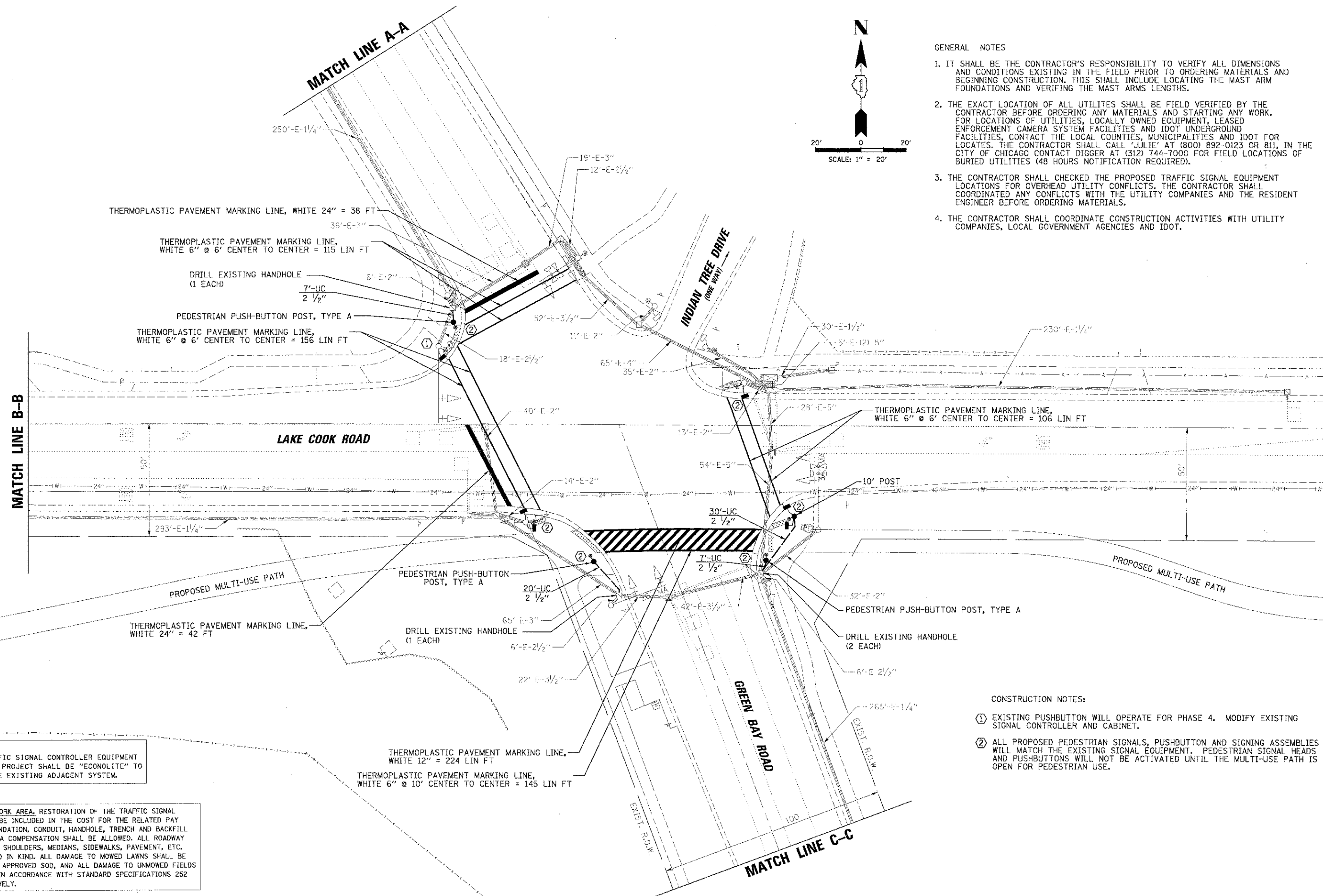


**GENERAL NOTES**

1. IT SHALL BE THE CONTRACTOR'S RESPONSIBILITY TO VERIFY ALL DIMENSIONS AND CONDITIONS EXISTING IN THE FIELD PRIOR TO ORDERING MATERIALS AND BEGINNING CONSTRUCTION. THIS SHALL INCLUDE LOCATING THE MAST ARM FOUNDATIONS AND VERIFYING THE MAST ARMS LENGTHS.
2. THE EXACT LOCATION OF ALL UTILITIES SHALL BE FIELD VERIFIED BY THE CONTRACTOR BEFORE ORDERING ANY MATERIALS AND STARTING ANY WORK. FOR LOCATIONS OF UTILITIES, LOCALLY OWNED EQUIPMENT, LEASED ENFORCEMENT CAMERA SYSTEM FACILITIES AND IDOT UNDERGROUND FACILITIES, CONTACT THE LOCAL COUNTIES, MUNICIPALITIES AND IDOT FOR LOCATES. THE CONTRACTOR SHALL CALL 'JULIE' AT (800) 892-0123 OR 811, IN THE CITY OF CHICAGO CONTACT DIGGER AT (312) 744-7000 FOR FIELD LOCATIONS OF BURIED UTILITIES (48 HOURS NOTIFICATION REQUIRED).
3. THE CONTRACTOR SHALL CHECKED THE PROPOSED TRAFFIC SIGNAL EQUIPMENT LOCATIONS FOR OVERHEAD UTILITY CONFLICTS. THE CONTRACTOR SHALL COORDINATED ANY CONFLICTS WITH THE UTILITY COMPANIES AND THE RESIDENT ENGINEER BEFORE ORDERING MATERIALS.
4. THE CONTRACTOR SHALL COORDINATE CONSTRUCTION ACTIVITIES WITH UTILITY COMPANIES, LOCAL GOVERNMENT AGENCIES AND IDOT.



**CONSTRUCTION NOTES:**

- ① EXISTING PUSHBUTTON WILL OPERATE FOR PHASE 4. MODIFY EXISTING SIGNAL CONTROLLER AND CABINET.
- ② ALL PROPOSED PEDESTRIAN SIGNALS, PUSHBUTTON AND SIGNING ASSEMBLIES WILL MATCH THE EXISTING SIGNAL EQUIPMENT. PEDESTRIAN SIGNAL HEADS AND PUSHBUTTONS WILL NOT BE ACTIVATED UNTIL THE MULTI-USE PATH IS OPEN FOR PEDESTRIAN USE.

NOTE:  
THE TRAFFIC SIGNAL CONTROLLER EQUIPMENT FOR THIS PROJECT SHALL BE "ECONOLITE" TO MATCH THE EXISTING ADJACENT SYSTEM.

RESTORATION OF WORK AREA, RESTORATION OF THE TRAFFIC SIGNAL WORK AREA SHALL BE INCLUDED IN THE COST FOR THE RELATED PAY ITEM SUCH AS FOUNDATION, CONDUIT, HANDHOLE, TRENCH AND BACKFILL ETC., AND NO EXTRA COMPENSATION SHALL BE ALLOWED. ALL ROADWAY SURFACES SUCH AS SHOULDERS, MEDIANS, SIDEWALKS, PAVEMENT, ETC. SHALL BE REPLACED IN KIND. ALL DAMAGE TO MOWED LAWNS SHALL BE REPLACED WITH AN APPROVED SOD, AND ALL DAMAGE TO UNMOWED FIELDS SHALL BE SEEDED IN ACCORDANCE WITH STANDARD SPECIFICATIONS 252 AND 250 RESPECTIVELY.

9575 W. Higgins Road, Suite 600 Rosemont, Illinois 60018 (647) 823-0500		USER NAME = athomas	DESIGNED - WCE	REVISED -	<b>STATE OF ILLINOIS</b> <b>DEPARTMENT OF TRANSPORTATION</b>	<b>TRAFFIC SIGNAL MODERNIZATION PLAN</b> <b>LAKE COOK ROAD AND GREEN BAY ROAD</b> <b>(SHEET 1 OF 2)</b>			F.A.J. RTE. = 3726	SECTION = 10-F3000-22-BT	COUNTY = COOK/LAKE	TOTAL SHEETS = 89	SHEET NO. = 39
		PL01 SCALE = 20'	DRAWN - FCP	REVISED -		SCALE: 1" = 20'	SHEET NO. OF SHEETS	STA. TO STA.	CONTRACT NO. 63781	ILLINOIS FED. AID PROJECT			
		PL01 DATE = 4/23/2013	CHECKED - GMZ	REVISED -									
			DATE = 4/11/13	REVISED -									