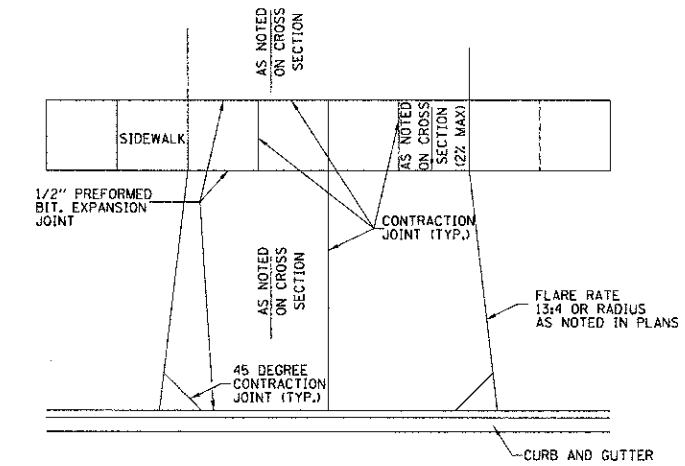
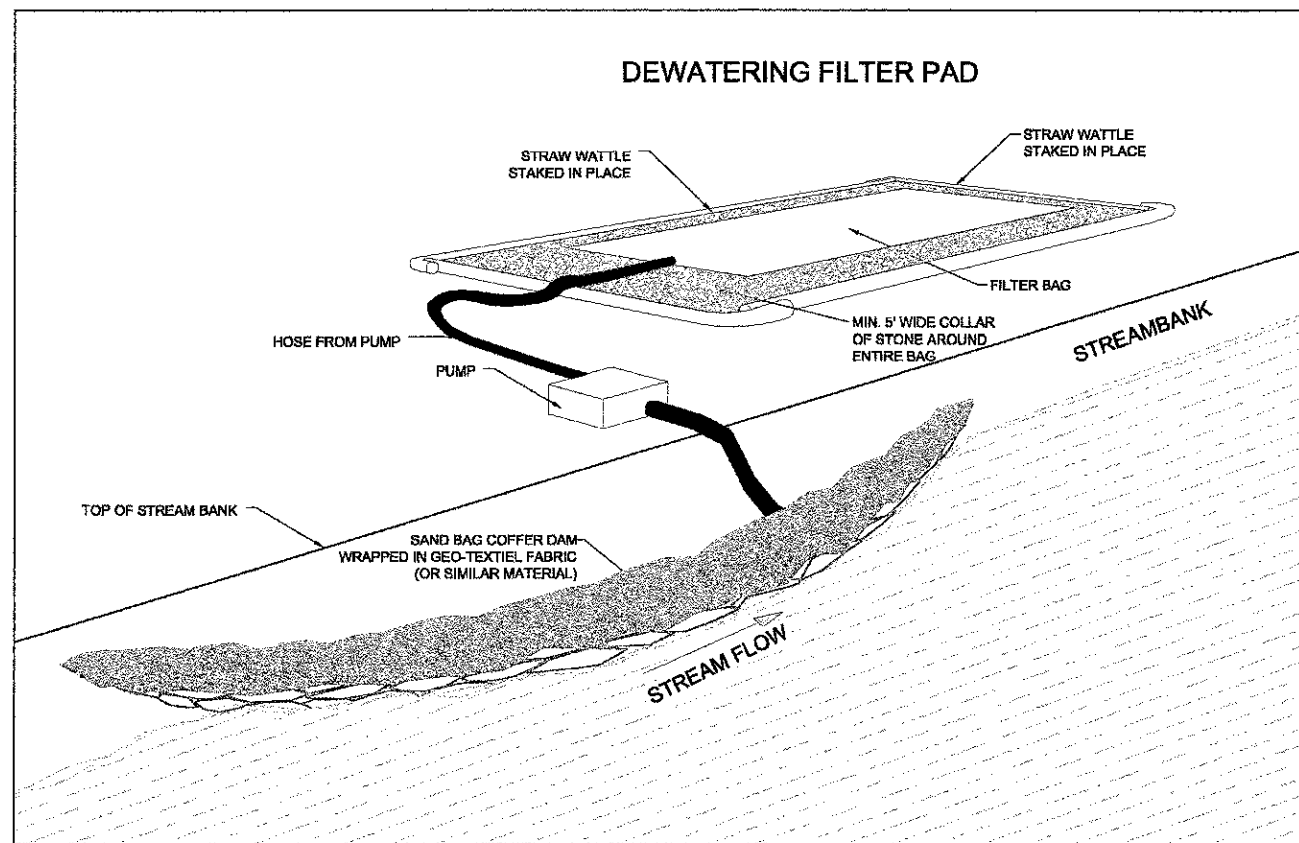


TREE & ROOT PROTECTION
N.T.S.



- NOTE:
- COMMERCIAL DRIVEWAYS -
 - HMA CE SHALL BE HOT-MIX ASPHALT SURFACE COURSE, MIX "D", NSQ; 2" ON HOT-MIX ASPHALT BINDER COURSE, IL-19.0, NSQ; 6" ON AGGREGATE BASE COURSE, TYPE B; 2"
 - CONC CE SHALL BE PCC DRIVEWAY PAVEMENT 8" ON AGGREGATE BASE COURSE, TYPE B; 2"
 - CROSS SLOPE OF PCC SIDEWALK SHALL NOT BE STEEPER THAN 2%.
 - RESIDENTIAL DRIVEWAYS -
 - HMA PE SHALL BE HOT-MIX ASPHALT SURFACE COURSE, MIX "D", NSQ; 2" ON HOT-MIX ASPHALT BINDER COURSE, IL-19.0, NSQ; 4" ON AGGREGATE BASE COURSE, TYPE B; 2"
 - CONC PE SHALL BE PCC DRIVEWAY PAVEMENT 6" ON AGGREGATE BASE COURSE, TYPE B; 2"
 - CROSS SLOPE OF PCC SIDEWALK SHALL NOT BE STEEPER THAN 2%.
 - OMIT EXPANSION AND CONTRACTION JOINTS IN HMA CE.

ENTRANCE DETAIL
N.T.S.



SANDBAG COFFERDAM

A sandbag cofferdam should be installed by hand during low-flow conditions in order to isolate the streambank stabilization work from the flows of Salt Creek. If at the time of construction the contractor believes that a cofferdam is not necessary to perform the work, the contractor shall gain approval from the Corps to proceed without installing a cofferdam. An impermeable liner such as visqueen (minimum 40 ml thick) shall be placed in the creek and the sandbags which also must be constructed of an impermeable material shall be stacked in an alternating pattern upon the liner. The liner shall be placed such that it may be wrapped over the sandbags towards the shore to create a seal. Sandbag cofferdam should be installed in a C-Shape design along the portion of the streambank requiring restoration. Following cofferdam installation, a pump equipped with a sediment bag will be used to dewater the area between the cofferdam and the streambank (see detail). The dewatering bag shall be placed as far from the creek as possible to maximize the time for sediment removal. The pump must be floated on top of the water to minimize the intake of sediment. The cofferdam and pump must be maintained as necessary to allow the contractor to work "in the dry" and to control sediment. Following completion of the streambank restoration work, the sandbag cofferdam will be removed by hand starting with the downstream side in order to not impede water flows. Stabilization of upland areas may be required following removal of the sediment bag filter pad and should be completed using the specified native seed mix.

In no case shall the sandbag cofferdam be installed for greater than 30 days.

FILE NAME =	USER NAME = orozojan	DESIGNED - JA	REVISED -	STATE OF ILLINOIS DEPARTMENT OF TRANSPORTATION	CARRIAGE WAY DRIVE CONSTRUCTION DETAILS	F.A.U. RTE	SECTION	COUNTY	TOTAL SHEETS	SHEET NO.	
PLLOT SCALS = 20'	CHECKED - JGS	REVISED -								34	16
PLLOT DATE = 2/12/2013	DATE - 11/30/12	REVISED -									
						SCALE: N.T.S.	SHEET NO.	OF	SHEETS	STA.	TO STA.
						CONTRACT NO. 63787		FED. ROAD DIST. NO. ILLINOIS FED. AID PROJECT			