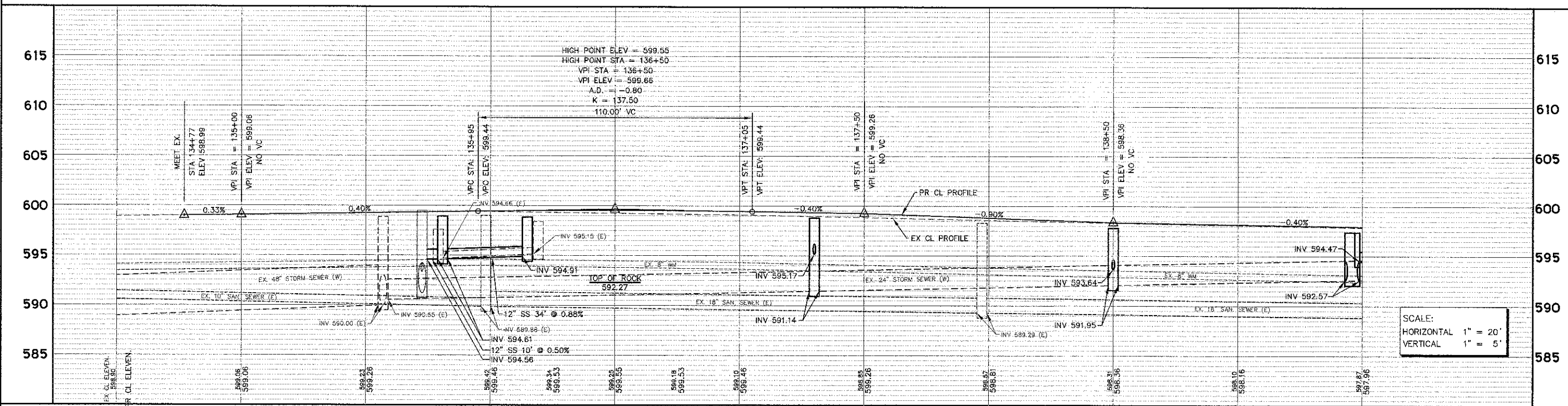


- NOTES:
1. ALL PROPOSED CATCH BASINS SHALL HAVE A 15" SUMP.
 2. THE GENERAL CONTRACTOR IS REQUIRED TO HIRE AN ENVIRONMENTAL FIRM WITH AT LEAST FIVE (5) DOCUMENTED LEAKING UNDERGROUND STORAGE TANK CLEANUPS OR THAT IS PRE-QUALIFIED IN HAZARDOUS WASTE BY THE DEPARTMENT TO REMEDIATE THE SOIL CONTAMINATION AND MONITOR FOR WORKER PROTECTION.



SCALE:
 HORIZONTAL 1" = 20'
 VERTICAL 1" = 5'

| | | | | | | | | | |
|--|--|---|--|---|--|--|---|--|---|
| Engineering Enterprises, Inc. CONSULTING ENGINEERS 52 Wheeler Road Sugar Grove, Illinois 60554 630.466.6700 / www.eetweb.com | | USER NAME = Jim Schmidt PLOT SCALE = PLOT DATE = February 8, 2013 | DESIGNED - JRL & SWM DRAWN - CLN CHECKED - JL DATE - 11/13/12 | REVISED - JPS 02/08/13 REVISED - REVISED - REVISED - | STATE OF ILLINOIS DEPARTMENT OF TRANSPORTATION | | IL 171 (STATE STREET) DRAINAGE AND UTILITY PLAN AND PROFILE | | F.A.P. RTE. = 577 SECTION = 10-00068-00-TL COUNTY = WILL TOTAL SHEETS = 65 SHEET NO. = 22 CONTRACT NO. = 63788 FED. ROAD DIST. NO. 1 ILLINOIS FED. AID PROJECT M-903(619) |
|--|--|---|--|---|--|--|---|--|---|

February 8, 2013 @ 9:26 AM By: jim.schmidt Tab: 22 Route 171-22-34