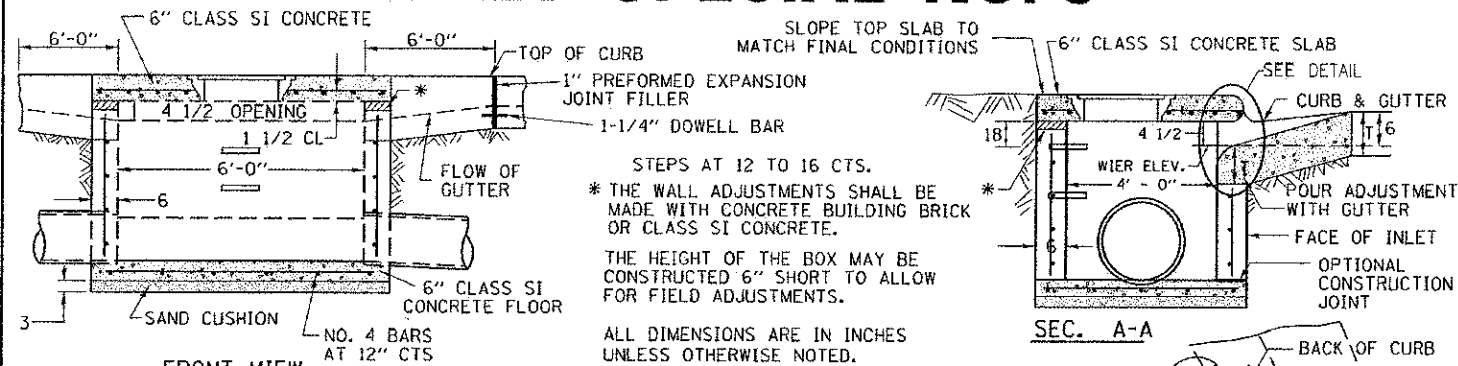


# INLET SPECIAL NO. 3



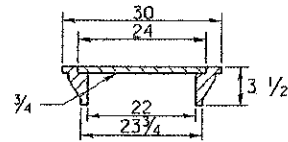
FRONT VIEW

### NOTES

SEE STANDARD 602701 FOR DETAILS OF STEPS.  
1" PREFORMED EXPANSION JOINTS AS SHOWN SHALL BE PROVIDED ON EACH SIDE OF INLET.  
CLASS SI CONCRETE OR PRECAST CONCRETE SHALL BE USED THROUGHOUT.  
THE SIDE WALLS MAY BE BUILT AS PRECAST SEGMENTAL SECTIONS.  
REINFORCEMENT FOR INLET SPECIAL NO. 3 SHALL BE ACCORDING TO REINFORCEMENT DETAIL BELOW.

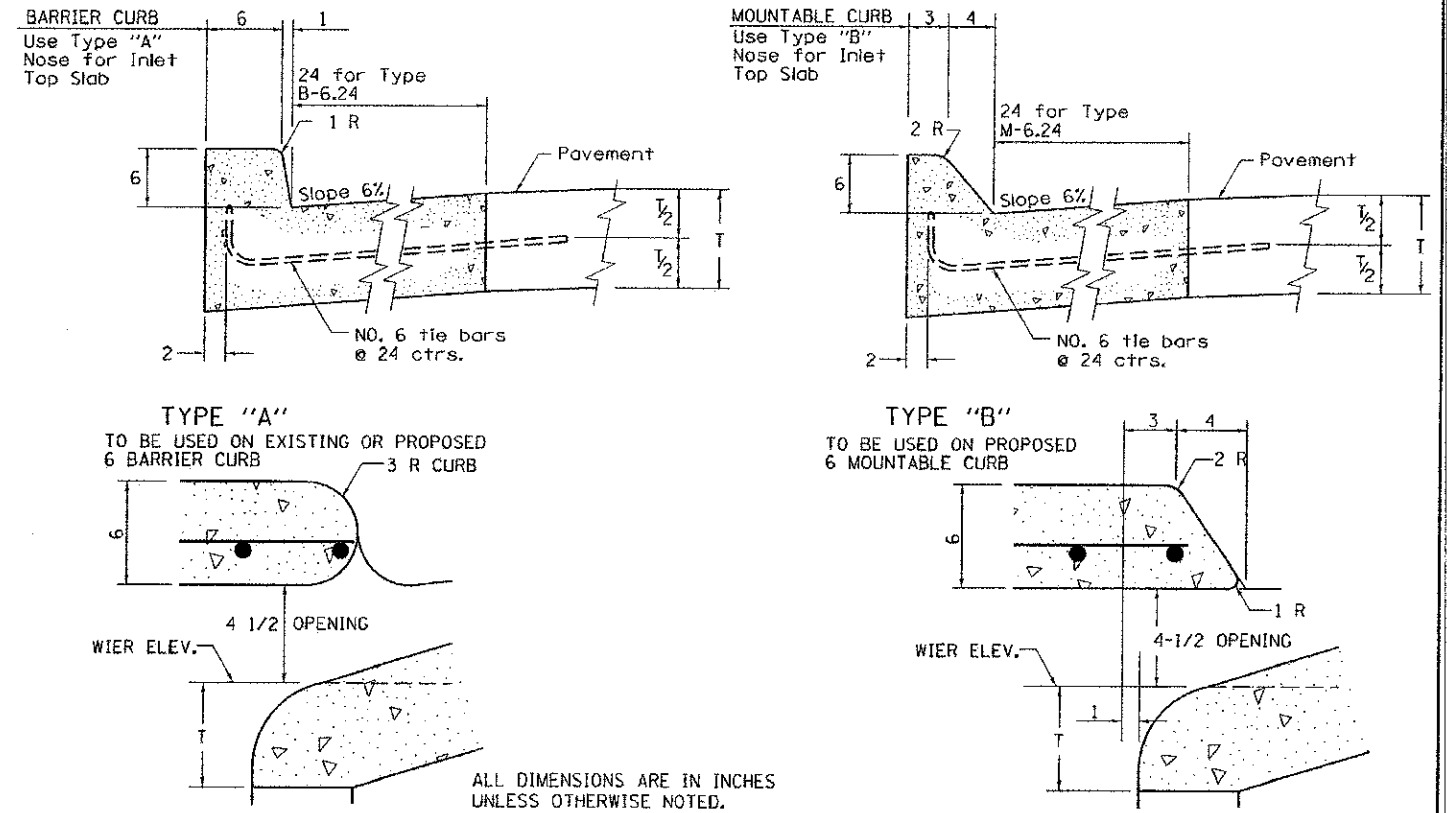
STEPS SHALL BE OMITTED WHEN DEPTH OF INLET IS LESS THAN 5 FOOT  
THE INLET SHALL BE CAST IN PLACE OR PRECAST.  
EXCEPT AS NOTED HEREON INLET SPECIAL NO. 3 SHALL BE CONSTRUCTED IN ACCORDANCE WITH SECTION 602 OF THE STANDARD SPECIFICATIONS.  
THE CONTRACT UNIT PRICE EACH FOR INLET SPECIAL NO. 3 SHALL INCLUDE THE COST OF FURNISHING AND INSTALLING THE FRAME, LID, REINFORCEMENT BARS, FLOOR AND TOP SLABS, CAST IRON STEPS (IF USED).  
THE CURB AND GUTTER WILL BE PAID FOR SEPARATELY AND WILL BE MEASURED THROUGH THE INLET.  
THE CURB AND GUTTER ADJACENT TO AND 6 FOOT ON EITHER SIDE OF THE INLET SHALL BE CONSTRUCTED AS SHOWN WITH NO ADDITIONAL COMPENSATION FOR THE TRANSITION.  
ALL PIPE UNDERDRAIN CONNECTIONS WHEN SPECIFIED SHALL BE DONE IN ACCORDANCE WITH ART. 601 OF THE STANDARD SPECIFICATIONS. THIS WORK WILL BE PAID FOR AT THE CONTRACT UNIT PRICE PER (FOOT) FOR PIPE UNDERDRAINS (SPECIAL) OF THE DIAMETER SPECIFIED WHICH PRICE SHALL INCLUDE THE CAY OR CA16 AND THE CONNECTION TO THE INLET.

### LIGHT WEIGHT MANHOLE CASTING

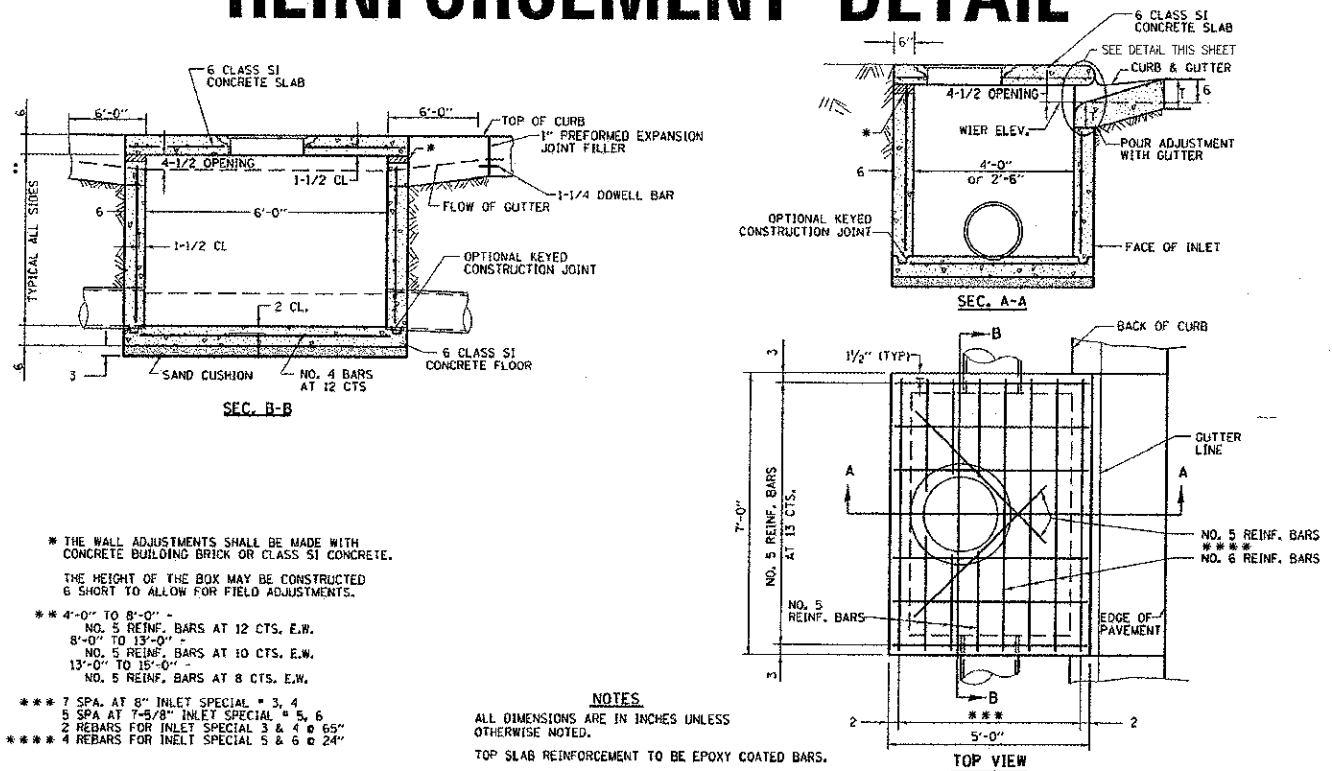


TOTAL WEIGHT 160 LBS.

# NOSE TYPE FOR INLET TOP SLAB



# INLET SPECIAL NO. 3, 4, 5, 6 REINFORCEMENT DETAIL



### NOTES

ALL DIMENSIONS ARE IN INCHES UNLESS OTHERWISE NOTED.  
TOP SLAB REINFORCEMENT TO BE EPOXY COATED BARS.

STATE OF ILLINOIS  
DEPARTMENT OF TRANSPORTATION

SPECIAL DETAILS

COPYRIGHT © 2013 ENGINEERING ENTERPRISES, INC.

Engineering Enterprises, Inc.  
CONSULTING ENGINEERS  
52 Wheeler Road  
Sugar Grove, Illinois 60554  
630.466.6700 / www.eelw.com

USER NAME = Larry Nolan  
DESIGNED - JRL & SWM  
DRAWN - CLN  
CHECKED - JL  
DATE - 11/13/12

REVISOR - JPS 02/08/13  
REVISOR -  
REVISOR -  
REVISOR -

SCALE: N.T.S. SHEET NO. 3 OF 3 SHEETS STA. TO STA.

F.A.P. RTE. 577 SECTION 10-00068-00-TL COUNTY WILL TOTAL SHEETS 65 SHEET NO. 38 CONTRACT NO. 63788

FED. ROAD DIST. NO. 1 ILLINOIS FED. AID PROJECT M-9003(619)