

EXISTING BIKE PATH

EXIST. CURVE EX_PATH-1 PI STA. = 30+880.99 Δ = 18° 17' 50" (RT) D = 17° 37' 46" R = 325.00' T = 52.34' L = 103.79' E = 4.19' P.C. STA. = 30+828.65 P.T. STA. = 30+932.44	EXIST. CURVE EX_PATH-2 PI STA. = 31+021.66 Δ = 16° 54' 56" (RT) D = 9° 32' 57" R = 600.00' T = 89.22' L = 177.14' E = 6.60' P.C. STA. = 30+932.44 P.T. STA. = 31+109.58	EXIST. CURVE EX_PATH-3 PI STA. = 31+171.93 Δ = 2° 51' 27" (LT) D = 2° 17' 31" R = 2,500.00' T = 62.35' L = 124.68' E = 0.78' P.C. STA. = 31+109.58 P.T. STA. = 31+234.25	EXIST. CURVE EX_PATH-4 PI STA. = 31+337.38 Δ = 48° 17' 54" (RT) D = 24° 54' 40" R = 230.00' T = 103.12' L = 193.88' E = 22.06' P.C. STA. = 31+234.25 P.T. STA. = 31+428.14	EXIST. CURVE EX_PATH-5 PI STA. = 31+548.69 Δ = 41° 17' 13" (RT) D = 17° 54' 18" R = 320.00' T = 120.56' L = 230.59' E = 21.96' P.C. STA. = 31+428.14 P.T. STA. = 31+658.73
---	--	---	---	---

ROLLINS ROAD

EXIST. CURVE EX_ROLLINS-1 PI STA. = 35+752.70 Δ = 36° 22' 59" (LT) D = 4° 00' 24" R = 1,430.00' T = 469.93' L = 908.05' E = 75.23' P.C. STA. = 35+282.77 P.T. STA. = 36+190.83	EXIST. CURVE EX_ROLLINS-2 PI STA. = 37+476.86 Δ = 2° 13' 46" (RT) D = 0° 11' 28" R = 30,000.00' T = 583.72' L = 1,167.29' E = 5.68' P.C. STA. = 36+893.14 P.T. STA. = 38+060.43
---	--

PROPOSED BIKE PATH - NORTH

PROP. CURVE RBP_01UN-6 PI STA. = 108+80.99 Δ = 18° 17' 50" (RT) D = 17° 37' 46" R = 325.00' T = 52.34' L = 103.79' E = 4.19' P.C. STA. = 108+28.65 P.T. STA. = 109+32.44	PROP. CURVE RBP_01UN-7 PI STA. = 109+55.40 Δ = 4° 23' 02" (RT) D = 9° 32' 57" R = 600.00' T = 22.97' L = 45.91' E = 0.44' P.C. STA. = 109+32.44 P.T. STA. = 109+78.35	PROP. CURVE RBP_01UN-8 PI STA. = 112+51.69 Δ = 68° 41' 38" (LT) D = 14° 19' 26" R = 400.00' T = 273.34' L = 479.57' E = 84.47' P.C. STA. = 109+78.35 P.T. STA. = 114+57.92
---	--	---

PROP. CURVE RBP_01UN-9 PI STA. = 115+11.19 Δ = 28° 28' 02" (LT) D = 27° 17' 01" R = 210.00' T = 53.27' L = 104.34' E = 6.65' P.C. STA. = 114+57.92 P.T. STA. = 115+62.26	PROP. CURVE RBP_01UN-10 PI STA. = 117+98.70 Δ = 69° 19' 00" (LT) D = 38° 11' 50" R = 150.00' T = 103.70' L = 181.47' E = 32.36' P.C. STA. = 116+95.00 P.T. STA. = 118+76.47	PROP. CURVE RBP_01UN-11 PI STA. = 119+57.17 Δ = 56° 33' 43" (RT) D = 38° 11' 50" R = 150.00' T = 80.70' L = 148.08' E = 20.33' P.C. STA. = 118+76.47 P.T. STA. = 120+24.55	PROP. CURVE RBP_01UN-12 PI STA. = 122+12.59 Δ = 89° 03' 11" (LT) D = 114° 35' 30" R = 50.00' T = 49.18' L = 77.71' E = 20.13' P.C. STA. = 121+63.41 P.T. STA. = 122+41.12
---	--	---	--

PROPOSED BIKE PATH - SOUTH

PROP. CURVE RBP_01US-13 PI STA. = 108+31.94 Δ = 41° 17' 13" (LT) D = 17° 54' 18" R = 320.00' T = 120.56' L = 230.59' E = 21.96' P.C. STA. = 107+11.38 P.T. STA. = 109+41.97	PROP. CURVE RBP_01US-14 PI STA. = 110+14.60 Δ = 35° 02' 59" (LT) D = 24° 54' 40" R = 230.00' T = 72.63' L = 140.70' E = 11.19' P.C. STA. = 109+41.97 P.T. STA. = 110+82.67	PROP. CURVE RBP_01US-15 PI STA. = 112+34.65 Δ = 113° 18' 34" (RT) D = 57° 17' 45" R = 100.00' T = 151.97' L = 197.76' E = 81.92' P.C. STA. = 110+82.67 P.T. STA. = 112+80.43
--	---	---

PROJECT COORDINATES - ROLLINS ROAD

Description	Station	North	East
POT	334+70	2082800.78	1068427.68
PC	352+83	2081961.71	1070034.57
PT	361+91	2081816.17	1070915.51
PC	368+93	2081923.74	1071609.54
PT	380+60	2082080.05	1072766.24

PROJECT COORDINATES - EXISTING PATH

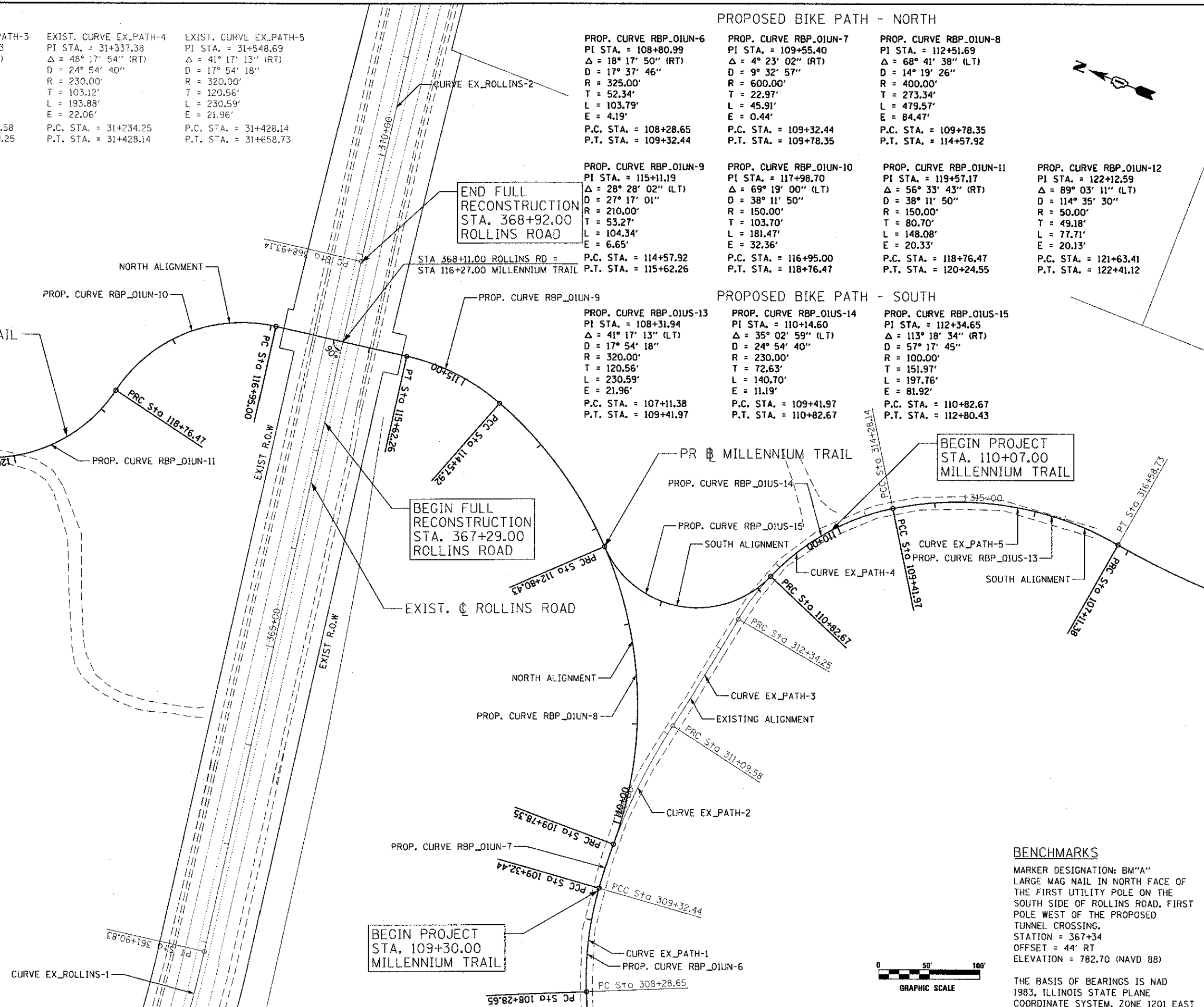
Description	Station	North	East
POT	308+00	2081438.64	1070991.35
PC	308+29	2081450.22	1071017.55
PCC	309+32	2081476.42	1071117.52
PRC	311+10	2081467.42	1071293.79
PRC	312+34	2081445.88	1071416.58
PCC	314+28	2081344.29	1071575.00
PT	316+59	2081124.04	1071623.98

PROJECT COORDINATES - PROPOSED PATH (NORTH ALIGNMENT)

Description	Station	North	East
PC	108+29	2081450.22	1071017.55
PCC	109+32	2081476.42	1071117.52
PRC	109+78	2081479.09	1071163.34
PCC	114+58	2081744.38	1071528.52
PT	115+62	2081847.18	1071538.28
PC	116+95	2081978.36	1071517.95
PRC	118+76	2082102.17	1071400.58
PT	120+25	2082193.83	1071291.94
PC	121+63	2082322.97	1071240.90
PRC	122+41	2082351.39	1071176.79

PROJECT COORDINATES - PROPOSED PATH (SOUTH ALIGNMENT)

Description	Station	North	East
PRC	107+11	2081124.04	1071623.98
PCC	109+42	2081344.29	1071575.00
PRC	110+83	2081432.02	1071467.80
PRC	112+80	2081595.69	1071434.28



BENCHMARKS
 MARKER DESIGNATION: BM "A"
 LARGE MAG NAIL IN NORTH FACE OF THE FIRST UTILITY POLE ON THE SOUTH SIDE OF ROLLINS ROAD. FIRST POLE WEST OF THE PROPOSED TUNNEL CROSSING.
 STATION = 367+34
 OFFSET = 44' RT
 ELEVATION = 782.70 (NAVD 88)
 THE BASIS OF BEARINGS IS NAD 1983, ILLINOIS STATE PLANE COORDINATE SYSTEM, ZONE 1201 EAST



FILE NAME = M:\PROJ\022007\01\Rollins\Design\Main\Sheet\022007-01-alignments.dwg

Ciorba Group, Inc.
 CONSULTING ENGINEERS
 6507 North Cumberland Avenue, Suite 402
 Chicago, Illinois 60656
 Tel. 773.775.4009 Fax 773.775.4014

USER NAME = jkellman	DESIGNED -	REvised -
PLOT SCALE = 1/8" = 100.0000' / 1"	DRAWN -	REvised -
PLOT DATE = 4/8/2013	CHECKED -	REvised -
	DATE -	REvised -

**MILLENNIUM TRAIL
 LAKE COUNTY FOREST PRESERVES**

**ALIGNMENTS, TIES, AND BENCHMARKS
 ROLLINS ROAD UNDERPASS**

SCALE:	SHEET NO. OF SHEETS	STA. TO STA.
--------	---------------------	--------------

F.A.U. RTE. 181	SECTION 12-F3000-01-BT	COUNTY LAKE	TOTAL SHEETS 118	SHEET NO. 16
FED. ROAD DIST. NO. - ILLINOIS FED. AID PROJECT				CONTRACT NO. 63807