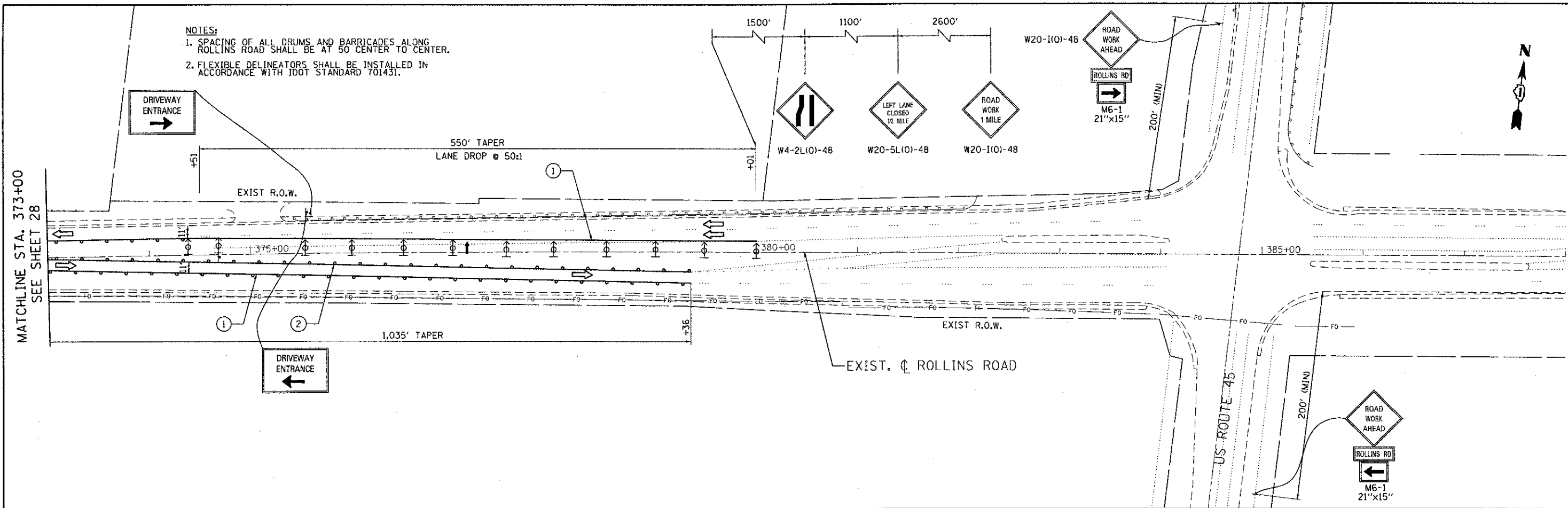
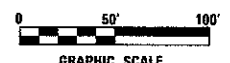


NOTES:  
 1. SPACING OF ALL DRUMS AND BARRICADES ALONG ROLLINS ROAD SHALL BE AT 50' CENTER TO CENTER.  
 2. FLEXIBLE DELINEATORS SHALL BE INSTALLED IN ACCORDANCE WITH IDOT STANDARD 701431.



**LEGEND**

- WORK ZONE
- DIRECTION OF TRAVEL
- DRUM W/ STEADY BURN LIGHT
- BARRICADE, TYPE III
- ARROW BOARD
- DIRECTION INDICATOR BARRICADE WITH STEADY BURN MONODIRECTIONAL LIGHT
- TEMPORARY CONCRETE BARRIER WITH REFLECTORS
- TEMPORARY PAVEMENT, 8" (HMA BINDER IL-19.0mm)
- SUGGESTED STABILIZED CONSTRUCTION ENTRANCE
- ① WET REFLECTIVE TEMPORARY TAPE, TYPE III 4 INCH (WHITE)
- ② WET REFLECTIVE TEMPORARY TAPE, TYPE III 4 INCH (YELLOW)
- ③ WET REFLECTIVE TEMPORARY TAPE, TYPE III 4 INCH (YELLOW DOUBLE LINE)
- TYPE II BARRICADE WITH STEADY BURN MONODIRECTIONAL LIGHT



FILE NAME = N:\PROJ\10220087.01\Rollins\Design\10220087.01-stageing\_P1402.dwg

**Ciorba Group, Inc.**  
 CONSULTING ENGINEERS  
 5507 North Cumberland Avenue, Suite 402  
 Chicago, Illinois 60656  
 Tel. 773.775.4009 Fax 773.775.4014

USER NAME = j.jelimon	DESIGNED -	REVISED -
PLOT SCALE = 1/20,0000' / 1"	DRAWN -	REVISED -
PLOT DATE = 4/9/2013	CHECKED -	REVISED -
DATE -	DATE -	REVISED -

**MILLENNIUM TRAIL  
 LAKE COUNTY FOREST PRESERVES**

**STAGES OF CONSTRUCTION - STAGE 2  
 ROLLINS ROAD UNDERPASS**

SCALE:	SHEET NO.	OF SHEETS	STA.	TO STA.
--------	-----------	-----------	------	---------

F.A.U. RTE.	SECTION	COUNTY	TOTAL SHEETS	SHEET NO.
181	12-F3000-01-BT	LAKE	118	29
CONTRACT NO. 63807				
FED. ROAD DIST. NO. - ILLINOIS FED. AID PROJECT				