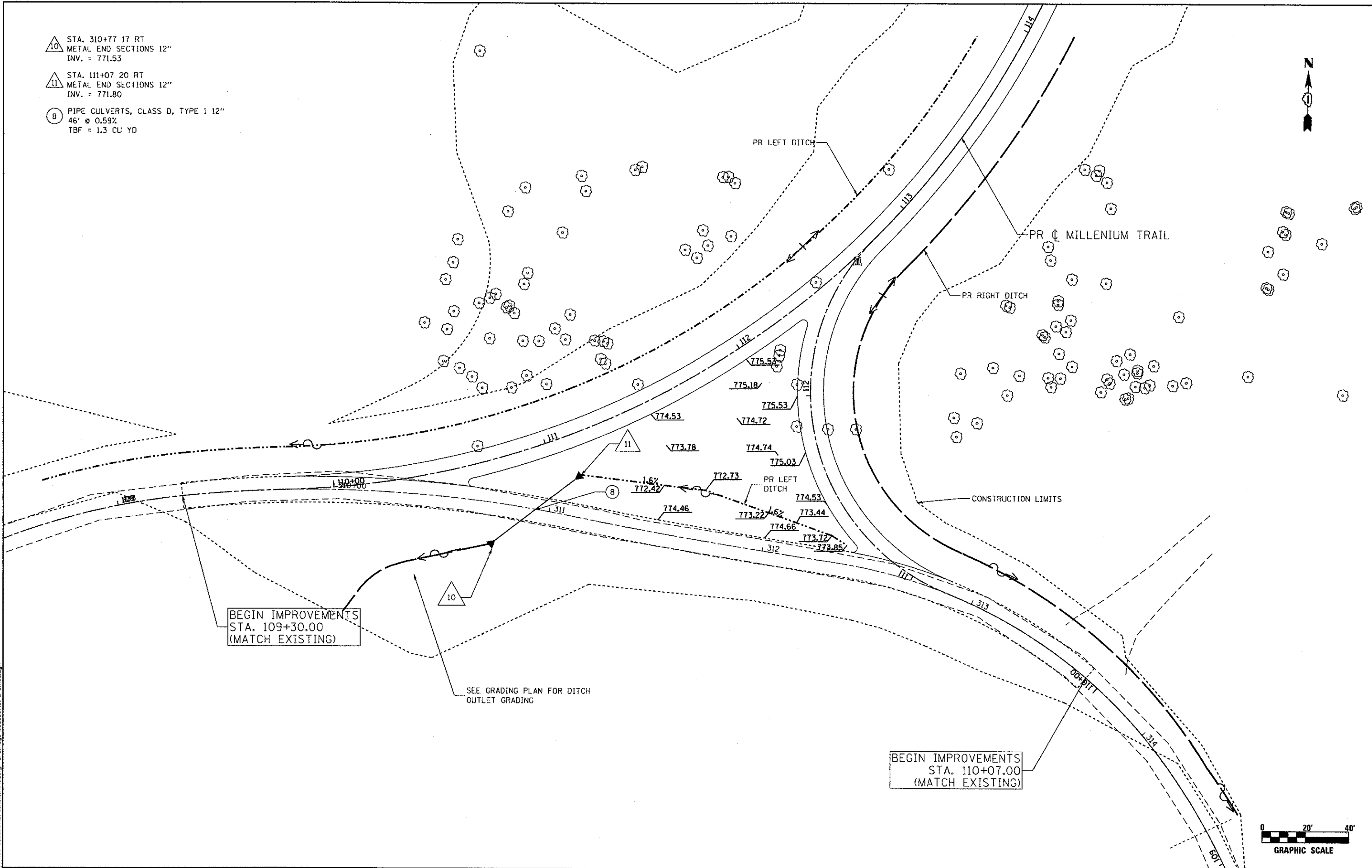


- △ 10 STA. 310+77 17 RT
METAL END SECTIONS 12"
INV. = 771.53
- △ 11 STA. 111+07 20 RT
METAL END SECTIONS 12"
INV. = 771.80
- ⊗ 8 PIPE CULVERTS, CLASS D, TYPE 1 12"
46' @ 0.59%
TBF = 1.3 CU YD



FILE NAME = N:\PROJ\0228897\01\Rollins\Design\Drawings\0228897_01-drain02.dgn

Ciorba Group, Inc.
CONSULTING ENGINEERS
5507 North Cumberland Avenue, Suite 402
Chicago, Illinois 60656
Tel. 773.775.4009 Fax 773.775.4014

USER NAME = jk.jellman	DESIGNED - DMM	REVISED -
PLOT SCALE = 480.0000' / Ft.	DRAWN - DMM	REVISED -
PLOT DATE = 4/8/2013	CHECKED - TW	REVISED -
	DATE -	REVISED -

**MILLENNIUM TRAIL
LAKE COUNTY FOREST PRESERVES**

DRAINAGE PLAN - MILLENNIUM TRAIL ROLLINS ROAD UNDERPASS	
SCALE:	SHEET NO. OF SHEETS STA. TO STA.

F.A.U. RTE.	SECTION	COUNTY	TOTAL SHEETS	SHEET NO.
181	12-F3000-01-BT	LAKE	118	39
FED. ROAD DIST. NO. - [ILLINOIS] FED. AID PROJECT				CONTRACT NO. 63807