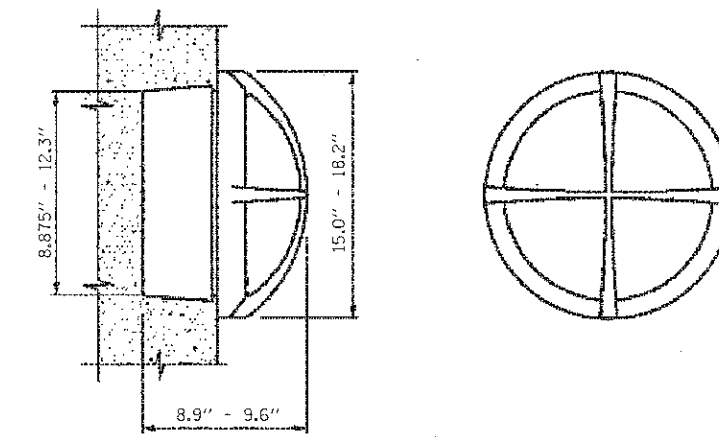
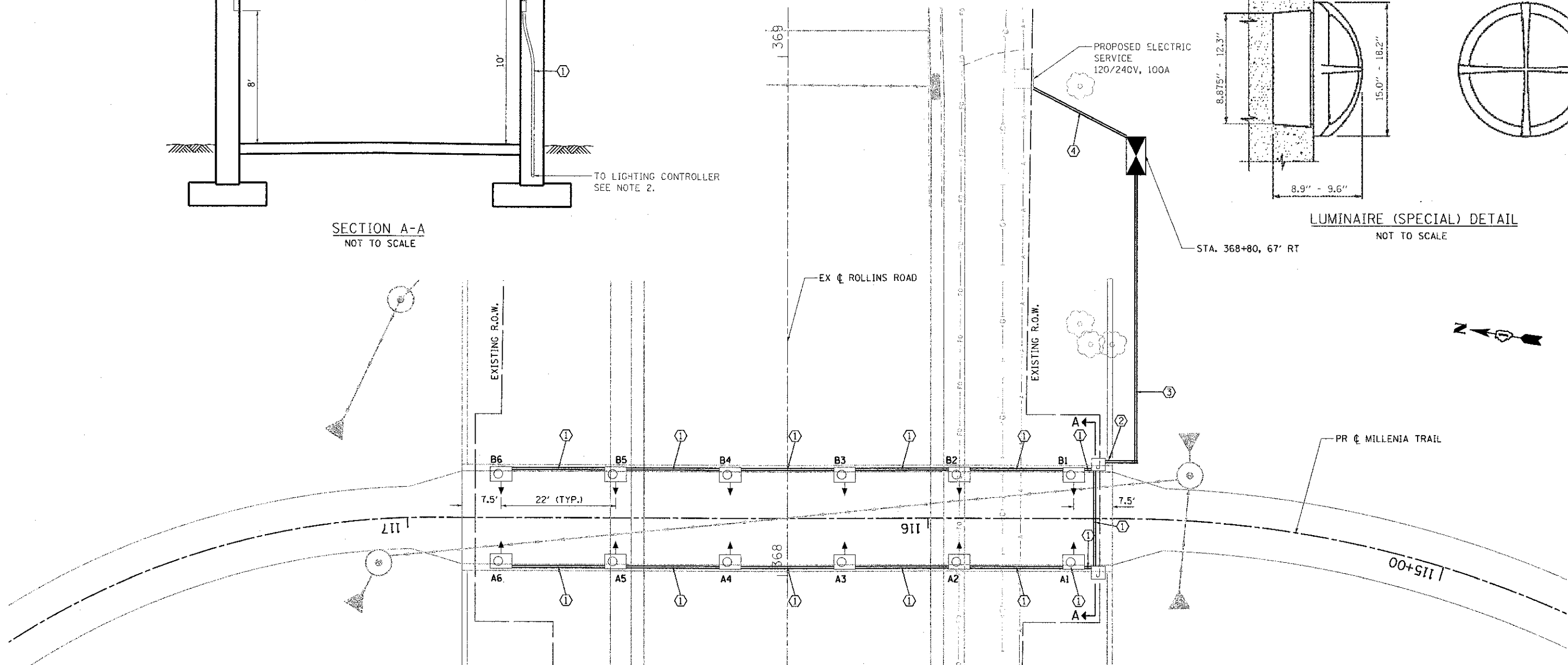


SECTION A-A
NOT TO SCALE



LUMINAIRE (SPECIAL) DETAIL
NOT TO SCALE



UNDERPASS LUMINAIRE LOCATIONS

LUMINAIRE NO.	STATION	OFFSET
A1	115+72	9' LT
A2	115+94	9' LT
A3	116+16	9' LT
A4	116+38	9' LT
A5	116+60	9' LT
A6	116+82	9' LT
B1	115+72	9' RT
B2	115+94	9' RT
B3	116+16	9' RT
B4	116+38	9' RT
B5	116+60	9' RT
B6	116+82	9' RT

WIRE AND CONDUIT TABLE

TAG	WIRE	CONDUIT
①	2-1/C NO. 10 AND 1/C NO. 10 GROUND	CONDUIT EMBEDDED IN STRUCTURE, 1" DIA., GALVANIZED STEEL
②	3-1/C NO. 10 AND 1/C NO. 10 GROUND	CONDUIT EMBEDDED IN STRUCTURE, 1" DIA., GALVANIZED STEEL
③	3-1/C NO. 10 AND 1/C NO. 10 GROUND	UNDERGROUND CONDUIT, GALVANIZED STEEL, 1" DIA.
④	3-1/C NO. 2	UNDERGROUND CONDUIT, PVC COATED GALVANIZED STEEL, 2 1/2" DIA.

LEGEND

- LUMINAIRE (SPECIAL) - UNDERPASS LUMINAIRE, WALL MOUNTED, 70 WATT METAL HALIDE
- LIGHTING CONTROLLER, SPECIAL
- EXISTING UTILITY POLE
- RIGID STEEL CONDUIT, TYPE AND SIZE AS NOTED
- JUNCTION BOX, STAINLESS STEEL, EMBEDDED IN STRUCTURE 8" X 8" X 6"

NOTES

- 1.) ALL LUMINAIRES ARE MOUNTED 8' FROM THE BOTTOM OF THE LUMINAIRE TO THE FINISHED SURFACE OF THE BIKE PATH.
- 2.) CONDUIT SHALL EXIT THE END OF THE UNDERPASS WALL 6" ABOVE THE SPREAD FOOTING. THE CONDUIT SHALL BE ROUTED TO ACHIEVE A 30" DEPTH BEYOND THE UNDERPASS FOUNDATION.

FILE NAME: s:\p\proj\02220017\011_Rollins\Design\Lighting\02220017_01-Rollins-Lighting-01.dwg

Ciorba Group, Inc.
CONSULTING ENGINEERS
6607 North Cumberland Avenue, Suite 402
Chicago, Illinois 60656
Tel: 773.775.4089 Fax: 773.775.4014

USER NAME = jkajlman	DESIGNED - JMV	REVISED -
PLDT SCALE = 28.0000' / 1"	DRAWN - JMV	REVISED -
PLDT DATE = 4/8/2013	CHECKED - MJL	REVISED -
	DATE - 4/8/2013	REVISED -

**MILLENNIUM TRAIL
LAKE COUNTY FOREST PRESERVES**

**LIGHTING PLAN
ROLLINS ROAD UNDERPASS**

SCALE: 1" = 10' SHEET NO. OF SHEETS STA. TO STA.

F.A.U. RTE.	SECTION	COUNTY	TOTAL SHEETS	SHEET NO.
181	12-F3000-01-BT	LAKE	118	46
FED. ROAD DIST. No. ILLINOIS FED. AID PROJECT				CONTRACT NO. 63807