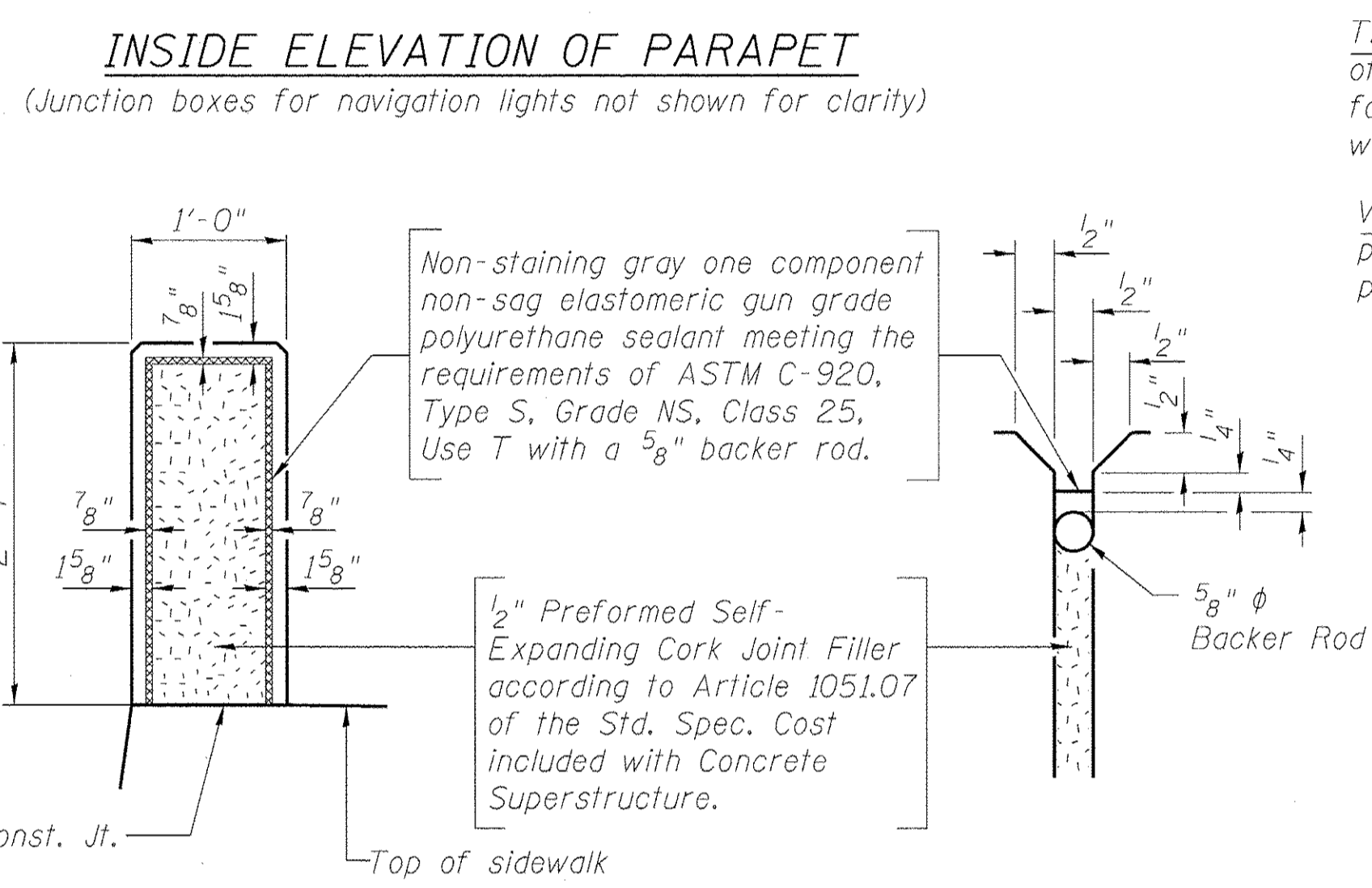
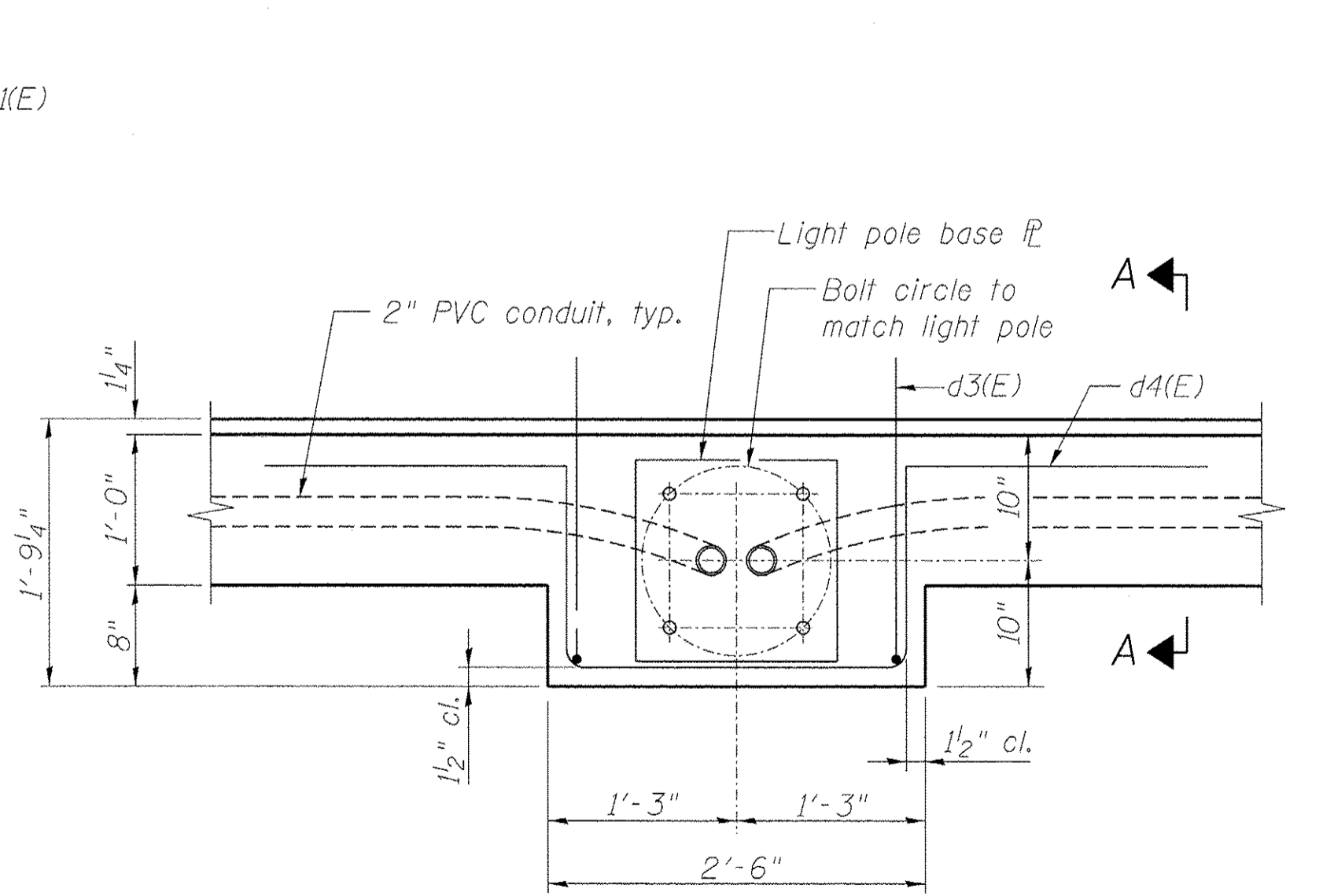


SECTION THRU SIDEWALK AND PARAPET
(South side looking West, North side similar)

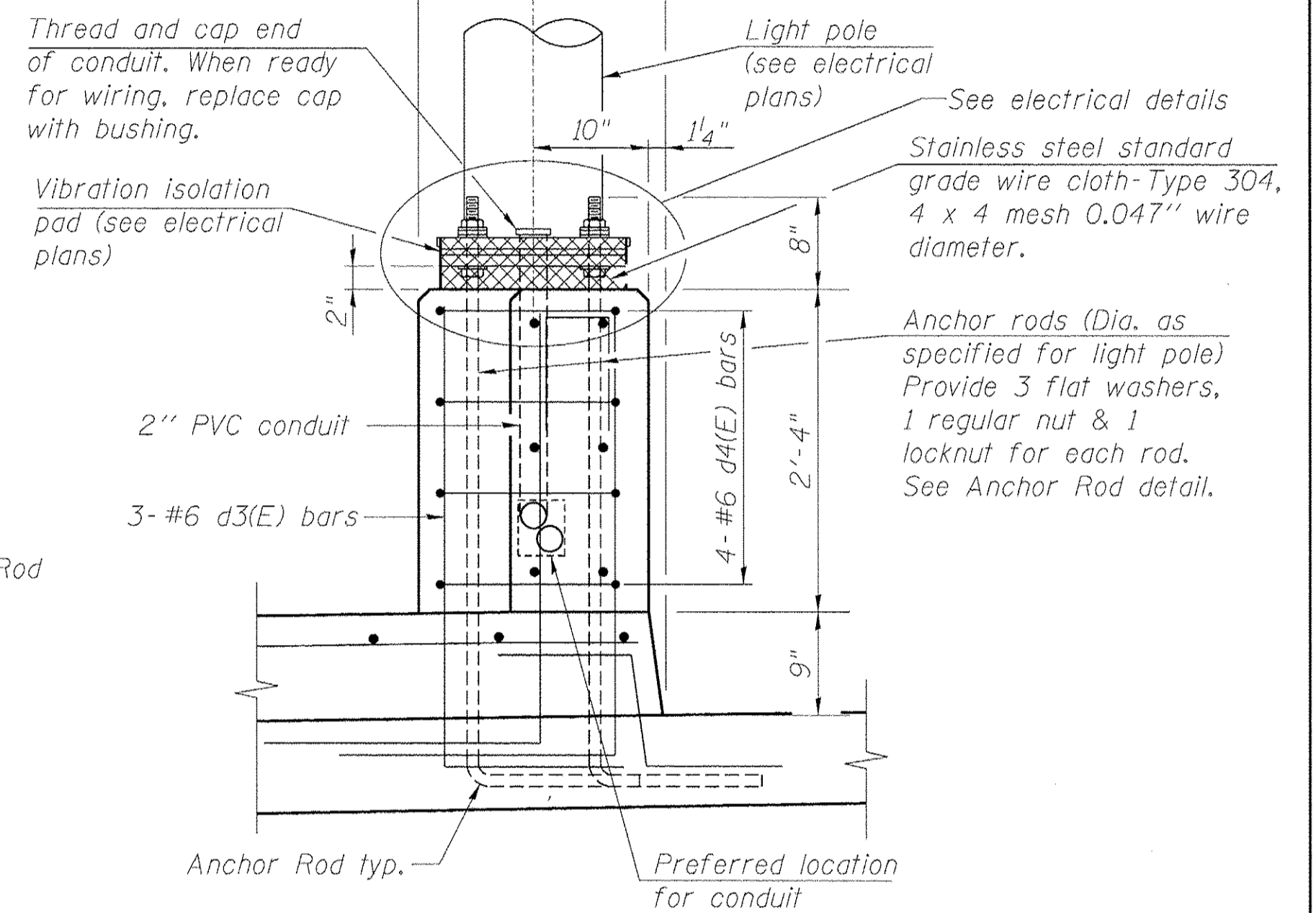


PARAPET JOINT DETAILS

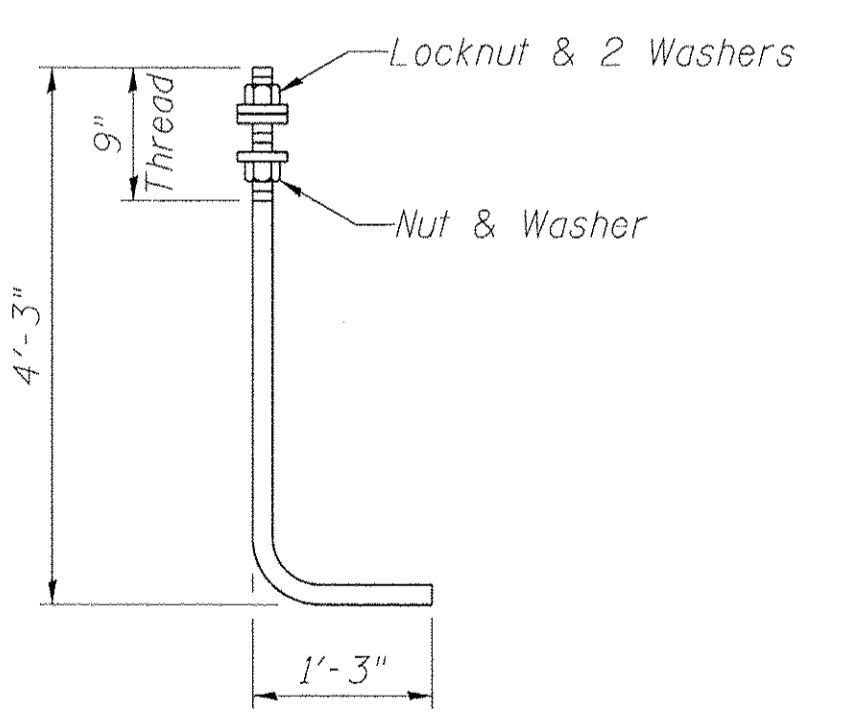


PLAN

Note:
Cost of anchor rods and conduit is included with Concrete Superstructure.



SECTION A-A



ANCHOR ROD

Diameter as specified for light poles.
(ASTM F 1554 Grade 105)
Full length hot dipped galvanized.

NOTES:

- See sheet S17 for Bill of Material.
- See sheets S21 and S22 for Bicycle Railing and Parapet Railing details.
- e1(E) and e2(E) bars shall be cut in field to miss the junction boxes at the navigation light locations.

benesch
engineers · scientists · planners

Alfred Benesch & Company
205 North Michigan Avenue, Suite 2400
Chicago, Illinois 60601
312-669-0450 Job No. 10055.02

FILE NAME =	USER NAME =	DESIGNED -	REVISED -
0166953.014_Parapet.dgn	eship	MJF/MFB	-
	PLOT SCALE =	CHECKED -	REVISED -
		EFS	-
	PLOT DATE =	DRAWN -	REVISED -
	2/19/2013	RMG	-
		CHECKED -	REVISED -
		EFS	-

STATE OF ILLINOIS
DEPARTMENT OF TRANSPORTATION

SUPERSTRUCTURE DETAILS 1 OF 4
STRUCTURE NO. 016-6953 BRIDGE ST. OVER THE NORTH SHORE CHANNEL

SHEET NO. S14 OF S50 SHEETS

F.A.I. RTE.	SECTION	COUNTY	TOTAL SHEETS	SHEET NO.
	08-00251-00-BR	COOK	118	67
CONTRACT NO. 63817			ILLINOIS FED. AID PROJECT	

X:\100005\10055.02\Eng_Docs\Phase_II\Bridge_Street_016-6953\Final\0166953-014_Parapet.dgn 2:50:40 PM 2/19/2013