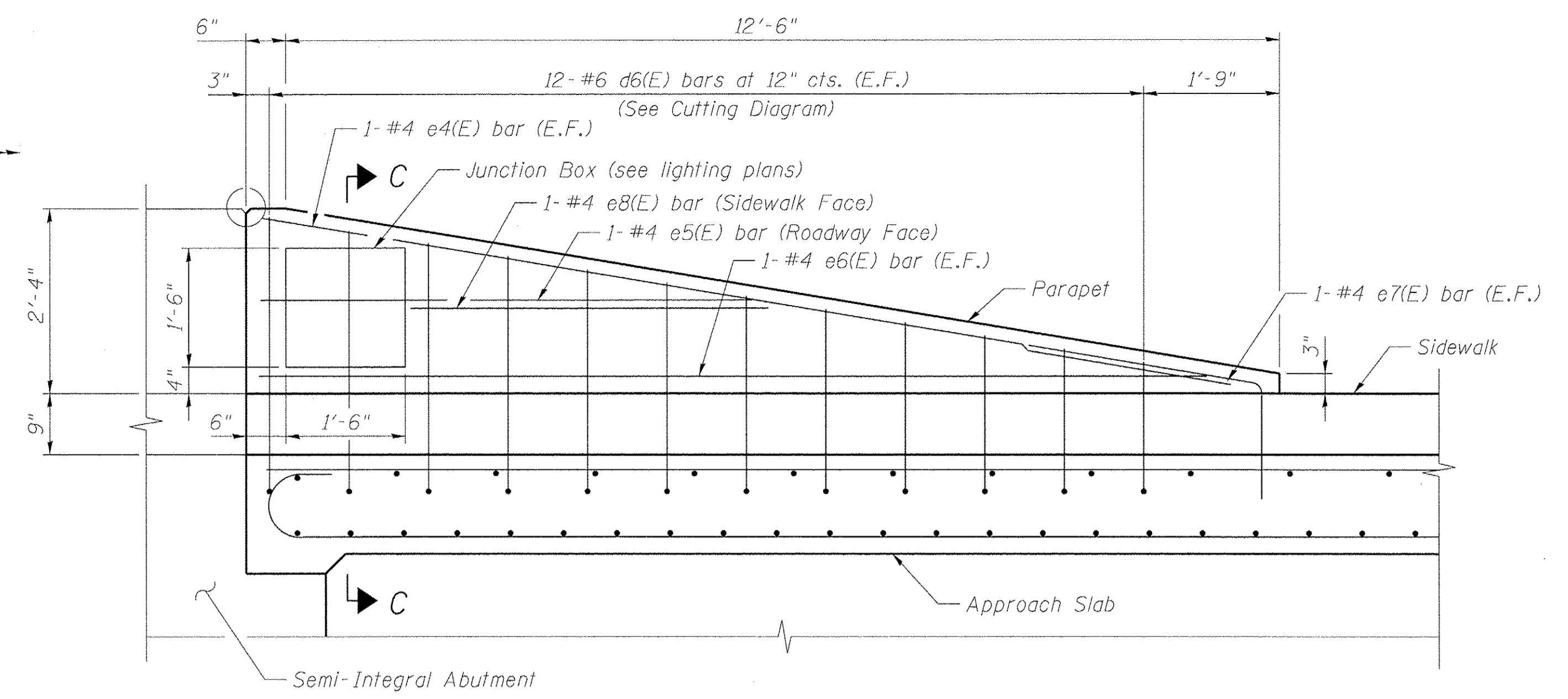


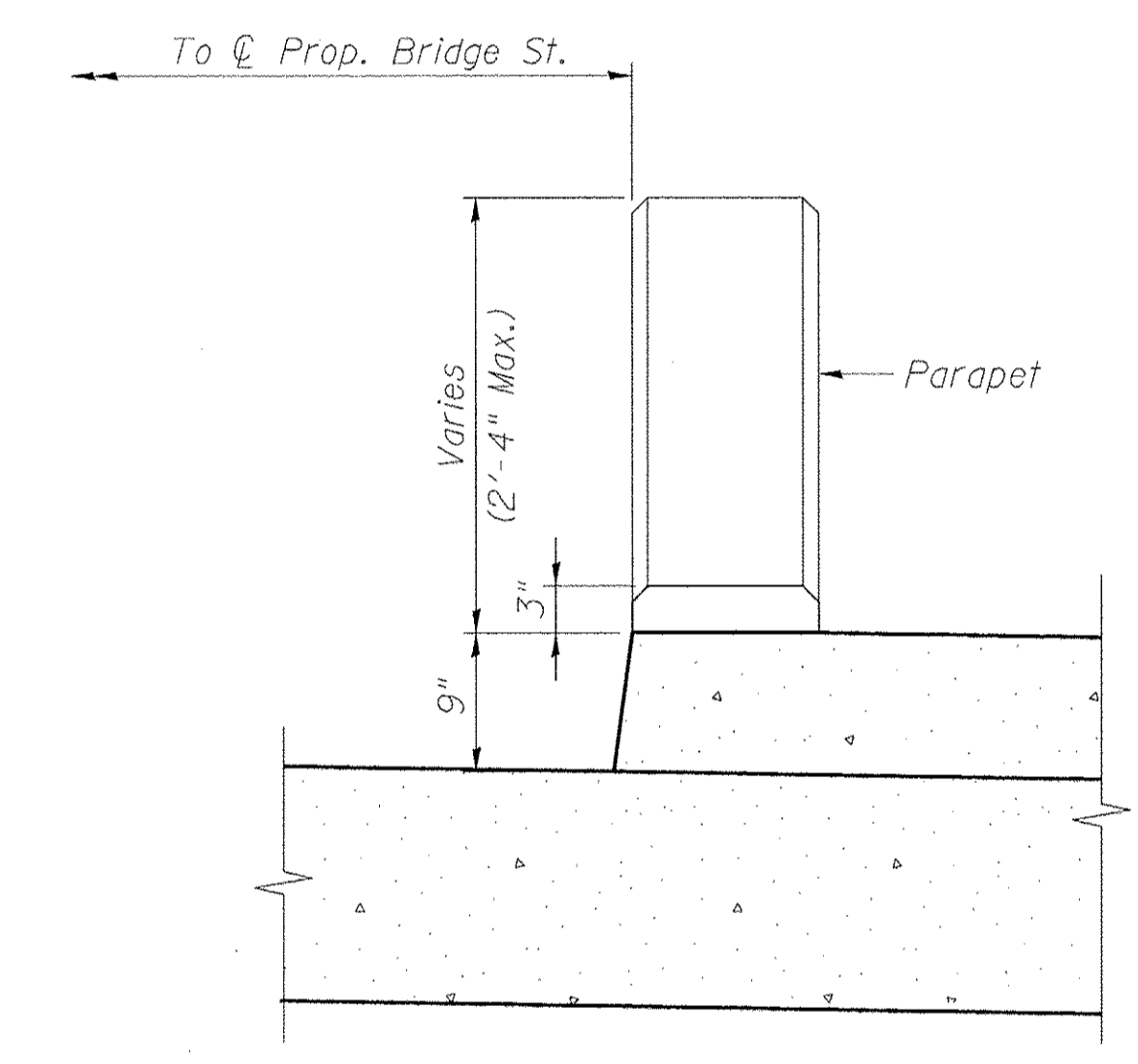
PLAN

*Tilt #9 b5(E) bars as required to maintain clearance.

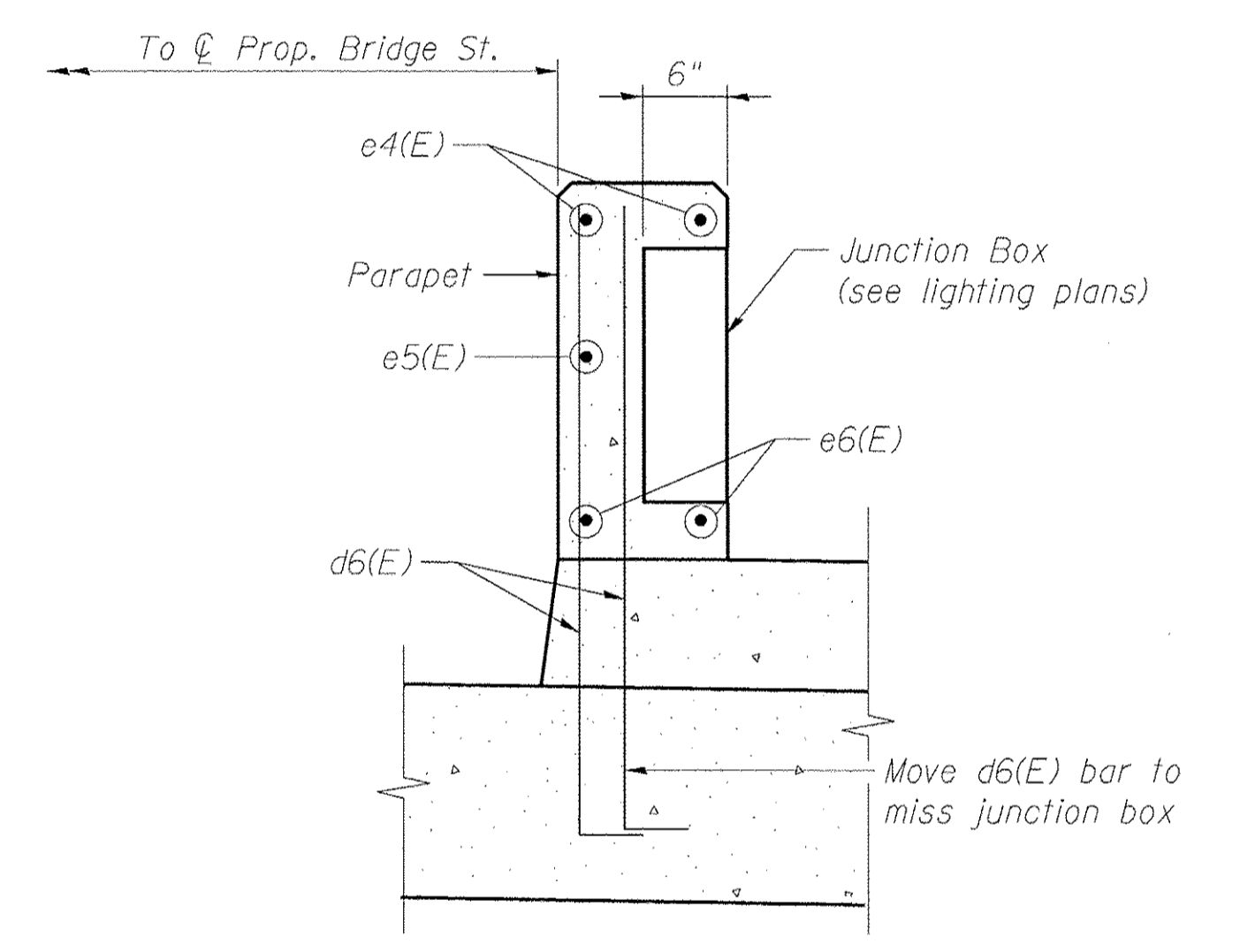


SECTION A-A

West Parapet shown, East parapet, similar



VIEW B-B



SECTION C-C

(At Junction Box)

MINIMUM BAR LAP
#4 bar = 2'-7"

- NOTES:
1. See sheet S20 for Sections D-D & E-E.
 2. All transverse reinforcing steel bar spacings, except for footing reinforcing, is measured along ϕ Roadway.

benesch
engineers · scientists · planners
Alfred Benesch & Company
205 North Michigan Avenue, Suite 2400
Chicago, Illinois 60601
312-565-0450 Job No. 10055.02

FILE NAME =	USER NAME = eship	DESIGNED - MFB	REVISED -
0166953_018_Appr1.dgn	PLOT SCALE =	CHECKED - JHG	REVISED -
	PLOT DATE = 2/19/2013	DRAWN - RMG	REVISED -
		CHECKED - JHG	REVISED -

STATE OF ILLINOIS
DEPARTMENT OF TRANSPORTATION

BRIDGE APPROACH SLAB DETAILS 1 OF 3
STRUCTURE NO. 016-6953 BRIDGE ST. OVER THE NORTH SHORE CHANNEL
SHEET NO. S18 OF S50 SHEETS

F.A.I. RTE.	SECTION	COUNTY	TOTAL SHEETS	SHEET NO.
	08-00251-00-BR	COOK	118	71
ILLINOIS FED. AID PROJECT			CONTRACT NO. 63817	

X:\100000S\100055.02\Eng_Docs_Phase_11\Bridge_Strees_016-6953\Final\0166953_018_Appr1.dgn 2/19/2013 2:50:50 PM