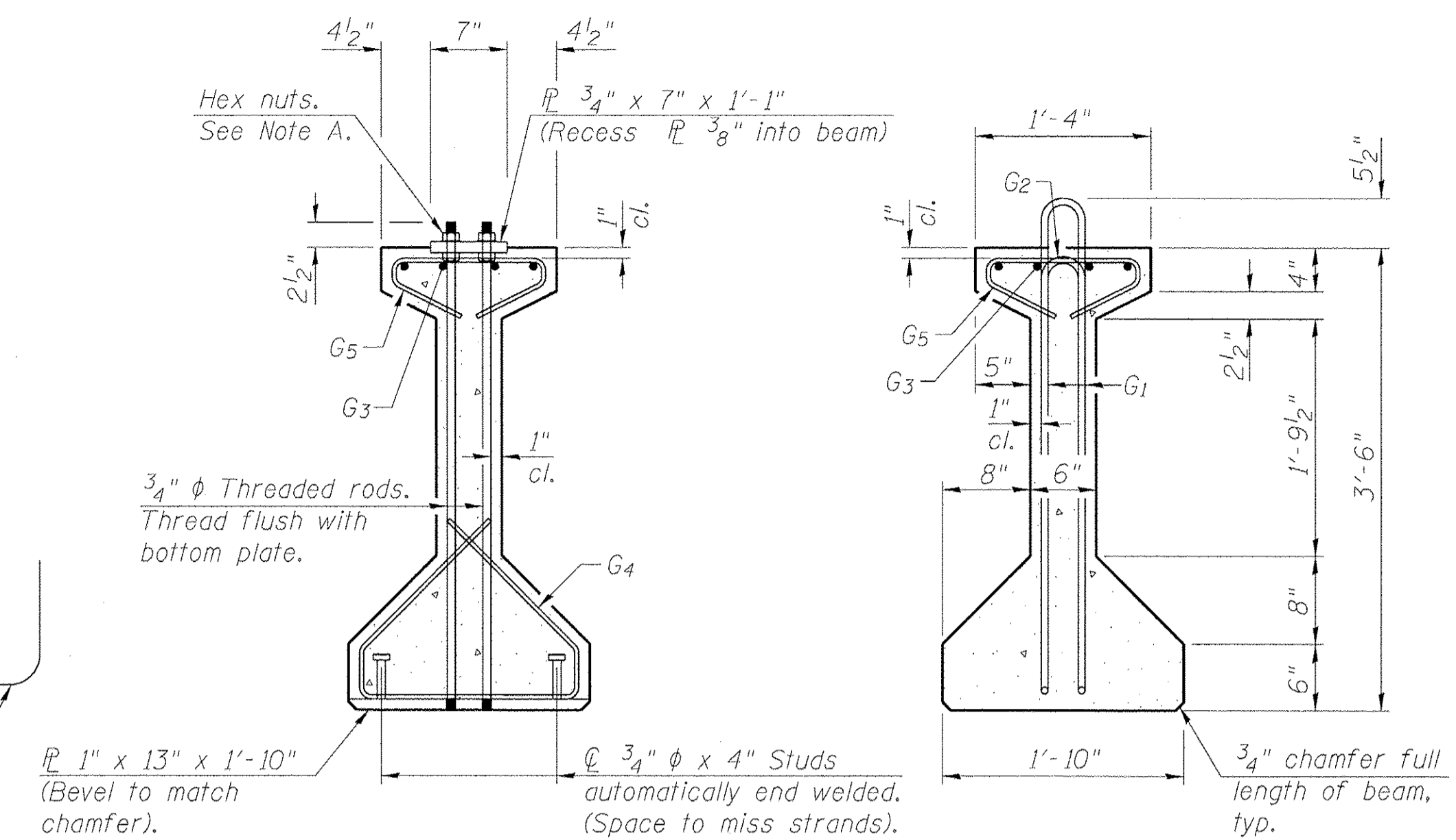


**ELEVATION OF BEAM**  
(Showing reinforcement & dimensions)

\*3 spaces at 3" = 9"

\*\*4- 3/4" threaded dowel rods at 3" cts., Each Face



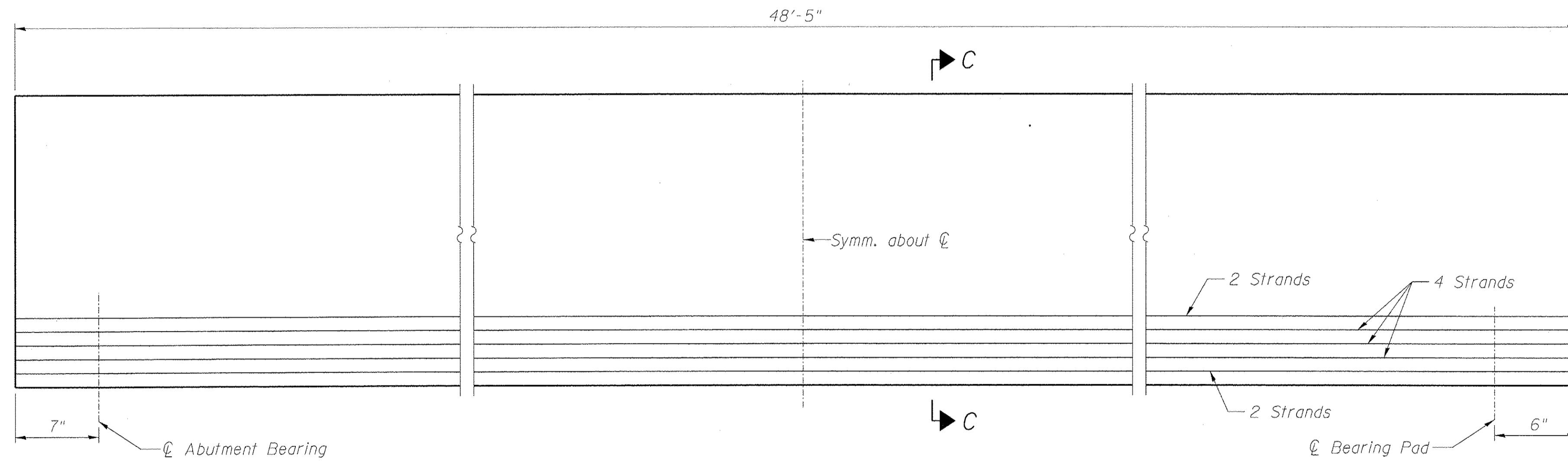
**SECTION A-A**

**SECTION B-B**

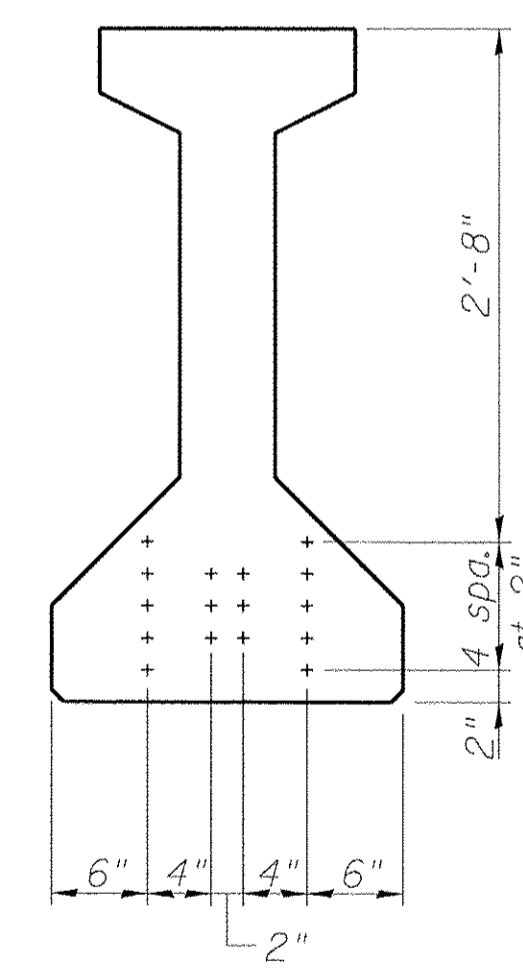
Note A:  
Hex nuts (top and bottom) with lock washers (top). Only tighten sufficiently to compress lock washers.

2- #8 G6 bar assembly with threaded coupler splice at pier only. (See sheet S26 for details).

1" x 13" x 1'-10" (Bevel to match chamfer).  
3/4" dia x 4" Studs automatically end welded. (Space to miss strands).



**ELEVATION OF BEAM**  
(Showing prestressing steel)  
(Span 1 shown, Span 3 opposite hand)



**SECTION C-C**

**\*\*\*BAR LIST  
ONE BEAM ONLY**

Bar	No.	Size	Length	Shape
G1	80	#4	8'-7"	∩
G2	10	#4	6'-8"	∩
G3	8	#6	25'-6"	—
G4	38	#3	4'-11"	∩
G5	49	#3	2'-6"	∩
G6	2	#8	6'-6"	∩

\*\*\*For information only

**NOTES:**

- See sheet S26 for additional details and Bill of Material.
- Required release strength,  $f'_{ci}$ , shall be 5,000 psi.
- Required final strength,  $f'_{c}$ , shall be 6,000 psi.

**benesch**  
engineers · scientists · planners  
Alfred Benesch & Company  
205 North Michigan Avenue, Suite 2400  
Chicago, Illinois 60601  
312-565-0450 Job No. 10055.02

FILE NAME =  
0166953\_024\_PPCDet1.dgn

USER NAME = eship  
DESIGNED - MJF/MFB  
CHECKED - AAY  
DRAWN - RMG  
PLOT DATE = 2/19/2013  
REVISOR -  
REVISOR -  
REVISOR -  
REVISOR -

DESIGNED - MJF/MFB  
CHECKED - AAY  
DRAWN - RMG  
CHECKED - JHG

REVISOR -  
REVISOR -  
REVISOR -  
REVISOR -

**STATE OF ILLINOIS  
DEPARTMENT OF TRANSPORTATION**

**42" PPC I-BEAM - SPANS 1 AND 3  
STRUCTURE NO. 016-6953 BRIDGE ST. OVER THE NORTH SHORE CHANNEL**

SHEET NO. S24 OF S50 SHEETS

F.A.I. RTE.	SECTION	COUNTY	TOTAL SHEETS	SHEET NO.
	08-00251-00-BR	COOK	118	77
				CONTRACT NO. 63817
ILLINOIS FED. AID PROJECT				

X:\100005\10055.02\Eng\_Docs\_Phase\_II\Bridg\_Street\_016-6953\Final\0166953\_024\_PPCDet1.dgn 2/19/2013 2:51:00 PM