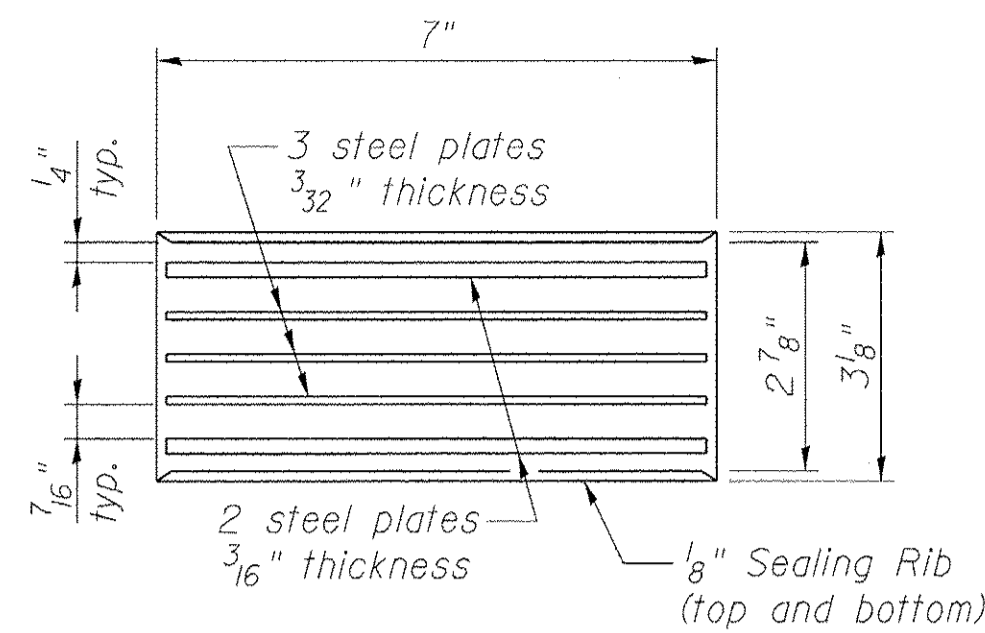


ELEVATION OF BEAM AT PIER

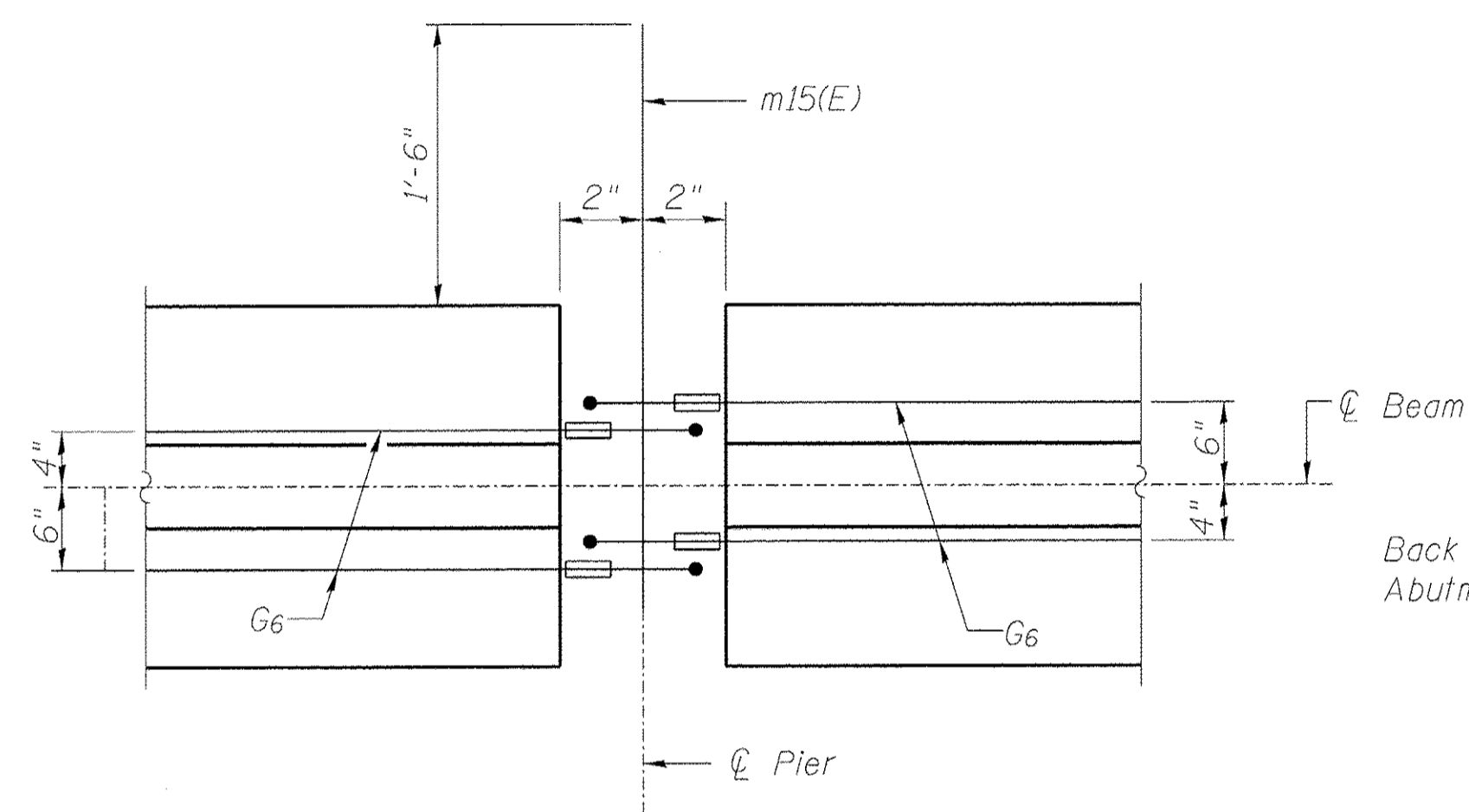


ABUTMENT BEARING DETAIL

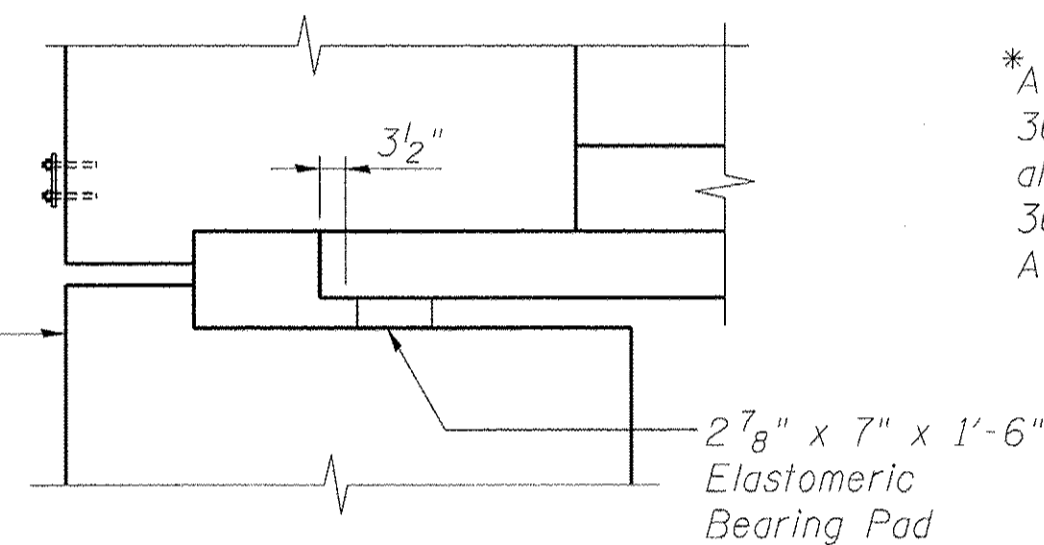
(Cost included with Furnishing and Erecting Precast Prestressed Concrete I-Beams, 42")

NOTES:

1. Inserts for 3/4" ϕ threaded dowel rods, when specified, are to be two strut, ferrule type for interior beams and single ferrule, flared loop type for exterior beams.
2. Prestressing steel shall be uncoated high strength, low relaxation 7-wire strand, Grade 270. The nominal diameter shall be 1/2" and the nominal cross-sectional area shall be 0.153 sq. in.
3. Reinforcement bars shall conform to ASTM A 706, Grade 60. (See Special Provisions).
4. A minimum 2 1/2" ϕ lifting pin shall be used to engage the lifting loops during handling.
5. Tilt G6 bars when necessary to maintain 1/2" clearance.
6. The top and bottom plates shall be AASHTO M270 Grade 50.
7. The bottom plates and studs shall be galvanized according to AASHTO M111. Top plates and threaded rods need not be galvanized.
8. Threaded rods shall be ASTM F 1554 Grade 55.
9. The G6 bar assembly shall be capable of developing 125 percent of the yield strength of the grade 60 reinforcement bar components. The assembly shall allow completion of the splice without turning of the hook bar. The hook bar shall be threaded such that the entire coupler can be threaded onto the hook bar.
10. Beams requiring G6 bar assemblies shall not be released from the fabricator until they have attained 45 days of age or older.
11. The Contractor shall be responsible for temporarily shoring the precast prestressed concrete I-beams during construction. Cost shall be included in Furnishing and Erecting Precast Prestressed Concrete I-Beams, 42".

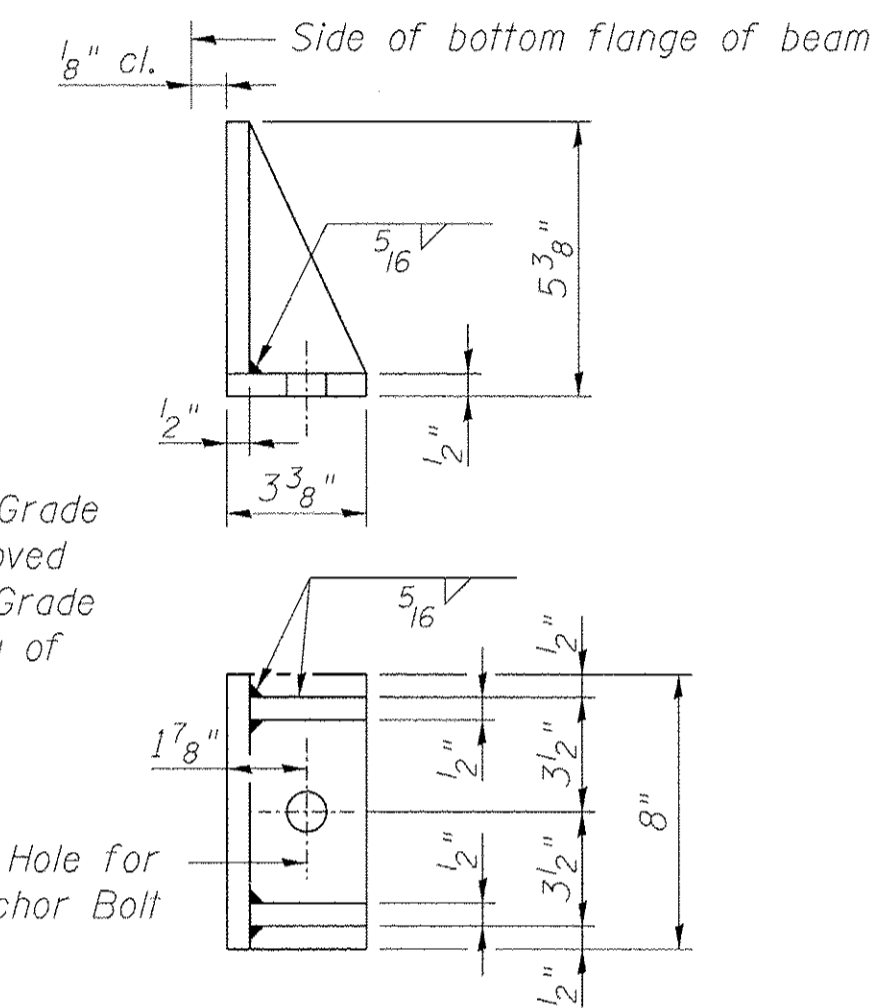


PLAN OF BEAM AT PIER



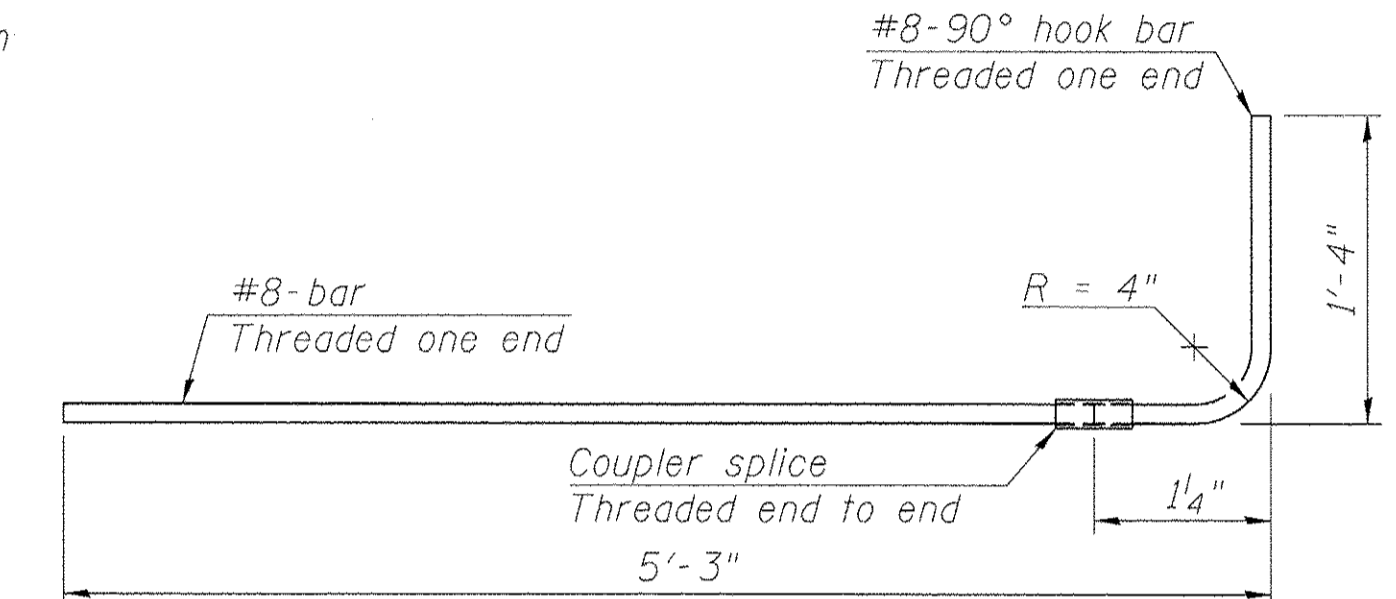
SECTION AT ABUTMENT

* Anchor bolts shall be ASTM F1554 Grade 36 all-thread (or an Engineer-approved alternate material). AASHTO M314 Grade 36 anchor bolts may be used in lieu of ASTM F1554.

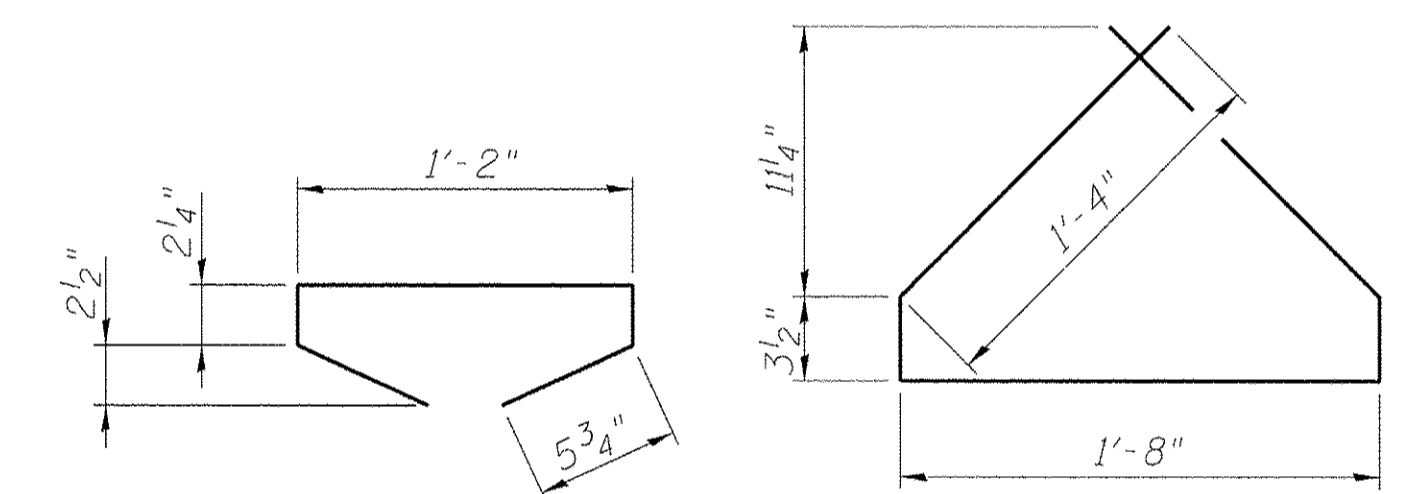


SIDE RETAINER DETAIL

2 required at each abutment bearing (existing and proposed)
(Cost of side retainer and anchor bolts shall be included in Concrete Structures)

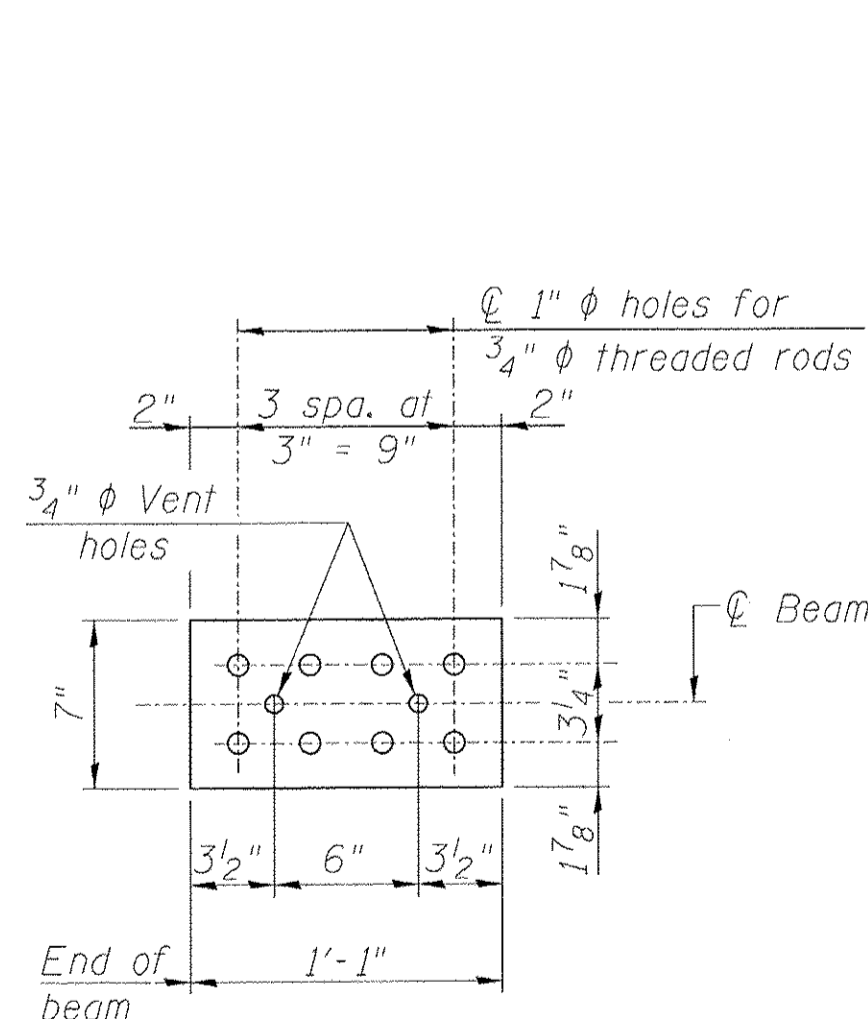


G6 BAR ASSEMBLY

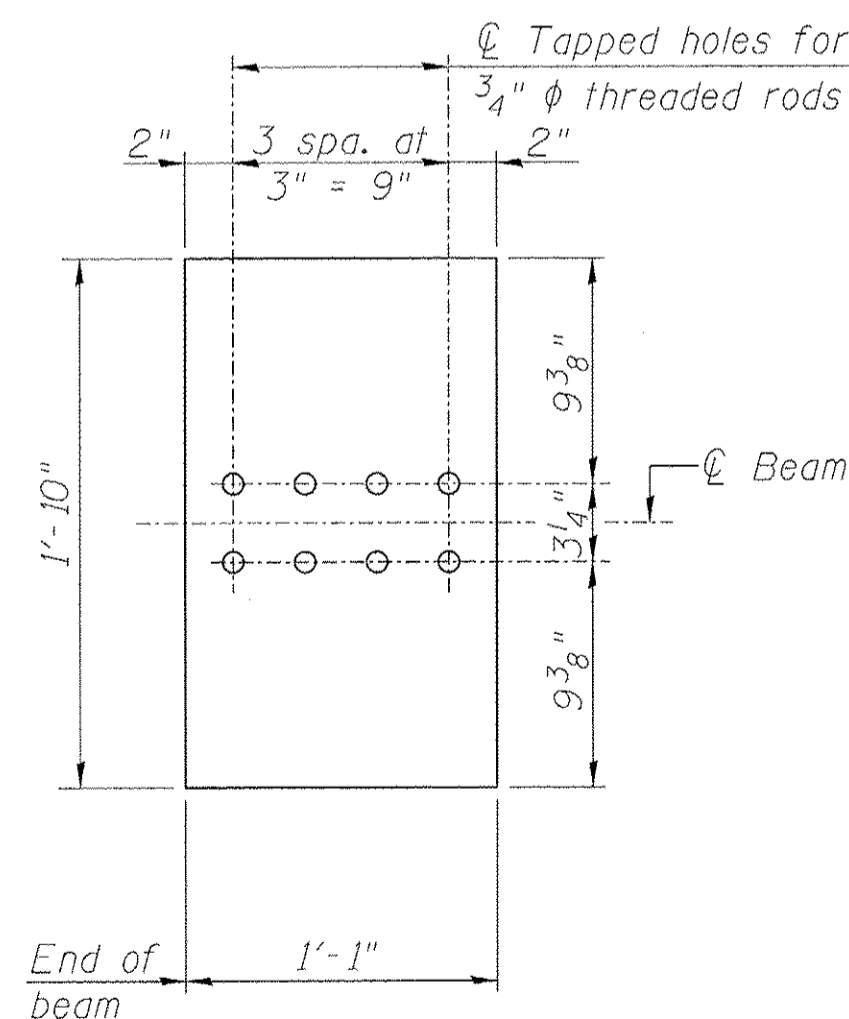


BAR G5

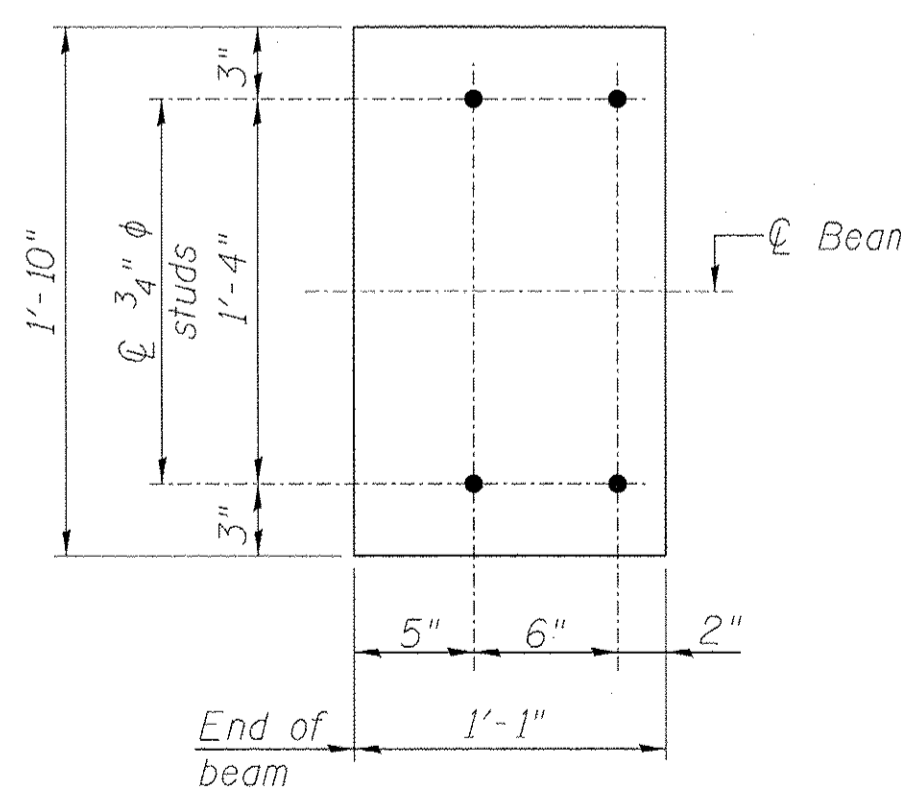
BAR G4



TOP PLATE

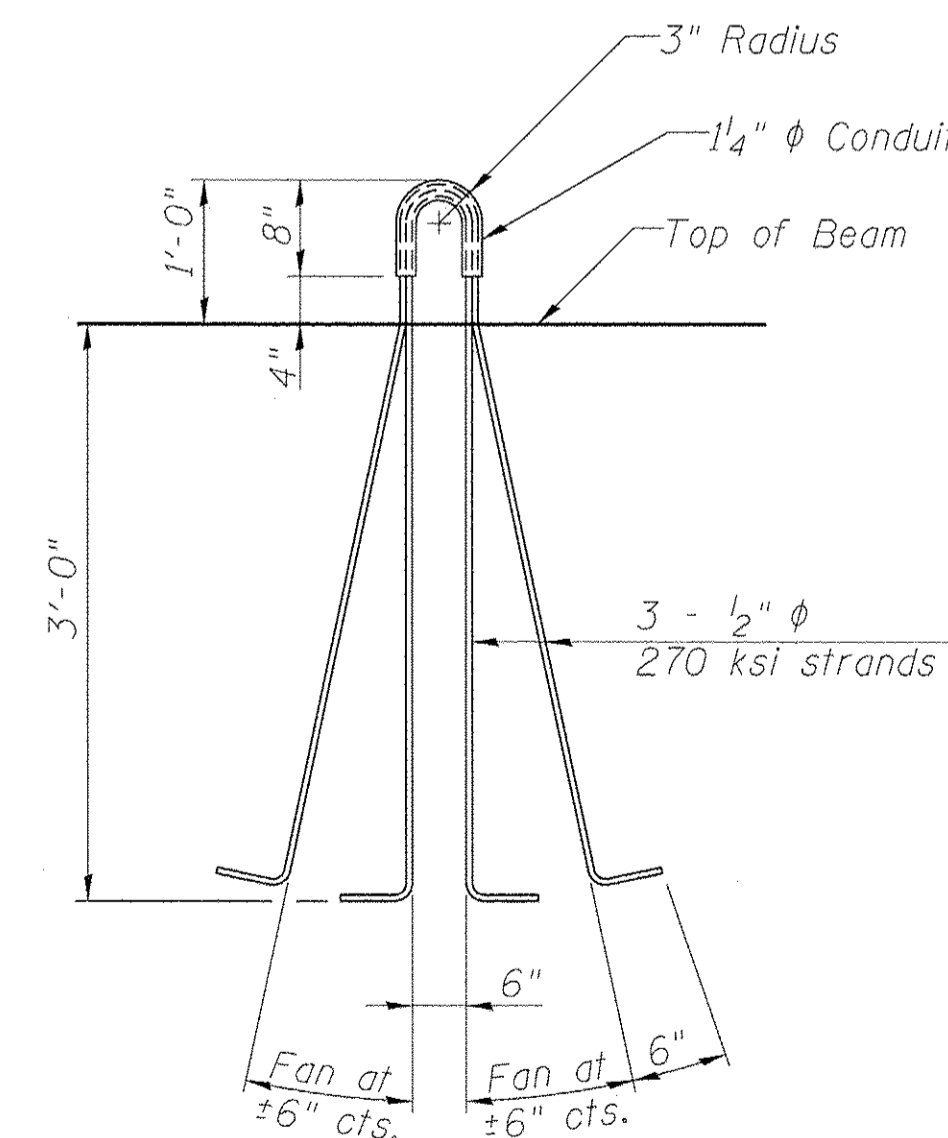


BOTTOM PLATE (Showing threaded rods)

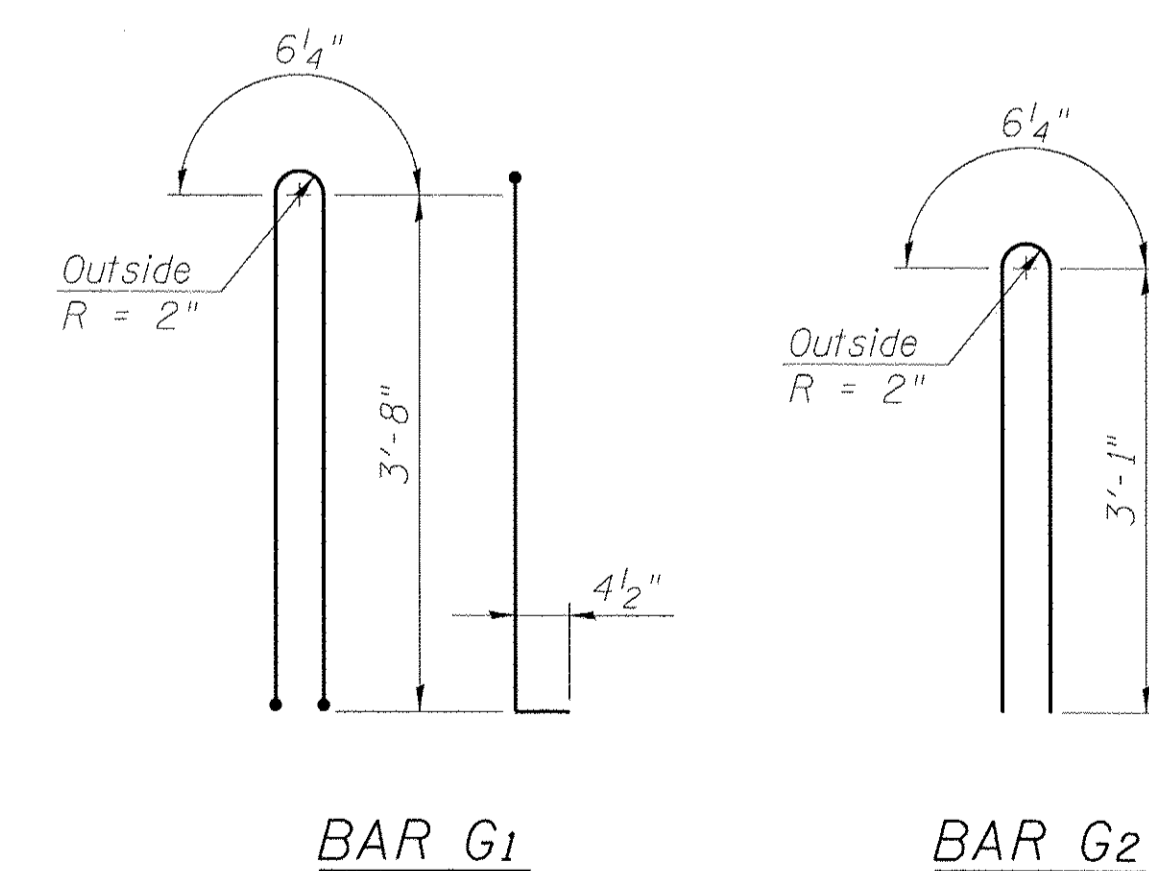


BOTTOM PLATE (Showing studs)

NOTE:
See bearing details for pintle hole locations when required.



LIFTING LOOP DETAIL



BAR G1

BAR G2

BILL OF MATERIAL

ITEM	UNIT	STAGE I	STAGE II	TOTAL
Furnishing and Erecting Precast Prestressed Concrete I-Beams, 42"	Foot	167.5	0.0	167.5

benesch
engineers - scientists - planners
Alfred Benesch & Company
205 North Michigan Avenue, Suite 2400
Chicago, Illinois 60601
312-585-0450 Job No. 10055.02

FILE NAME = 0166953_026.PPCDet3.dgn	USER NAME = eship	DESIGNED - MJF/MFB	REVISIONS -
		CHECKED - AAY	REVISIONS -
	PLOT SCALE =	DRAWN - RMG	REVISIONS -
	PLOT DATE = 2/19/2013	CHECKED - JHG	REVISIONS -

**STATE OF ILLINOIS
DEPARTMENT OF TRANSPORTATION**

**42" PPC I-BEAM DETAILS
STRUCTURE NO. 016-6953 BRIDGE ST. OVER THE NORTH SHORE CHANNEL**
SHEET NO. S26 OF S50 SHEETS

F.A.I. RTE.	SECTION	COUNTY	TOTAL SHEETS	SHEET NO.
	08-00251-00-BR	COOK	118	79
			CONTRACT NO. 63817	
[ILLINOIS] FED. AID PROJECT				