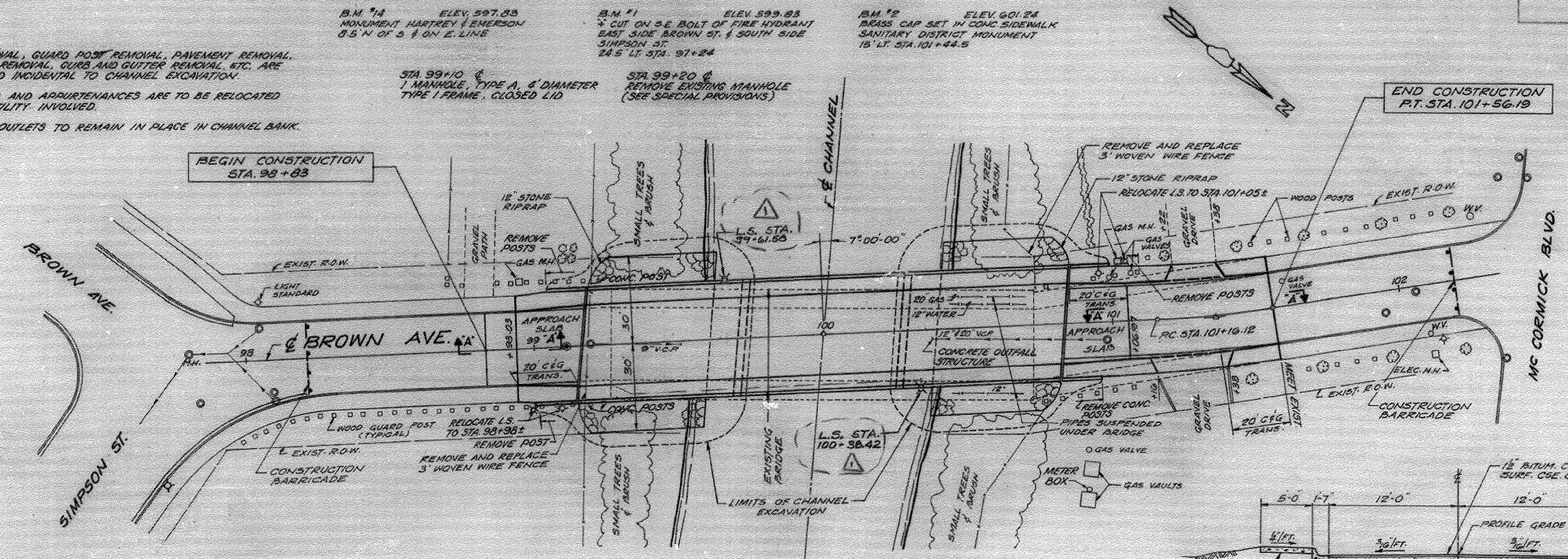


NOTES

1. TREE REMOVAL, GUARD POST REMOVAL, PAVEMENT REMOVAL, SIDEWALK REMOVAL, CURB AND GUTTER REMOVAL, ETC. ARE CONSIDERED INCIDENTAL TO CHANNEL EXCAVATION.
2. GAS MAINS AND APPURTENANCES ARE TO BE RELOCATED BY THE UTILITY INVOLVED.
3. V.C. PIPE OUTLETS TO REMAIN IN PLACE IN CHANNEL BANK.

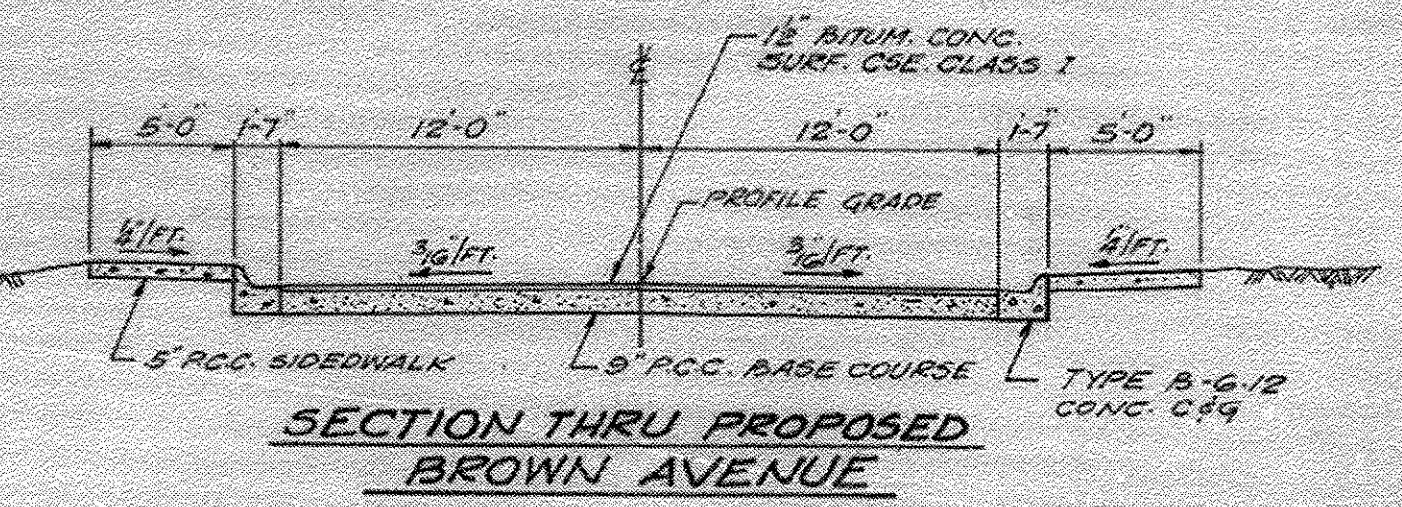
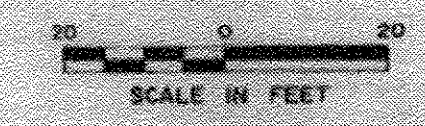


CURVE DATA

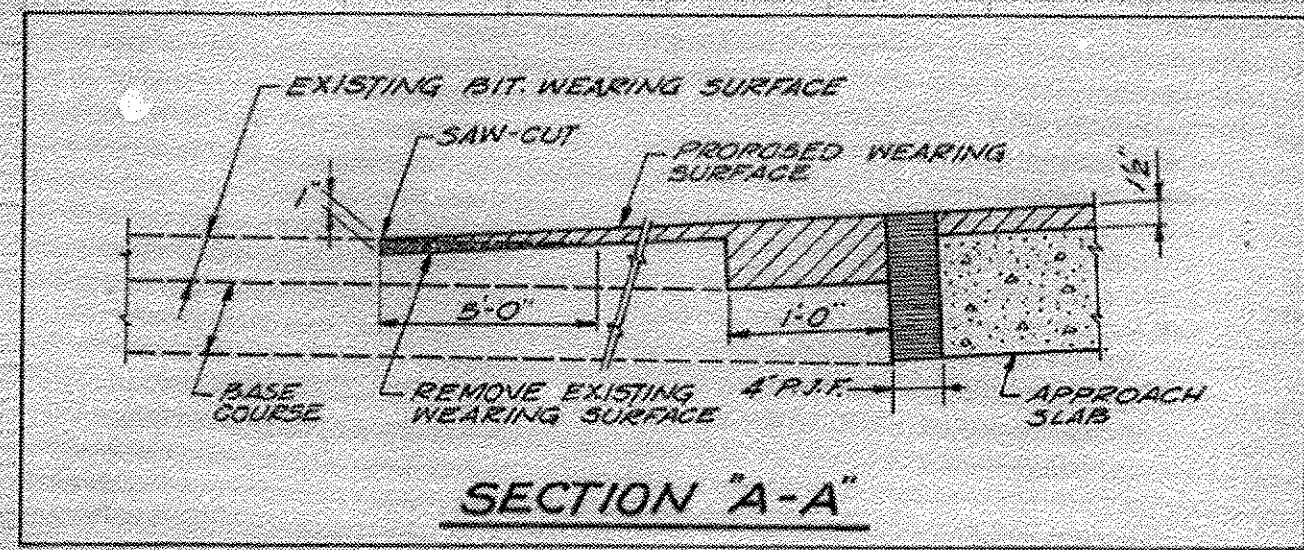
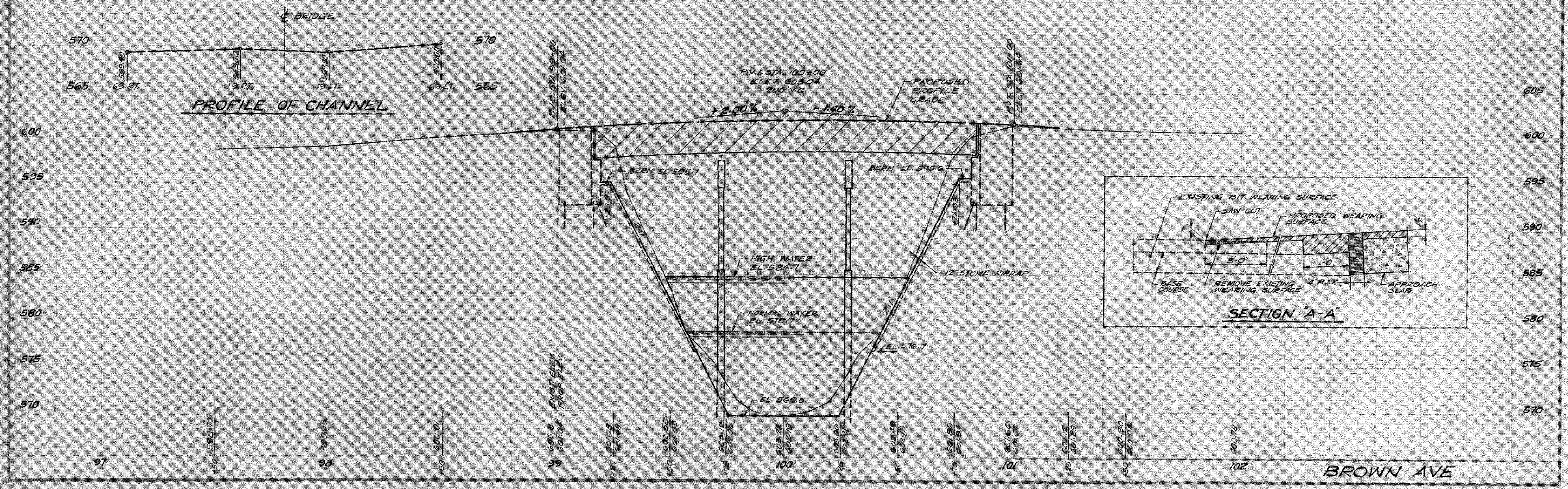
PI. STA. 101+36.17
$\Delta = 6^{\circ}00'36''$
$D = 15'15''00''$
$R = 375.71'$
$L = 40.01'$
$T = 20.05'$
$E = 0.53'$

BRIDGE APPROACH PAVEMENT
STANDARD 1909-10 METHOD I
STA. 98+93.03 TO STA. 99+14.5
5.9 S.Y. P.C.C. BASE COURSE (16 1/2" x 10 1/2" x 16 1/2")
3415 LBS. REINFORCEMENT BARS
5.1 TONS BITUM. CONC. SURF. CSE. CLASS I

BRIDGE APPROACH PAVEMENT
STANDARD 1909-10 METHOD I
STA. 100+85.50 TO STA. 101+06.27
5.9 S.Y. P.C.C. BASE COURSE (16 1/2" x 10 1/2" x 16 1/2")
3415 LBS. REINFORCEMENT BARS
5.1 TONS BITUM. CONC. SURF. CSE. CLASS I



A REVISION NOV. 25, 1978



benesch
engineers · scientists · planners

Alfred Benesch & Company
205 North Michigan Avenue, Suite 2400
Chicago, Illinois 60601
312-685-0450 Job No. 10055.02

FILE NAME =
0166953_040_Exist1.dgn

USER NAME = eship
DESIGNED - MJF
CHECKED - EFS
DRAWN - RMG
PLOT DATE = 2/19/2013

REVISOR -
REVISION -
REVISION -
REVISION -

STATE OF ILLINOIS
DEPARTMENT OF TRANSPORTATION

EXISTING DRAWING 1
STRUCTURE NO. 016-6953 BRIDGE ST. OVER THE NORTH SHORE CHANNEL
SHEET NO. 540 OF 550 SHEETS

F.A.I. RTE.	SECTION	COUNTY	TOTAL SHEETS	SHEET NO.
	08-00251-00-BR	COOK	118	93
CONTRACT NO. 63817			ILLINOIS FED. AID PROJECT	

2:52:17 PM X:\100005\10055.02\Eng_Docs_Phase_II\Bridge-Street_016-6953\Final\0166953_040_Exist1.dgn