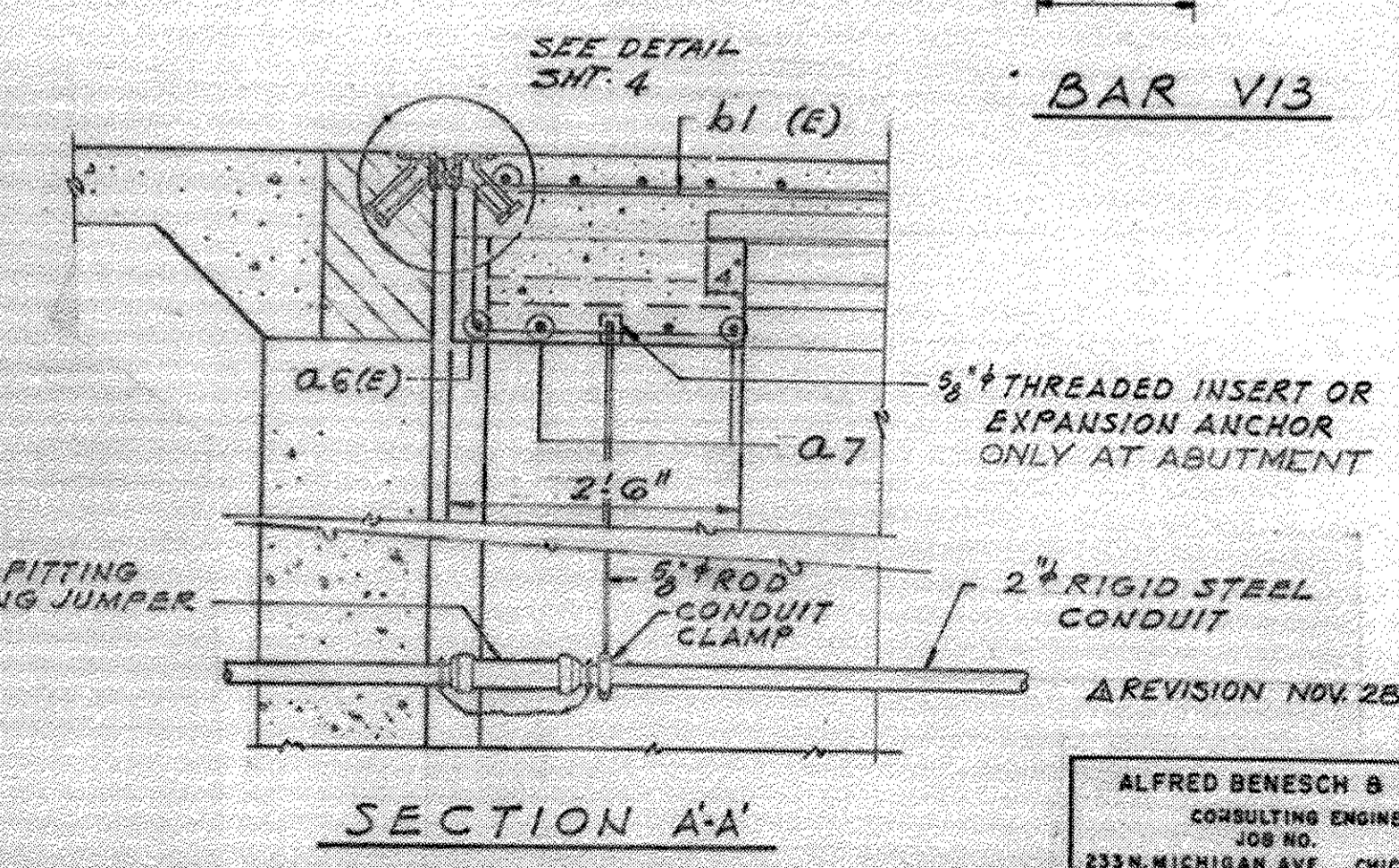
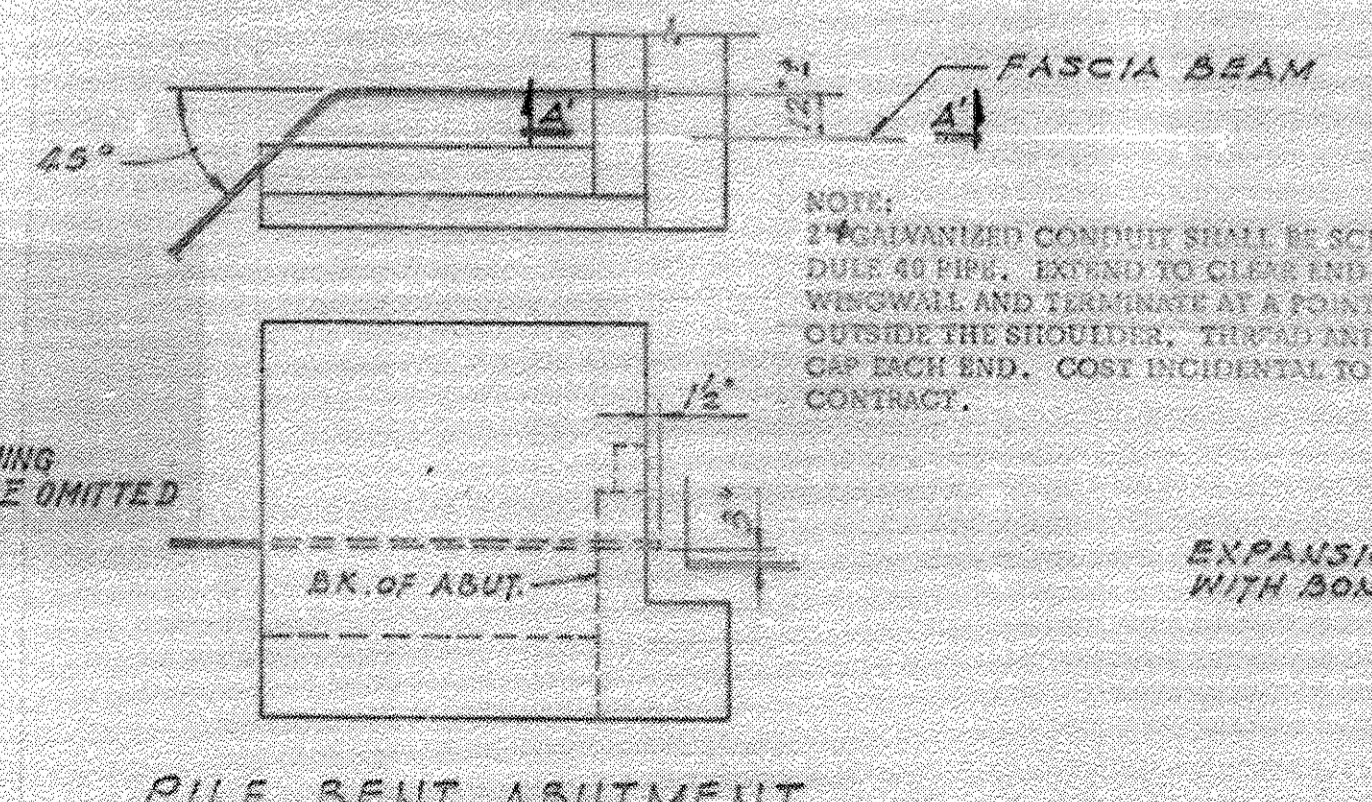
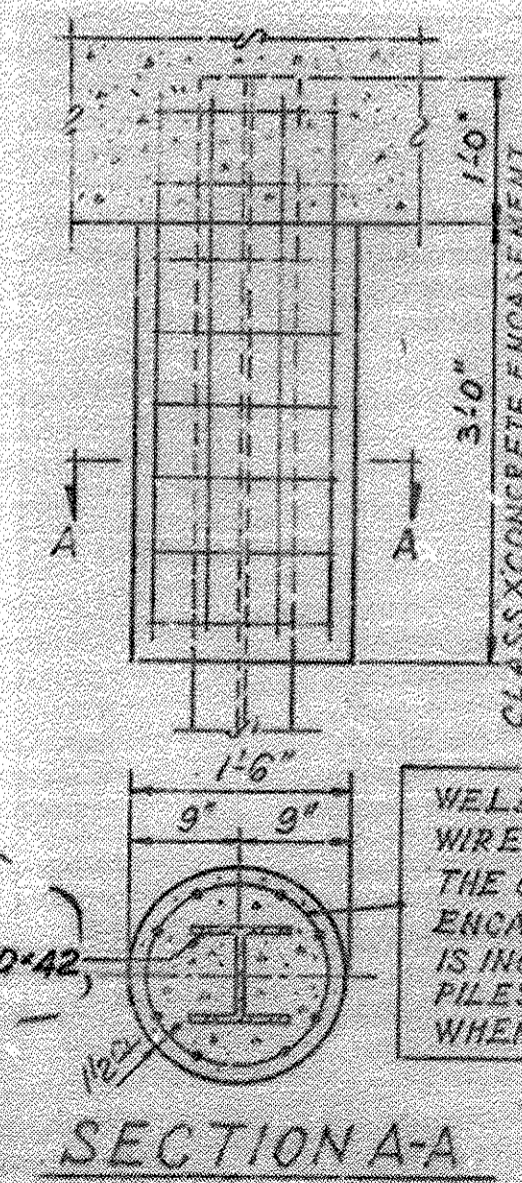


**BILL OF MATERIAL**

BAR	NUMBER REQ.	WEST ABUT.	EAST ABUT.	SIZE	LENGTH	SHAPE
h10	14	14		#5	8'-0"	┌
h11	14	14		#5	8'-0"	└
h12	10	10		#5	25'-3"	—
h13	2	2		#5	13'-6"	—
h14	42	42		#5	13'-2"	—
h15	4	4		#5	6'-3"	—
h18	8	8		#6	25'-6"	—
710	28	28		#6	9'-9"	U
P10	10	10		#7	26'-9"	—
P11	6	6		#7	15'-0"	—
P12	6	6		#7	11'-2"	—
S10	40	51		#4	15'-7"	□
S11	26	26		#4	9'-9"	□
U10	6	6		#7	5'-6"	┌
U11	8	8		#6	11'-0"	└
V10	49	49		#4	5'-0"	—
V11	49	49		#4	6'-6"	—
V12	49	49		#4	3'-9"	—
V13	28	28		#6	8'-0"	┌
V14	28	28		#6	8'-1"	└
TOTAL						
REINFORCING BARS	LB.	5,090	5,140			
CLASS X CONCRETE	CUYDS	44.3	44.3			
STEEL PILES (HP10#2)	LN. FT.	924	888			
STEEL TEST PILE	EACH	1	1			



**NOTES:**  
 ALL BAR DIMENSIONS ARE OUT TO OUT.  
 ALL EDGES SHALL HAVE STANDARD 3/4" CHAMFERS, EXCEPT AS NOTED OTHERWISE.  
 BARS INDICATED THUS: 38 x 4 #5-b ETC., INDICATE 38 LINES OF BARS WITH 4 BAR LENGTHS PER LINE.

**ABUTMENT DETAILS**  
 BROWN AVE.  
 OVER NORTH SHORE CHANNEL  
 OF METROPOLITAN SANITARY DISTRICT  
 OF GREATER CHICAGO  
 EVANSTON, ILLINOIS  
 STATION 100+00.00

ALFRED BENESCH & COMPANY  
 CONSULTING ENGINEERS  
 233N. MICHIGAN AVE. CHICAGO, ILLINOIS

**benesch**  
 engineers · scientists · planners  
 Alfred Benesch & Company  
 205 North Michigan Avenue, Suite 2400  
 Chicago, Illinois 60601  
 312-565-0450 Job No. 10055.02

FILE NAME =	USER NAME = esthp	DESIGNED = MJF	REVISED =
0166953_047_Exist8.dgn	PLOT SCALE =	CHECKED = EFS	REVISED =
	PLOT DATE = 2/19/2013	DRAWN = RMG	REVISED =
		CHECKED = EFS	REVISED =

STATE OF ILLINOIS  
 DEPARTMENT OF TRANSPORTATION

EXISTING DRAWING 8  
 STRUCTURE NO. 016-6953 BRIDGE ST. OVER THE NORTH SHORE CHANNEL  
 SHEET NO. 547 OF 550 SHEETS

F.A.I. RTE.	SECTION	COUNTY	TOTAL SHEETS	SHEET NO.
	08-00251-00-BR	COOK	118	100
			CONTRACT NO. 63817	
[ILLINOIS] FED. AID PROJECT				

X:\100005\10055.02\Eng\_Docs\_Phase-11\Bridg-Stree-016-6953\Final\0166953\_047\_Exist8.dgn 2:55:21 PM 2/19/2013