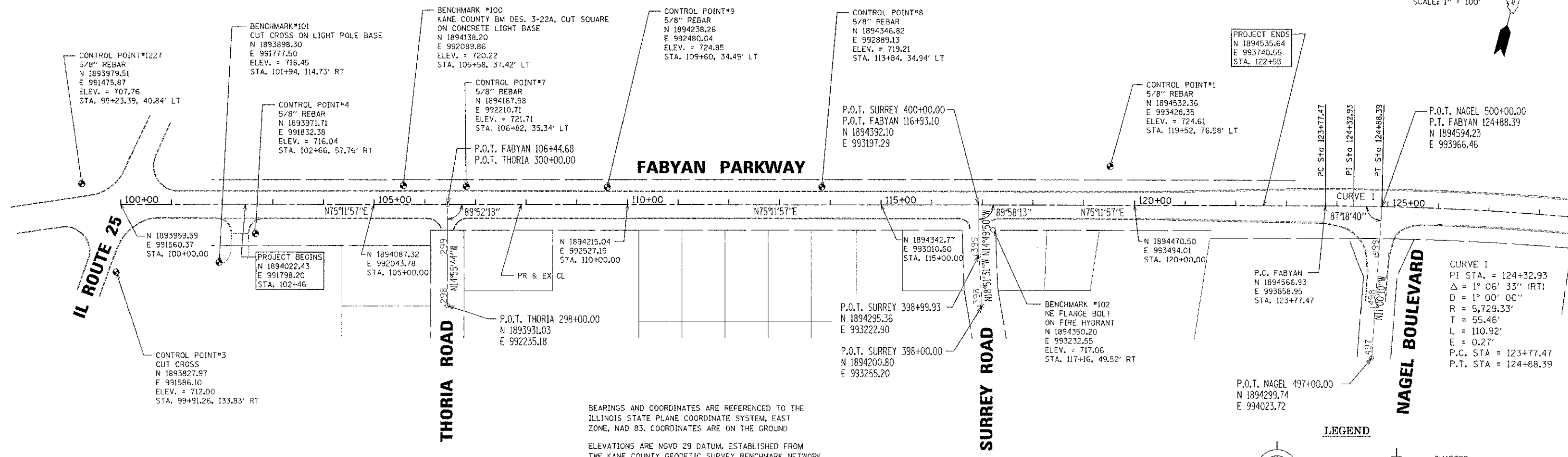


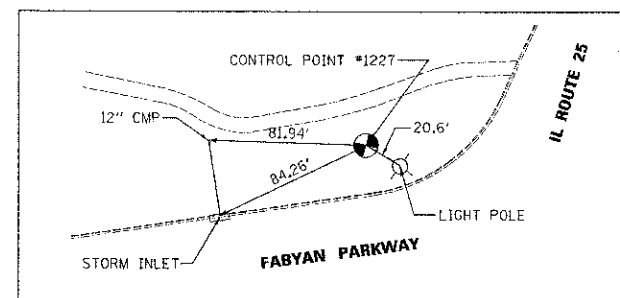
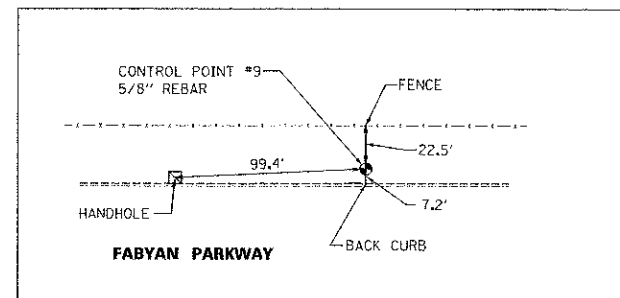
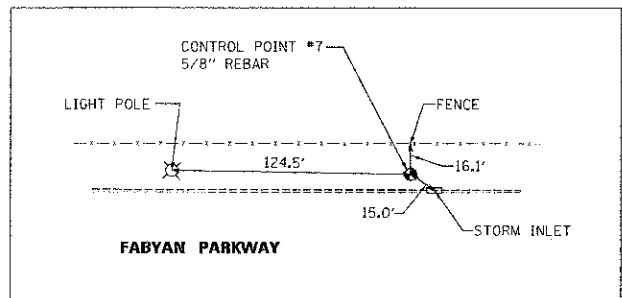
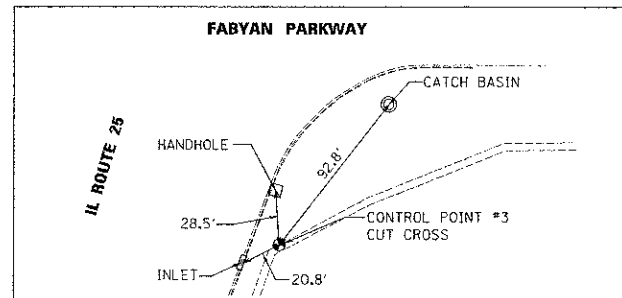
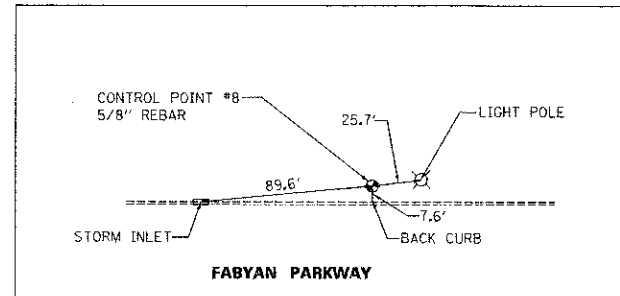
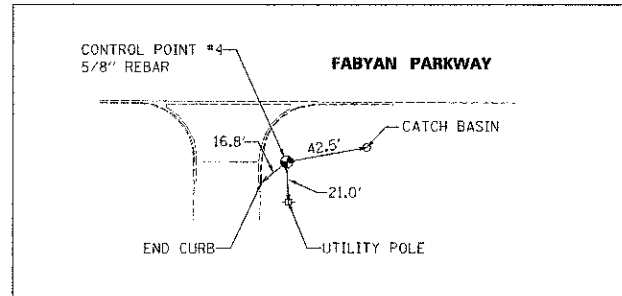
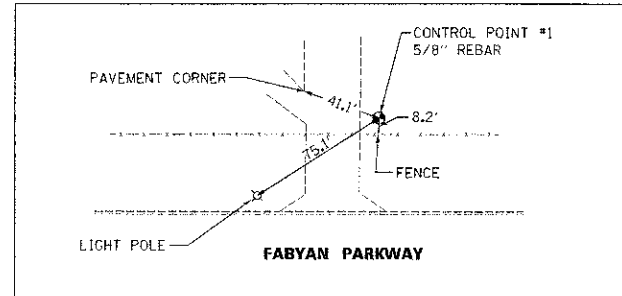
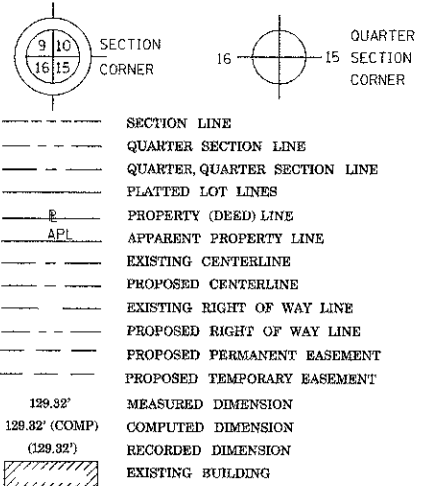
PART OF THE NW 14 SECTION 14 AND PART OF THE NE 14 SECTION 15, TWP. 39 N., R.8 E. OF THE 3RD. P.M., IN KANE COUNTY, ILLINOIS.

GRAPHIC SCALE  
FEET  
0 100  
SCALE: 1" = 100'



BEARINGS AND COORDINATES ARE REFERENCED TO THE ILLINOIS STATE PLANE COORDINATE SYSTEM, EAST ZONE, NAD 83. COORDINATES ARE ON THE GROUND  
ELEVATIONS ARE NGVD 29 DATUM, ESTABLISHED FROM THE KANE COUNTY GEODETIC SURVEY BENCHMARK NETWORK

LEGEND



Plot Date: 02/17/2013 File: 491-507.mxd

**Engineering Enterprises, Inc.**  
CONSULTING ENGINEERS  
52 Wheeler Road  
Sugar Grove, Illinois 60554  
630.466.6700 / www.eeinc.com

**KANE COUNTY DIVISION  
OF TRANSPORTATION**  
41W011 BURLINGTON ROAD  
ST. CHARLES, IL 60175

DESIGNED	TWR, SWM	REVISED	JPS 02/04/13
DRAWN	JPS, GSP	REVISED	-
CHECKED	JRL	REVISED	-
DATE	12/7/12	REVISED	-

**STATE OF ILLINOIS  
DEPARTMENT OF TRANSPORTATION**

**FABYAN PARKWAY  
ALIGNMENT, TIES AND BENCHMARKS**  
SCALE: 1" = 100' SHEET NO. 1 OF 1 SHEETS STA. 102+46 TO STA. 122+55

F.A.P. RTE.	SECTION	COUNTY	TOTAL SHEETS	SHEET NO.
363	10-00404-00-CH	KANE	59	11
C-91-496-10		CONTRACT NO. 63818		
ILLINOIS FED. AID PROJECT CMM-90031627				