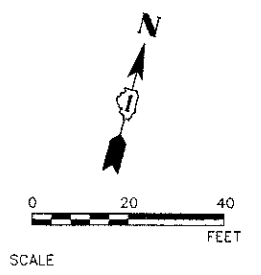
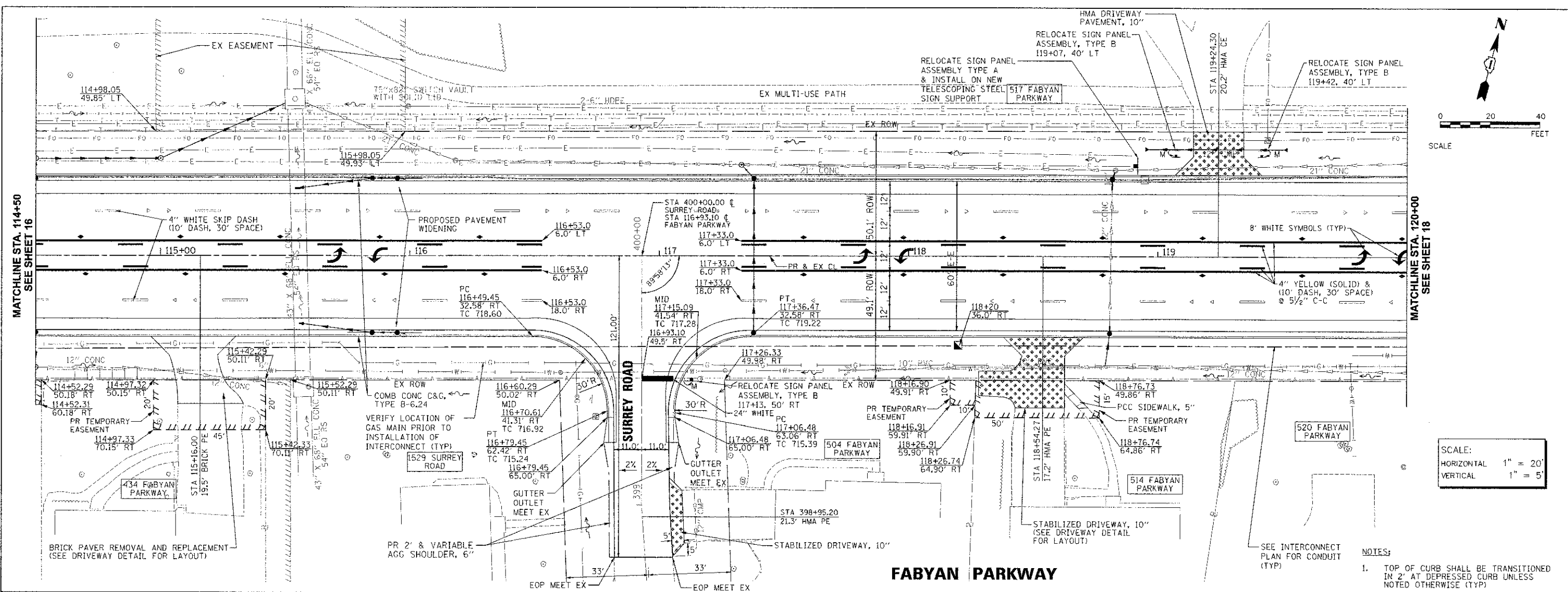


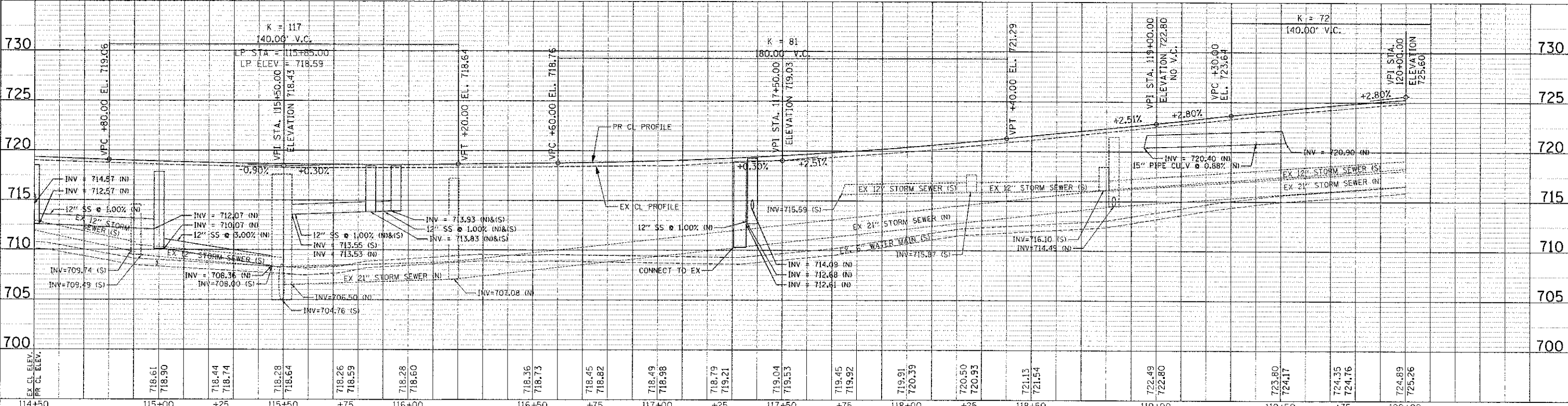
DATE	
REVISION	
NO.	
PLAN	
NO.	
DATE	
REVISION	
NO.	
PLAN	
NO.	

DATE	
REVISION	
NO.	
PROF.	
NO.	
DATE	
REVISION	
NO.	
PROF.	
NO.	



SCALE:
HORIZONTAL 1" = 20'
VERTICAL 1" = 5'

- NOTES:
- TOP OF CURB SHALL BE TRANSITIONED IN 2' AT DEPRESSED CURB UNLESS NOTED OTHERWISE (TYP)



Engineering Enterprises, Inc. CONSULTING ENGINEERS 52 Wheeler Road Super Grove, Illinois 60554 630.466.6700 / www.eeinc.com	KANE COUNTY DIVISION OF TRANSPORTATION 41W011 BURLINGTON ROAD ST. CHARLES, IL 60175	DESIGNED T.V.M. SWM	REVISED JPS 02/04/13	STATE OF ILLINOIS DEPARTMENT OF TRANSPORTATION	FABYAN PARKWAY PLAN & PROFILE	F.A.P. RTE. 363	SECTION 10-00404-00-CH	COUNTY KANE	TOTAL SHEETS 59	SHEET NO. 4 OF 5 SHEETS	STA. 114+50 TO STA. 120+00	CONTRACT NO. 63818	ILLINOIS FED. AID PROJECT CMM-900316271
		DRAWN JPS	REVISION			DATE 12/7/12	REVISION	REVISION					

10/14/2013 10:04:41 AM By: Schmitt

COPYRIGHT 2012 ENGINEERING ENTERPRISES, INC.