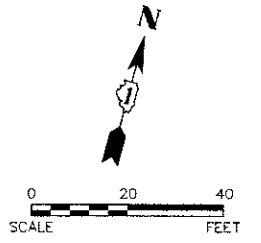
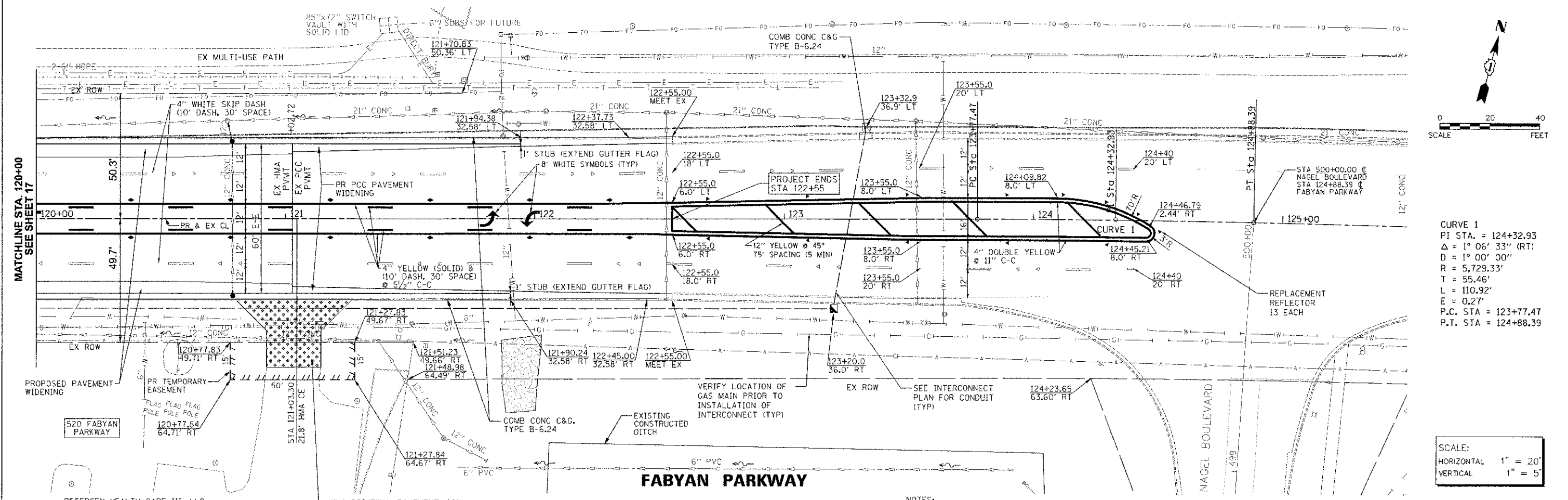


DATE	
BY	
PROJECT	
NO.	
DATE	
BY	
PROJECT	
NO.	
DATE	
BY	
PROJECT	
NO.	

DATE	
BY	
PROJECT	
NO.	
DATE	
BY	
PROJECT	
NO.	
DATE	
BY	
PROJECT	
NO.	

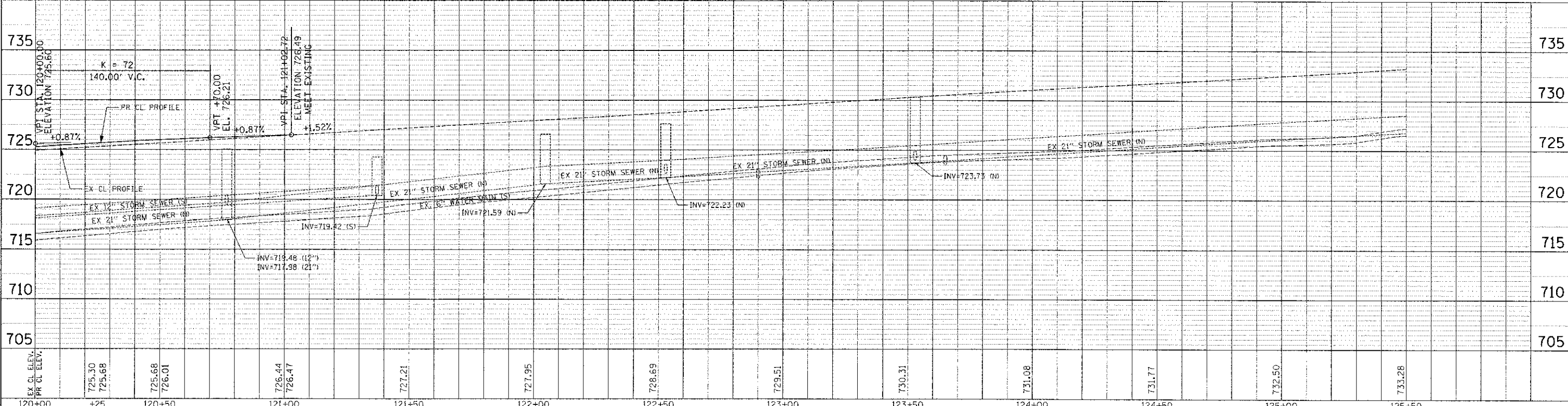


CURVE 1
 PI STA. = 124+32.93
 Δ = 1° 06' 33" (RT)
 D = 1° 00' 00"
 R = 5,729.33'
 T = 55.46'
 L = 110.92'
 E = 0.27'
 P.C. STA = 123+77.47
 P.T. STA = 124+88.39

SCALE:
 HORIZONTAL 1" = 20'
 VERTICAL 1" = 5'

- NOTES:**
- TOP OF CURB SHALL BE TRANSITIONED IN 2' AT DEPRESSED CURB UNLESS NOTED OTHERWISE (TYP)

REMOVAL OF EXISTING REFLECTIVE PAVEMENT MARKERS FROM STA 122+55 TO STA 124+55 SHALL CONSIST OF REMOVING ONLY THE REFLECTORS ACCORDING TO SECTION 783 OF THE STANDARD SPECIFICATIONS



Engineering Enterprises, Inc. CONSULTING ENGINEERS 52 Wheeler Road Sugar Grove, Illinois 60054 630.466.6700 / www.eeinc.com	KANE COUNTY DIVISION OF TRANSPORTATION 41W011 BURLINGTON ROAD ST. CHARLES, IL 60175	DESIGNED TYN, SWM	REVISED JPS 02/04/13	STATE OF ILLINOIS DEPARTMENT OF TRANSPORTATION	FABYAN PARKWAY PLAN AND PROFILE	F.A.P. RTE. 363	SECTION 10-00404-00-CH	COUNTY KANE	TOTAL SHEETS 59	SHEET NO. 18
		DRAWN JPS	REVISIONS			SCALE: 1"=20'	SHEET NO. 5 OF 5 SHEETS	STA. 120+00 TO STA. 125+00	CONTRACT NO. 63818	ILLINOIS FED. AID PROJECT CMM-900316271
DATE 12/7/12		CHECKED JRL		DATE 12/7/12		CONTRACT NO. 63818				

PLOT: 2/1/2013 9:21:47 AM By: schmidt