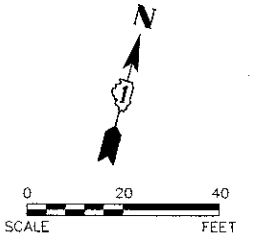
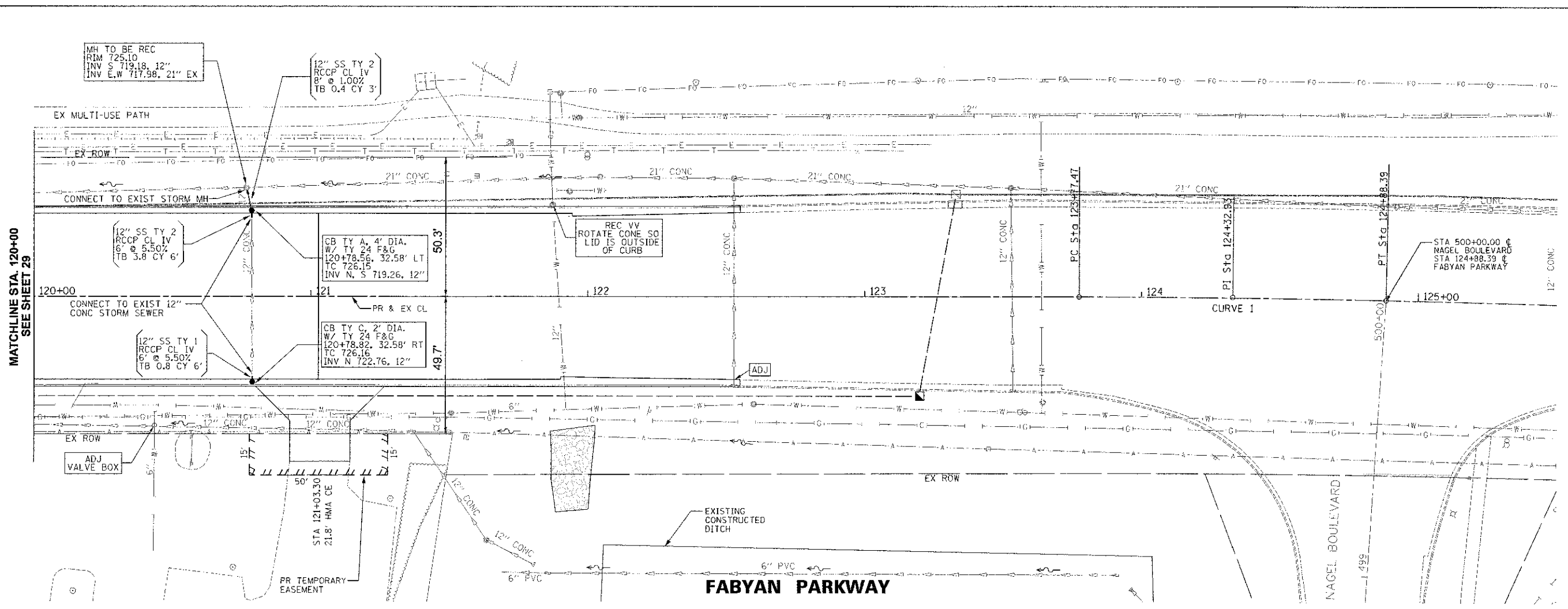


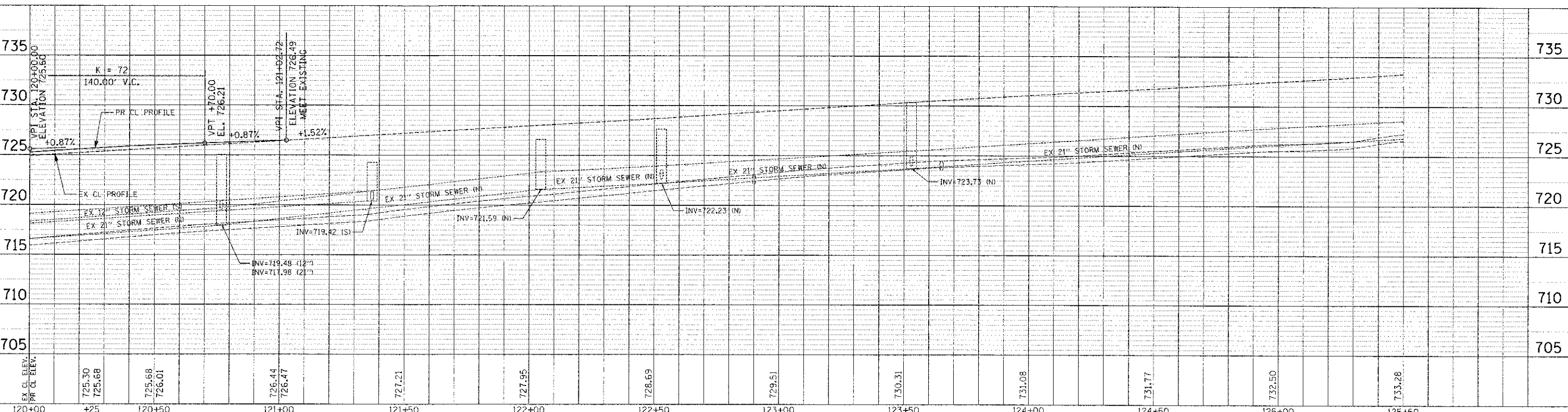
DATE	BY
REVISED	BY
DATE	BY
DATE	BY
DATE	BY
DATE	BY
DATE	BY
DATE	BY
DATE	BY
DATE	BY

PROJ. ILE	DATE
NO. BOOK	BY
NO.	BY
NO.	BY
NO.	BY
NO.	BY
NO.	BY
NO.	BY
NO.	BY
NO.	BY



CURVE 1
PI STA. = 124+32.93
Δ = 1° 06' 33" (RT)
D = 1° 00' 00"
R = 5,729.33'
T = 55.46'
L = 110.92'
E = 0.27'
P.C. STA = 123+77.47
P.T. STA = 124+88.39

SCALE:
HORIZONTAL 1" = 20'
VERTICAL 1" = 5'



EX CL. ELEV. PR CL. ELEV.	725.30 725.68	725.68 726.01	726.44 726.47	727.21	727.95	728.69	729.51	730.31	731.08	731.77	732.50	733.28													
120+00	+25	120+50	121+00	121+50	122+00	122+50	123+00	123+50	124+00	124+50	125+00	125+50													
Engineering Enterprises, Inc. CONSULTING ENGINEERS 52 Wheeler Road Sugar Grove, Illinois 60054 630.466.6700 / www.eetweb.com													KANE COUNTY DIVISION OF TRANSPORTATION 41W011 BURLINGTON ROAD ST. CHARLES, IL 60175		DESIGNED J.V.W. SWM DRAWN J.P.S. CHECKED J.R.L. DATE 12/7/12		REVISED J.P.S. 02/04/13 REVISED - REVISED - REVISED -		STATE OF ILLINOIS DEPARTMENT OF TRANSPORTATION		FABYAN PARKWAY DRAINAGE AND UTILITY PLAN AND PROFILE			F.A.P. RTE. 363 SECTION 10-00404-00-CH COUNTY KANE TOTAL SHEETS 59 SHEET NO. 30 C-91-496-10 CONTRACT NO. 6381B	
SCALE: 1"=20'													SHEET NO. 5 OF 5 SHEETS		STA. 120+00 TO STA. 125+00		ILLINOIS FED. AID PROJECT CMM-900316271								

Copyright © 2012 Engineering Enterprises, Inc.
11603400 AN BY: GSheindt