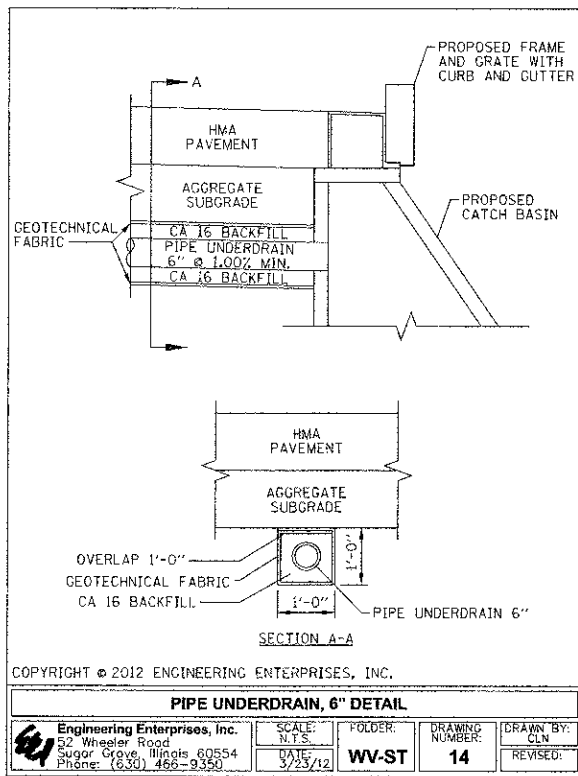
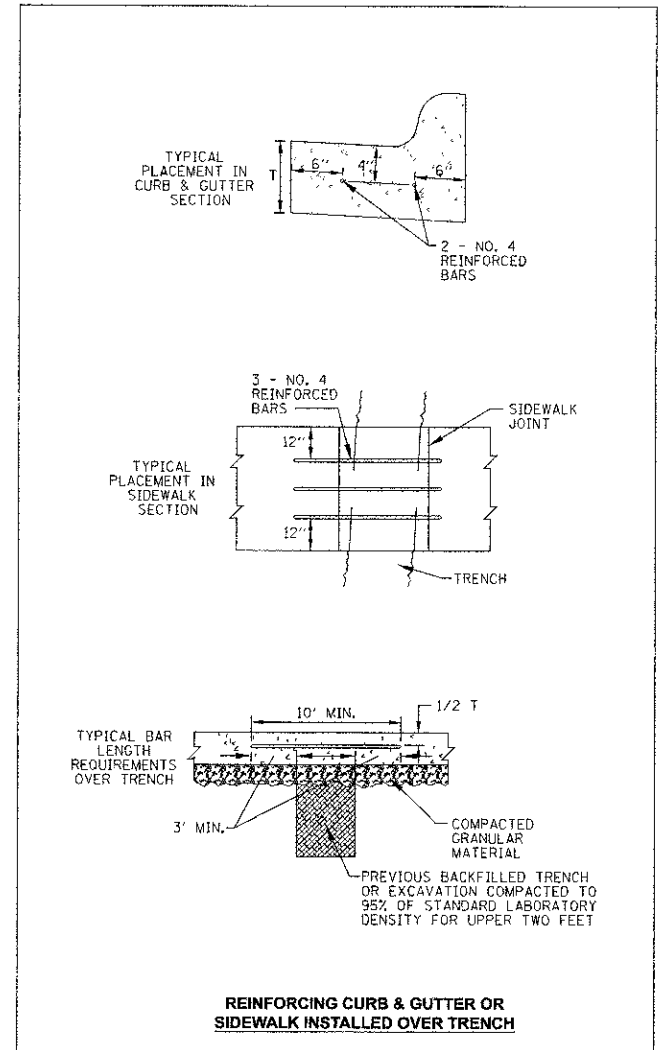
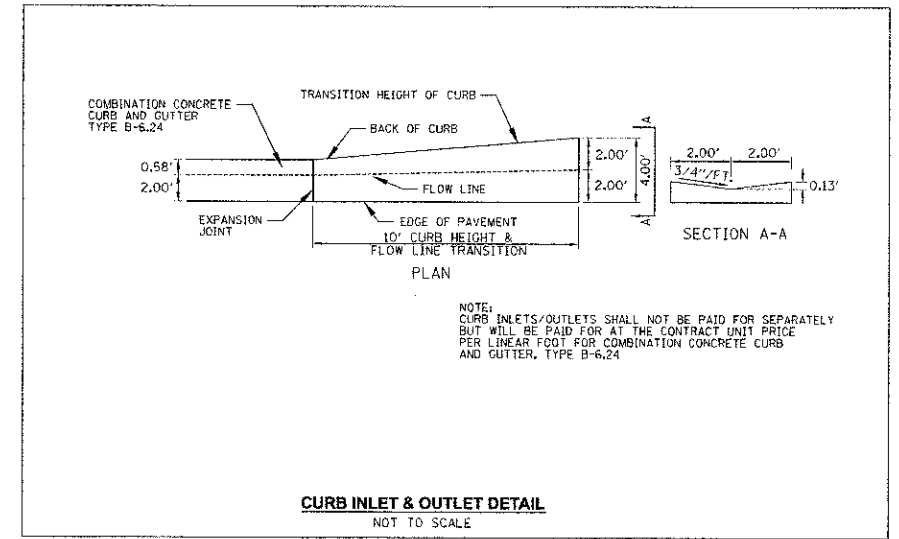


- NOTES:
1. ANY FLARE OR EXCAVATION BEYOND THE LIMITS SPECIFIED SHALL BE BACKFILLED ACCORDINGLY AT THE CONTRACTOR'S EXPENSE.
 2. PAVEMENT LIMITS SHALL BE DEFINED AS 2' BEYOND CURB AND GUTTERS, PAVING, BIKE PATHS, SIDEWALKS, AGGREGATE SHOULDERS AND ANY OTHER PAVED AREAS.
 3. TRENCH BACKFILL PAY LIMITS SHALL BE IN ACCORDANCE WITH THE IDOT TRENCH BACKFILL TABLE.
 4. PIPE SHALL BE BACKFILLED IN ACCORDANCE WITH ARTICLE 550.07, METHOD 1 ONLY, OR AS DIRECTED BY THE ENGINEER, EXCEPT AS NOTED IN THIS DETAIL.
 5. FINAL TRENCH BACKFILL SHALL BE PLACED IN 6" LIFTS AND SHALL BE COMPACTED IN PLACE TO 95% OF MAXIMUM DENSITY AT OPTIMUM MOISTURE AS DETERMINED BY THE MODIFIED PROCTOR TEST.

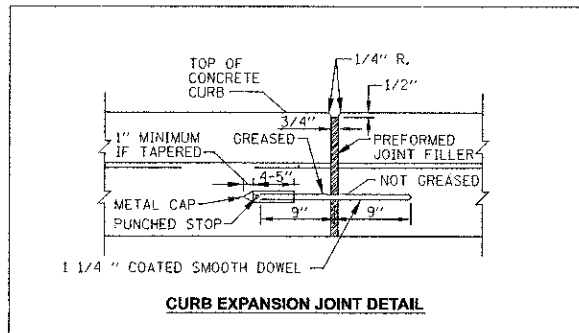
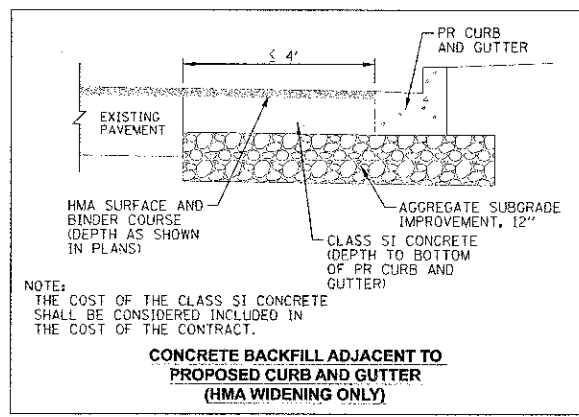
COPYRIGHT © 2012 ENGINEERING ENTERPRISES, INC.

TRENCH SECTION FOR STORM SEWER FOR PAVED AREAS AND GREEN AREAS					
EEI	Engineering Enterprises, Inc. 52 Wheeler Road Sugar Grove, Illinois 60554 Phone: (830) 466-9350	SCALE: N.T.S.	FOLDER:	DRAWING NUMBER:	DRAWN BY:
		DATE: 7/18/12			REVISED:



COPYRIGHT © 2012 ENGINEERING ENTERPRISES, INC.

PIPE UNDERDRAIN, 6" DETAIL					
EEI	Engineering Enterprises, Inc. 52 Wheeler Road Sugar Grove, Illinois 60554 Phone: (830) 466-9350	SCALE: N.T.S.	FOLDER: WV-ST	DRAWING NUMBER: 14	DRAWN BY: CLM
		DATE: 3/23/12			REVISED:



Per: 2/1/2013 3:53:05 PM by: jlschnd+

Engineering Enterprises, Inc.
CONSULTING ENGINEERS
52 Wheeler Road
Sugar Grove, Illinois 60554
630.466.6700 / www.eeiweb.com

**KANE COUNTY DIVISION
OF TRANSPORTATION**
41W011 BURLINGTON ROAD
ST. CHARLES, IL 60175

DESIGNED: J.V. SWM
DRAWN: JPS
CHECKED: JRL
DATE: 12/1/12

REVISED: JPS 02/04/13
REVISED: _____
REVISED: _____
REVISED: _____

**STATE OF ILLINOIS
DEPARTMENT OF TRANSPORTATION**

**FABYAN PARKWAY
SPECIAL DETAILS**

SCALE: N.T.S. SHEET NO. 3 OF 3 SHEETS STA. TO STA.

F.A.P. RTE. 363	SECTION 10-00404-00-CH C-91-496-10	COUNTY KANE	TOTAL SHEETS 59	SHEET NO. 51
CONTRACT NO. 63818			ILLINOIS FED. AID PROJECT CMM-9003627	